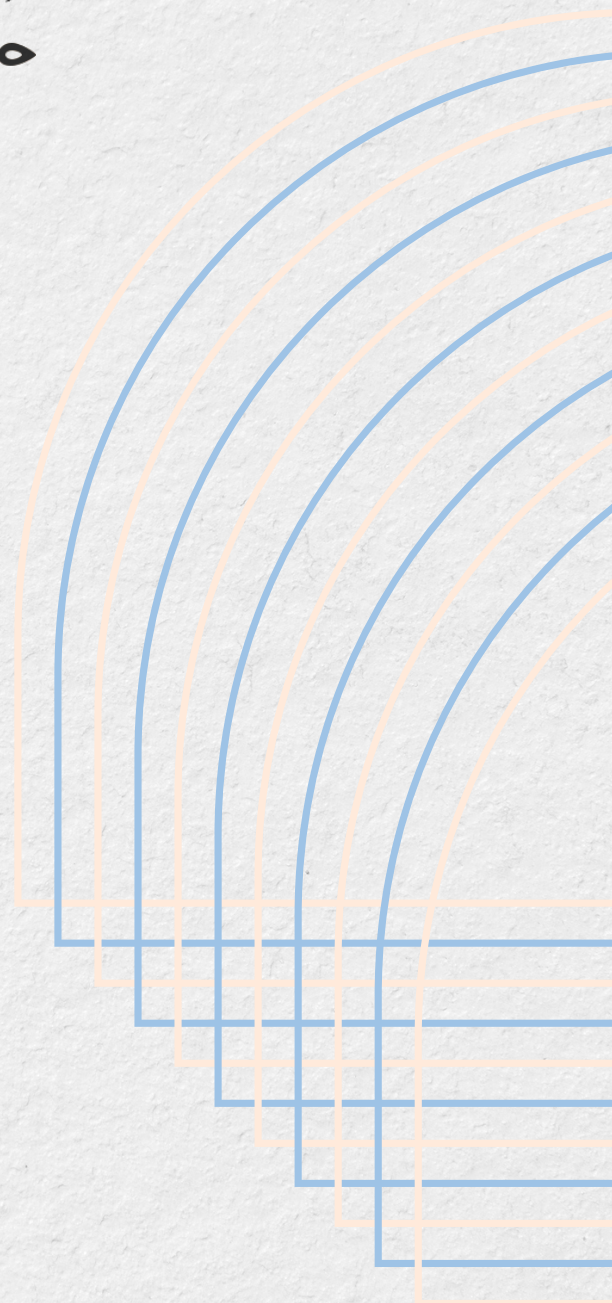


# HOME CREATOR



## Measuring Guide - Single Roller Blinds



# General Information

Please use a metal measuring tape to take measurements with **millimeters**.

If Recess fitting (Inside fitting )please write down actual sizes you measured then **deduct 5mm** on width as finished width.

If Face fitting ( Outside fitting) don't need to take any deduction.

When deciding whether to fit the blinds Recess fitting or Face fitting considering the following points

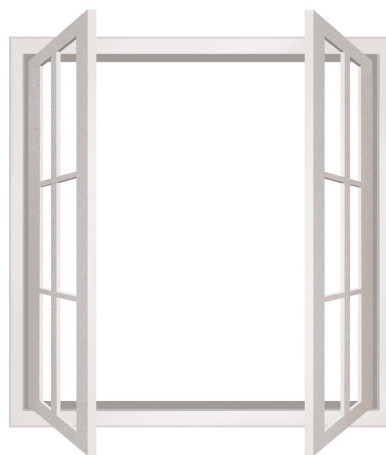
It will be necessary to fit the blinds **on window architrave** (Face fitting) if:

- The window recess depth is less than 50 mm.



- The window opens inwards.

## General Information

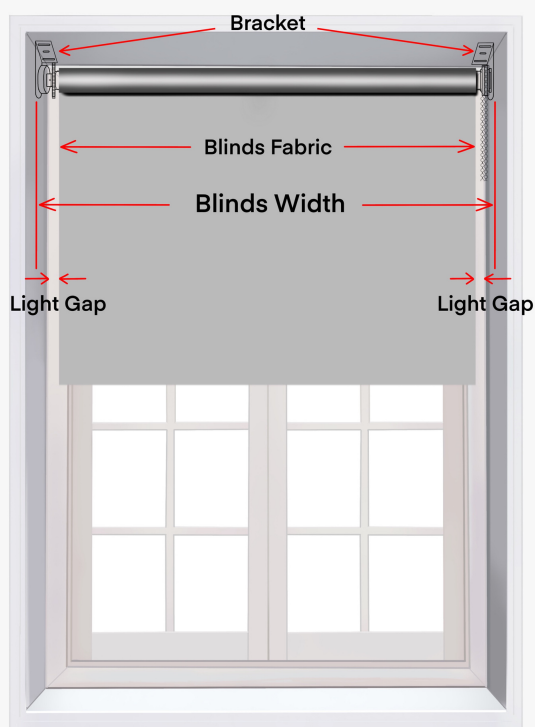


Face fitting only

- The window is not straight (width or height varies by more than 20mm).

### Important Note:

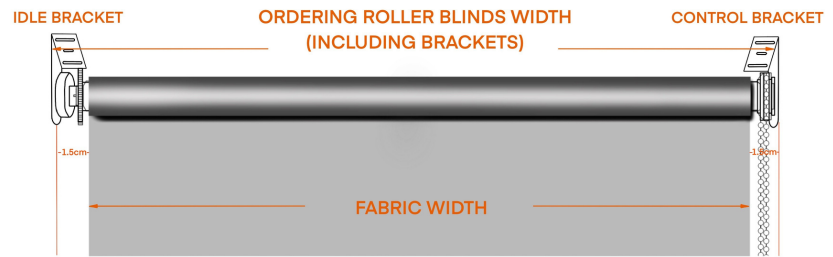
- All our Roller Blinds will be manufactured in width as pin measure (outside of bracket to outside of bracket) as illustrated below.



**Better to fit Blockout Blinds on window architrave to block side light to make room dark and privacy.**

# General Information

## PRODUCT STRUCTURE



Blinds width includes brackets.  
Fabric width is narrower than tube width around 30mm.  
Suggest to fit blackout roller blinds on window architrave ( face fitting) to avoid gap between blinds and window frames.

- Width of finished blinds fabric will be narrowed around 30mm than blinds width.
- There will be a vertical light gap between the edge of blinds fabric and window casing on either side.
- Better to fit Blockout blinds on the window architrave to block the edge light to make room darker and privacy especially in bedroom.
- When deciding Recess Fitting please check the window handle or winder around the window recess space.

**Recess Fitting:** Blinds fitted inside the window architrave.



Recess Fitting: Blinds Width = Opening Width - 5mm

## The Benefits of Recess Fitting and Face Fitting

## The Benefits of Recess Fitting and Face Fitting

- Suitable for outward opening window
- Suitable for window recess over 50mm
- Space-saving and window clear
- Highlight window architrave

**Face Fitting:** Blinds fitted on the window architrave or on the wall surrounding the window.



- Suitable for inward opening window
- Suitable for window recess less than 50mm
- Suitable for unsquared window
- Better light blackout
- Better privacy
- Best for bedroom

### **Recess Fitting Measuring Guide**

The minimum window depth required :

Single blinds: 50mm

Double blinds: 100mm

## Recess Fitting Measurement (Inside Fitting)

# Recess Fitting Measurement (Inside Fitting)



## Step 1

- Take one measurement for the width of the window recess from left to right at top as shown in the picture.
- Use the width - 5 mm as finished width.

## Recess Fitting Measurement (Inside Fitting)

### Step 2

- Take 3 measurements for the drop of the window recess from bottom to top at left, middle and right as shown in the picture.
- Choose the smallest of these measurements as the recess drop.
- Use the recess drop as finished drop.

### Note:

Before completing the order, make sure there are no handle or window winder to interfere with fitting the blinds.

## Face Fitting Measurement (Outside Fitting)

### Face Fitting Measuring Guide



### Step 1

- Take one measurement for the width of the window architrave at top as shown in the picture.
- Use the width as finished width.

### Step 2

- Take 3 measurements for the drop of the window architrave from bottom to top at left, middle and right as shown in the picture.

## Face Fitting Measurement (Outside Fitting)

- Choose the biggest of these measurements as the outside drop.
- Use the drop as finished drop.