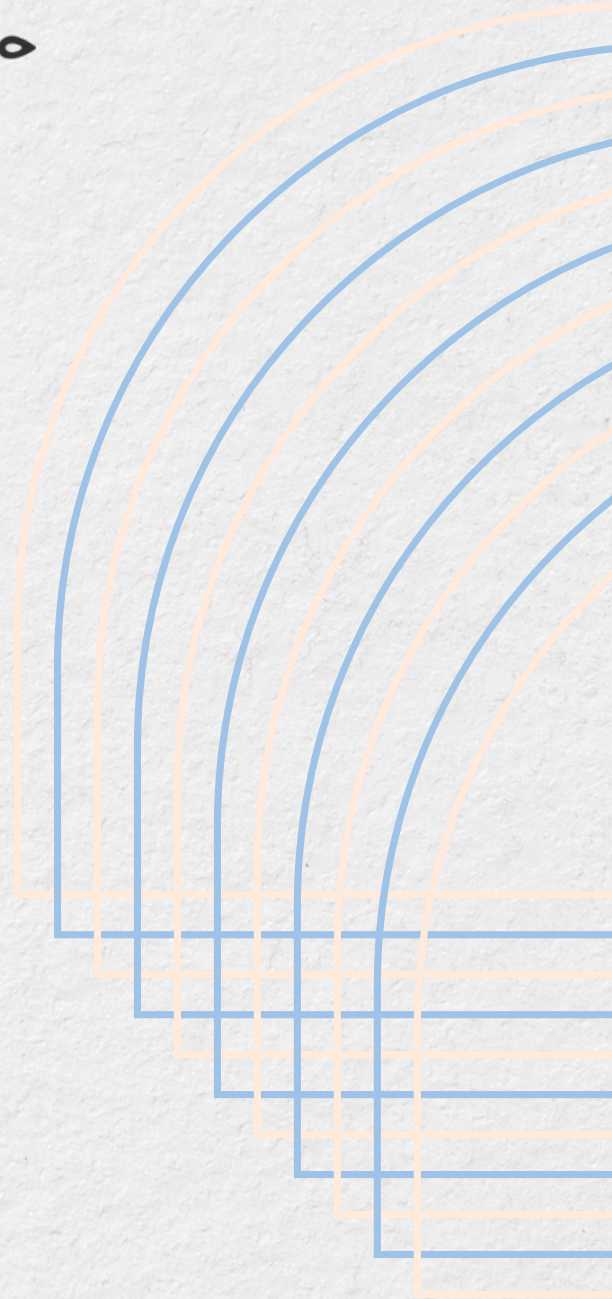


HOME CREATOR



Measuring Guide - Double Roller Blinds



General Information

Double roller blinds means two same sizes single roller blinds are combined with one dual bracket to control the sunlight and privacy in the room.

You just measure one size blinds is fine to order double roller blinds.

Please use a metal measuring tape to take measurements with millimetres.

If Recess fitting (Inside fitting)please write down actual sizes you measured then deduct 5mm on width as finished width.

If Face fitting (Outside fitting) don't need to take any deduction.

When deciding whether to fit the blinds Recess fitting or Face fitting considering the following points

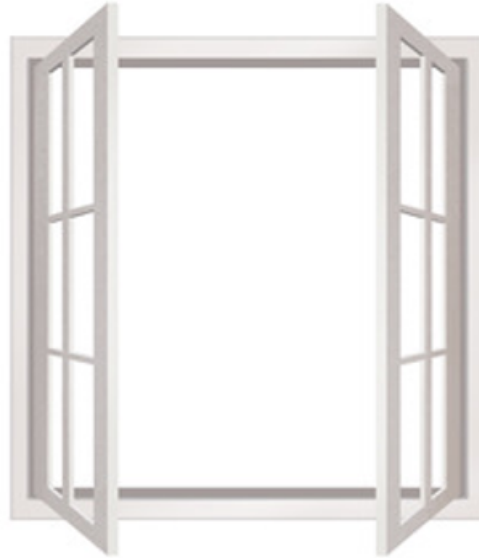
It will be necessary to fit the blinds on window architrave (Face fitting) if:

- The window recess depth is less than 100 mm.



General Information

- The window opens inwards



Face fitting only

- The window is not straight (width or height varies by more than 20mm).

Important Note:

- All our Roller Blinds will be manufactured in width as pin measure (outside of bracket to outside of bracket) as illustrated below.

PRODUCT STRUCTURE

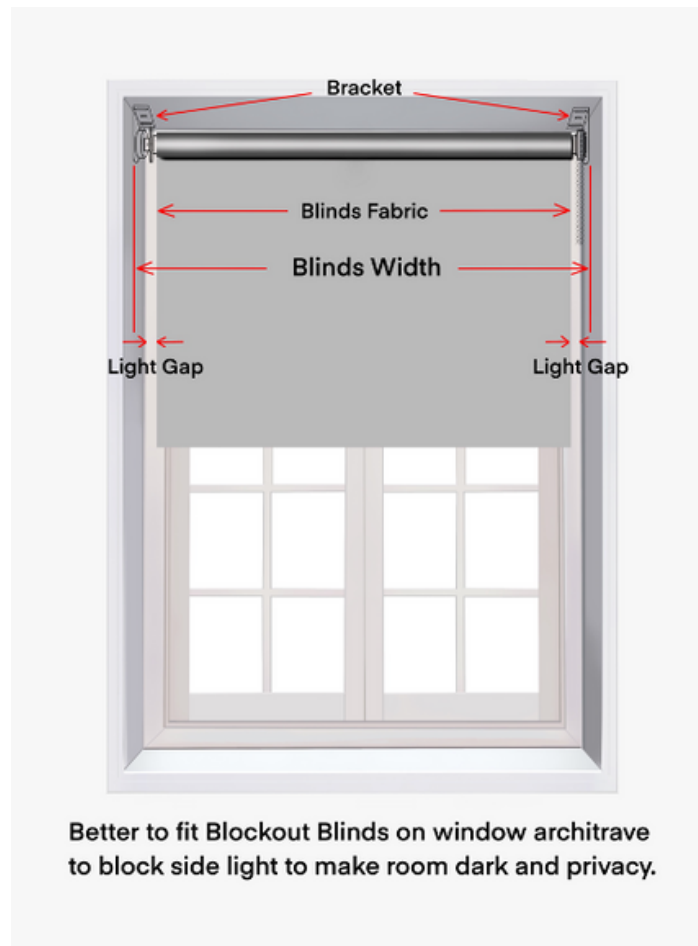


Blinds width includes brackets.

Fabric width is narrower than tube width around 30mm.

Suggest to fit blackout roller blinds on window architrave (face fitting) to avoid gap between blinds and window frames.

General Information



- Width of finished blinds fabric will be narrowed around 30mm than blinds width.
- There will be a vertical light gap between the edge of blinds fabric and window casing on either side.
- Better to fit Blockout blinds on the window architrave to block the edge light to make room darker and privacy especially in bedroom.
- When deciding Recess Fitting please check the window handle or winder around the window recess space.

The Benefits of Recess Fitting and Face Fitting

Recess Fitting: Blinds fitted inside the window architrave.

The Benefits of Recess Fitting and Face Fitting



- Suitable for outward opening window
- Suitable for window recess over 100mm
- Space saving and window clear
- Highlight window architrave

Face Fitting: Blinds fitted on the window architrave or on the wall surrounding the window.



Recess Fitting Measurement (Inside Fitting)

- Suitable for inward opening window
- Suitable for window recess less 100mm
- Suitable for unsquared window
- Better light blockout
- Better privacy
- Best for bedroom

The minimum window depth required :

Single blinds: 50mm

Double blinds: 100mm



Recess Fitting Measurement (Inside Fitting)

Step 1

- Take one measurement for the width of the window recess from left to right at top as shown in the picture.
- Use the width – 5 mm as finished width.

Step 2

- Take 3 measurements for the drop of the window recess from bottom to top at left, middle and right as shown in the picture.
- Choose the smallest of these measurements as the recess drop.
- Use the recess drop as finished drop.

Note:

Before completing the order, make sure there are no handle or window winder to interfere with fitting the blinds.

Face Fitting Measurement (Outside Fitting)



Step 1

- Take one measurement for the width of the window architrave at top as shown in the picture.
- Use the width as finished width.

Face Fitting Measurement (Outside Fitting)

Step 2

- Take 3 measurements for the drop of the window architrave from bottom to top at left, middle and right as shown in the picture.
- Choose the biggest of these measurements as the outside drop.
- Use the drop as finished drop.