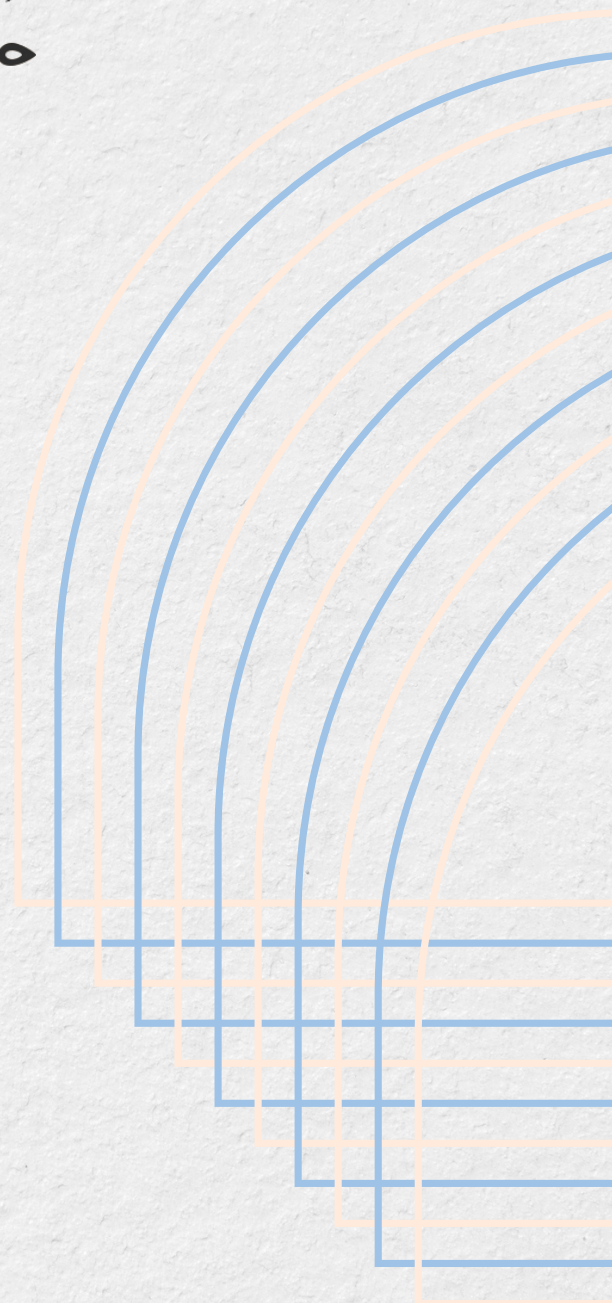


HOME CREATOR



Measuring Guide - Bamboo & Jute Roman Blinds



General Information

- Please use a metal measuring tape to take measurements with millimetres.
- If Recess fitting please write down actual sizes you measured then deduct 5mm on width as finished width.
- If Face fitting doesn't need to take any deduction.

Important Note - Stretching

The natural elasticity of yarns combined with the weight of the natural woven material may cause shades to stretch upwards to 20-40mm after installation. This is particularly noticeable on inside mount shades or shades fitted from ceiling to floor.

This is considered a natural characteristic of the product and is not covered under warranty. Ordering the shade shorter than needed will help compensate for stretching over time, however, the shade will be short when installed.

Window Style

When deciding whether to fit Bamboo & Jute Roman blinds Recess fitting or Face fitting please consider the following points.

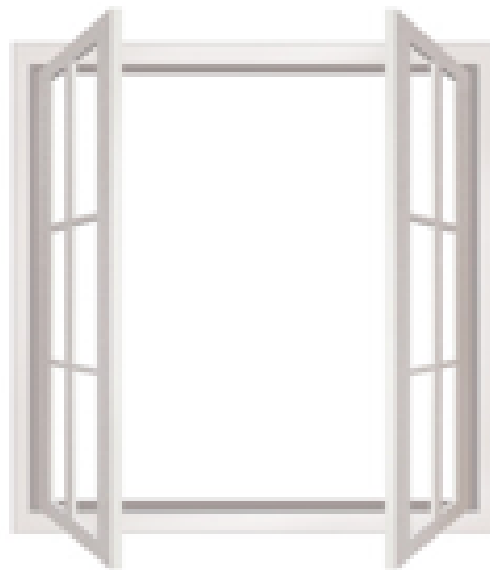
It will be necessary to fit the blinds on the window architrave (Face fitting) if:

A. The window recess depth is less than 40 mm.

General Information



B. The window opens inwards



Face fitting only

C. The window is not straight (width or height varies by more than 20mm).

The benefit of recess fitting and face fitting

Recess Fitting: Blinds fitted at the window reveal.



- Suitable for outward opening window
- Suitable for window recess over 40mm
- Space-saving and window clear
- Highlight window architrave

Face Fitting: Blinds fitted on the window architrave or on the wall surrounding the window.

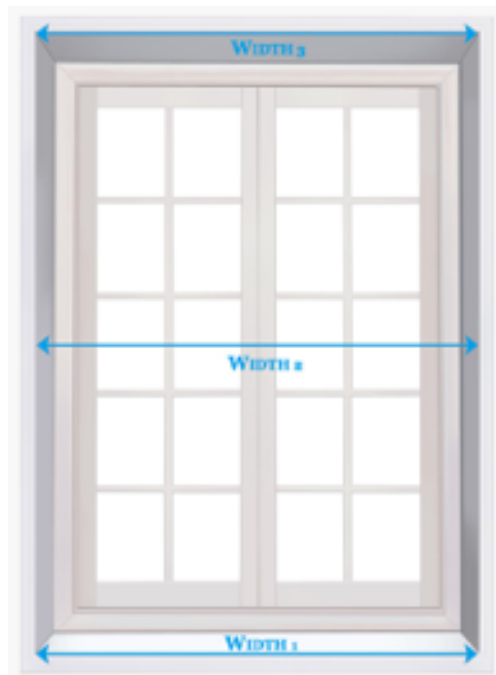


General Information

- Suitable for inward opening window
- Suitable for window recess less than 40mm
- Suitable for unsquared window

Recess Fitting Measurement

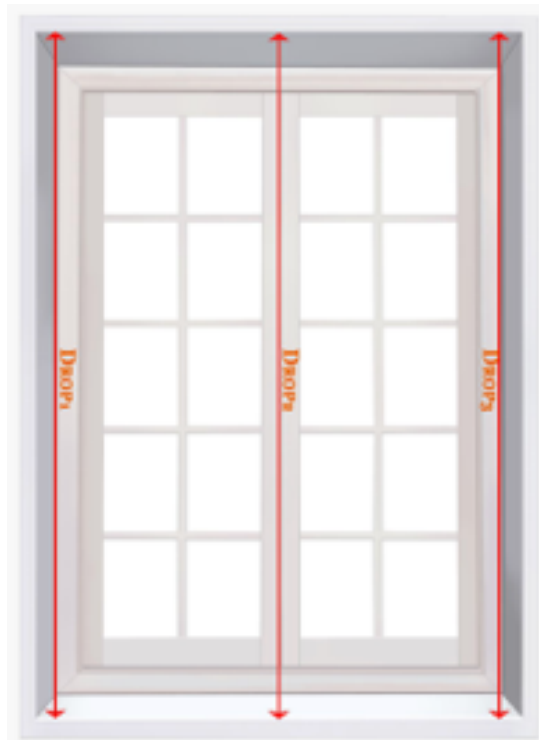
The minimum window depth required: 40mm



Recess Fitting Measurement

Step 1

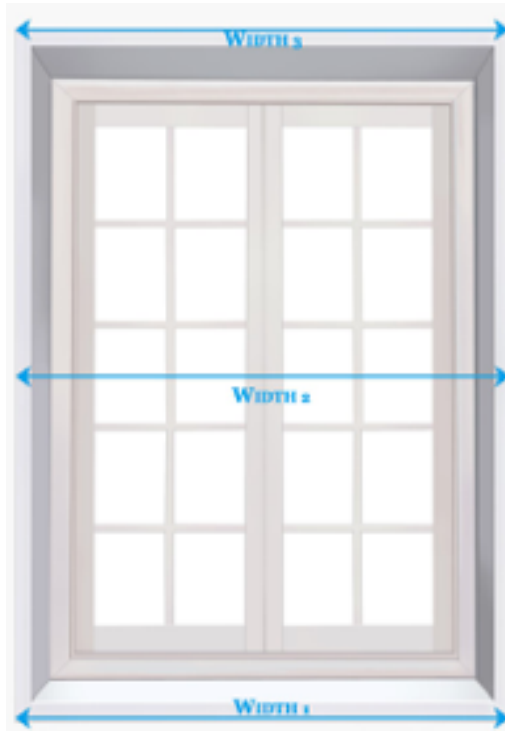
- Take 3 measurements for the width of the window recess from left to right at the top, middle and bottom as shown in the picture.
- Choose the smallest of these measurements as the recess width.
- Use the recess width – 5 mm as the finished width.



Step 2

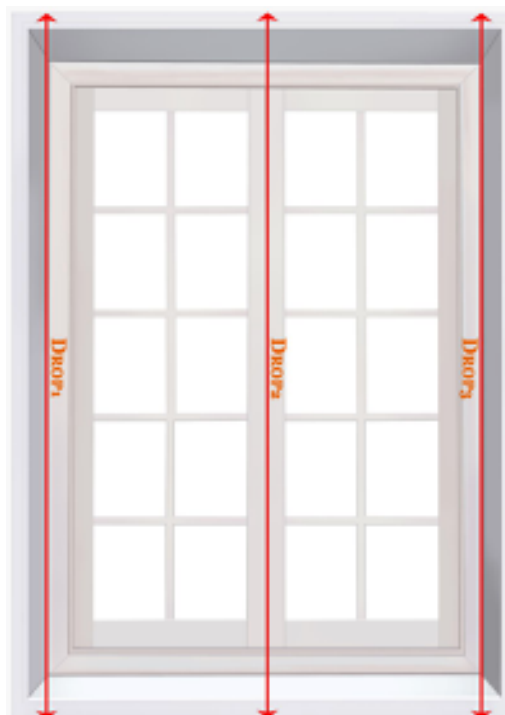
- Take 3 measurements for the drop of the window recess from bottom to top at left, middle and right as shown in the picture.
- Choose the smallest of these measurements as the recess drop.
- Use the recess drop – (20- 40mm) as the finished drop.

Face Fitting Measurement



Step 1

- Take 3 measurements for the width of the window architrave from left to right at the top, middle and bottom as shown in the picture.
- Choose the smallest of these measurements as the finished width.



Face Fitting Measurement

Step 2

- Take 3 measurements for the drop of the window architrave from bottom to top at left, middle and right as shown in the picture.
- Choose the smallest of these measurements as the finished drop.
- Please deduct - (20-40mm) if blinds fitted to the floor.