



Denny T AFC Delete Installation Instructions

Tools Needed:

10mm Wrench, 13mm Wrench, 12mm Wrench, 14mm Wrench, 17mm Wrench

5mm Ball End Allen Wrench, 8mm Allen Wrench

Needle Nose Pliers, Hammer, Small Punch,

Pick (for o-ring removal/installation), Flat Head Screwdriver

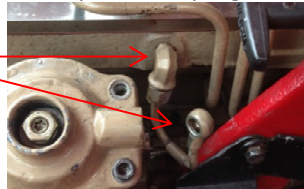
Small Piece of Clean Plywood (to cover Turbo Inlet), Vice Grips

Phase 1: Disassembly

Step 1: Disconnect Linkage Ball Socket and Spring using needle nose pliers

Step 2: Remove AFC Boost Line (12mm Wrench), install provided plug into open port on cylinder head.

Step 2:



Step 3: NON IC APPLICATIONS: Remove front fuel line (14mm)

Step 3:

IC APPLICATIONS: Removal of this line may not be required

****NOTE:** Fuel will leak from this line when disconnected.

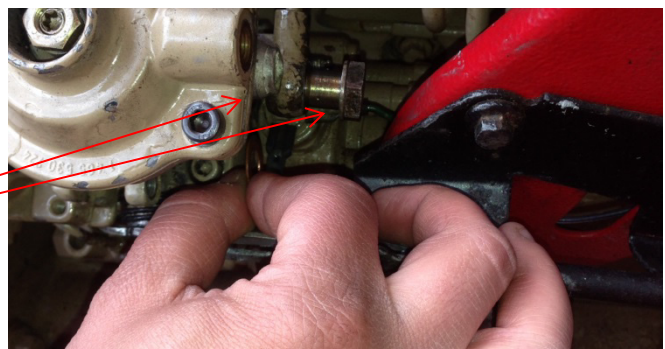
Please take proper precautions.

Step 4: Remove rear fuel line banjo bolt. Be sure to catch copper washer between pump and front of the rear fuel line.

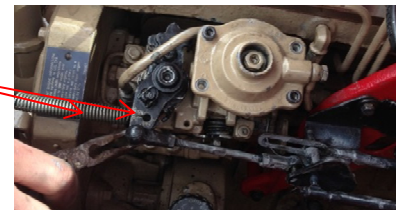
****NOTE:** Fuel will leak from this line when disconnected.

Please take proper precautions.

Step 4:

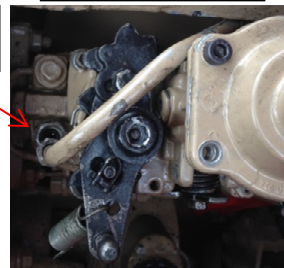


Step 1:



NON IC (89-91)

IC (91.5-93)



Step 5: Crack lock nut on Power Screw. Remove while noting the number of turns. This is essential for easy restart after AFC Delete Installation. This is a VERY IMPORTANT step.

****NOTE:** If truck is in stock condition, the tamper cap on the power screw must be removed using vice grips.

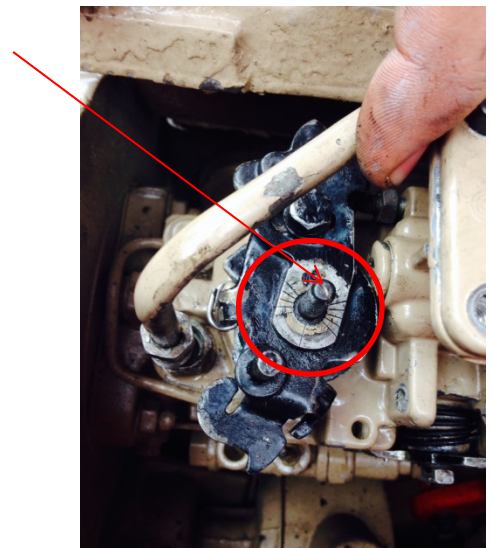
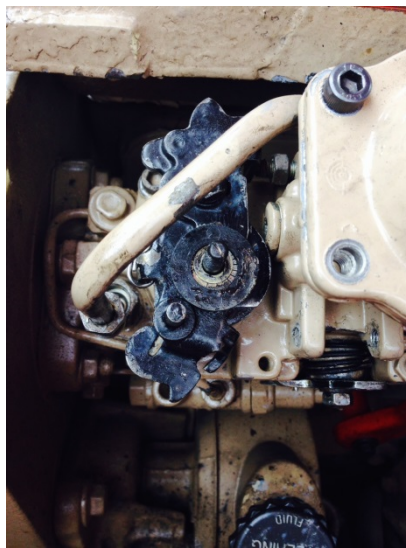
****NOTE:** It is essential to remove the power screw prior to removal of the AFC top to prevent damage to the fulcrum lever inside the injection pump.

Step 6: Remove 8mm Allen head bushing and top 1/2 of throttle linkage.

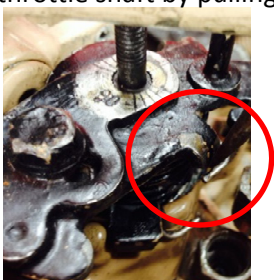
Step 7: Remove plastic washer and metal lock washer.

****NOTE:** Please note orientation of slot in throttle shaft and position in relation to hash-marks on lower throttle linkage assembly.

Step 6 & Step 7



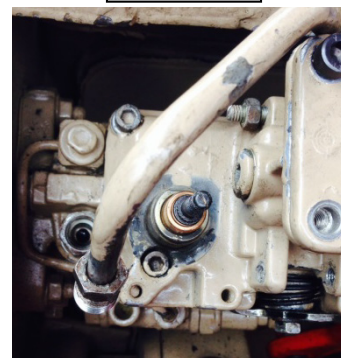
Step 8: Remove spring tension from lower throttle linkage by using flat head screw driver. Remove metal bracket from throttle shaft by pulling off of the splines on base of throttle shaft.



← Step 8 →



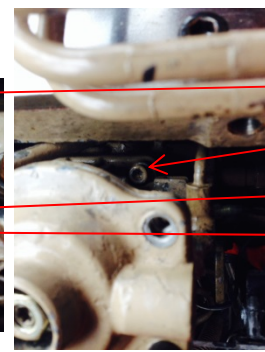
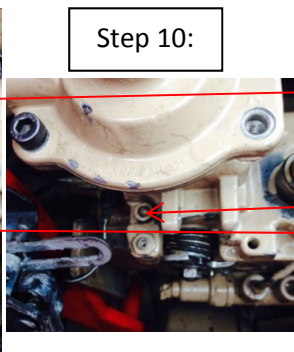
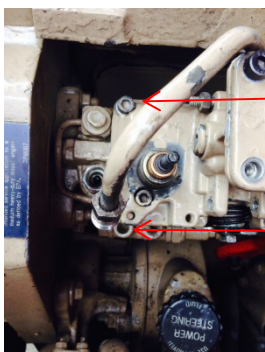
Step 9:



Step 9: Remove Spring and both plastic spacers from AFC housing.

Step 10: Remove 4 AFC Housing bolts using 5mm Ball End Allen

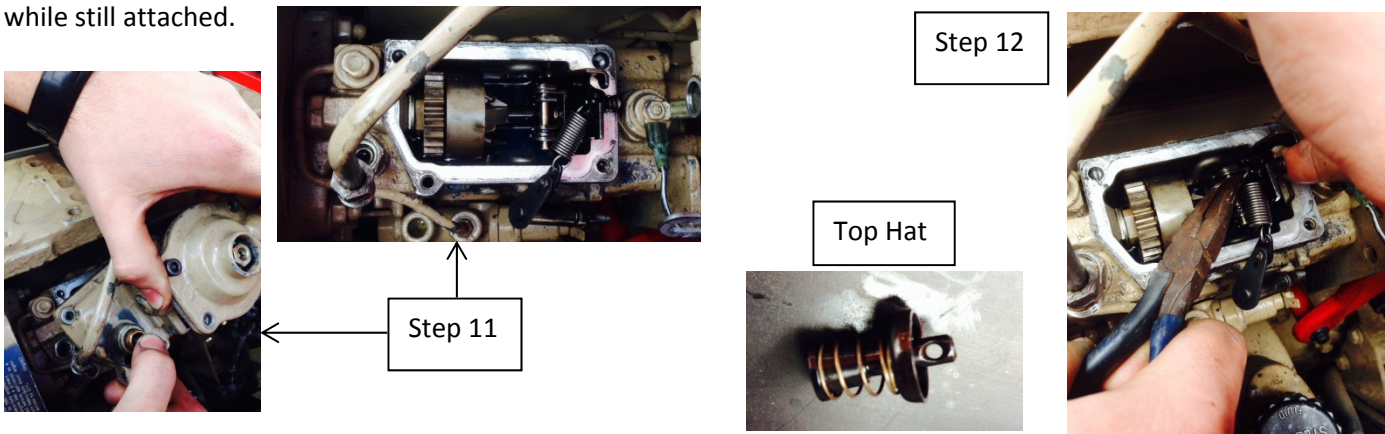
Step 10:



- 1
- 2
- 3
- 4

Step 11: Remove AFC pump top while simultaneously pushing throttle shaft down to send throttle shaft through the bushing.

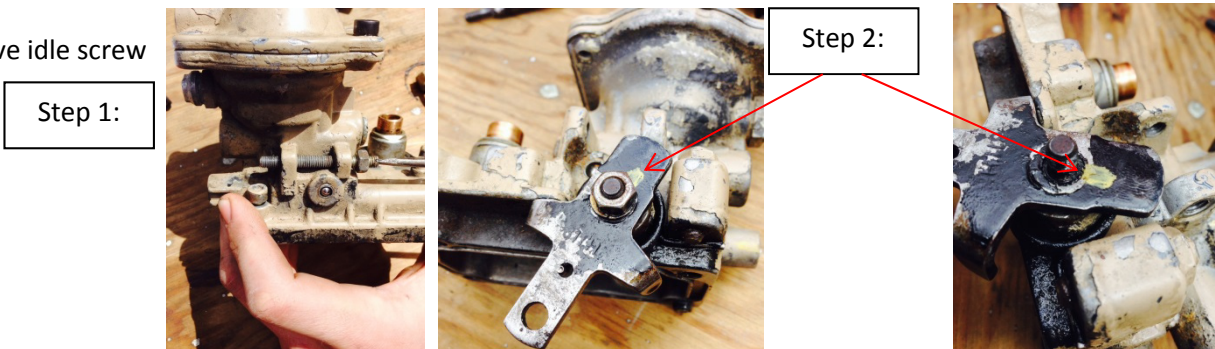
Throttle shaft will be connected to gov spring and top hat assy attached to pump lever. Let throttle shaft hang while still attached.



Step 12: Remove gov spring from top hat by depressing rear of top hat and pulling spring through w/ needle nose pliers. Use caution when removing top hat as it is spring loaded.

Phase 2: Preparation of AFC Delete

Step 1: Remove idle screw



Step 2: Remove manual shut off lever using 10mm wrench or socket. Prior to removing bracket be sure to mark orientation of lever on splines.

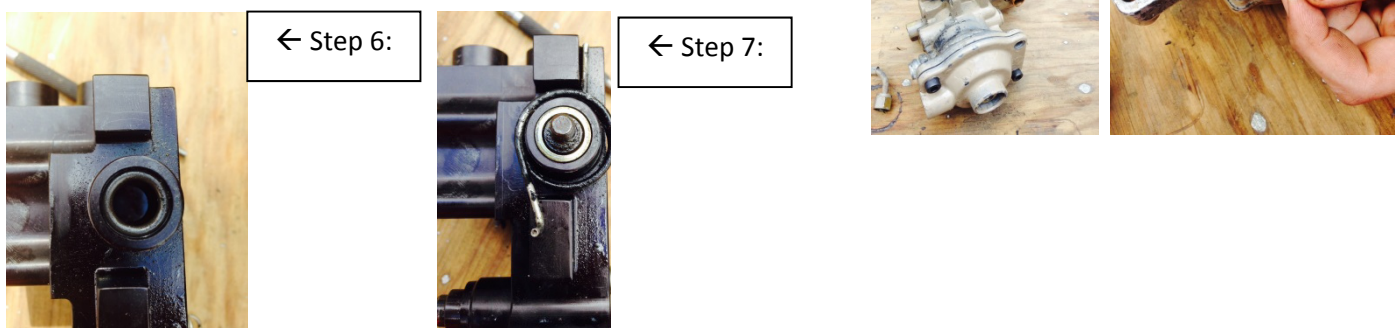
Step 3: Remove lever, spring, and o-ring retainer.

Step 4: Take small punch and remove ball bearing retainers in order to remove the lever blocking removal of the manual shut off lever inside the AFC head. There is one on each side of the AFC head. Once ball bearings are removed, use a small punch to drive out lever retaining shaft.

Step 5: Remove shaft and lever. Remove manual shutoff lever.

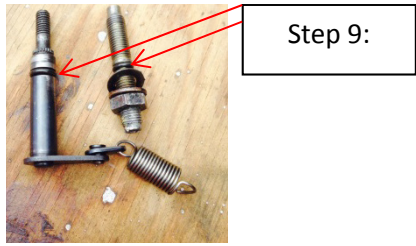
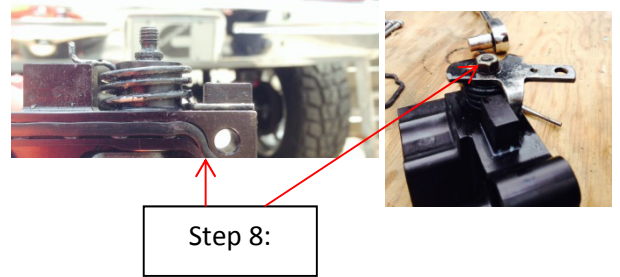
Step 6: Install o-ring for manual shutoff lever

Step 7: Install retainer ring, shaft, and spring for manual shutoff lever.



Step 8: Install manual shutoff lever and secure using lock washer and nut.

Step 9: Remove and replace o-ring's on throttle shaft and power screw.



Step 10: Insert allen bolt into top right location of AFC Delete. Then install idle screw so that slot is facing front of pump head and approx. 1/4" is exposed.

Step 11: Install new gasket to bottom of AFC Delete head.



Phase 3: Reinstall

Step 1: Install top hat with gov spring and throttle shaft. Be sure to install top hat THROUGH hole in pump lever.

Step 2: Install pump head while inserting throttle shaft up through throttle shaft bushing.

Step 3: Insert remaining 3 allen bolts into AFC Delete head. Get all threads started, then proceed to tighten all 4 bolts down.

Step 4: Reinstall power screw. Thread power screw in a few turns at a time until truck will start. Be Sure not to advance power screw too far initially as a Runaway condition could result. Rotate screw in 1 full turn increments.

Step 5: Reinstall rear fuel line and banjo bolt (17mm)

Step 6: Install spring and plastic spacers on AFC Delete head

Step 7: Preload spring w/ fingers and catch throttle bracket.



← Step 7:



← Step 8 & Step 9:

Step 5:

Step 4:

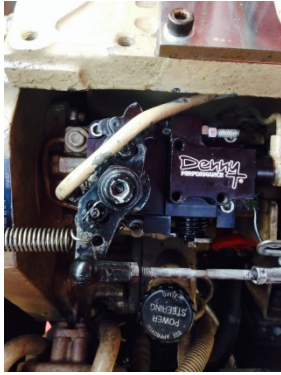
Step 8: Realign throttle shaft to previous orientation. Seat throttle shaft lever on splines of throttle shaft.

Step 9: Install plastic washer and lock washer around throttle shaft.

Step 10: Install upper throttle lever and bushing. Tighten bushing using 8mm allen wrench.

Step 11: Install throttle return spring and linkage ball socket.

Step 12: Install front fuel line using 14mm wrench



← Step 10, Step 11, Step 12



Step 13:



Step 13: Disconnect air intake at turbo inlet. Have a helper ready w/ a small clean piece of plywood (large enough to cover turbo inlet and keep hands clear of turbo inlet). This is in the event a runaway condition occurs. IN THE EVENT OF A RUNAWAY PLACE BOARD FIRMLY OVER TURBO INLET TO CHOKE AIR SUPPLY TO THE MOTOR. ALSO ROTATING MANUAL FUEL SHUTOFF LEVER COUNTER CLOCKWISE CAN SHUT OFF MOTOR.

Step 14: Start Truck. Adjust idle to liking (800rpm-900rpm). Confirm function of manual shutoff lever by rotating manual shut off lever counter clockwise. Truck should turn off when you do this. It should then quickly restart with the key.

Step 15: Go out and enjoy your truck with the new Denny T AFC Delete.

Good Luck! Feel free to call Denny T at (254) 741-6922 with any installation questions.

Instructions written by Kyle Talbot (@kyletalbot_01) and Zach Brodeur (@zach_brodeur)

05/06/2014

