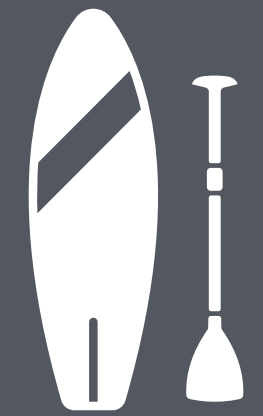


## INSTRUCTIONS

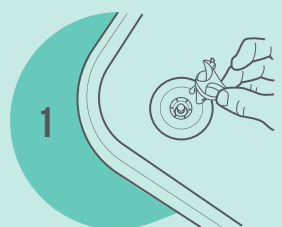


# iSUP

missionboatgear.com

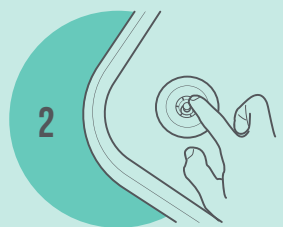
### Inflation

For faster inflation, start with the pump in "Double Action" mode. When it becomes difficult to pump, switch the lever over to "Single Action."



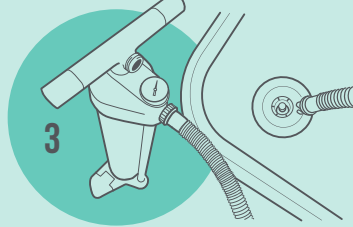
Lay flat with valve up. Remove cap.

\* Avoid rough surfaces like driveways.



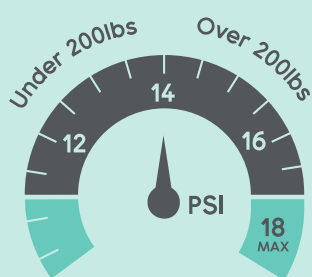
Click the valve stem up to ensure that it is closed.

\* If it is not closed, air will escape when the hose is removed.



Attach the hose to the **INF** port on the pump.

Insert hose into the valve and turn clockwise to lock.



Inflate to desired pressure.

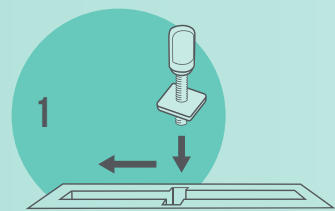
**Users under 200lbs** - 12 PSI minimum

**Users over 200lbs** - 14 PSI minimum

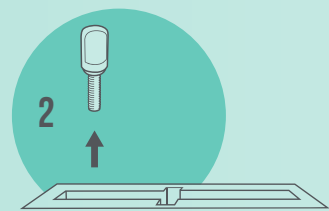
\* More pressure leads to stiffer boards.

**DO NOT INFLATE BEYOND 18 PSI**

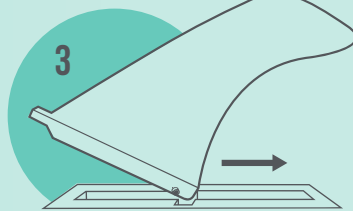
### Fin Installation



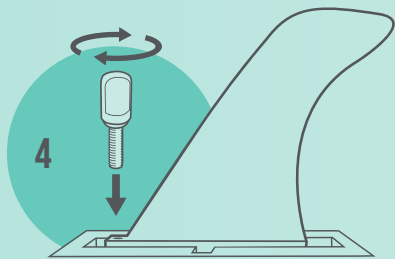
Thread nut on the end of the screw, then place it into the channel nut down, sliding it up to the front.



Remove the screw, leaving the nut in the channel.



Place fin in channel, sliding peg toward the back, lining up the front hole with the nut in the channel.

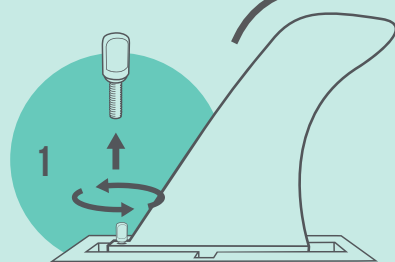


Tighten screw in front hole into square nut.

To adjust position of the fin, loosen the screw slightly to slide fin forward and backwards in channel.

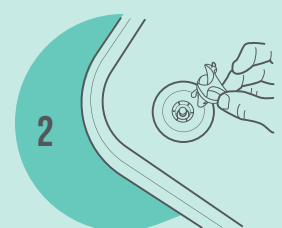
\* Slide fin forward for quicker turning. Slide back for better straight-line tracking.

### Deflation



Remove the fin by loosening the screw then sliding the fin out of the channel. Be sure to also remove the square nut.

\* Store the square nut and screw on the fin so you don't lose them.



Remove cap. Click the valve stem down to open valve.

\* Avoid rough surfaces like driveways.

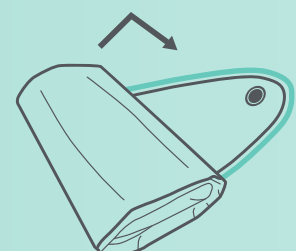
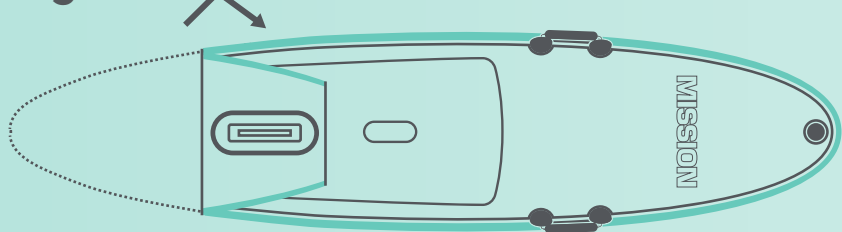


To fully deflate, attach hose to pump using **DEF** port. Use "double action" setting for fast deflation.

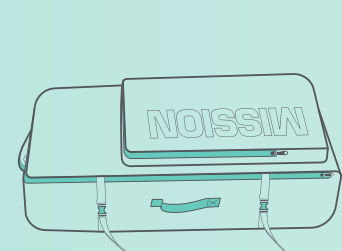


Click the valve stem up to close valve. This keeps iSUP deflated for best fold.

### Folding



Working from tail to nose, loosely fold in 12" sections.



ALWAYS store deflated iSUP in bag.



Are you a visual learner?

Scan this QR Code and watch instructions on missionboatgear.com.

## Contents

Read all instructions and warnings before each use.

1 MISSION Inflatable Paddle Board

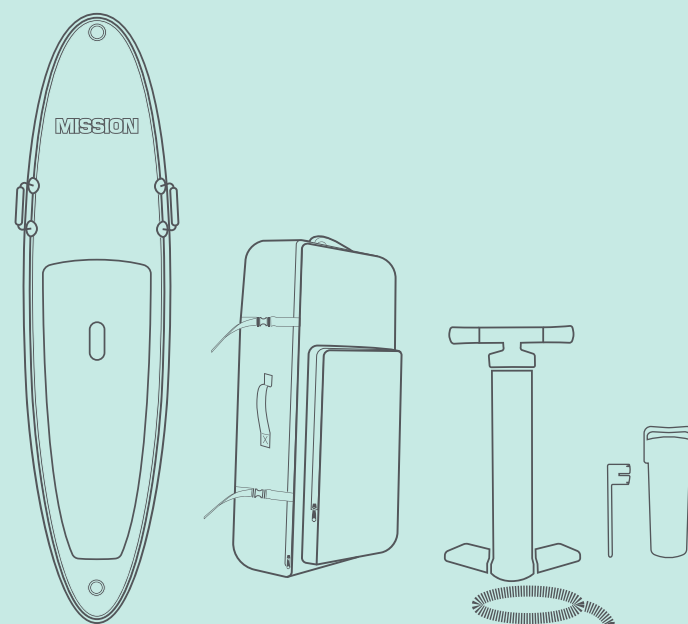
1 High-Pressure, Dual-Action, Manual Pump

1 Removable Fin (and two extra sets of hardware so you're covered)

1 Storage Backpack

1 Repair Kit (just in case)

1 Valve Wrench



### Paddle Adjustments

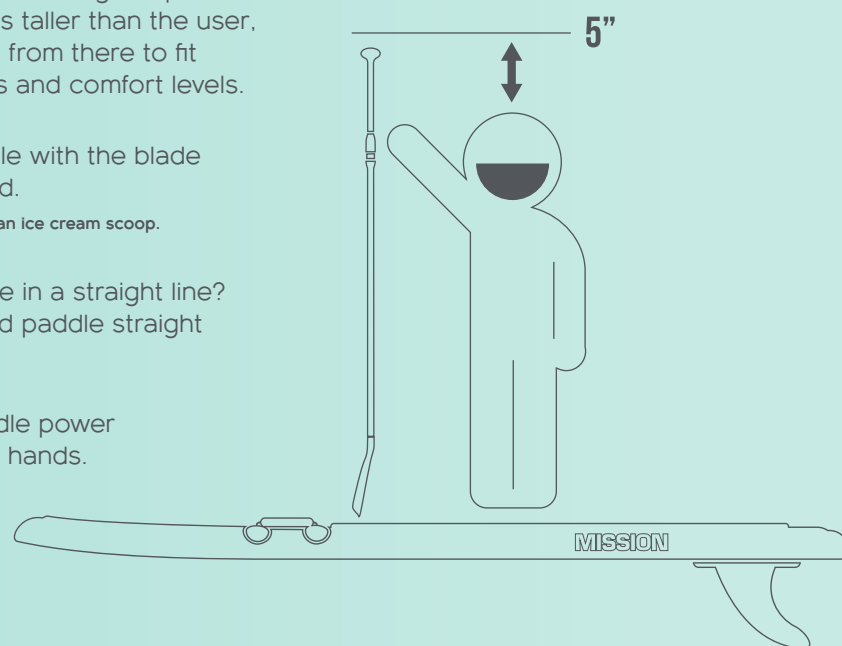
We recommend setting the paddle height 5 inches taller than the user, then adjusting from there to fit different styles and comfort levels.

Hold the paddle with the blade angled forward.

\* The paddle is NOT an ice cream scoop.

Want to paddle in a straight line? Be sure to hold paddle straight up and down.

For more paddle power separate your hands.



### FAQ

What should I use to clean my iSUP?

Clean with mild soap and water as necessary. Never use solvents or abrasive cleaners.

- MISSION Vinyl Cleaner is the perfect cleaner for your iSUP.
- Never use a pressure washer to clean your iSUP. Permanent damage will occur.

Why is my valve leaking air?

It's most likely a loose valve. Use the included valve wrench to tighten.

### Storage

Always store your deflated iSUP in bag.

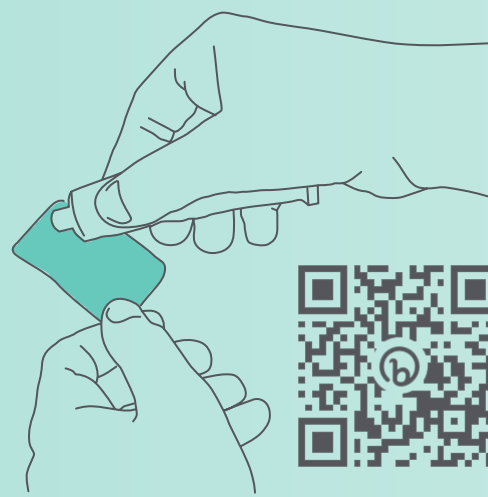
Never drag your deflated iSUP on concrete or hard surfaces.

**WARNING:** Creased edges of folded iSUP are vulnerable to damage.

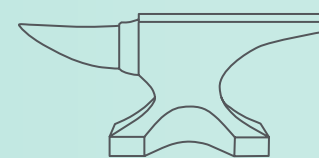
Store iSUP in bag in a cool, dry location protected from sharp objects and critters.

For long term storage: Be sure to completely dry your iSUP with a soft cloth to prevent mold and mildew.

### Repair



Need to make a repair? Bummer. But don't worry, we'll walk you through it. Scan this QR Code and watch full repair instructions on missionboatgear.com.



To repair your iSUP with a patch, apply consistent weight while patch dries.



Allow 24 hours for patch to cure.

# MISSION

We're on a mission to help people have fun and enjoy more of their time on the water. We're driven by our curiosity and inspired by our imagination to seek new adventures, make more memories, and create the products to make it all possible.

Life is out there. Let's go find it.

# WARNING!

USE OF THIS PRODUCT INVOLVES INHERENT RISKS OF INJURY OR DEATH.

## To reduce risk:

Always wear an appropriate U.S. Coast Guard-approved personal flotation device (PFD) when using your inflatable on the water.

Never paddle alone. Let someone know where you plan to go and when you plan to return.

Never use this product in waves unless you have received the appropriate training and have mastered use on flatwater first. In certain conditions, a surf leash may be beneficial, or required - consult your local training facility or pro-shop for guidance.

Get paddlesports instruction from a licensed or certified instructor.

Never go paddleboarding in severe weather or water conditions that might affect your ability to steer the board or return to shore. Never underestimate the forces of nature.

Do not paddle near swimmers, other watercraft, docks, pilings, or any other obstacles. A collision could cause you or them injury.

Inspect all equipment prior to use for signs of damage, wear, or failure. Do not use if damaged.

Tighten vent cap before taking board into the water to avoid unintended air leaks.

Regularly inspect vent cap o-ring for cracks, tears, and/or damage before use to avoid unintended air leaks.

The storage bag presents a risk of suffocation. Keep away from children.

Avoid prolonged exposure to direct sunlight when out of the water to avoid excessive heating, fading and drying-out of the material, leading to a failure.

Do not use this product for any purpose other than as a stand-up paddleboard.

Do not transport on a motor vehicle while inflated.

