

LÈLIOR

---

DE PARIS

L'ART DE PARIS

IL770



## IMPORTANT

Please comply with the following for safety reasons.

---



Do not modify or disassemble the scent machine without first consulting Lèlior.

In case of product failure please contact us.

---



Do not use the power cord if it is damaged, kinked or cut. It's a fire hazard.

---



To avoid electrical shock, do not touch the power adaptor or the machine while plugged into the electrical socket during a thunderstorm or lightning.

---



Do not dismantle or try to repair the machine while its plugged into the electrical outlet or in operation.

---

## CONTENTS

DISCOVER THE POWER OF SCENTING! .....	3
FEATURES .....	3
TECHNOLOGY .....	4
SPECIFICATIONS .....	5
DIAGRAM OF PARTS .....	6
ACCESSORIES .....	6
WHERE TO PLACE THE DIFFUSER .....	7
INSTALLATION INSTRUCTIONS .....	8
TIMER SETTINGS.....	11
INTENSITY SETTING .....	13
WORKING GROUP SETTING.....	15
MAINTENANCE.....	17
TROUBLESHOOTING.....	18
CAUTIONS.....	19
FAQs .....	21

## DISCOVER THE POWER OF SCENTING!

Scent is a fantastic way to express yourself, reduce stress, enhance happiness, give your memory a boost, increase your energy, sleep better, and uncover a host of other benefits. The IL770 will change the way you think about scents and reveal a multitude of ways to use in your home or business. Simply add your favorite scents and transform your space in to whatever you need it to be. The IL770 allows you to easily tailor your scent experience to your preferences and your space. With unique cold-air diffusion technology, this diffuser scents your environment subtly and consistently while preserving the quality of your 100% Essential or Aroma Oils.

Its sleek design and modern aesthetic look will help you make any space more inviting and vibrant.

## FEATURES

- Scents 1,500 cubic meter of space
- Heat-free cold-air diffusion technology that subtly disperses essential oils in to the air
- Wall mount or stand-alone
- Adjustable fragrance intensity and hours of operation
- Quiet and energy efficient
- Eco-friendly and made from recycled aluminum and glass
- No water or heat
- Leaves no residue

## TECHNOLOGY

The IL770 uses nebulization (cold-air diffusion) technology to diffuse our aroma oil blends, this is a process that breaks down the oils into a very fine dry mist. Nebulization preserves the intention and integrity behind our oils while maximizing their olfactive and therapeutic powers, without diluting in water, solvent, or using heat.

This patented nebulizing technology, combined with our commercial fragrance oil blends, produces nanoparticles that suspend in the air for several hours creating a clean and consistent ambient scent, without chemical undertones.

Commercial fragrance diffusers help to create an emotional connection with consumers by creating lasting impressions, memories, and multi-sensory responses, all while increasing energy, inspiring brand loyalty, improving sales, masking unpleasant odors, reducing dust, pet dander allergens, and other airborne allergens from non-living matter. Cold-air diffusers support healthy indoor air quality while providing ambiance and well-being for you, your employees, and clientele.

Diffusing helps to reduce dust, pet dander allergens, and other airborne allergens from non-living matter (e.g. dust mite matter allergens) while our 100% all natural diffuser blends bring nature's goodness into your space by supporting harmony and balance.

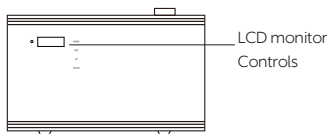
Using only our essential and aroma oil blends will guarantee the best performance of your diffuser. No mixing or diluting with water, carrier oils or alcohol is required. Simply fill the bottle with what nature created and enjoy!

## SPECIFICATIONS

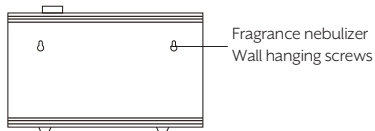
[ Model ]	IL770
[ Dimension ]	300 x 259 x 124 mm
[ Machine N.W. ]	4.2kg
[ Voltage ]	Input: AC100V-240V 50/60Hz Output: DC12VIA Cable length: 120cm / 3.93ft
[ Technology ]	Cold Air Diffusion Technology
[ Power ]	110-240 volt power source
[ Coverage ]	400 sq.m / 1,500m <sup>3</sup> / 53,000 ft <sup>3</sup> / 4,000 sq.ft
[ Bottle capacity]	300ml
[ Material ]	Machine: Aluminum, Glass Bottle: glass Nozzle: Aluminum, Brass
[ Accessories ]	Power adapter, Manual, Nails, Screws, Wall bracket.

## DIAGRAM OF PARTS

Front side



Top side



## ACCESSORIES



adaptor



Bottle



Manual



Screws,Nails



Mounting Bracket

---

Check and make sure the packaging is complete when you first open it if parts are missing, please contact us.

## WHERE TO PLACE THE DIFFUSER

**Applications:** aromatherapy, ambient scenting and odor control in home or business.

**Location:** The IL770 is designed to be used as a table-top, wall mount unit.

**Scenting Coverage:** L770 can be adjusted to scent an area ranging from 100 to 4,000 sq.ft. (10 to 400 sq.m)

**Scent Intensity:** Adjust your scenting experience and hours of operation through the internal touch LCD timer.

**Device Location:** The most important element of your scenting experience is to properly position the device in the room, to ensure optimal performance and control.

### Below are our suggestions

- Choose the location where the aroma oil molecules can use the natural airflow in a room. This is particularly important with air-conditioned spaces. The best location for the IL770 is where there is a lot of airflow.
- If you are not sure of the direction of the airflow, simply turn on the IL770 and using a flashlight point it at the scent output and watch where the scent will travel. Alternatively, light up a match and blow it out immediately. The direction of the scent or smoke will tell you which way the fragrance will travel.
- The IL770 is a luxury and aesthetically beautiful device. Always keep it in an open area and do not hide it behind or under pieces of furniture.
- Try a variety of locations and settings until you are happy with the scent coverage. Give IL770 a little time to adjust to the new location and setting before changing it again.



## INSTALLATION INSTRUCTIONS

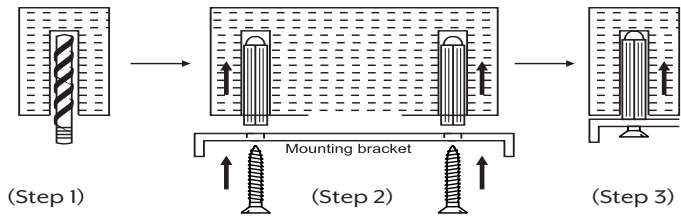
IL770 can be used as a portable device, wall mounted . If you are wall mounting, please follow the below instructions. If you are using the device as a free-standing unit, please go to page 15 to set up the timer.

### Parts and Tools Required

You will require the following tools to wall mount, If using IL770 as a stand-alone or shelf top unit no installation or tools are required.

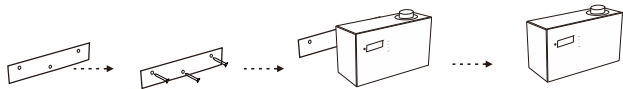
1. A level to ensure the wall mount bracket is exactly horizontal.
2. A hammer for the dry wall anchors.
3. A Philips screwdriver to match the screws provided or any other screwdriver that matches the screws to attach to the anchors you have selected.

### Mounting Wall Bracket



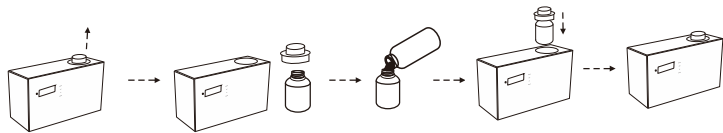
1. Using drill bit make a hole in the drywall the size of the plug.
2. Insert the drywall plug. If needed tap lightly with a hammer to fully insert the plug.
3. Screw the bracket to the wall aligning with drywall plugs.

### Wall Mounting:



1. Always make sure the IL770 is mounted straight up.
2. Attach the wall bracket with all the supplied screws or nails (depending on the surface).
3. Hang the machine on its hinges.

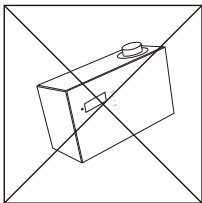
### Filling the oil bottle:



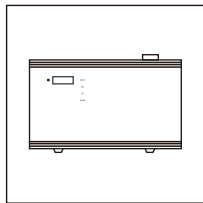
1. Unplug the machine from the outlet.
2. Open the door.
3. Unscrew the bottle.
4. Fill the bottle with fragrance.
5. Screw the bottle back on the machine straight and snug.
6. Close the door.

**Warning:**

After installation, please keep the machine vertical. Tilting or placing it flat may cause an oil overflow. If the IL770 is tilted, the oil will over flow inside and may potentially damage the machine.



**WRONG**



**CORRECT**

## TIMER SETTINGS ▪



### Power ON

Connect the 12V adaptor to the outlet and turn ON the power switch. Local time and scent intensity level will appear.

### Screen Lock and Unlock

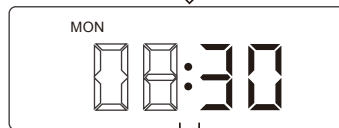
The LCD screen will automatically lock itself after 10 seconds if not used. Press **SET** and hold for 5 seconds to unlock the display.

## Set local time and week

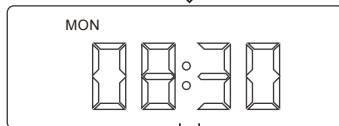
Press SET button,  
the digit of hour flashing  
Press UP or DOWN button to  
choose correct working hour



Press SET button,  
the digit of minute flashing  
Press UP or DOWN button to  
choose correct working minute



Press SET button,  
the digit of minute flashing  
Press UP or DOWN button to  
choose correct working minute



SET



Press SET to confirm  
and move to another position.

## Setting Scent Intensity

You are now ready to start scenting. Remember, the IL770 is a high performance adjustable device capable of scenting spaces from 100 to 4,000 sq.ft. Once the fragrance is in the device, basic operation is simply adjusting the scent level to match the room size, conditions, and your taste.

Using the belowing method to control the scent intensity.

Start at minimum and watch the scent spread through out your space. If needed, adjust the buttons to increase or decrease the intensity accordingly.

This is a unique and powerful performance feature of the IL770. Once you have chosen the right setting, you should only have to adjust slightly with the different fragrances.

Press **MODE** button,  
**SCENT WORK** flashing.  
Press **UP** or **DOWN** button to choose  
working seconds  
( 5 seconds to 300 seconds be  
selected)

MODE



SCENT  
WORK

60

Press **MODE** button,  
**SCENT PAUSE** flashing.  
Press **UP** or **DOWN** button to choose  
working seconds  
( 5 seconds to 300 seconds be  
selected)

MODE



SCENT  
PAUSE

60

### **Recommended Intensity Settings.**

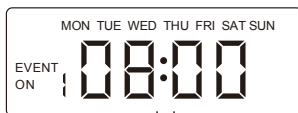
The grading system starts from setting (30 Seconds on, 30seconds off )being the lowest and ends with setting ( 300 seconds on , 30 seconds off) being the highest. Short but frequent bursts are recommended. Using the lower settings will allow for a subtler scenting experience without being over powering. Intensity setting is personal and depends on multiple factors, such as air flow, the location of the scent machine and how subtle or strong you want the scent to be. Use your discretion and start out at Grade 1 and work your way up if needed.

To test if the intensity is too strong or too light, leave the scented area for at least 5 minutes and re-enter after getting some fresh air. Only then will you be able to tell if the intensity grade needs to be adjusted up or down.

Please note that the human nose gets used to a fragrance after 30 minutes of exposure. If at any point during the diffusion process you don't smell the scent anymore simply leave the scented area and reenter after getting some fresh air.

## Setting working groups

Press MODE button,  
the first working on group  
will be displayed



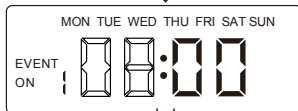
Press SET button,  
the digit of hour flashing  
Press UP or DOWN button to  
choose correct working hour

SET



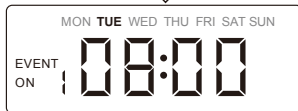
Press SET button,  
the digit of minute flashing  
Press UP or DOWN button to  
choose correct working minute

SET



Press SET button,  
the letter of week flashing  
Press UP or DOWN button to  
choose correct working day

SET



Press SET to confirm  
and move to another  
position.

SET

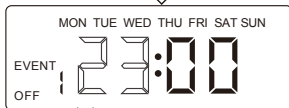




Press MODE button to enter first working off group setting.  
Press SET button, the digit of hour flashing, press UP or DOWN button to choose correct working off hour



Press SET button, the digit of minute flashing  
Press UP or DOWN button to choose correct working off minute



SET



Press SET to confirm and move to another position.

(The first working period is set to factory default setting, 7 am ON and 21:00 OFF. The rest are at set to 00:00)

Available working period	07:00 21:00	00:00 00:00	00:00 00:00	00:00 00:00	00:00 00:00
MON	ON/OFF	ON/OFF	ON/OFF	ON/OFF	ON/OFF
TUES	ON/OFF	ON/OFF	ON/OFF	ON/OFF	ON/OFF
WED	ON/OFF	ON/OFF	ON/OFF	ON/OFF	ON/OFF
THUR	ON/OFF	ON/OFF	ON/OFF	ON/OFF	ON/OFF
FRI	ON/OFF	ON/OFF	ON/OFF	ON/OFF	ON/OFF
SAT	ON/OFF	ON/OFF	ON/OFF	ON/OFF	ON/OFF
SUN	ON/OFF	ON/OFF	ON/OFF	ON/OFF	ON/OFF

## MAINTENANCE

### **Machine cleaning:**

1. We recommend cleaning the IL770 every 2 months.
2. When changing oil clean out the diffuser.
3. If scent diffusion becomes weak, cleaning is recommended.

### **Cleaning steps:**

1. Empty the oil from a canister and replace with 20ml of rubbing alcohol.
2. Screw the bottle into the diffuser and turn the machine ON for 20 min to clean out the diffuser head and tube.
3. Pour out the rubbing alcohol (no rinsing required) and replace with your favorite aroma oil blend.

### **Tips:**

You can start using the scent machine immediately after cleaning it. There is no need to wash the tube.

## IMPORTANT

- After installation make sure the diffuser, bottle and pump box are ALWAYS vertical and not tilted or on its side.
- When the machine is on pause and not diffusing the atomization icon will be displayed.

## TROUBLESHOOTING

Before submitting a warranty claim, please try the below steps to diagnose the problem and fix the issue. For warranty information, please contact Lèlior at +1 855- 553-5467 or send us an email at help [info@Lèlior.com](mailto:info@Lèlior.com)

<b>Problem</b>	<b>Solution</b>
No diffusion	<ul style="list-style-type: none"><li>- Check if the power is ON or OFF.</li><li>- The pump is damaged and needs replacing.</li><li>- If there is no diffusion or it is weak, replace the oil with rubbing alcohol and run it through the machine for 5 min.</li></ul>
Little or no spray coming out	<ul style="list-style-type: none"><li>- Atomization head is blocked. Clean diffuser by running rubbing alcohol through it. Or replace diffuser core.</li><li>- Diffuser core with straw is missing or damaged. Replace with a new one.</li><li>- Pump is damaged and may need replacing.</li></ul>
Diffuser spraying liquid	<ul style="list-style-type: none"><li>- Diffuser core is damaged. Replace diffuser core.</li><li>- Machine is tilted or angled. Make sure it's upright at all times.</li></ul>
Oil leaking	<ul style="list-style-type: none"><li>- Bottle is loose. Screw it in properly and straight.</li><li>- Seal is broken or missing. Replace the supplied seal that came with the machine.</li></ul>
Abnormal sound	<ul style="list-style-type: none"><li>- Pump is loose or damaged. Tighten the pump or replace.</li></ul>
No display on screen	<ul style="list-style-type: none"><li>- Make sure the power is ON. Press SET for 5 seconds.</li><li>- Check the plug for damage. Try another outlet. If plug is damaged replace.</li><li>- Display screen is damaged. Replace.</li></ul>

## CAUTIONS

- Only use the power adapter supplied with the device.
- Never operate the diffuser if the power adapter is damaged.
- Do not use the diffuser if any part of the device is broken.
- To reduce the risk of electric shock, do not attempt to service the device in any way other than as described in the “Care & Maintenance” section of this manual.
- Do not disassemble or attempt to repair the diffuser; in the event of a problem, please contact us at +1 855-553-5467  
or email [info@Lèlior.com](mailto:info@Lèlior.com)
- When moving the device, always keep it upright and secure with both hands.
- Always place the unit on a stable, level surface, i.e., shelf or a table.
- Do not plug the unit into the wall socket with wet hand
- Do not pour water or other liquids into the bottle with aroma oil.
- Do not tilt, move, or attempt to empty or refill unit while in operation.
- To prevent clogging of the diffuser, run rubbing alcohol once a month for 15 min.
- Always turn off and unplug the device during maintenance or when not in use.
- Ensure that the power adapter is not covered or blocked when plugged in; it must be able to dissipate the heat properly.
- Do not cover the diffuser with objects or material while in use.
- Keep the device at least 24" from the ceiling.
- Use only AromaTech diffuser blends; other oils may contain fragrances, base oils or synthetics that could result in malfunction. Some single note essential oils are also too thick or heavy for use in the ultrasonic diffuser. See FAQs for more information.
- In case of smoke, unusual scent, loud noise, or other malfunction, unplug the unit immediately and discontinue use. Further use may result in fire or electrical shock.
- Do not immerse the unit in water.
- Always keep unit out of reach of small children and pets.
- Store at 0°C - 50°C (32°F - 122°F) and 5% - 95% humidity.

**CAUTION:** Always be cautious of where you place the IL770. Make sure it cannot be tipped over as that may cause some aroma oil to leak out. Keep out of reach of children. Avoid getting aroma oil liquid in contact with wood or other delicate surfaces.

**NOTE:** Do not place the IL770 near an HVAC return grill, exhaust fan or vent, open door or a window as that will cause the scent to escape the space. Remember you want to work with the natural airflow not against it.

**IMPORTANT:** Keep nose clear from fragrance output when the device is operating. Instead, wave air towards nose to experience fragrance.

**TIP:** As a rough estimate, start with level 1 and go up from there. When you change a scent level, give the IL770 some time to equalize the scent level throughout the space before you decide if you need to adjust.

## FAQs – IL770

### **Q: What size room can IL770 handle?**

The IL770 is fully adjustable for different size areas. It is most effective in spaces from 100 to 4,000 square feet (10 to 400 square meters). Depending on the essential or aroma oil you use it may cover more area since some oils are more potent than others. Ideal for scenting large spaces such as living rooms, large bedrooms, office space or even an entire home, IL770 is the most potent and discrete diffuser on the market.

### **Q: Where can I place the IL770?**

You must place the IL770 on a flat surface where it can take full advantage of the natural airflow in the space. If placed on the tabletop or a shelf, make sure it doesn't tip. Alternatively, you can wall mount it. When wall mounting the IL770, make sure it is secured properly and is at least 6 feet off the ground and 20" from the ceiling. Refer to the User Manual for more details

### **Q: Do I need to adjust IL770?**

Yes! IL770 is a very powerful device that can handle small and very large spaces. If it is set too high for the room size, it can cause discomfort for some people. Adjusting scent intensity is easy. Simply touch the SET, up and down button on the device to set interval time, working seconds and pause seconds

### **Q: How strong should I make the scent?**

Remember, less is more. The IL770 allows you to get rid of bad odors and create a unique ambiance with small amounts of scent. Unlike other air fresheners, the IL770 can be adjusted with a simple touch. Human noses become used to scent very fast, so if you don't smell the scent anymore, that doesn't mean it's not there. Simply leave the scented area and re-enter with a fresh nose to get a better feel of how strong it is.

**Q: What is the capacity of the IL770 bottle?**

The IL770 uses a 300ml bottles. The fragrance diffuser is designed only to take Lèlior bottles specific to the diffuser.

**Q: How long does the essential oil last in the bottle?**

The IL770 uses a 300ml bottle of essential or aroma oil that will last 2-3 weeks with daily usage running about 12 hours a day. To preserve the essential oil, we highly recommend using the internal 24/7 timer and set it up so that the diffuser doesn't run at night. Depending on the essential oil you are using that time may increase or decrease. Some essential oils diffuse a lot faster due to their consistency and viscosity.

**Q: What is the average oil consumption of the AromaPro?**

Oil consumption strongly depends on the essential or aroma oil used. Essential oils diffuse faster than aroma oils. Average oil consumption ranges from 1ml – 2ml per hour.

**Q: What if my unit does not turn on?**

Check to make sure the power adapter is correctly plugged into the DC power jack and the electrical source. If hours of operation timer is set incorrectly and you are trying to diffuse during the time that the machine is programmed to be off the AromaPro will not scent.

**Q: How do I unlock the LCD if it is locked and I can't control the device?**

IL770's intuitive timer is designed to lock itself (shut off) after 10 seconds if not in use. To unlock the display simply press and hold the SET button for 5 seconds.

**Q: What if my unit does not scent or there is almost no scent coming out?**

Check first that there is aroma oil in the bottle and the bottle is screwed in straight and snug. If there is fragrance in the bottle but you still don't smell anything then either the device is in rest or pause mode, turned off, or the diffuser core is clogged and needs cleaning. Please see "Care & Maintenance" instructions.

**Q: Will the IL770 cover my entire house?**

It can, but it depends on how big your house is and how many air handlers you have in your home. If you have more than 1 air handler, you will require an additional IL770.

**Q: What if my house is larger than 4,000 square feet?**

In this case, we recommend switching up to the IL10000-5m . It's a very powerful HVAC scent machine that is capable of scenting spaces up to 15,000 square feet.

**Q: What type of oils can I put in my home diffuser?**

Use only Lèlior diffuser blends; other blends and oils may contain base oils that could result in clogging the device. Many single note essential oils should not be used in the diffuser. Single note essential oils may have a thick or heavy consistency that can clog the diffuser and cause it to stop diffusing scent. Lèlior diffuser blends have been carefully blended to be effective for you, and safe and easy to use in your cold-air diffuser.

**Q: Is IL770 safe to use with children and pets?**

Yes. When used as directed and only with Lèlior essential and aroma oil blends, IL770 is the safest cold-air diffuser available. Make sure to request SDS if you require more info about the oil being diffused.

**Q: Is IL770 Diffuser Eco-Friendly?**

Lèlior diffusers are the most Eco-friendly made products on the market. Unlike aerosols, the IL770 uses no propellants, phthalates and produces no harmful volatile organic compounds (VOCs). Unlike many air fresheners, IL770 uses no ethanol or similar solvent to enhance the evaporation of essential and aroma oils.

**Q: Warranty and Support?**

All products designed by Lèlior come with a 1 year limited warranty.  
If you have any questions or issues, simply contact us at +1 855-533-5467 or email [info@Lèlior.com](mailto:info@Lèlior.com)