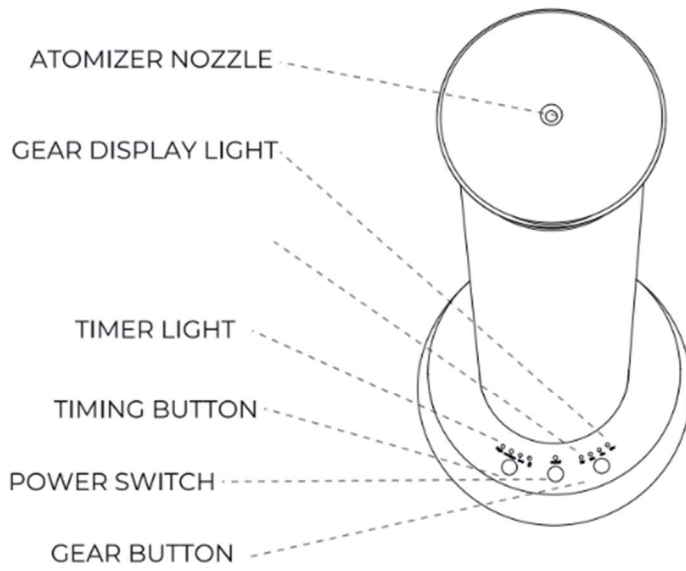


LÈLIOR
DE PARIS

**LE VERSAILLES
IL600**

MANUAL

01 INTRODUCTION



PRODUCTS AND ACCESSORIES



AROMA DIFFUSER



ADAPTER(OPTION)



TYPE-C CABLE

02 USAGE INSTRUCTIONS

To power on the diffuser, press the  button.

Use the middle button to switch between low, medium, and high settings:

Low: Operates for 15 seconds, then pauses for 200 seconds.

Medium: Operates for 15 seconds, then pauses for 100 seconds.

High: Operates for 15 seconds, then pauses for 60 seconds.

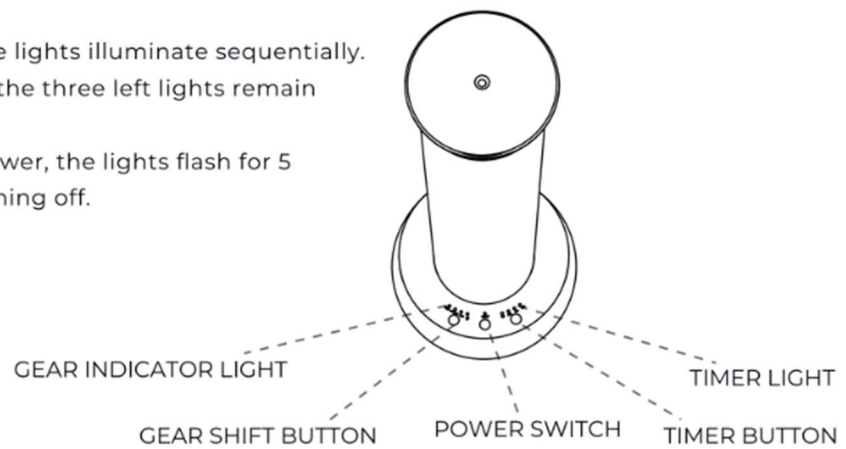
The diffuser is designed for DC5V-2A power input.

Charging Indicator:

When charging, the lights illuminate sequentially.

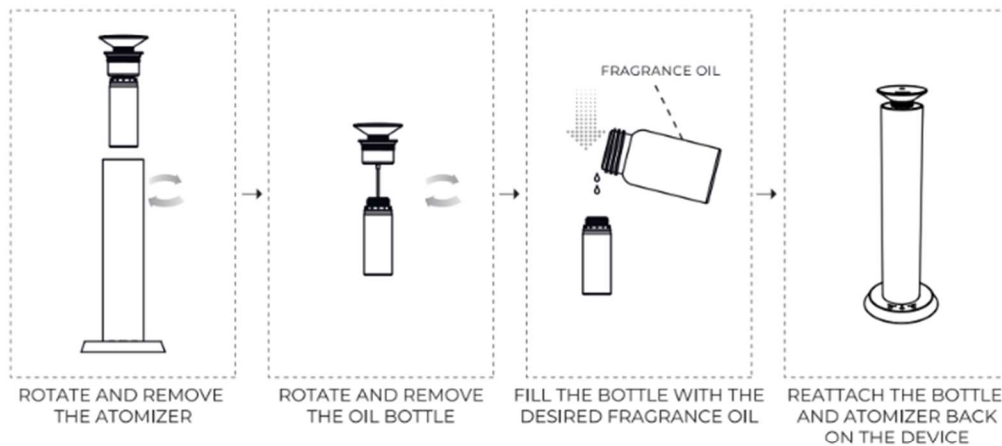
After a full charge, the three left lights remain continuously lit.

When providing power, the lights flash for 5 seconds before turning off.



03 FILLING INSTRUCTIONS

HOW TO FILL THE OIL BOTTLE



ESSENTIAL OIL REPLACEMENT

Before refilling essential oils, ensure that the device has been turned off for at least 2 minutes. Additionally, unscrew the essential oil bottle only after the oils within the atomizing head have been fully consumed.

To maintain the quality of your essential oils, it is advisable to control the amount added during each refill within a 45-day timeframe. This precaution helps prevent essential oil deterioration due to oxidation.

04 MAINTENANCE

For optimal fragrance diffusion performance, it is recommended that customers conduct device inspections and maintenance every six months. Additionally, should the need for a new fragrance arise or if the diffusion effect becomes diminished, timely maintenance is advised.



CAREFULLY UNSCREW THE USED OIL BOTTLE



POUR AN APPROPRIATE AMOUNT OF ALCOHOL INTO THE OIL BOTTLE TO THOROUGHLY CLEAN IT.

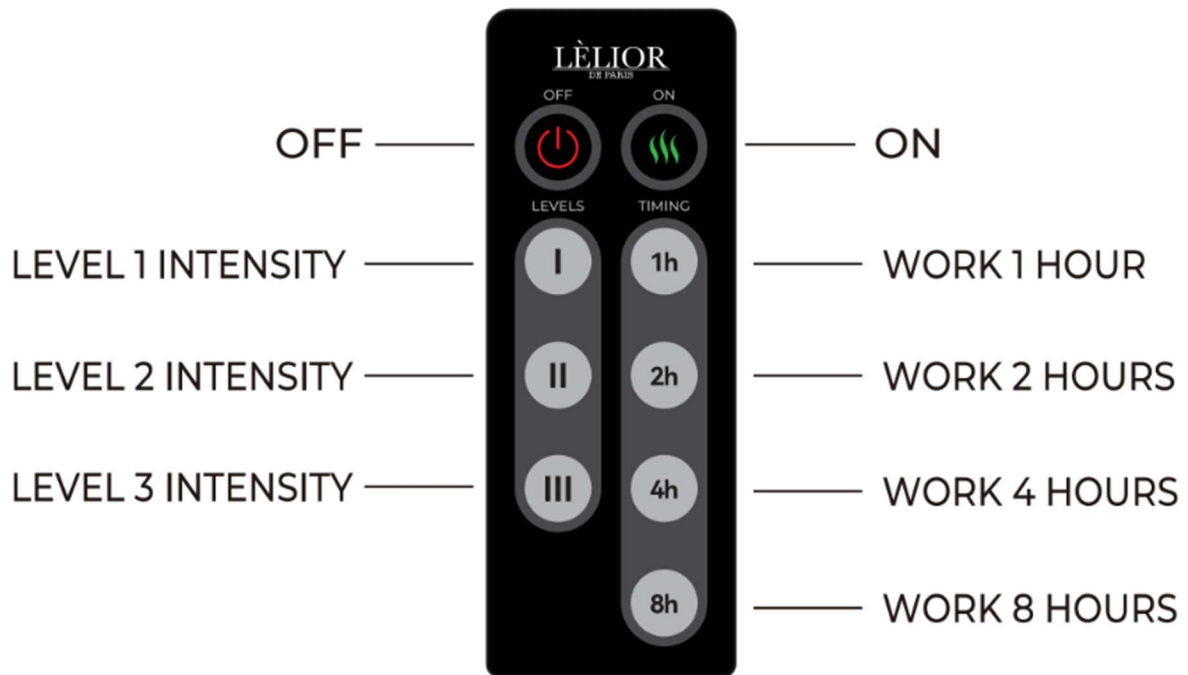


FOLLOWING THE CLEANING PROCESS, REFILL THE OIL BOTTLE WITH A SMALL AMOUNT OF ALCOHOL. THEN, INSERT IT INTO THE DIFFUSER AND ACTIVATE THE DIFFUSER, ALLOWING IT TO RUN FOR 5-8 MINUTES.



ONCE THE DIFFUSER HAS COMPLETED THE CLEANING CYCLE, REMEMBER TO TURN OFF THE POWER.

05 REMOTE



06 PARAMETERS

PRODUCT NAME	Le Versailles Diffuser	BATTERY CAPACITY	10000MA
PRODUCT MODEL	IL600	PRODUCT SIZE	340*φ120 mm
POWER	2W	NET WEIGHT	1.5kg
INPUT	DC5V-2A (Type-C)	GROSS WEIGHT	3.5kg
COVERAGE	600ft ²	PACKING LIST	Aroma diffuser + Adapter(option) + Cable
OIL BOTTLE CAPACITY	100ML	MACHINE NOISE	≤30dB

07 TROUBLESHOOTING

Before requesting a replacement from Lèlior, we encourage you to refer to the troubleshooting instructions below for diagnosis and potential resolution.

FAULT TYPE	POTENTIAL SOLUTIONS
DEVICE NOT OPERATING	Ensure the power adapter is DC5V-2A and that the DC end has been securely inserted. Verify that the device is currently set to operate within its designated working hours.
NO ATOMIZATION OR WEAK ATOMIZATION	Check if the air pump is functioning properly. Examine the mist outlet for the presence of the airflow atomizing core and ensure the oil suction pipe is neither loose nor obstructed. Inspect the sealing ring of the air nozzle for any damage or displacement.
OIL LEAKAGE	Confirm that both the essential oil bottle and the atomizing head are securely tightened. Inspect the sealing ring of the atomizing head for any deformities or damage.
ABNORMAL NOISE	If the air pump is loose, reattach and secure it properly.. If the air pump is damaged, please contact Lèlior for assistance in obtaining a new diffuser.

08 ATTENTION

- Do not utilize overloaded power sockets, damaged power cables, or adapters, as they pose potential safety hazards. Promptly replace any faulty components to prevent fire risks.
- Unless you possess technical expertise, refrain from attempting to modify, disassemble, or repair the device. Unauthorized tampering may result in device damage.
- In case of device abnormalities, first ensure it adheres to normal operating requirements. If issues persist, consult the troubleshooting guide. If problems persist, promptly contact the seller for assistance. Do not tilt or invert the device during use.
- When relocating the equipment to other locations, it's essential to perform equipment maintenance and cleaning (see Equipment Maintenance section for details) before packaging and transporting to prevent essential oil leakage and equipment damage.
- Regularly maintain and clean the equipment to ensure it remains in optimal working condition.

LE VERSAILLES DIFFUSER



PRODUCT MODEL: IL600