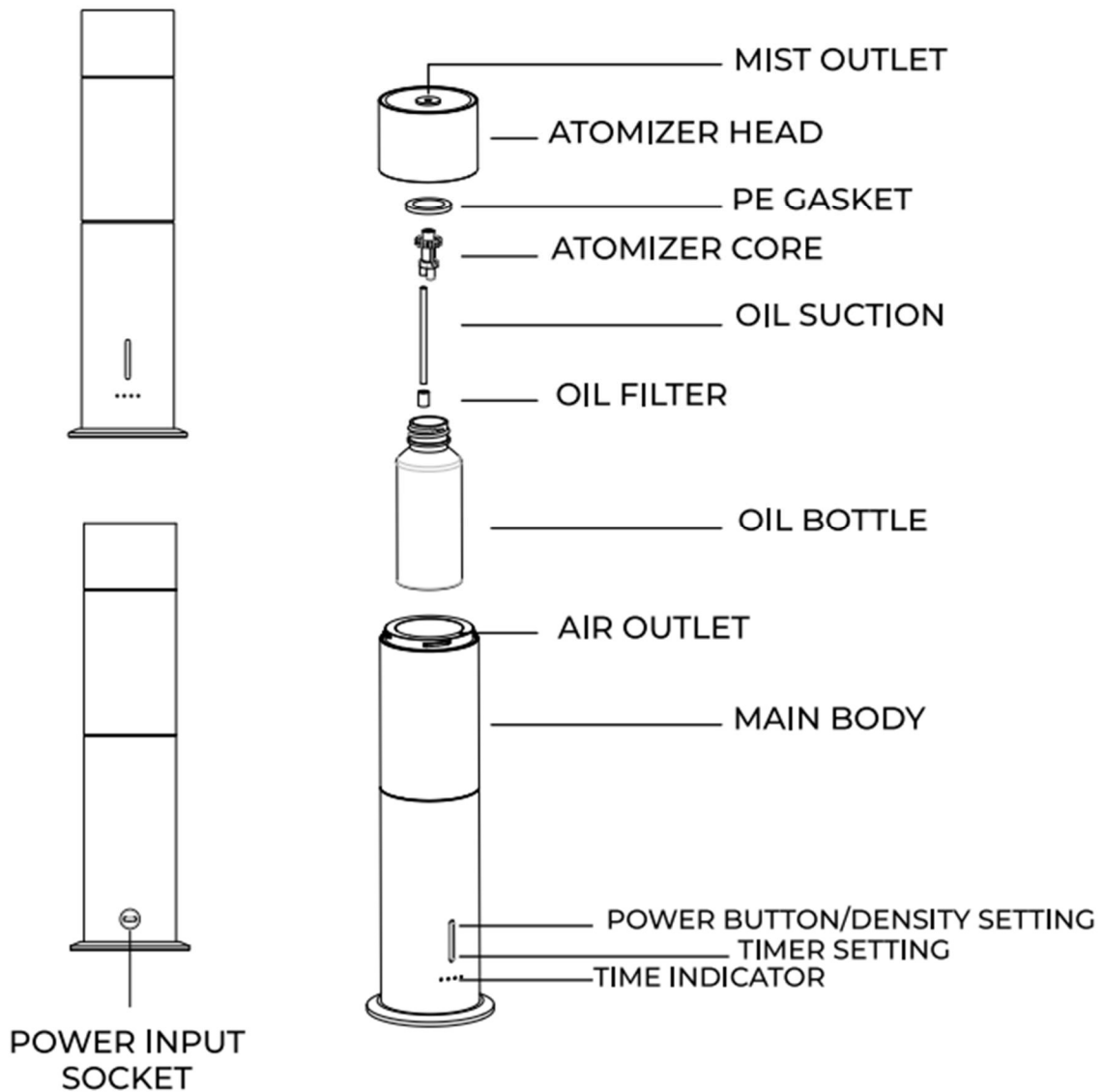


LÉLIOR

DE PARIS

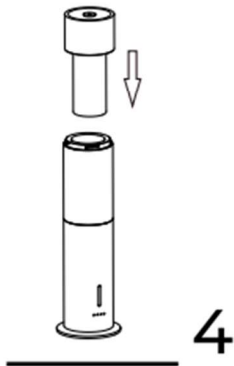
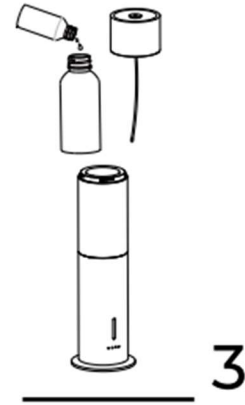
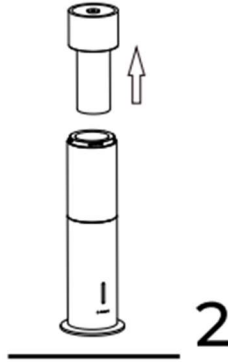
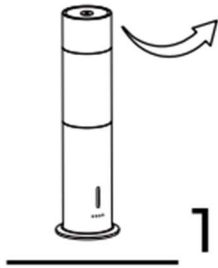
IL555 L'Étoile Diffuser

USER MANUAL

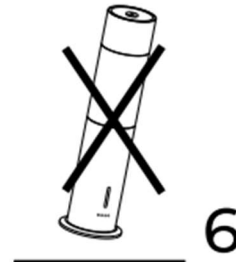
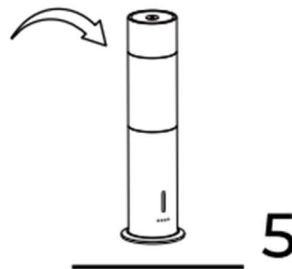


INSTALLATION NOTES

COUNTER CLOCKWISE
TO LOOSEN



CLOCKWISE
TO TIGHTEN



GENTLY TWIST AND LIFT THE TOP COVER OF THE DEVICE TO ACCESS THE INTERIOR.

CAREFULLY REMOVE THE OIL BOTTLE FROM THE ATOMIZER HEAD.

FILL THE PROVIDED OIL BOTTLE WITH YOUR DESIRED ESSENTIAL OIL.

REATTACH THE OIL BOTTLE TO THE ATOMIZER HEAD, THEN SECURELY TIGHTEN THEM IN PLACE WITHIN THE MAIN BODY OF THE DEVICE.

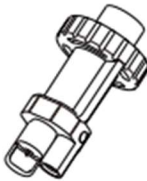
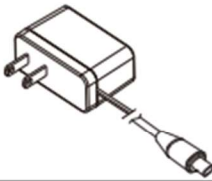



CONNECT THE DEVICE TO A POWER SUPPLY AND PRESS THE POWER BUTTON TO INITIATE ITS OPERATION.

IMPORTANT: AVOID TURNING THE DEVICE UPSIDE DOWN AFTER LOADING ESSENTIAL OIL TO PREVENT ANY POTENTIAL LEAKAGE.

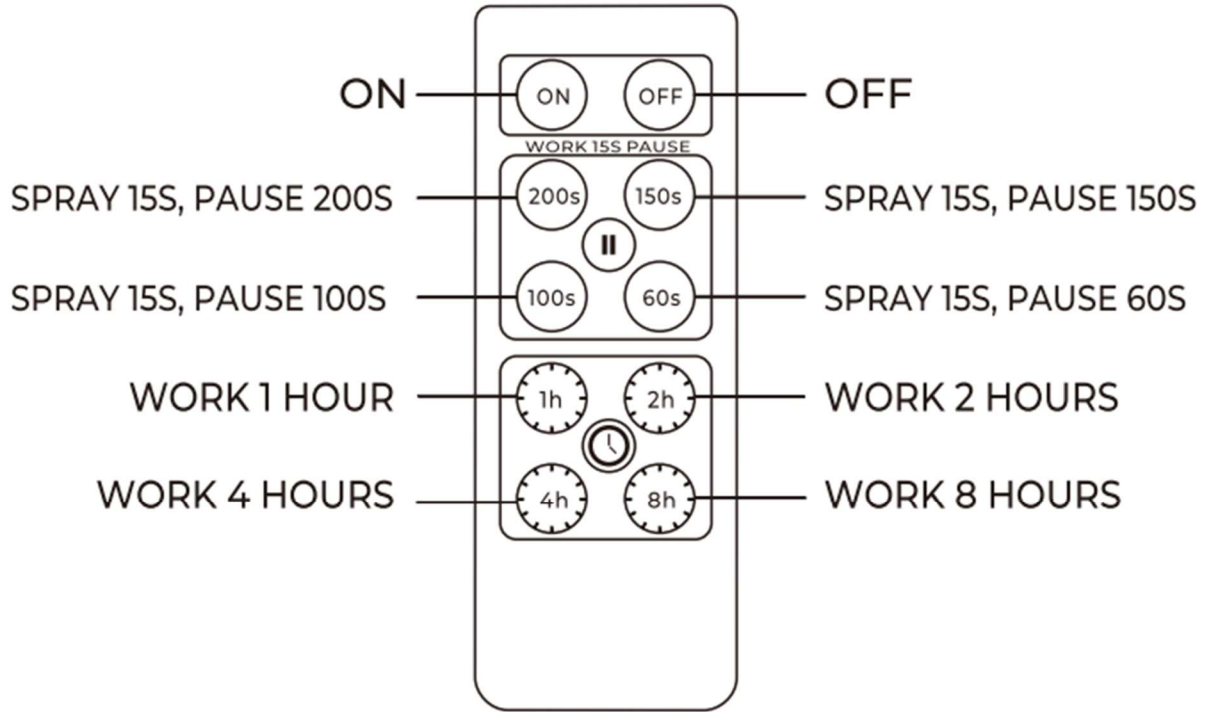
PRODUCT PARAMETER

SIZE	Φ66*Φ85*H306(mm)	COVERAGE	500ft ²
OIL CAPACITY	120ml	POWER SOURCE	DC5V
NET WEIGHT	0.9kg	RATED POWER	1W
BATTERY	4000MAH		

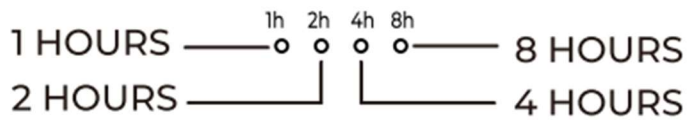
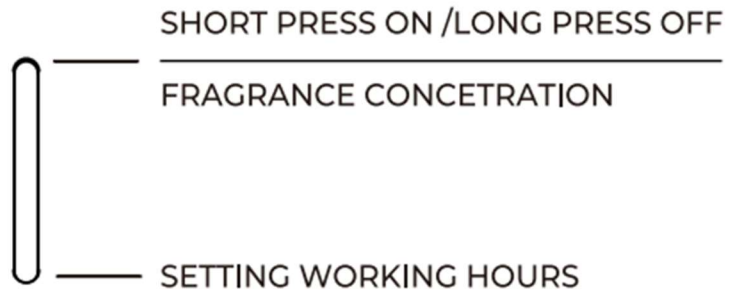
ACCESSORIES

NAME	IMAGE
ATOMIZER CORE	
POWER ADAPTER	
PE GASKET	
REMOTE	
USER MANUAL	

REMOTE



DEVICE SETTINGS



TROUBLESHOOTING

BEFORE PROCEEDING WITH AN EXCHANGE REQUEST FOR THE DEVICE, WE RECOMMEND TRYING TO ADDRESS THE ISSUES BY FOLLOWING THE STEPS OUTLINED BELOW.

ISSUES	POTENTIAL SOLUTIONS
NO MIST OR LOW MIST OUTPUT	VERIFY THAT THE POWER SUPPLY IS TURNED ON. IF NOT, ENSURE CORRECT POWER SUPPLY CONNECTION. INSPECT THE AIR OUTLET AIRFLOW. IF AIRFLOW IS INSUFFICIENT, CLEAN OR REPLACE THE ATOMIZING CORE. IF AIRFLOW IS STILL ABNORMAL, CONSIDER REPLACING THE AIR PUMP. EXAMINE THE PE GASKET/RUBBER RING OF THE ATOMIZING HEAD/OIL SUCTION PIPE FOR DAMAGE OR DISPLACEMENT.
OIL LEAKAGE	CHECK FOR DAMAGE TO THE ATOMIZING HEAD. IF DAMAGED, PLEASE CONTACT THE SUPPLIER FOR ASSISTANCE. INSPECT THE PE GASKET FOR DAMAGE. IF FOUND DAMAGED, REPLACE IT WITH A SPARE PART. ENSURE PROPER TIGHTENING OF THE ESSENTIAL OIL BOTTLE AND THE ATOMIZING HEAD TO PREVENT LEAKAGE.
INCREASED NOISE LEVEL	ENSURE THE AIR PUMP IS SECURELY FASTENED IN PLACE. IF LOOSE, REATTACH THE AIR PUMP PROPERLY. IF THE AIR PUMP IS DAMAGED, GET IN TOUCH WITH THE SUPPLIER FOR A REPLACEMENT.

DEVICE MAINTENANCE

TO ENSURE OPTIMAL AROMA EFFECTS, CUSTOMERS SHOULD ENGAGE IN REGULAR INSPECTIONS AND MAINTENANCE OF THE DEVICE AS OUTLINED BELOW.

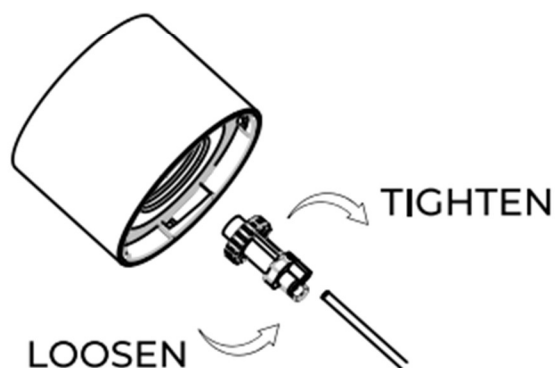
1. UNSCREW THE ATOMIZING HEAD AND REMOVE THE ESSENTIAL OIL BOTTLE FROM THE DEVICE.

2. ADD AN APPROPRIATE AMOUNT OF ALCOHOL INTO THE ESSENTIAL OIL BOTTLE AND USE IT TO CLEAN THE BOTTLE THOROUGHLY.

3. ONCE CLEANED, PUT A SMALL AMOUNT OF ALCOHOL INTO THE CLEANED ESSENTIAL OIL BOTTLE. REATTACH THE OIL BOTTLE TO THE ATOMIZING HEAD, INSERT THE MAIN BODY, ROTATE IT UNTIL SNUG, AND THEN POWER ON THE DEVICE FOR 5 TO 10 MINUTES.

4. ONCE THE CLEANING PROCESS IS COMPLETE, REMEMBER TO TURN OFF THE POWER.

5. FOR ATOMIZING CORE MAINTENANCE OR REPLACEMENT, FOLLOW THESE STEPS: DETACH AND REATTACH THE ATOMIZING CORE AS DEMONSTRATED IN THE PROVIDED SKETCH.



⚠ PRECAUTIONS

WE ADVISE YOU TO THOROUGHLY READ THIS INSTRUCTION MANUAL BEFORE UTILIZING THE DEVICE AND ENSURE ITS SAFEKEEPING FOR FUTURE REFERENCE.

1. ALWAYS AVOID USING OVERLOADED POWER SOCKETS, DAMAGED POWER CORDS, OR PLUGS, AS THEY COULD POSE SAFETY RISKS AND EVEN LEAD TO POTENTIAL FIRE HAZARDS. PROMPTLY REPLACE ANY FAULTY COMPONENTS WITH APPROPRIATE ONES.

2. REFRAIN FROM ATTEMPTING TO OPEN THE DEVICE'S CASE YOURSELF. IN THE EVENT OF ANY ABNORMALITIES WITH THE DEVICE, PLEASE REACH OUT TO THE SELLER FOR ASSISTANCE AND GUIDANCE.

3. ENSURE THE DEVICE IS NOT TURNED UPSIDE DOWN AFTER ADDING ESSENTIAL OIL TO PREVENT ANY POTENTIAL LEAKAGE. THIS SIMPLE MEASURE WILL HELP MAINTAIN THE INTEGRITY OF THE ESSENTIAL OIL AND DEVICE FUNCTIONALITY.

WARRANTY PERIOD:

VALID FOR A DURATION OF ONE YEAR STARTING FROM THE DATE OF PURCHASE.

WARRANTY COVERAGE:

ENCOMPASSES THE EQUIPMENT ITSELF.
EXCLUDES SHELLS, WIRES, AND EXTERNAL PIPES.
EXCLUDES DAMAGE CAUSED BY HUMAN ERROR OR ACCIDENTS.
EXCLUDES MAINTENANCE SERVICES BEYOND THE PROVIDED WARRANTY PERIOD.

SHOULD YOU ENCOUNTER ANY POST-PURCHASE ISSUES, PLEASE FEEL FREE TO GET IN TOUCH WITH OUR AUTHORIZED SALES AND SERVICE PROVIDERS IN YOUR REGION OR REACH OUT TO OUR DEDICATED SALES CENTER FOR ASSISTANCE.

WARRANTY CARD

THIS WARRANTY CARD SERVES AS A QUALITY ASSURANCE DOCUMENT AND MUST BE COMPLETED WITH ACCURATE INFORMATION.

WARRANTY CARD #1	
WARRANTY DATE	
FAULT DESCRIPTION	
CALIBRATION DATE	
REPAIR RESULTS	
REPAIRER SIGNATURE	
WARRANTY CARD #2	
WARRANTY DATE	
FAULT DESCRIPTION	
CALIBRATION DATE	
REPAIR RESULTS	
REPAIRER SIGNATURE	

DEVICE SETTING

POWER ON: BEGIN BY CONNECTING THE DEVICE TO THE POWER SUPPLY. A BRIEF PRESS OF THE POWER BUTTON WILL ILLUMINATE THE LIGHT, INDICATING THAT THE DEVICE IS NOW ACTIVE AND READY FOR USE.

POWER OFF: TO TURN OFF THE DEVICE, PRESS AND HOLD THE POWER BUTTON UNTIL THE LIGHT GOES OFF, INDICATING THAT THE DEVICE HAS BEEN POWERED DOWN.

ADJUSTING FRAGRANCE CONCENTRATION:

BRIEFLY PRESS THE UPPER END OF THE POWER BUTTON TO CYCLE THROUGH FOUR LEVELS OF FRAGRANCE CONCENTRATION:

GREEN LIGHT: 15-SECOND SPRAY, FOLLOWED BY A 200-SECOND PAUSE.

BLUE LIGHT: 15-SECOND SPRAY, FOLLOWED BY A 150-SECOND PAUSE.

ORANGE LIGHT: 15-SECOND SPRAY, FOLLOWED BY A 100-SECOND PAUSE.

MAGENTA LIGHT: 15-SECOND SPRAY, FOLLOWED BY A 60-SECOND PAUSE.

SETTING WORKING HOURS:

BRIEFLY PRESS THE LOWER END OF THE POWER BUTTON TO TOGGLE THROUGH FOUR DEVICE WORKING TIME OPTIONS:

OPTION 1: 1 HOUR OF CONTINUOUS OPERATION.

OPTION 2: 2 HOURS OF CONTINUOUS OPERATION.

OPTION 3: 4 HOURS OF CONTINUOUS OPERATION.

OPTION 4: 8 HOURS OF CONTINUOUS OPERATION.