

LÈLIOR
DE PARIS

ARÈNE DE PARIS
5M

IL1000 - 5M

LÈLIOR
DE PARIS

MANUFACTURED FOR:
LÈLIOR GROUP LLC
1226 NW 23RD AVE
FORT LAUDERDALE, FL 33311
INFO@LELIOR.COM

Congratulations

Congratulations on purchasing your new scent IL1000-5M and Diffuser(s). The IL1000-5M and Diffuser(s) is the ideal system for larger areas and environments which utilize HVAC systems.

Instructions

Read the instructions carefully and keep them in a safe place. Set up the machine according to this manual and adjust the scenting strength to the environment. The machine is now ready to diffuse your essential and aroma oils.

Important Safeguards

Follow basic safety precautions, including:

1. This appliance must only be used by or under the supervision of a responsible adult.
2. Do not place the machine, cable or plug in any liquid; don't use the machine in a bathroom, near water, or outdoors.
3. Position the power cable to prevent it from being a tripping hazard.
4. Do not use the machine for any other purpose than diffusing of essential oils and aroma oils. No other substance should be diffused in the machine.
5. Only use the machine with the supplied power cable. Before connecting the machine to a power outlet, check that the voltage label on the unit is the same as your power supply.
6. Always switch off and unplug the equipment before moving, cleaning or servicing.
7. Although the machine can be left switched on even when the oil has been used up, it is recommended to switch the unit off when the fragrance bottle is empty.
8. Always keep the Diffusers in a vertical position if the bottle is in place.

Unpacking the Machine

1. Open the carton Box and remove the protective insert and power cable.
2. Carefully remove the IL1000-5M from its box and bag.
3. Check the contents of the box when unpacking the machine. If you detect any transport damage, please contact your dealer.

Overview

The fragrance oil is dispersed into a dry mist of microscopic droplets through pressure of filtered cold air, known as cold air diffusion. This dry mist of fragrance is released sending a consistent scent to the desired areas.

There are two main components to the machine, the IL1000-5M and the Diffuser. The IL1000-5M connects to the Diffuser in order to atomize the scent either directly into a space or through a HVAC system.

Diffuser Models:

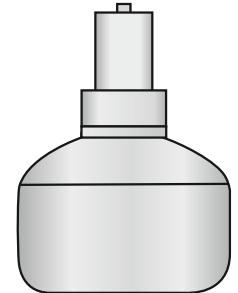
Diffuser HVAC
Back / Top Plate



Diffuser Wall
Complete

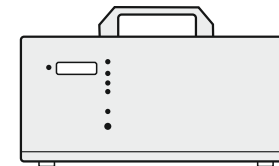


Diffuser Drum



IL1000-5M Models

:



Setup for Non-HVAC

The Wall Diffuser Complete with Cover – is designed to be installed within the scented space. The IL1000-5M can be positioned on the other side of the wall or in the roof cavity above the wall. The diffuser features a Silencer which releases the fragrance directly into the room.

1. Remove the Diffuser cover
 - a. Remove the single screw located on the top of the unit.
 - b. Gently slide the cover up approximately 10mm (0.4 in)
 - c. Remove the cover by moving it away from the diffuser back plate.
(To replace the diffuser cover, reverse removal instructions.)
2. Mount the diffuser to the wall. The Wall Diffuser should be mounted to the wall no lower than 1.8m (5.9 ft) from the floor and not within 300mm (1 ft) of the ceiling. The Diffuser must be positioned vertically on the wall, with the fragrant mist exiting straight up. Follow the detailed instructions in the 'Mounting the Diffuser' section on [page 12](#).
3. Position and Install the IL1000-5M. The IL1000-5M should be positioned in a location with minimal dust; this may require that it be placed on a shelf away from the floor. As some slight vibration may occur in areas with HVAC units, ensure that the location will not allow the IL1000-5M to fall under any circumstances.

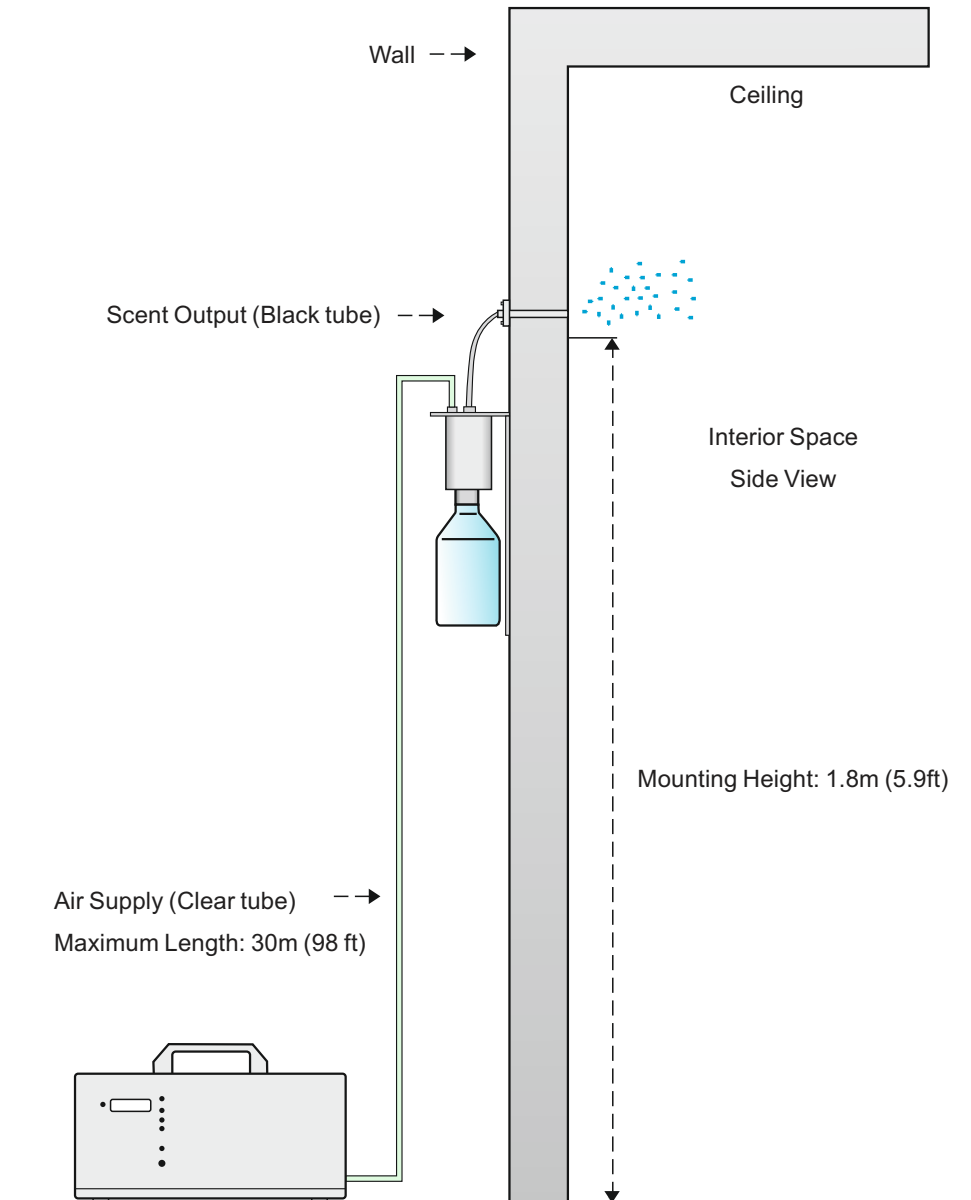
Note: The IL1000-5M must be placed in a well ventilated area.

Connect the IL1000-5M to a power outlet using the supplied power cable.

4. Connect the air supply. The clear 6mm tube connects the air supply from the IL1000-5M to the Diffuser's Black Plastic Connection.
5. Insert the fragrance cartridge. Follow the instructions in the 'Install fragrance cartridge' section on [page 16](#).
6. Set the IL1000-5M timer. Follow the instructions in the 'Setting the strength timer' section on [page 17](#).

Diagram for Non-HVAC

This diagram illustrates a side view of the Wall Diffuser mounted to the wall with the Scent Output tube feed through the wall into the desired scented space.



Setup for HVAC - Wall Diffuser with 500ml bottle

Wall Diffuser – is designed to be mounted to near or onto to the HVAC ducts itself. The Diffuser features a Hose Coupling connector that allows the fragrant mist to be transferred to the HVAC Duct via 6mm plastic tubing.

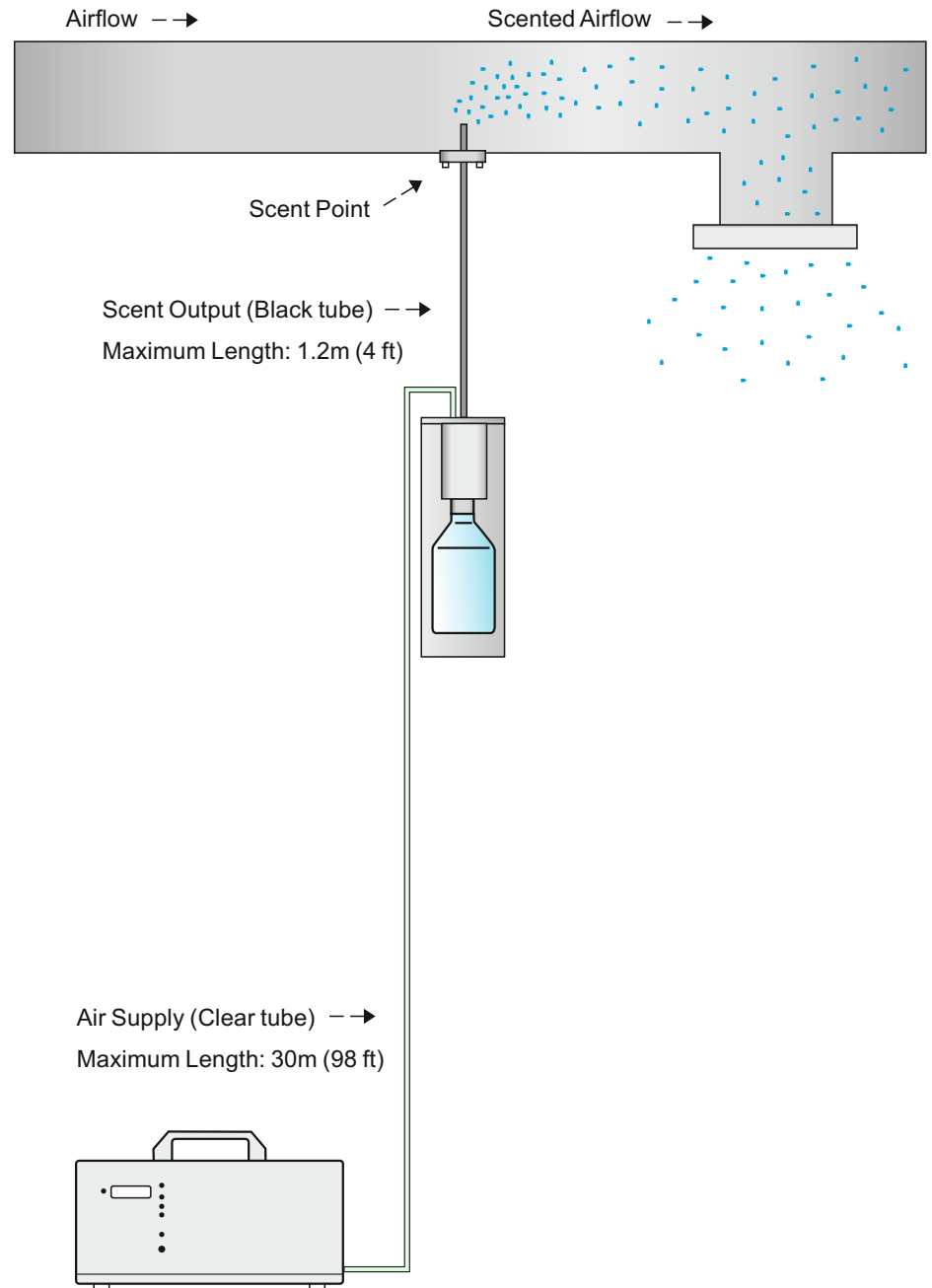
1. Mount the diffuser either to a wall or the HVAC duct itself. The diffuser must be positioned vertically on the wall or duct, with the fragrance mist exiting straight. Follow the detailed instructions in the 'Mounting the Diffuser' section on page 12.
2. Position and Install the IL1000-5M. The IL1000-5M should be positioned in a location with minimal dust; this may require that it be placed on a shelf away from the floor. As some slight vibration may occur in areas with HVAC units, ensure that the location will not allow the IL1000-5M to fall under any circumstances.

Note: The IL1000-5M must be placed in a well ventilated area.

Connect the IL1000-5M to a power outlet using the supplied power cable.

3. Connect the Air Supply. The clear 6mm tube connects the Air Supply from the IL1000-5M to the Diffuser's black elbow plastic connection.
4. Connect the Scent Output. The black 6mm tube connects the Scent Output from the Diffuser metal hose coupling to the HVAC ducting. Make sure the Scent Output tube is straight without pockets, see the 'Installing the Scent Output tube' section on page 14. To ensure the tube is attached firmly to the Duct, connect the Scent Point to the side of the duct, this provides a sealed connection for the 6mm tube to be attached. We recommend creating an air tight seal with some Silicone in addition to mounting screws. Follow the instructions in the 'Mounting the Scent Point' section on page 14.
5. Insert the fragrance cartridge. Follow the instructions in the 'Install fragrance cartridge' section on page 16.
6. Set the IL1000-5M timer. Follow the instructions in the 'Setting the strength timer' section on page 17.

Diagram for HVAC - Wall Diffuser with 450ml (16 fl. oz.) bottle



Setup for HVAC with 2 Liter (0.44 Gallon) Drum

The Drum Diffuser – is designed to be screwed directly onto the top of a 2 Liter (0.44 Gallon) Drum next to the HVAC Ducts. The diffuser features a Hose Coupling connector that allows the fragrant mist to be transferred to the HVAC Duct via 6mm plastic tubing.

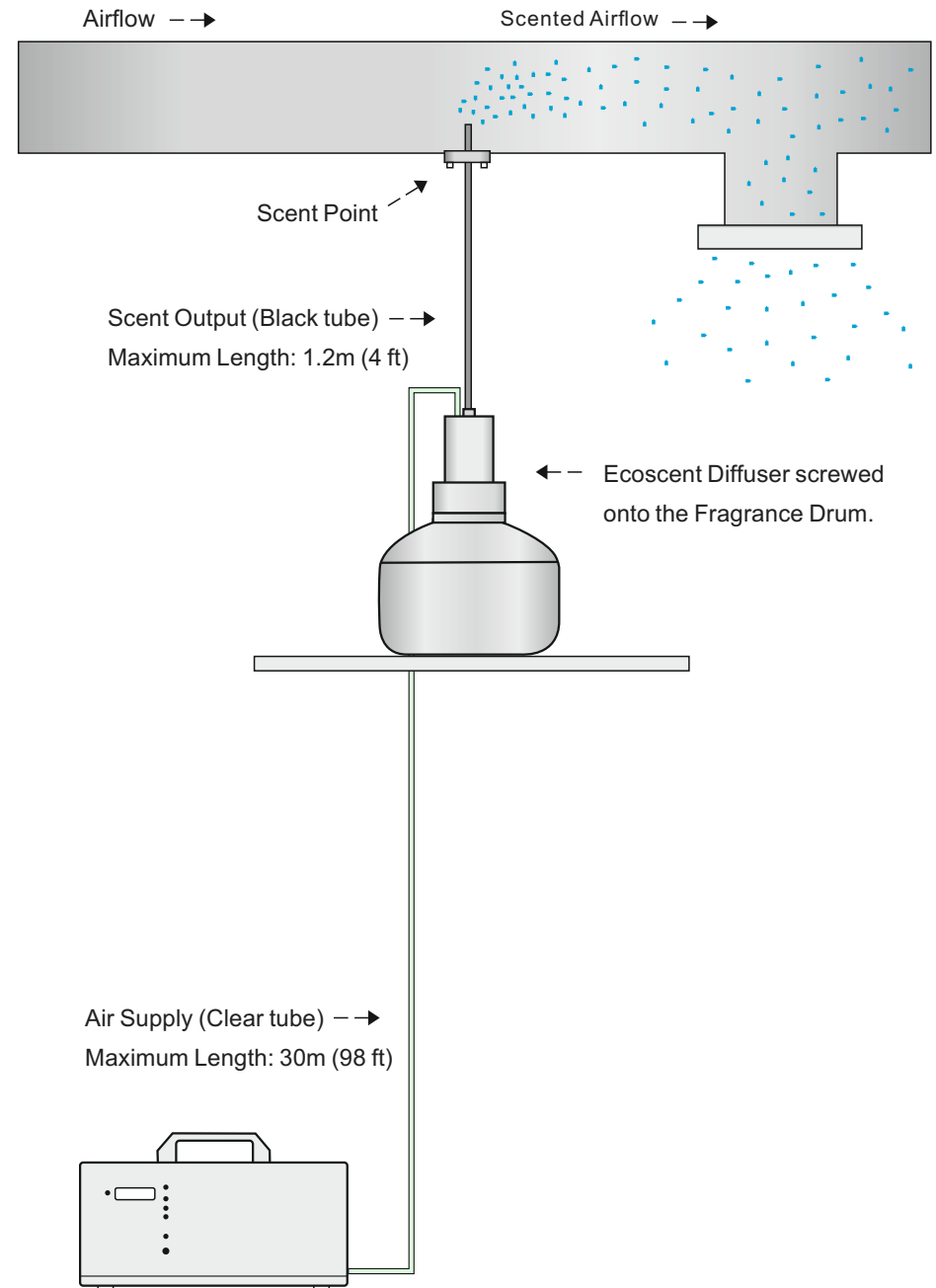
1. Screw the diffuser onto the Drum. The Drum should be placed next to the HVAC Ducts and allow easy access for replacing depleted drums in future. The Drum must be positioned vertically, with the fragrant mist exiting straight up. An optional Drum Bracket is available allowing a drum to be wall mounted via a secure strap.
2. Position and Install the IL1000-5M. The IL1000-5M should be positioned in a location with minimal dust; this may require that it be placed on a shelf away from the floor. As some slight vibration may occur in areas with HVAC units, ensure that the location will not allow the IL1000-5M to fall under any circumstances.

Note: The IL1000-5M must be placed in a well ventilated area.

Connect the IL1000-5M to a power outlet using the supplied power cable.

3. Connect the Air Supply. The clear 6mm tube connects the Air Supply from the IL1000-5M to the Diffuser's black elbow plastic connection.
4. Connect the Scent Output. The black 6mm tube connects the Scent Output from the Diffuser metal hose coupling to the HVAC ducting. Make sure the Scent Output tube is straight without pockets, see the 'Installing the Scent Output tube' section on [page 14](#). To ensure the tube is attached firmly to the Duct, connect the Scent Point to the side of the duct, this provides a sealed connection for the 6mm tube to be attached. We recommend creating an air tight seal with some Silicone in addition to mounting screws. Follow the instructions in the 'Mounting the Scent Point' section on [page 14](#).
5. Insert the fragrance cartridge. Follow the instructions in the 'Install fragrance cartridge' section on [page 16](#).
6. Set the IL1000-5M timer. Follow the instructions in the 'Setting the strength timer' section on [page 17](#).

Diagram for HVAC with 2 Liter (0.44 Gallon) Drum



Mounting the diffuser

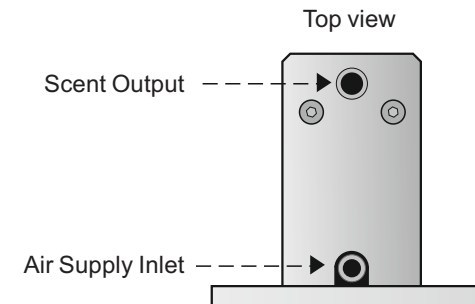
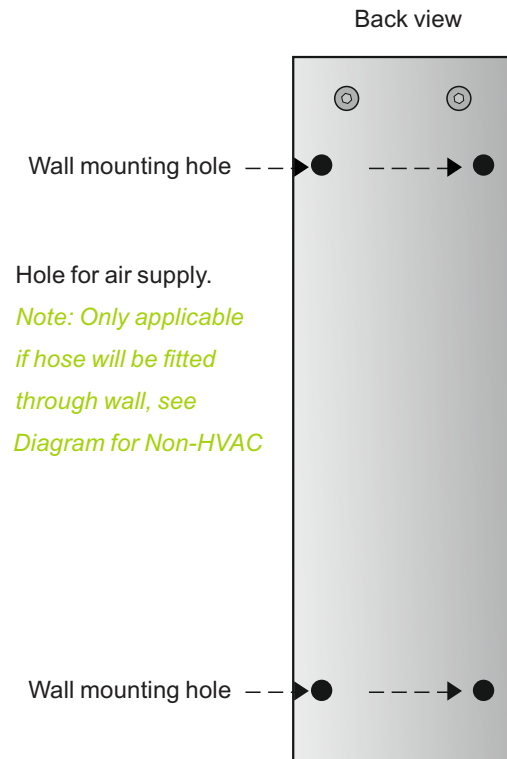
For Concrete walls:

- Determine the location of the diffuser
- Make sure the mounting plate is level, by placing a spirit level on top of the plate.
- Mark the wall with a pencil through the screw holes.
- Drill 4 x 8mm (0.3 in) mounting holes and 1 x 10mm (0.4 in) hole for the Air Supply Tube
- Use concrete plugs and screws to attach the mounting plate to the wall.

For Stud / Plaster walls:

- Determine the location of the diffuser. Try to locate a stud with a stud finder and ensure that at least two screws are fitted against solid material. For the other two holes, normal fasteners for hollow walls can be used.
- Make sure the mounting plate is level by placing a spirit level on top of the plate.
- Mark the wall with a pencil through the screw holes.
- Drill 4 x 8mm (0.3 in) mounting holes and attach the mounting plate to the wall.

Diagram for mounting the diffuser



Mounting the Scent Point

1. Fix the bracket to the HVAC duct using metal thread screws (x4) to secure the bracket to the HVAC duct.
2. Once secure, use a 8.5mm / 9mm drill-piece and drill through the center of the bracket into the duct.
3. Insert the rod into the bracket and secure with screw. Note: Insert $\frac{3}{4}$ of the rod into the duct straight through any insulation that may be inside the duct. Depending on the size of the duct, Never insert the the rod to more than half the height of the duct.
4. Insert the Scent Output back tube into the rod, sealing it with duct tap.
5. To check if the fragrance is coming out of the rod, unscrew the screw that holds the rod in place. Remove and check, re-instert back in and secure to fix the rod into position.

Note: The Scent Point is not to be used with Flex Ducts, to connect a Flex Duct, simply use some duct tape and seal off the connection.

Installing the Scent Output tube

It is important that the Scent Output tube is straight, ensuring there are NO pockets or bends where the fragrance oil can build up. Maximum length 1.2m (4ft).

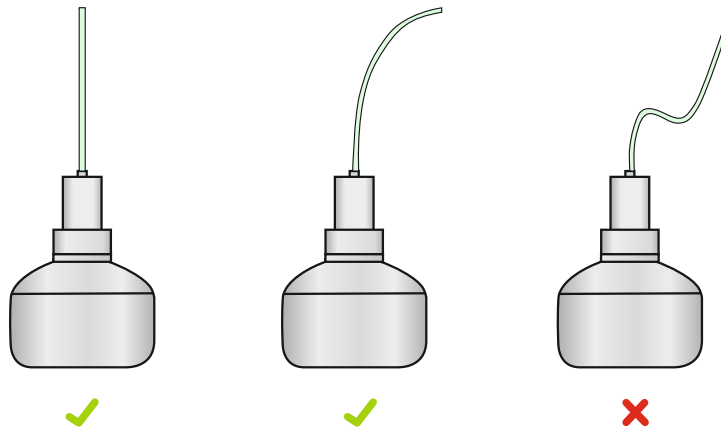
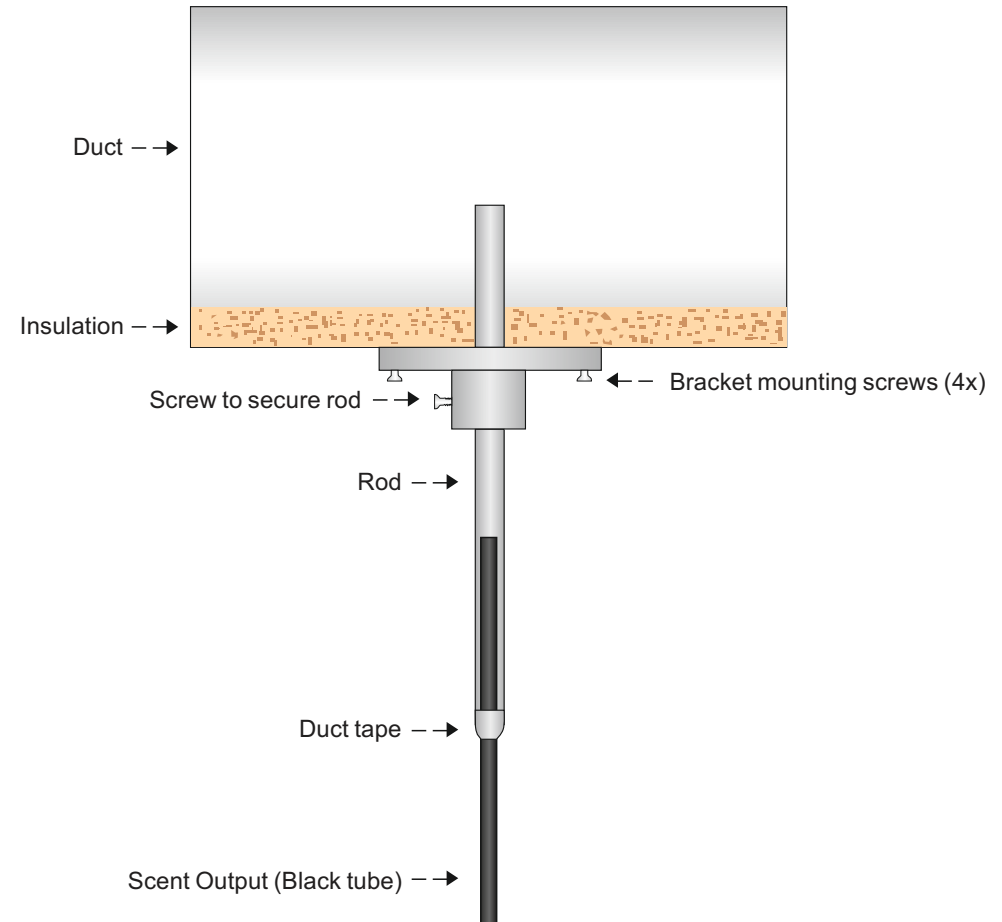
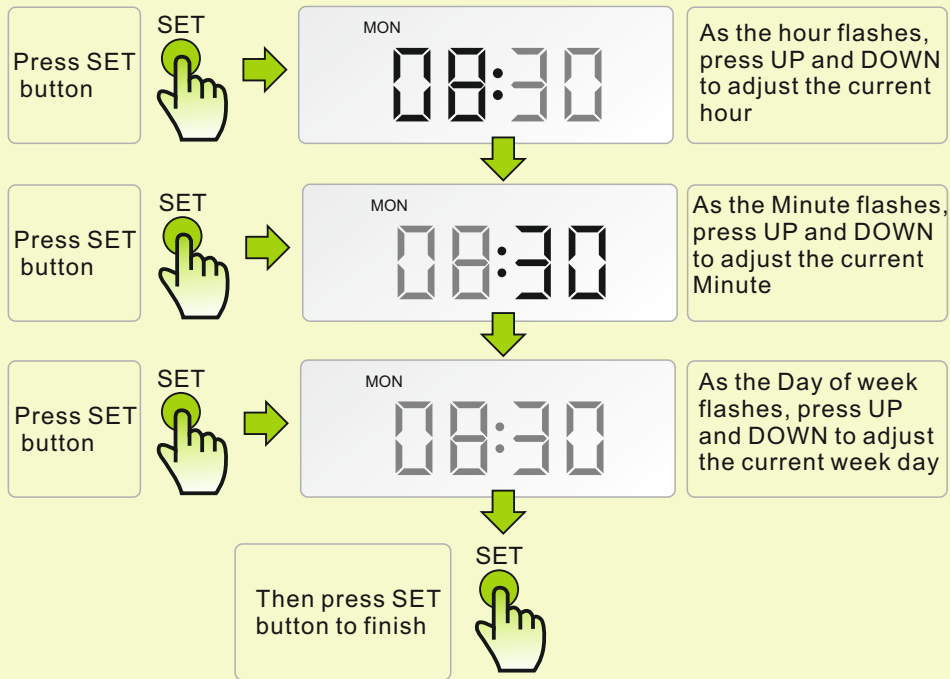


Diagram for mounting Scent Point (this is optional Accessory))

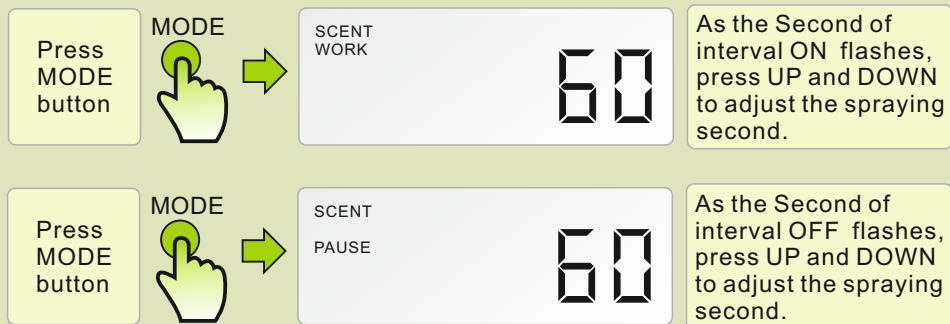


Note: There is often insulation inside the ducting system, please ensure the rod and black tube goes through the insulation. If the rod is not inserted all the way through the insulation, the scent will not enter the duct so no scent will be detectable in the desired area.

Set local time and week

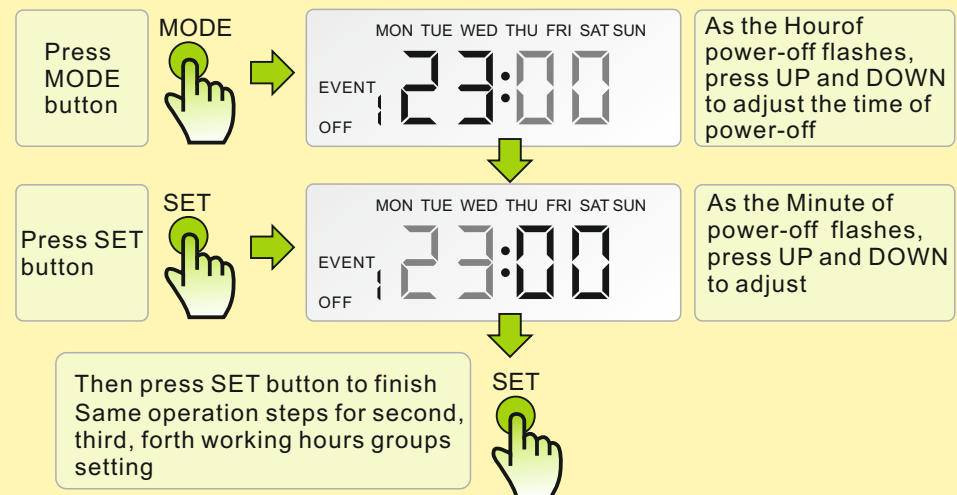
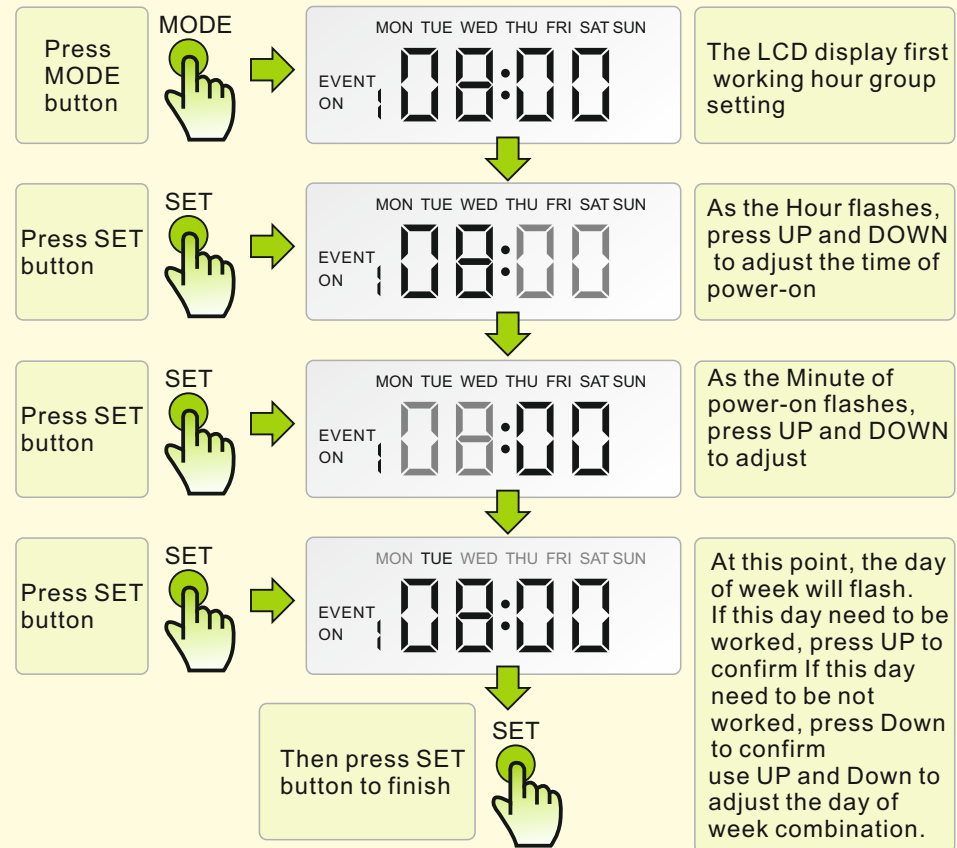


Set interval time



To finish the setting, press MODE , then the device will operate by the settings.

Set working hours groups



Maintenance and cleaning

The Diffusers can get blocked if the unit is not cleaned or not used for an extended period. The Diffuser can be cleaned with methylated spirits or alcohol; it should be cleaned every time that you change the fragrance bottle.

1. Fill an empty oil bottle with a small amount of denatured alcohol (methylated spirits) or ethanol and attach to the Diffuser.
2. Switch the unit on for about 30 seconds, then switch off for 15 seconds to let the methylated spirits or alcohol drain back into the bottle. Repeat this 3 times and the diffuser will be clean.

Diffuser Cleaning Pin(this is optional Accessory):

This System comes with a Diffuser Cleaning Pin to help unclog the diffuser and remove any oil built over time. The Diffuser Cleaning Pin should be used every three months or as needed if the Diffuser is not misting as intended.

1. Remove the connector elbow from the diffusers Air inlet. This may take a little force, we recommend using a flat screw driver or scissors and place between the diffuser and the elbow connector to create some leverages and push the elbow off the Air Inlet.
2. Insert the Diffuser Cleaning Pin all the way into Air inlet, then remove the Diffuser Cleaning Pin and repeat this a few times to ensure it is unclogged. Then store the Diffuser Cleaning Pin away for future use. Do not insert the Diffuser Cleaning Pin into the Scent output connector, this will cause damage to the diffuser.

Bottle Gasket (Washer):

1. Replace the gasket (washer) inside the diffuser every time your change over your fragrance bottle or drum. This ensures a closed seal and avoids the fragrance potentially leaking over time.

Note: Oil stains or fingerprints on the IL1000-5M or a Diffuser can be removed with a water dampened cloth. Wipe with Methylated Spirits if the mark persists. Keep all connectors and sockets dry. Do not use harsh or abrasive cleaning agents of solvents.

Diagram for removal of Elbow Connector

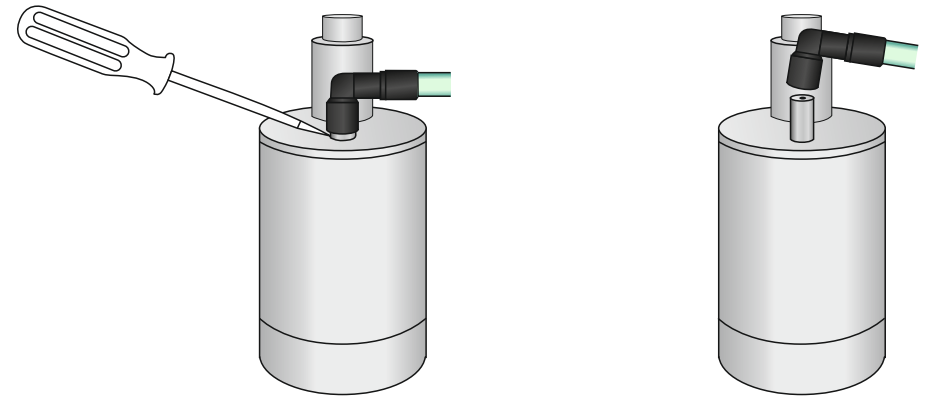
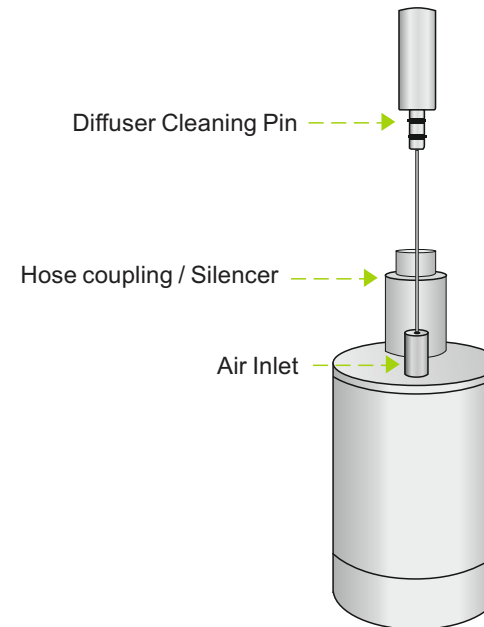


Diagram for Diffuser Cleaning Pin (Optional Accessory)



Troubleshooting

1. The IL1000-5M does not work.
 - a. Check that the power cable is connected and the power is switched on
 - b. Check that the On/Off switch has been switched On, The LED should light up when the pump runs.
 - c. Check if the power supply voltage is compatible with the unit.

Note: Electrical parts may only be repaired and replaced by an authorized service agent.

2. The Wall Diffuser does not diffuse oil (no misting)
 - a. Check if the fragrance bottle is attached and filled
 - b. Check if the air tube is flowing air by disconnecting the tube from the Wall Diffuser. If there is no airflow, and the IL1000-5M is running, the tube maybe bent at an angle which blocks air flow.
 - c. Check if the diffuser is blocked. Follow the instructions in the 'Cleaning and maintenance' section to clean and unblock the diffuser.
3. The fragrance bottle is leaking oil
 - a. Check if the bottle is screwed in straight.
 - b. Check if the bottle gasket (washer) is present between the bottle and the atomiser, the gasket (washer) may need replacing, please follow the instructions in the Maintenance and cleaning section.
 - c. Check the top of the bottle for unevenness or damage.
 - d. Check the thread of the bottle for damage caused by cross threading into the diffuser.

Optional accessories

Drum Bracket: Allows the drum to be wall mounted via a secure strap.

Cleaning Pin

Scent Point

Installing fragrance cartridges

The Diffuser can accept a 500ml (16 fl. oz.) bottle or a 2 liter (0.44 Gallon) Drum of fragrance oil, depending on the type of diffuser.

To install the fragrance cartridge:

1. Remove the plastic cap of the bottle.
2. Ensure that the base of the diffuser has its O-Ring seal in place and free of debris and obstruction
 1. Press Mode until a letter appears on screen (a, b, c, d, e, f)
 2. Move to letter 'd' using the Up and Down buttons
 3. Screw the bottle or drum into diffuser, making sure that the thread is lined up and screwed in straight. Do not force the bottle or drum onto the diffuser if the thread is not straight as this will damage the bottle or O-Ring and not create the required seal. Ensure that the bottle or drum is firmly seated on the diffuser.
 4. Once the fragrance is installed, make sure that the diffuser is kept vertical at all times, as fragrant oil may leak out through the diffuser if it is laid on its side.

Note: It is required to diffuse denatured alcohol or methylated spirits through the diffuser before inserting a new fragrance. We recommend to diffuse denatured alcohol or methylated spirits as a preventive maintenance procedure each time a new bottle is inserted or if the system is not going to be used for over one week.

Warranty

This system and parts come with a warranty against defects in workmanship from the date of purchase for a period of 12 months. If your product is found to be defective within the warranty period, under normal use and care, the after-sale service department will at its own discretion either repair the unit.

Proof of Purchase:

This warranty is valid for the original purchase and is not transferable. Please keep your purchase docket, tax invoice or receipt as your proof of purchase and as proof of date on which the purchase was made.

Extent of Warranty:

This warranty is limited to defects in workmanship or parts. All defective products or parts will be repaired or replaced.

Normal Wear and Tear:

The warranty does not cover normal wear and tear to the products or parts.

The warranty does not cover:

- Any defects caused by an accident, misuse, abuse, improper installation or operation, lack of reasonable care, unauthorised modification, loss of parts, tampering or attempted repair by a person not authorised by our company.
- Any product that has not been installed, operated or maintained in accordance with the instruction manual provided with the product.