

MBRACE

Lounge chair

Design by **Sebastian Herkner** | Item code: **085006** | Weight **7,5 kg/17 lbs** | Volume **0,71 m³/25 cu ft** | COM (Customer Own Material): **1,83 m/2.25 yd** (plain fabric only)

Measurements



107
42¼

35
8
13¾
3¼

84
33

78
30¾

cm
inch

Collection: MBRACE by Sebastian Herkner takes a joyfully unconventional approach to poolside furniture, bringing DEDON Fiber seating and a solid teak base together for the very first time. The result is an eye-catching, instantly likable collection for lounging, dining and more. MBRACE captures the spirit of barefoot luxury while extending the DEDON design language into new, more Nordic territory.

Characteristics: Friendly, engaging, embracing, innovative, exceptionally comfortable

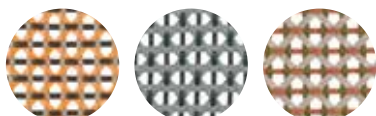
Lounge chair: This low-back lounge features a triaxial open-weave seat, a solid-teak base and a choice of comfortable cushions.

Material: The MBRACE seats are made of DEDON fiber woven over an aluminum frame. The base consists of premium teak.

Frame maintenance: Clean with a soft cloth or brush, warm water and a gentle cleanser, if needed. Wash the teak base using DEDON teak cleaner. To retain the golden-brown color of unweathered teak, we recommend applying DEDON teak oil at least once in every six months.

Cushion maintenance: While the covers cannot be removed, the complete cushions may be washed by hand at 30 °C / 86 °F.

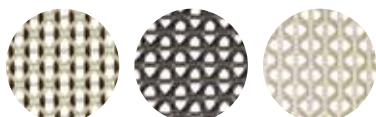
Fibers



142
seville

141
baltic

151
chestnut

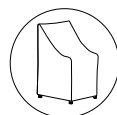


115
pepper

126
arabica

140
sea salt

Additional items



Cover

56085006000

Cushions

Cushion: **95085006 + fabric code**

B 110 T 115 H 8 cm

W 43¼" D 45¼" H 3¼"



Seat cushion: **95085016 + fabric code**

B 95 T 65 H 8 cm

W 37½" D 25½" H 3¼"

Fabrics

Items of this collection are available in all fabrics Cat. A, B, E & Cat. C (only Kvadrat® ATRIUM / PATIO).

Please see fabric options fact sheet

To learn more about DEDON, our collections and warranty policy, please visit our website –

dedon.de

10/22

DEDON