

# Zero Background Omni Topoisomerase Cloning Kit

-for cloning of both blunt end DNA fragments  
and fragments with 3'-A overhang

Rev. A. May. 1 2013

Cat. No.	Marker:	Size:
C5865-25	Amp <sup>R</sup>	25 reactions
C5865-50	Amp <sup>R</sup>	50 reactions
C5866-25	Kan <sup>R</sup>	25 reactions
C5866-50	Kan <sup>R</sup>	50 reactions

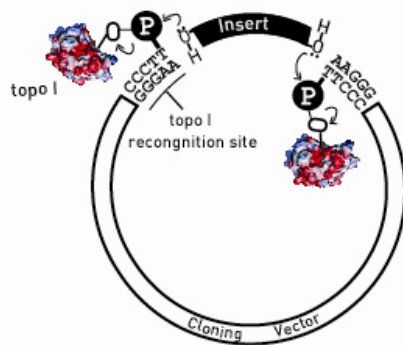
Store at -20°C

Note: Read and follow the instruction carefully to ensure optimal performance.

## Description:

Designed for equal efficient cloning of both blunt ended fragments and fragments with 3'-A overhang, the Zero Background Omni Topoisomerase Cloning Kit utilizes DNA strand transfer activity of Vaccinia virus DNA topoisomerase I for the quick cloning of DNA fragments up to 10 kb. Vaccinia virus DNA topoisomerase I forms a 3'-phosphoryl intermediate with the plasmid vector containing cleavage recognition motif of 5' CCCTT↓. Covalently bound topoisomerase I then transfer the incised vector DNA strand to the DNA fragment to be cloned with free 5'-OH terminuses (refer to the illustration below). This transferring reaction is rapid and reproducible. PCR fragments, synthetic DNA fragments as well as genomic DNA fragments obtained by mechanical shearing can all be effectively cloned. The cloning vector pCloneEZ-Omni-Amp/HC and pCloneEZ-Omni-Kan/HC included in this kit are high copy number plasmids engineered to tolerate mild toxic genes. For fast cloning of extremely toxic genes please chose our advanced CloneRanger Topoisomerase Kit.

Fig.1 Strand transfer catalyzed by vaccinia virus topoisomerase I



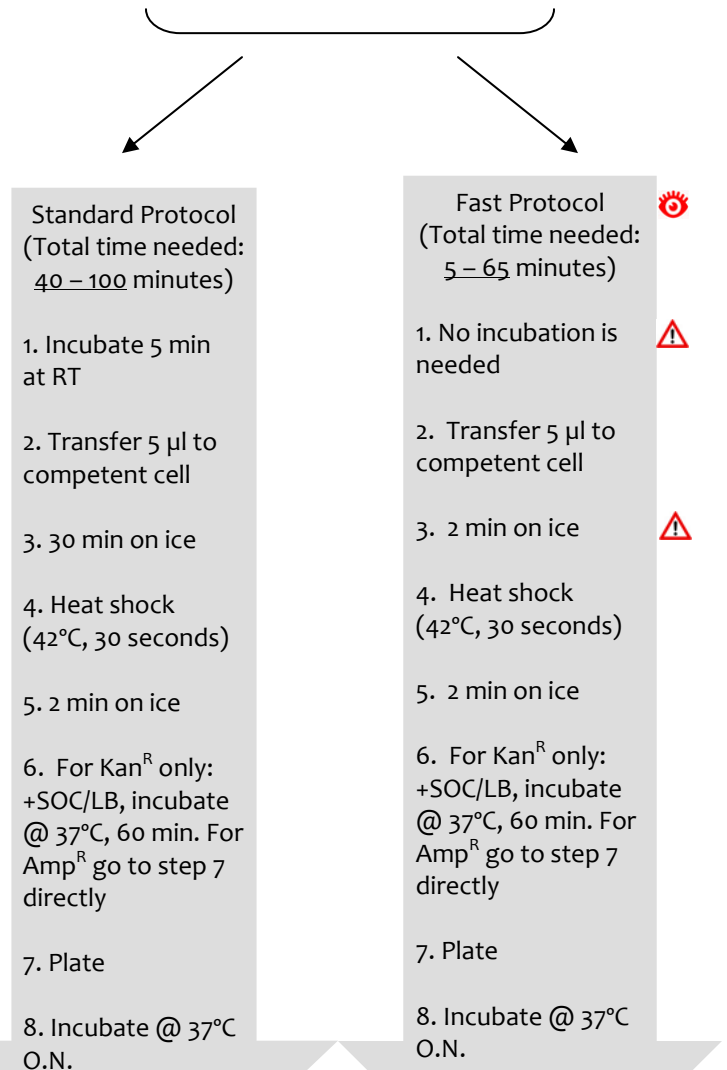
## Components:

Components	Kit Size	
	25 Rxns	50 Rxns
pCloneEZ-Omni-Amp/HC (or pCloneEZ-Omni-Kan/HC), (20ng/ul)	25 µl	50 µl
10X Enhancer	30 µl	60 µl
Control Insert lacZα (20ng/µl)	10 µl	10 µl
Blank Control Vector (100ng/µl)	20 µl	20 µl
M13F Sequencing Primer (10pmol)	100 µl	100 µl
M13R Sequencing Primer (10pmol)	100 µl	100 µl

## Protocol:

**Brief Summary** (for first time user please refer to the detailed protocol below)

Mix: Vector + Fragment + Enhancer+ H2O = 10 ul



## Detailed Protocol

**⚠** First time users should carefully read through this protocol before starting the experiment.

1. Set up the topoisomerase cloning reaction by mixing the reagents in the order shown

Reagent	Volume
DNA Fragment	0.5–8 $\mu$ L
pCloneEZ-Omni-Amp/HC (or pCloneEZ-Omni-Kan/HC)	1 $\mu$ L
10X Enhancer	1 $\mu$ L
diH2O	X $\mu$ L

**Final Volume 10  $\mu$ L**

**👁** DNA fragments **MUST NOT** be 5' phosphorylated. Blunt ended DNA fragment as well as fragment with 3'- adenosine overhang can both be effectively cloned. This single kit can be used for cloning of PCR fragments generated by KOD, Pfu, Phusion as well as Taq DNA polymerase. 20–200 ng of DNA fragments ranging from 100 bp to 5000 bp has been tested to give satisfactory results. Excess amount of DNA inserts e.g. >300ng, will reduce cloning efficiency. Refer to the following table.

Table 1. Suggested optimal amount of fragment with various sizes:

Fragment size (bp)	Optimal amount (ng)
100–1000	20–50
1000–2000	50–100
2000–5000	100–200

A control reaction using 1  $\mu$ L lacZa fragment as insert can be included to evaluate the cloning efficiency. The control reaction should generate better than 98% blue colonies when transformed into DH5 or DH 10B and plated on X-gal and IPTG containing plates.

\* Store all reagents at  $-20^{\circ}\text{C}$  when finished.

2. Mix the reaction gently and incubate for **5 minutes** at temperatures between  $22\text{--}30^{\circ}\text{C}$ . Or go to step #3 directly without incubation.

**👁** Recent R&D data indicate incubation at this step produce no detectable benefits as evident in the following data. In any case, do not let the incubation go beyond 5 minutes. Extended incubation for larger inserts up to 5 kb is unnecessary and may introduce background.

Table 2. Effects of incubation of reaction mixture vs. no incubation and instant transformation (with 1 hour recovery):

Fragment Size (bp)	Total Number of Transformants	
	Incubate 5 min, 25C	No Incubation
600	> 3000 colonies	> 3000 colonies
2000	ca. 300	ca. 500
3000	ca. 250	ca. 400
5000	ca. 100	ca. 100

3. Add 5  $\mu$ L of the cloning reaction into 50  $\mu$ L chemically competent E. coli and mix gently. Do not mix by pipetting up and down.

**👁** If not used for transformation immediately, reaction mixture can be stored at  $-20^{\circ}\text{C}$  until use. Prolonged storage of the reaction mixture is **NOT** recommended.

4. Incubate on ice for 2–30 minutes.

**👁** Longer incubation on ice affects overall transformation efficiency to limited extent. The length of the incubation is at the user's discretion.

Table 3. Effects of incubation on ice on the total number of resulting transformants (with 1 hour recovery):

Fragment Size (bp)	Total Number of Transformants	
	30 min. Incubation	2 min. Incubation
600	>4000 colonies	>3000 colonies
2000	1346	913
3000	610	540
5000	289	241

5. Heat-shock the cells for 30 seconds at  $42^{\circ}\text{C}$  without shaking.

6. Immediately transfer the tubes to ice and incubate for 2 minutes.

7. For pCloneEZ-Omni-Amp/HC related cloning, immediately spread all from each transformation on a prewarmed plate containing ampicillin and incubate overnight at  $37^{\circ}\text{C}$ . **⚠** For pCloneEZ-OMNI-Kan/HC related cloning, a mandatory incubation with LB, SOC or 2xYT medium for at least 60 minutes at  $37^{\circ}\text{C}$  has to be performed before plating onto pre-warmed kanamycin containing LB plates an incubate at  $37^{\circ}\text{C}$  overnight.

**👁** For fragments larger than 2kb, 1 hr recovery in rich media, even for pCloneEZ-OMNI-Amp/HC related cloning, will dramatically increase the number of transformants. It is to the user's discretion whether recovery is needed based on individual purpose.

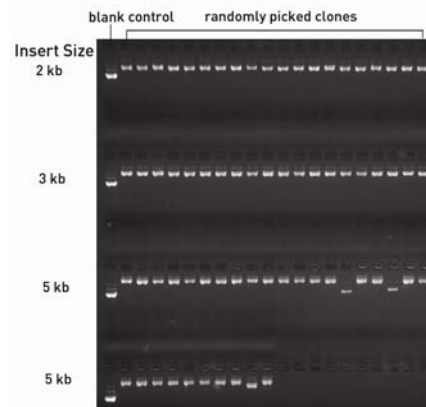
Table 4. Effects of 1 hour recovery after heat shock on total number of transformants:

Fragment Size (bp)	Total Number of Transformants	
	w/ 1 hr recovery in 2xYT medium	w/o recovery
600	>3000 colonies	>1000 colonies
2000	778	133
3000	627	68
5000	242	18

8. An efficient topoisomerase cloning reaction will produce hundred colonies. Pick ~10 colonies for analysis.

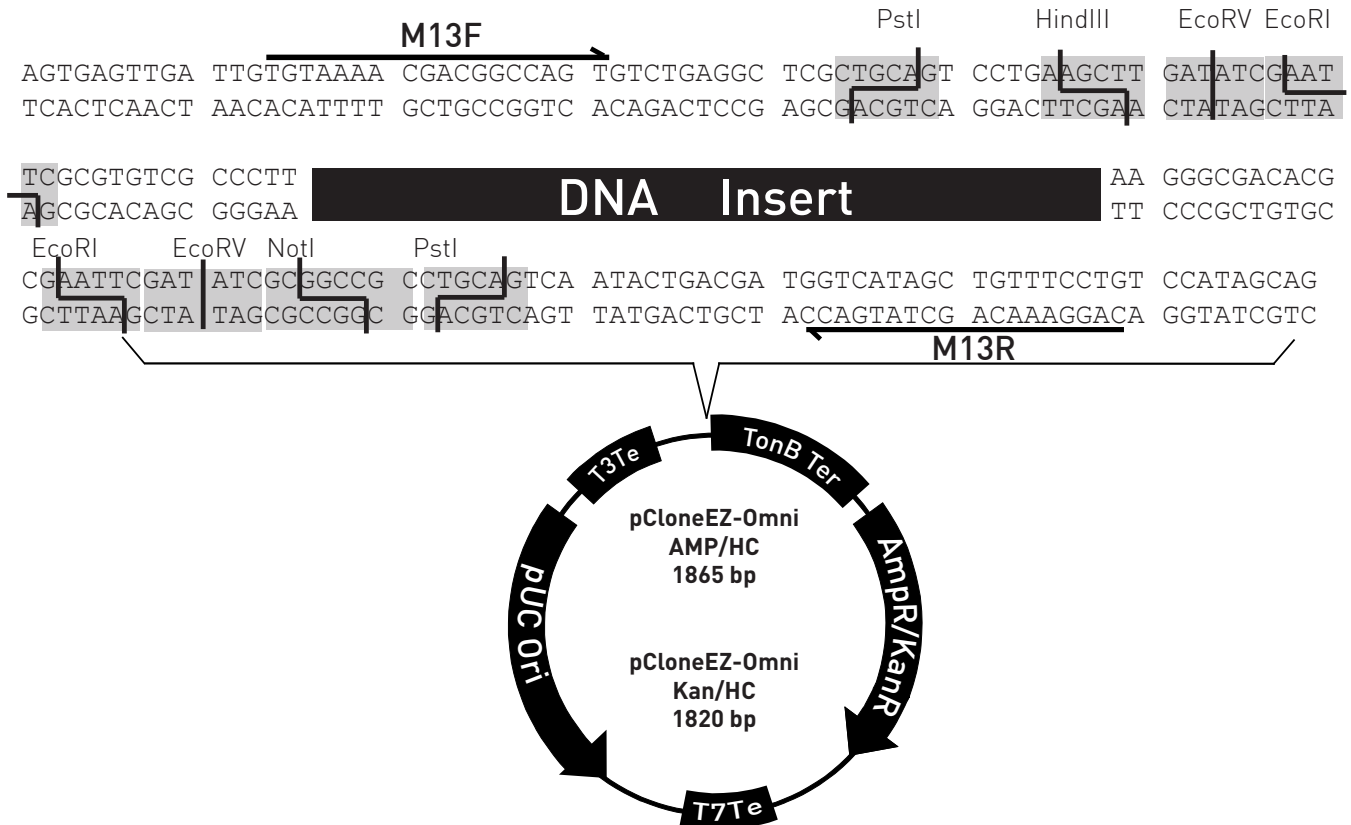
9. The included blank control vector is the recircularized pCloneEZ-OMNI vector without any insert. Therefore, it can be used as a size control during gel electrophoresis to identify recombinant plasmids containing inserts of interest.

Typical cloning results of PCR fragments with various sizes:



## Appendix: Vector information

pCloneEZ-Omni-Amp/HC and pCloneEZ-Omni-Kan/HC are high copy number plasmids for rapid cloning of DNA fragments generated or polished by both proof reading thermo polymerases such as Pfu, KOD and Phusion etc. and non-proof reading DNA polymerase such as Taq. Both vectors tolerate mild toxic genes.



### pCloneEZ-Omni-Amp/HC Features:

TonB terminator:	167-198 bp
Beta-lactamase (AmpR):	302-1162 bp
T7Te terminator:	1186-1213 bp
pUC replication origin:	1225-1812 bp
T3Te terminator:	1834-1863 bp
M13F sequencing primer:	13-29 bp
M13R sequencing primer:	138-154 bp

### pCloneEZ-Omni-Kan/HC Features:

TonB terminator:	167-198 bp
KanR:	302-1117 bp
T7Te terminator:	1141-1168 bp
pUC replication origin:	1180-1767 bp
T3Te terminator:	1789-1818 bp
M13F sequencing primer:	13-29 bp
M13R sequencing primer:	138-154 bp

### Sequencing Primers

M13F:  
TGTA AACGACGGCCAGT

M13R:  
CAGGAAACAGCTATGACC