

HELVANA

BROW

TRAINING MANUAL

SHOPBEEPAMPERED.COM

**STAY UP TO DATE WITH THE LATEST BEE  
PAMPERED PRODUCTS AND NEWS,  
FOLLOW US AT @BEEPAMPERED  
TAG US IN YOUR PICS SO WE CAN  
RE-SHARE YOUR AMAZING RESULTS AND HELP  
PROMOTE YOUR STUDIO!**

# TABLE OF CONTENTS

PAGE 1: WELCOME TO HENNA BEE

PAGE 2: HENNA BEE KEY INGREDIENTS

PAGE 3: HOW HENNA WORKS

PAGE 4: HENNA BEE COLORS

PAGE 5: SHAPING THE BROWS

PAGE 6: HENNA BEE APPLICATION

PAGE 7: HOW TO APPLY HENNA BEE

PAGE 8: EARN YOUR HENNA BEE CERTIFICATION

PAGE 9: MONETIZING YOUR SERVICE



# Welcome

## hello

Thank you so much for your purchase and the support you are showing our female lead company! Bee Pampered Professional started in 2018 when I came up with the idea for Henna Bee!

I started using a different henna line in my studio; in time, I found that it was full of harmful ingredients! However, because it was from a foreign country, the ingredients were not listed on the product correctly. I couldn't find a Canadian/American company that supplied henna brows, so I decided to start my own! I set out to create the most natural product that I could. How hard could it be, right? Well, it took close to a year of back and forth with my contact in India to finalize the formula for Henna Bee!

I am so in love with this line I have created, and I stand behind it 100%! I am incredibly excited that you have chosen to join our team! If you have not already become a part of our private Facebook group, "The Bee Hive - Bee Pampered Support Group," I strongly urge you to head over and join now! We can help you get started with tips and tricks and support your Henna Bee journey!

Feel free to follow us on Instagram @beepampered for everything Bee Pampered or email me directly at [hello@beepampered.ca](mailto:hello@beepampered.ca) if you have any questions!

Sincerely Adelle,



1



**ADELLE YOUNG,**  
**BEE PAMPERED**  
**Founder/CEO**



# KEY INGREDIENTS

## LEWSONIA INERMIS (HENNA)

Flowering plant sourced to dye skin, hair and fingernails naturally red in color.

## CASSIA OBOVATA (SENNWA ITALICA) "Natural henna"

Yellow in color, it coats the hair so that it appears glossy and thick for several weeks.

## INDIGOFERA TINCTORIA (TURE INDIGO)

Naturally blue in color made by soaking and fermenting its leaves.

## EMBLICA OFFICINALIS (INDIAN GOOSEBERRY)

Stimulates hair growth and used as a MORDANT to set the dye (drying agent).

## ACACIA CONCINNA

A medicinal plant used as shampoo, creates lather.

## CITRIC ACID

Used as an acidifier to activate the henna.

For years, I have been looking for and testing eyebrow tinting solutions. Many times the products I find contain harsh chemicals which may cause damage to eyebrows and don't produce the most outstanding results.

The latest trend in eyebrow tinting, henna, provides clients a natural alternative to chemical tints. However, through my research, I found that many products either contained very little henna or still required chemicals to activate.

Through my frustration with available products, I created Henna Bee, a proprietary vegan formula made with 75% plant-based ingredients. Henna Bee contains no ammonia, no lead and requires no chemicals or oxidants to activate, only hot water. It is safe and easy for spa professionals to use. Clients will love their eyebrow transformations, and you can feel confident knowing you are using natural, plant-based ingredients.

Please see the back of your Henna Bee starter kit/bundle for a complete list of ingredients.

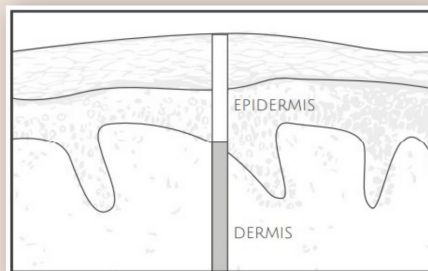


# WHAT IS HENNA & HOW DOES IT WORK?

Henna is a flowering plant that has been used since ancient times to dye skin, hair, and fingernails. The henna plant produces a dye called Lawson found in the plant's leaves. The leaves are harvested, dried, and ground into a fine powder. When mixed with hot water and applied topically, the dye molecules in the paste bind to the proteins in the top layer of the skin called the epidermis. One of the key benefits of Henna Bee is the staining of the skin underneath the eyebrow providing a fuller eyebrow appearance, an alternative to microblading. Typically the skin will remain stained for up to 1-2 weeks; however, clients with oily skin may not hold on to the colour as long as clients with a drier complexion simply because their epidermis will not hold on to the colour for as long. Henna Bee will remain on the eyebrow hair for up to 6 weeks.

Most products on the market have added Paraphenylenediamine (PPD) to enhance the staining ability of their henna. PPD can be pretty harmful in large amounts, creating reactions on the skin immediately or causing a reaction to develop over time.

Henna Bee by Bee Pampered has been created with the least amount of PPD possible, resulting in a softer, more natural appearance. Ideal for the everyday client! We as professionals have to remember that just because something looks cool on social media doesn't mean it looks good in real life! Henna Bee, when used correctly, will give off a soft look your clients will thank you for!



# HENNA BEE COLORS

We have created 6 Henna Bee colours that can mix together to create the perfect colour for your client. Choosing a colour for your client can take a bit of trial and error until you get used to all of the Henna Bee colours. We recommend doing some colour-testing practices before performing Henna Bee on your clients. Your arms and legs can be an excellent place for a swatch test as you get comfortable with the colours.

Make sure to keep a client record of what colours you used and how long you let it activate. That way, you will know if you need to adjust it next time. We also suggest taking before and after pictures so you can remember each client's results.

## HENNA BEE COLOR CHART:

Here is a list of all 6 Henna Bee colours with tips for which colours work best for different complexions and hair colours.

1. Light/Warm: Fair complexion, red hair or strawberry blonde
2. Light/Cool: Mix with other colours to lighten and customize
3. Medium/Warm: A warmer tone for lighter skin
4. Medium/Cool: Dirty blonde or brown hair
5. Dark/Warm: Brunettes
6. Dark/Cool: Black hair



For examples of different applications of Henna Bee on different skin types please visit our Instagram page: [@beepampered](#)



# SHAPING

Everybody has a unique eyebrow/face shape. Our biggest tip with Henna Bee is to follow close to your client's natural brow line and use your artistic eye to create a brow shape that suits your client most.

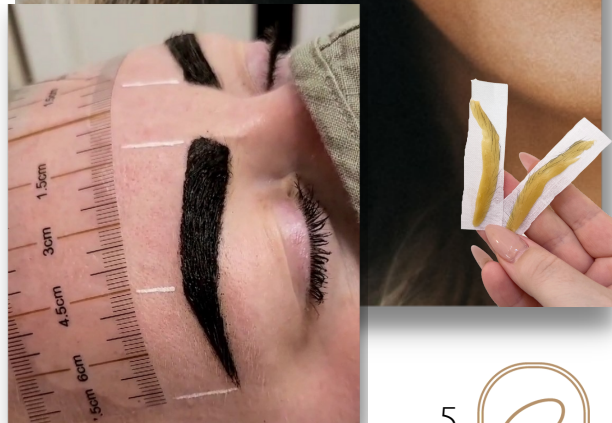
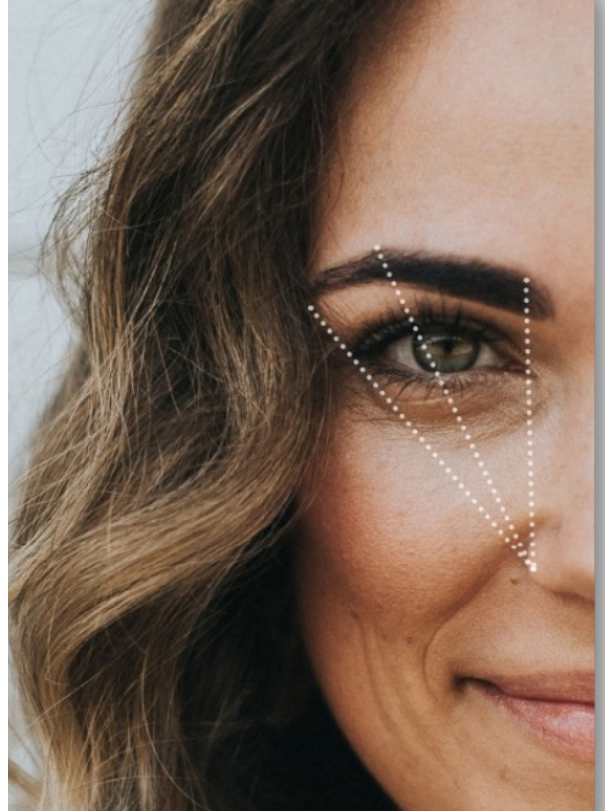
Use this chart as only a guide and not a rule!

Some clients may have very dense hair in a unique shape, and applying the henna too far off their natural line can cause an unnatural/odd look. We are not using permanent makeup to correct or create a new shape; we are simply enhancing what our clients already have.

## **EYEBROW SHAPING GUIDE:**

Place your brow ruler along the forehead horizontally above the eyebrows. Taking a straight object such as a pencil, create an imaginary line from the side of the nose to the inner corner of the eye; this is where you want to start the head of the brow. Using the same concept, create a line from the side of the nose to the edge of the pupil or iris, and you'll have an idea of where to arch the brow. Going from the side of the nose to the outer corner of the eye will give you the ending point for the tail. Mark one eyebrow starting points using a brow pencil and match the other eyebrow using the brow ruler as a guide.

Again this isn't a "set in stone" starting point, more of a guideline. If you need to unbalance the brows to give a more natural look, by all means, do so. If you try too hard to give your clients symmetrical brows when their faces are not symmetrical themselves, it can provide a crooked look to the rest of their face.



# APPLICATION

On the following pages, you will find a detailed step-by-step breakdown of how to apply Henna Bee. To see a Henna Bee application video, please visit our website [www.shopbeepampered.com](http://www.shopbeepampered.com) and search for our free training section.

## BEFORE YOU GET STARTED::

Do not perform Henna Bee service on clients who have:

- Broken skin on the surface of the skin in the affected area.
- Any skin disorders that appear on the eyebrow area.
- G6PD DEFICIENCY is a rare disorder (allergy to aspirin or fava bean)
- Seborrheic dermatitis: Symptoms may range from dry flakes (dandruff) to yellow, greasy scales with reddened skin and white or yellowish crusty flakes. Other symptoms include itching and burning. Pink-coloured patches are most prominent in people with dark skin.
- Anyone who has had a previous reaction to any hair dyes or tints in the past

We highly recommend doing a patch test for clients with skin sensitivities or other concerns.

**PATCH TEST:** Have the client come in 24 hours before their appointment to test a small spot behind the back of the ear. Leave Henna Bee on the skin for 20 min. Remove with warm water and have them monitor any reactions. As long as there is no irritation, they are good to have the service done.

For aftercare support, please advise clients to:

- Avoid swimming, saunas, hot baths or showers for 24 hrs after application
- Avoid oil-based products such as foundations and cleansers.
- Avoid rubbing, touching and exfoliating the area as it will increase the fading process.



# HENNA STEPS

1. Snap a before picture of your client.
2. Have a clean and sanitized work environment. Wash your hands, put on a face mask and clean your surfaces and tools using 70% alcohol. Be conscious of touching your face and other surfaces while executing the treatment to avoid cross-contamination.
3. Using a cotton pad and the Bee Pampered silicone exfoliating brush, cleanse the eyebrow area using Bee Pampered Oil-Free Cleanser. Dry skin flakes will give a patchy result.
4. Choose the Henna Bee colour you will be using. If mixing 2 colours, mix very well before adding hot water. Scoop a pea-size amount of henna into the dappen dish.
5. Using your dropper, add hot water (the heat helps activate Henna Bee) to your Henna Bee and mix with your brush until you get a smooth, creamy mixture. The key is to find the right consistency, not too runny that the henna won't stay in place, but not too thick and chalky that it won't stick to the skin.
6. Using your brush, start applying the mixture from the head of the brow to the tail in one fluid motion. Repeat until the brow area is evenly covered. Use a Q-tip with warm water to clean the edges of the brows for clean lines.
7. Set your timer for 5 min and apply Henna Bee to the other eyebrow.
8. After 5 min remove approx. ½ cm on the head of the brow to create a faded look. Start by setting the timer for another 10 min. Henna Bee will last longer the longer it is left on during the treatment.  
\*The ideal time to have Henna Bee on the skin during treatment will be 15-20 min total.
9. Remove Henna Bee by using warm water and disposable cotton. Wear gloves to protect from staining your hands. If Henna Bee has become dry, you can pre-wet it with a damp Q-tip right before removal to make for less rubbing on the skin.
10. Snap an after picture of your client and share your results with us on Instagram @beepampered #beepampered If you are increasing the value of the service by adding an eyebrow hair removal such as waxing or threading, now is the time to do so.

DO NOT PERFORM A HAIR REMOVAL SERVICE BEFORE HENNA BEE AS IT MIGHT CAUSE IRRITATION.







# CERTIFICATION

To receive your official Henna Bee certification, please go to the Free Training section of our website, [www.shopbeepampered.com](http://www.shopbeepampered.com) and enter the access code found in your starter kit or bundle. Once inside, look for “Henna Bee Certification,” where you will be prompted to submit an exam and samples of your work. The Bee Pampered team will review your answers and examples of your work and get back to you regarding approval.

## WHEN YOU ARE OFFICIALLY HENNA BEE CERTIFIED YOU WILL RECEIVE:

- An official Henna Bee online certificate
- Recognition on our Henna Bee artist locator

Thank you again for being a part of the Bee Pampered team and joining the Bee Hive!

8



# MONETIZING YOUR SERVICE

Henna Bee is a non-invasive, non-permanent service you can offer to almost everyone. It's an excellent solution for clients who may be uncertain about permanent makeup but still want full natural-looking brows.

We recommend offering the Henna Bee treatment as a 30 minute service at a minimum of \$35. Each bottle of Henna Bee provides approximately 30 applications that could generate over \$1,000 in revenue in every 3.5g bottle.

To increase the value of the service and provide your clients with a complete eyebrow transformation, we suggest pairing the service with Bee Pampered Eyebrow Lamination and/or a hair removal service such as waxing or threading. Plan your schedule accordingly to ensure you have enough time to complete the service and set up your next client without rushing.







# DISCLAIMER

## PERFORMING HENNA BEE:

Always perform Henna Bee BEFORE hair removal. To watch a Henna Bee service, visit [ShopBeePampered.com](http://ShopBeePampered.com) for our Henna Bee training video.

It is important to note that this manual reviews using only Bee Pampered products. You can easily damage a client's hair and skin if you do not follow the manufacturer's instructions - all products on the market are different. Bee Pampered is not responsible for executing any training you have received. Bee Pampered is to be performed by Professionals only.

## INSURANCE:

Do not perform any procedures you are not adequately insured for - insurance is there to protect you. Contact your insurance agent before treating any clients.

## LOCAL HEALTH APPROVAL:

Contact your local health authority to let them know that you've added a new service. You should be familiar and compliant with the guidelines for personal service establishments in your jurisdiction.

Courses available by Bee Pampered:

Bee Pampered Lash Lift + Tint, Bee Pampered Eyebrow Lamination, Bee Pampered Henna Eyebrow Tint



HAVE ANY QUESTIONS, PLEASE GET IN TOUCH:

BEE PAMPERED

PO Box 803, Langley BC, V1M 2S2, Canada

[hive@beepampered.ca](mailto:hive@beepampered.ca)

[www.shopbeepampered.com](http://www.shopbeepampered.com)

[@beepampered](https://www.instagram.com/beepampered)

Registered with Health Canada:  
#3318547 #3402529