

# NIXON OFFICE



**EQ3**

# NIXON – OFFICE

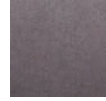
## DESCRIPTION

Practical and comfortable, the Nixon chair is upholstered in either a fabric, or synthetic leather, and sits on a 360-degree swivel base with castors. Curved to support the body while seated, the padded upholstered shell includes a removable seat cushion. With a neutral colour palette and black-metal base, the Nixon chair looks at home in the dining room or office.

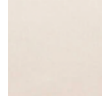
## FAQ

- Fabric options: dark grey and beige.
- Synthetic leather options: grey and brown.
- Assembly required.

## FABRIC OPTIONS



DARK GREY

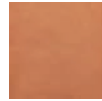


BEIGE

## PU LEATHER OPTIONS



GREY



BROWN

## SHIPPING

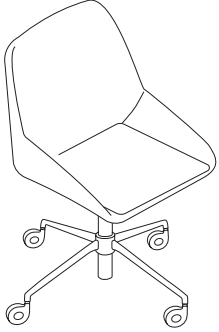
In-stock EQ3 accessories will be delivered in 5-7 business days, using our shipping partner(s). Please note that FedEx delivers Monday to Friday during regular business hours (usually between 9AM-5PM local time).

## WARRANTY

One (1) year warranty against material and workmanship's defects. View complete EQ3 Casegoods Warranty.

# NIXON – OFFICE

## OFFICE CHAIR



### SHELL

21.5" w × 23.75" d × 16.375" h  
Dark Grey Fabric 3020-410-25-A  
Light Beige Fabric 3020-410-45-A  
Brown PU Leather 3020-411-32-A  
Grey PU Leather 3020-411-35-A

### BASE

18.875" w × 18.875" d × 15.625" h  
3020-400-4-B

# OFFICE CHAIR

