



Instructions for use

English

Aurora Aerial Silks

Description: The Orbsoul Aurora aerial silks are made from premium grade 100% Nylon in 40 Denier Tricot.

Intended Use: This silk is used for aerial silks (aerial silks, aerial yoga, and aerial Pilates etc.)

Warning!

Activities involving the use of this equipment are inherently dangerous. Risks include, but are not limited to, asphyxiation, strangulation and death. You are responsible for your own actions and decisions. Orbsoul is not responsible for any direct, indirect or accidental consequences or damage resulting from the use of our products.

Limitations On Use: This product must not be pushed beyond its limits, nor be used for any purpose other than that for which it is designed.

Emergency Situation: You must have a rescue plan in place and the capability to execute it quickly during use in case of difficulties encountered with this equipment. Warning: Inert suspension in a knot can swiftly escalate into a life-threatening emergency situation.

Contact

Visit our website for more info and updates on your equipment.

17 Artisans Crescent
London, ON. N5V 3Y3
Canada

 orbsoul.com

 support@orbsoul.com

Before using this equipment, you must:

- Read & understand all instructions for use
- Get specific training on it's proper use
- Know it's capabilities and limitations
- Not use around electrical hazards or near sharp edges/abrasive surfaces.
- Understand & accept the risks involved

Breaking Strength Single Strand (MBS)	1200 kg (2600 lbs)
Breaking Strength Double Strand (MBS)	2400 kg (5200 lbs)
Length	5m (5.5 yards)
Width	2.8m 110 inches)
Weight	1.5 kg (3.5 lbs)
Testing	PN-EN ISO 13934-1

Fabric Strength Testing:

Our fabric is tested under the **PN-EN ISO 13934-1** standard test. Results determine the ultimate weight capacity to be 1200 kg per single strand. Please note: this fabric is break tested after dyeing. Dyeing silks without testing is dangerous as it changes the chemical structure integrity of silks, weakening it up to 15%. It is important to use tested after dyed fabric only to know the true working strength.

Safe Working Load Limit (WLL). Not to be exceeded.

Aerial Silks (higher dynamic energy)

- Working Load Limit (WLL): 170 kg (375 lbs)
- Factor of Safety (FoS): 7:1

FoS deciding reason: Max force generated by an aerialist is 7x their body weight.

Aerial Yoga & Pilates (lower dynamic energy)

- Working Load Limit (WLL): 240 kg (530 lbs)
- Factor of Safety (FoS): 5:1

Inspection Procedure

The integrity of this equipment is essential to your safety. Regular periodic examinations are required as safety of use depends on the continued efficiency and durability of the equipment.

Before & After Use

Known product history

- Any fabric showing unexpected degradation should be quarantined, pending a detailed inspection.
- The user should: Provide precise information on the usage conditions.
- History of any exceptional event regarding his fabric. (Examples: major loads, falls, use or storage at extreme temperatures, modification outside manufacturer's facilities, etc.).

Condition and Function of Equipment:

- The point on your silk taking the most strain is the knot on top. Undo the knot regularly and inspect it.

During Use

Regularly inspect and monitor your system, confirming proper connections, equipment position, fully locked connectors, etc.

Instructions for Use

These instructions explain how to correctly use your equipment. Only certain techniques and uses are described.

The warning symbols inform you of some potential dangers related to the use of your equipment, but it does not describe them all.

You are responsible for heeding each warning and using your equipment correctly. Any misuse of this equipment may create additional dangers. Contact Orbsoul if you need more clarification on instructions. This product is intended for use by medically fit, specifically trained and experienced users. Keep the Instructions for Use filed for reference. Make sure the markings are legible on the product.

Warning: An exceptional event can lead you to retire a product after only one use, depending on the type and intensity of usage and the environment of usage. (eg. Extreme temp, trailing over sharp edges, exposure to chemicals, pendulum falls etc.)

Retire from service and destroy if the equipment:

1. Has been subjected to a major fall or load
2. Usage history is not known
3. You have any doubt as to its reliability
4. Is misused, altered, damaged, exposed to harmful chemicals, etc.
5. Does not pass inspection
6. Shows flaws such as snagging, tearing, or friction burn

Do not return to service until the unit in question has been inspected and approved for use in writing by an authorized party. Consult with manufacturer if you have any doubts or concerns.

Detailed Inspection:

In addition to inspection before, during and after each use, a detailed inspection by a competent inspector must be done at least every 6 months or more depending on amount and type of use. Maintain clear records of usage instructions, history, and inspections. Assign new gear as a personal item to each user for complete history knowledge. If resold outside the original destination country, the reseller must provide usage, maintenance, examination, and repair instructions in the local language.

Washing & Storage:

- Use regular detergent for washing. Do NOT use bleach, vinegar, hydrogen peroxide, or other chemicals.
- Machine wash friendly: wash on gentle & cold with front load washer (note: if using top load washing machine, place silks in mesh laundry bag to avoid tangles and snags)
- Tumble dry on low in dryer or air dry
- Store in a cool, dry space, away from direct sunlight.

Documentation

Documentation	
Product model name	
Supplier contact info	
Purchase date	
Date of first use	

Warning: Repairs, modifications or additions to equipment should not be made without the manufacturer's prior written consent. Any repair shall only be carried out in accordance with the manufacturer's procedures.

Inspection History

Inspection Date	Examination Details	Inspector Name	Next inspection Date

Orbsoul 3-year guarantee

If your Orbsoul product has a defect due to workmanship or materials please contact us for full warranty service. This warranty does not cover damages caused by improper care, use, alterations and modifications, accidental damage or the natural breakdown of material over extended use and time.



Instructions for use English

Screw-Lock Carabiner

CE 0082 EN362:2004/B

Description: The Orbsoul Screw-lock carabiner frame pieces are constructed with high strength stainless-steel and alloy steel with the nut made from aluminum.

Intended Use: This PPE is used to connect two or more pieces of equipment together. It can be used in Personal Fall Arrest Systems (PFAS), work positioning, restraint and rescue systems. It can also be used for aerial arts.

Warning!

Activities involving the use of this equipment are inherently dangerous. You are responsible for your own actions and decisions.

Orbsoul is not responsible for any direct, indirect or accidental consequences or damage resulting from the use of our products.

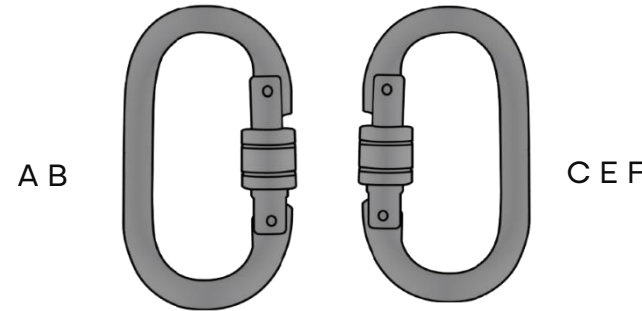
Non-Locking Carabiner Warning Gate must be fully closed. Guard against any object opening the gate. Position carabiner carefully and check frequently.





Limitations On Use: This product must not be pushed beyond its limits, nor be used for any purpose other than that for which it is designed.

Emergency Situation: You must have a rescue plan in place and the capability to execute it quickly during use in case of difficulties encountered with this equipment. Warning: Inert suspension in a harness can swiftly escalate into a life-threatening emergency situation.

Before using this equipment, you must:

- Read & understand all instructions for use
- Get specific training on it's proper use
- Know it's capabilities and limitations
- Not use around electrical hazards or near sharp edges/abrasive surfaces.
- Understand & accept the risks involved



Breaking Strength (MBS)		25kN
Breaking Strength (MBS)		9kN
Open Strength (MBS)		9kN
Gate Opening		18mm (0.7")
Length		108mm (4.3")
Width		58mm (2.3")
Weight		191gm (6.7 oz)
Certification		CE

Traceability and Markings

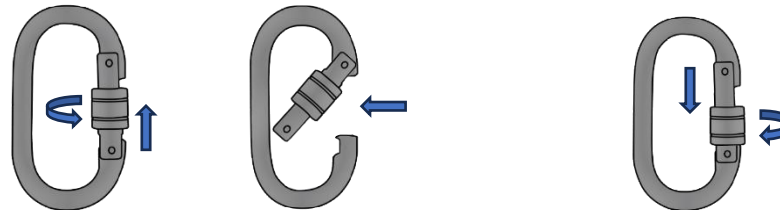
- Orbsoul
- Strength Rating (kN, lbs)
- CE (regulation 2016/425)
- 0082**

Apave Exploitation France SAS-6
Rue du Général Audran 92412 Courbevoie cedex-
France RCS Nanterre 903 869 618

- Read User Manual

How to Use & Mandatory Carabiner Locking Procedure

Serious accidents have resulted from unlocked carabiners. Debris, fabric, etc. can jam a sleeve. Always confirm complete locking! You must understand how the sleeve works and know what locked and unlocked looks like. Do not allow fabric or objects to rub/twist the sleeve because this could unlock it. Vibration can also unlock a sleeve so please screw the sleeve down into locking position can mitigate risk. Regularly check that carabiner is locked and positioned properly and double check if anything unusual occurs. Sleeves must be locked to achieve full strength.



Unlock: Twist sleeve moving up to unlock. Then, press gate to open and connect to other components.

Lock: Release gate to spring back into closed position. Twist sleeve downwards until tightened and fully locked.

Confirm locking: Visually confirm carabiner is locked (Sleeve down). Push in on gate to confirm by touch that it is locked.

Instructions for Use

These instructions explain how to correctly use your equipment. Only certain techniques and uses are described.

The warning symbols inform you of some potential dangers related to the use of your equipment, but it does not describe them all.

You are responsible for heeding each warning and using your equipment correctly. Any misuse of this equipment may create additional dangers. Contact Orbsoul if you need more clarification on instructions.

This product is intended for use by medically fit, specifically trained and experienced users.

Keep the Instructions for Use filed for reference. Make sure the markings are legible on the product.

Warning: Repairs, modifications or additions to Equipment should not be made without the manufacturer's prior written consent. Any repair shall only be carried out in accordance with the manufacturer's procedures.

Anchorage Requirements: The anchor should normally be above the user's position and conform to the applicable standard. You are responsible to verify the suitability of this equipment and your anchor and other gear with regard to government and all other applicable standards. The clearance under the user must be sufficient to prevent him from striking an obstacle in case of a fall (the length of the connector can influence the height of a fall). A full-body harness is the only acceptable device in supporting the body in a fall arrest system.

Maintenance & Storage: If necessary, clean with fresh water and air dry away from direct heat. Light surface corrosion may be removed with a wire brush (no power tools). Retire if corrosion is heavy. Store and transport in a dry place away from extremes of heat and cold and avoid exposure to chemicals. Equipment maintenance procedures must be adhered to.

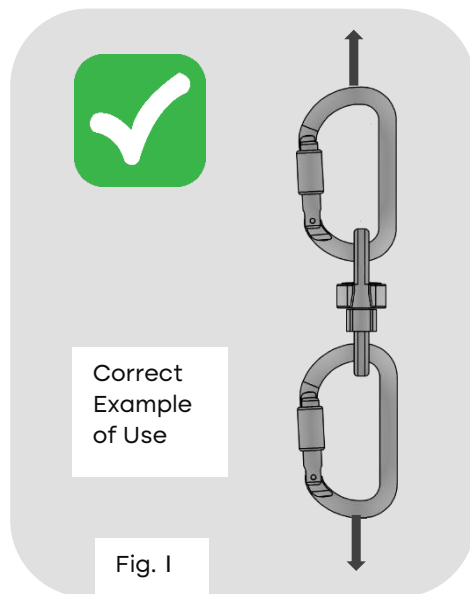


Fig. 1

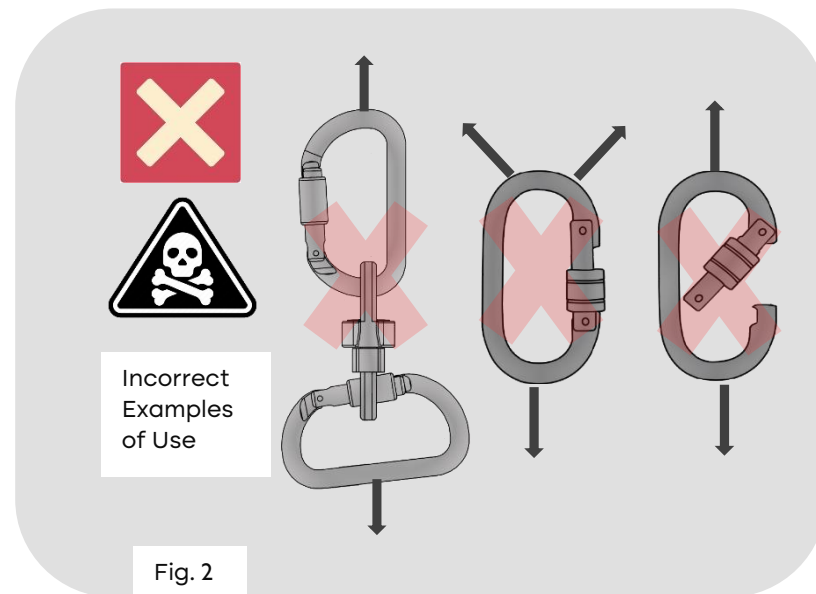


Fig. 2

Compatibility: A connector must be compatible with the equipment to which it is attached (shape, size, etc.). An incompatible connection can cause accidental disconnection, breakage, or affect the safety function of another piece of equipment. You must verify the suitability of this equipment for use in your application with regard to applicable governmental regulations and other standards on occupational safety. Carabiners must never be connected to each other or to snaphooks.

Loading & Force Carabiners achieve full strength only when loaded near the back of the frame. Any other position reduces its strength. Strength will also be reduced by wide webbing or clipping over large objects. A carabiner must be able to move freely and stay properly aligned with the load. Any restraint is dangerous.

An Inward Force on the Gate is Very Dangerous. The sleeve can be broken, causing catastrophic disconnection. This can result from a descent device, anchor, buckle or other object levering against the gate.

Inspection Procedure

Before & After Use

Known product history

- Any PPE showing unexpected degradation should be quarantined, pending a detailed inspection.
- The user should: Provide precise information on the usage conditions.
- History of any exceptional event regarding his PPE. (Examples: major loads, falls, use or storage at extreme temperatures, modification outside manufacturer's facilities, etc.).

Condition and Function of Equipment:

- Check all parts for cracks, deformation, corrosion, wear, legibility of product markings, etc.
- Verify that the gate and sleeve close and lock and function properly in every respect. The Keylock slot must not be blocked by foreign matter and the sleeve function must not be impaired by dirt, ice, corrosion, etc.

The integrity of this equipment is essential to your safety. Regular Periodic examinations are required as safety of use depends on the continued efficiency and durability of the equipment.

WARNING: An exceptional event can lead you to retire a product after only one use, depending on the type and intensity of usage and the environment of usage.

The following hazards may affect performance of the equipment (e.g. extreme temperatures, trailing over sharp edges exposure to chemical reagents, electrical conductivity, cutting, abrasion, certain climate exposure, and pendulum falls).

Retire from service and destroy if the equipment:

1. Has been subjected to a major fall or load
2. Usage history is not known
3. You have any doubt as to its reliability
4. Is misused, altered, damaged, exposed to harmful chemicals, etc.
5. Does not pass inspection

Do not return to service until the unit in question has been inspected and approved for use in writing by an authorized party. Consult with manufacturer if you have any doubts or concerns.

This product meets the requirements of Regulation (EU) 2016/425 on personal protective equipment. The EU declaration of conformity is available at Orbsoul.com

Contact

Visit our website for more info and updates on your equipment.

17 Artisans Crescent
London, ON. N5V 3Y3
Canada

 Orbsoul.com

 support@Orbsoul.com

During Use

Regularly inspect and monitor your system, confirming proper connections, equipment position, fully locked connectors, etc.

Detailed Inspection:

In addition to inspection before, during and after each use, a detailed inspection by a competent inspector must be done at least every 12 months or more depending on amount and type of use.

When needed due to complexity of equipment, or when safety critical knowledge is needed in the dismantling, reassembly, or assessment of the equipment, examinations shall be conducted by the manufacture only or an organization authorized by the manufacturer.

Maintain clear records of usage instructions, history, and inspections. Assign new gear as a personal item to each user for complete history knowledge. If resold outside the original destination country, the reseller must provide usage, maintenance, examination, and repair instructions in the local language.

Documentation	
Product model name	
Supplier contact info	
Batch #	
Year of manufacture	
Purchase date	
Date of first use	

Inspection History			
Inspection Date	Examination Details	Inspector Name	Next inspection Date

Orbsoul 3-year guarantee

If your Orbsoul product has a defect due to workmanship or materials please contact us for full warranty service. This warranty does not cover damages caused by improper care, use, alterations and modifications, accidental damage or the natural breakdown of material over extended use and time.



Instructions for use

English

Harmony Yoga Straps

Description: The Orbsoul Harmony Yoga Straps are made from Nylon yarn. They include 10 loops, triple stitched.

Intended Use: Harmony Yoga Straps are used for yoga hammock, aerial yoga, aerial Pilates. Not suitable for aerial silks.

Warning!

Activities involving the use of this equipment are inherently dangerous. You are responsible for your own actions and decisions.

Orbsoul is not responsible for any direct, indirect or accidental consequences or damage resulting from the use of our products.

Limitations On Use: This product must not be pushed beyond its limits, nor be used for any purpose other than that for which it is designed.

Emergency Situation: You must have a rescue plan in place and the capability to execute it quickly during use in case of difficulties encountered with this equipment. **Warning:** Inert suspension in a knot can swiftly escalate into a life-threatening emergency situation.

Contact

Visit our website for more info and updates on your equipment.

17 Artisans Crescent
London, ON. N5V 3Y3
Canada

 orbsoul.com

 support@orbsoul.com

Before using this equipment, you must:

- Read & understand all instructions for use
- Get specific training on it's proper use
- Know it's capabilities and limitations
- Not use around electrical hazards or near sharp edges/abrasive surfaces.
- Understand & accept the risks involved

Breaking Strength (MBS)	13 kN (1325 kg)
Number of Loops	10
Length	42 inches (106cm)
Certification	—

For aerial yoga & Pilates use only.

Adjust your hammock to your desired height by clipping your carabiner into the loops. Ensure carabiner is fully locked and the yoga strap is not obstructing the gate in any way. Failure to fully lock gate is highly dangerous in all aerial applications.

Warning: Not intended for use with aerial silks. Not intended for use in any moderate dynamic loads such as drops.

Inspection Procedure

The integrity of this equipment is essential to your safety. Regular periodic examinations are required as safety of use depends on the continued efficiency and durability of the equipment.

Before & After Use

Known product history

- Any equipment showing unexpected degradation should be quarantined, pending a detailed inspection.
- The user should: Provide precise information on the usage conditions.
- History of any exceptional event regarding this equipment. (Examples: major loads, falls, use or storage at extreme temperatures, modification outside manufacturer's facilities, etc.).

Condition and Function of Equipment:

- Inspect your yoga strap and ensure there is no snagging or tears along the length.

During Use

Regularly inspect and monitor your system, confirming proper connections, equipment position, fully locked connectors, etc.

Instructions for Use

These instructions explain how to correctly use your equipment. Only certain techniques and uses are described.

The warning symbols inform you of some potential dangers related to the use of your equipment, but it does not describe them all.

You are responsible for heeding each warning and using your equipment correctly. Any misuse of this equipment may create additional dangers.

Contact Orbsoul if you need more clarification on instructions. This product is intended for use by medically fit, specifically trained and experienced users. Keep the Instructions for Use filed for reference. Make sure the markings are legible on the product.

Warning: An exceptional event can lead you to retire a product after only one use, depending on the type and intensity of usage and the environment of usage. (eg. Extreme temp, trailing over sharp edges, exposure to chemicals, pendulum falls etc.)

Retire from service and destroy if the equipment:

1. Has been subjected to a major fall or load
2. Usage history is not known
3. You have any doubt as to its reliability
4. Is misused, altered, damaged, exposed to harmful chemicals, etc.
5. Does not pass inspection
6. Shows flaws such as snagging or tearing

Do not return to service until the unit in question has been inspected and approved for use in writing by an authorized party. Consult with manufacturer if you have any doubts or concerns.

Detailed Inspection:

In addition to inspection before, during and after each use, a detailed inspection by a competent inspector must be done at least every 6 months or more depending on amount and type of use. Maintain clear records of usage instructions, history, and inspections. Assign new gear as a personal item to each user for complete history knowledge. If resold outside the original destination country, the reseller must provide usage, maintenance, examination, and repair instructions in the local language.

Maintenance & Storage:

- If necessary, clean with fresh water and air dry away from direct heat.
- Store and transport in a dry place away from extremes of heat and cold and avoid exposure to chemicals.

Documentation

Product model name	
Supplier contact info	
Purchase date	
Date of first use	

Warning: Repairs, modifications or additions to equipment should not be made without the manufacturer's prior written consent. Any repair shall only be carried out in accordance with the manufacturer's procedures.

Inspection History

Inspection Date	Examination Details	Inspector Name	Next inspection Date

Orbsoul 3-year guarantee

If your Orbsoul product has a defect due to workmanship or materials please contact us for full warranty service. This warranty does not cover damages caused by improper care, use, alterations and modifications, accidental damage or the natural breakdown of material over extended use and time.