

# HC-BetterLife SMART CURTAIN TRACKS



Start your intellectual life



WiFi



Smooth running



radio control



manual start



large load



easy installation



high quality

This product matches TUYA smart system, please download TUYA smart app when operate.



## 1 Motor connected to network

### Connection conditions

#### 1. Install TUYA SMART APP

Search for "TUYA SMART" in the mobile phone application market or scan the QR code below to download the app

Follow the prompts to register an account



#### 2. Prepare a motorized curtain product kit

#### 3. WiFi connection



NOTE: Choose the 2.4G WIFI nearest to curtain, without Chinese characters in its name.

### APP instruction

Take the ios users as an example, Android is similar.

After registering account, you will see 3 pages according to the 4 selections of home page.



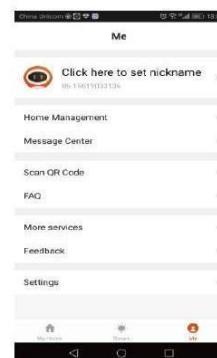
(1)

Figure 1: The main interface: "My Home" in the menu you can add the family through the upper left corner, add devices in the upper right corner "+", below is the weather, room settings, and add equipment bar.



(2)

Figure 2: "Smart" page, add intelligent scene, when there are multiple devices, you can set a key trigger to achieve custom scene settings;



(3)

Figure 3: "me", you can modify personal information, set up a group or family, view past information, process individual orders, FAQs, feedback, and some set up information.

## Connection instruction

1 Click "+" or "Add Device"

2 Enter the device add page, click on all devices

3 Enter the device options page, select the curtain page

4 Enter the device add page, when power up, confirm that the motor indicator light is flashing rapidly. If not, press the motor button three times quickly, the indicator light flashes quickly.

4 Enter the WIFI password and click "confirm" (Choose the 2.4G WIFI nearest to curtain, without Chinese characters in its name)

5 During the distribution on process, the motor indicator flashes quickly, then flashes slowly, finally lights up. After the distribution on network is successfully, the indicator light goes out, and the APP prompts the distribution on network successfully.

6 After the addition is successful, allocate the room to the device for easy management, such as selecting the master bedroom, click finish, enter the device control page; exit the device main page, view the device you just added in the "all devices" and "Master bedroom" to see if the device status is offline.

## 2 Operation manual

Install the motor, open APP

me-all-curtain, click curtain

After installed the curtain motor, let the motor running once to check the running direction, if the motor runs not the opposite direction, you can change following the right steps.

Long press the "pause" of APP page

Change direction

The motor will vibrate once

Direction changed

In addition, you can change by remote (solution details please read manual)

"open" is open the curtain, "Pause" is stop curtain running, "close" is close  
 "Timer" is used to set the open and close time, you can also set by sliding the curtain progress bar in the page.



Equipment details: click the up right signal of picture 10, go into equipment details menu, you can edit the device name; set the position of device, here are the third device control available, you can use to match with other controls; you can remove or delete devices and so on. After removing a device, you need to connect to network again if you want to add.

**Change network:** You need to connect to network again by "add device" if change it.

# AMAZON ECHO VOICE CONTROL

## Operation conditions

1. TUYA smart APP added device successfully
2. Download Amazon Alexa APP
3. Have amazon echo smart speaker
4. WIFI is 2.4G, and without Chinese character in it

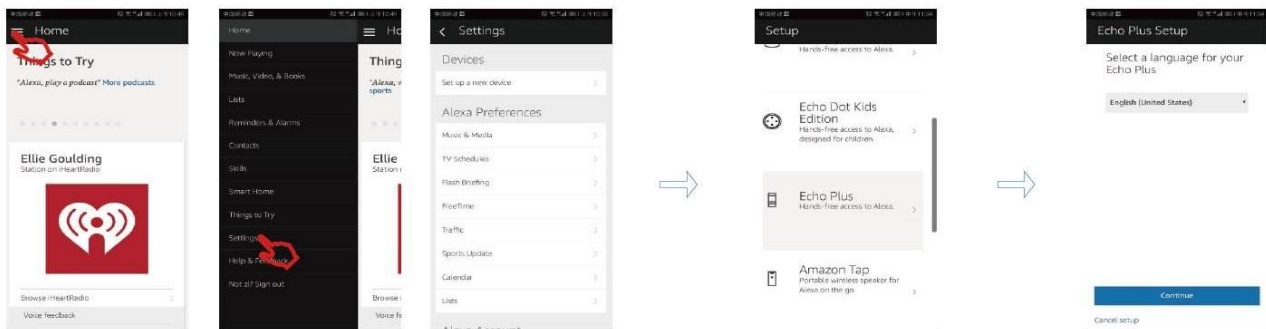


NOTE: Modify the device's name to the words that easily identifiable by Alexa, such as "red light".

## Operation manual

Take the ios users as an example, Android users is similar.

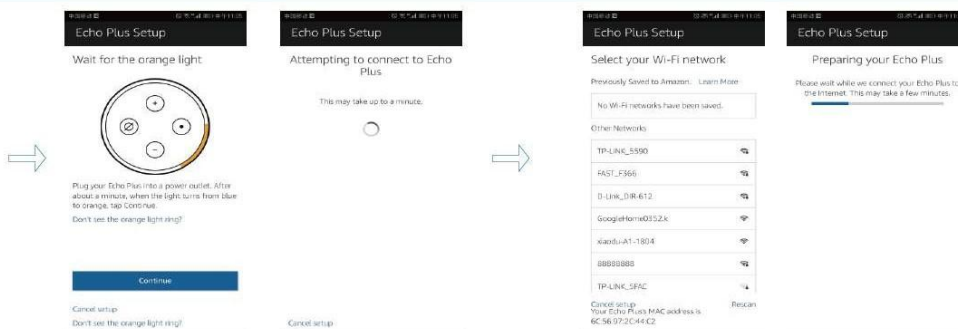
Please make sure that amzn echo smart speaker has been powered up, and connected to wifi.



Open APP, login, click on the menu in the top left corner of the home page, select "setting", click "set up a new device" to set amazon echo.

Select speaker

Select language

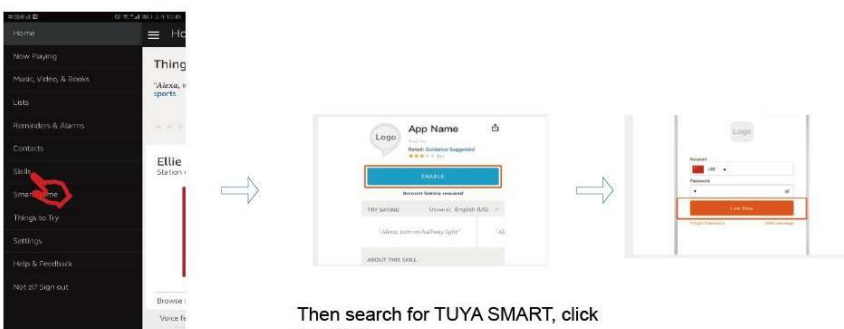


After connecting to wifi, click "continue" an introduce video appears, when video finishes, click "continue", the page jumps to home page, then set Amazon echo successfully.

Long press the button of speaker until the yellow light rotate, and hear the tone, click "continue", connect internet, enter next step.

Select the wifi, then wait for Amazon echo connecting to wifi.

## Bind TUYA smart account



Then search for TUYA SMART, click "enable"

Input TUYA SMART account, click "link now" to bind your TUYA APP account, then you can start skill, start enjoy your smart home trip.

Click and enter "skill" on App menu

# GOOGLE HOME VOICE CONTROL

## Operation conditions

1. TUYA smart APP added device successfully
2. Download Google Home APP
3. Have a Google home smart speaker
4. WIFI is 2.4G, and without Chinese character in it



NOTE: Modify the device's name to the words that easily identifiable by Alexa, such as "red light".

## Operation manual

Take the ios users as an example, Android users is similar.

Please make sure that Google home smart speaker has been powered up, and connected to wifi.



login google home App, click the "set up" on the top left corner, to set google home.

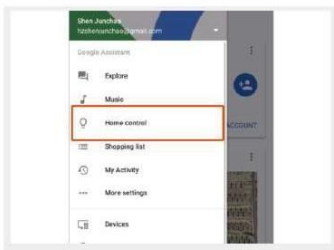
If here is tone prompt, you connected the right device, then click "yes", go into next step.

Allocate the room position for google home, then select wifi and language, click "next" if finish

Select if you agree with operations according to prompt, when "google home is ready" appears, click "continue"

When finish, here will be a teach video, after it, click "finish set up", google home set successfully.

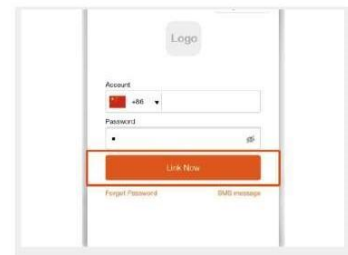
## Bind TUYA smart account



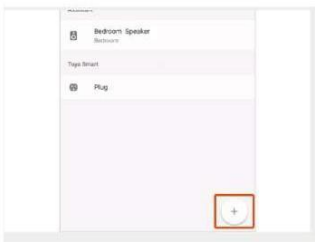
Select "home control" on the left of home page of google home App.



Click "+" on the bottom right corner search for "TUYA SMART"



Find TUYA SMART, enter it, select the country your TUYA account belongs to, account and password, click "link now".



Select which room your device belongs to, then you can find "skill" in the list of "devices" - home control, then you can start your smart hometrip.