



*All Giannini Garden ornaments are original designs. We start with an idea, then make a detailed drawing.*



*An original is sculpted from the drawing.*



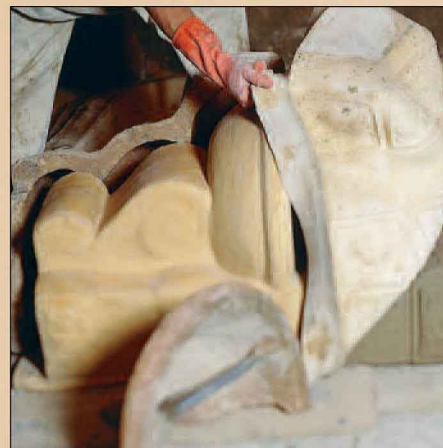
*Latex is painted over the sculpture and let dry, creating a mold.*



*A fiberglass shell is created over the latex mold.*



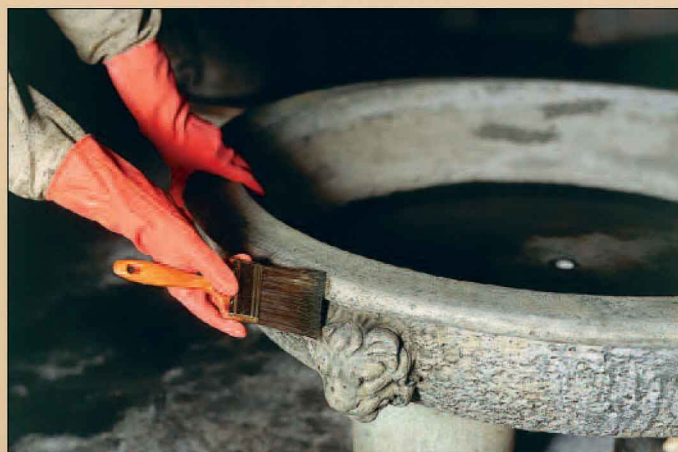
*Concrete is hand-poured into mold.*



*Concrete is left to dry for twenty-four hours and the garden ornament is then taken out and cured.*



*The piece is then sanded and prepared for finishing.*



*Finally, the piece is hand-colored in one of Giannini's signature finishes.*