



# DIY Handcrafted Rock Fountain Kits Installation Manual



**Blue Thumb**

For Use With GFRC  
Handcrafted Rock DIY Kits  
using 2x2 or 4x4 Basins

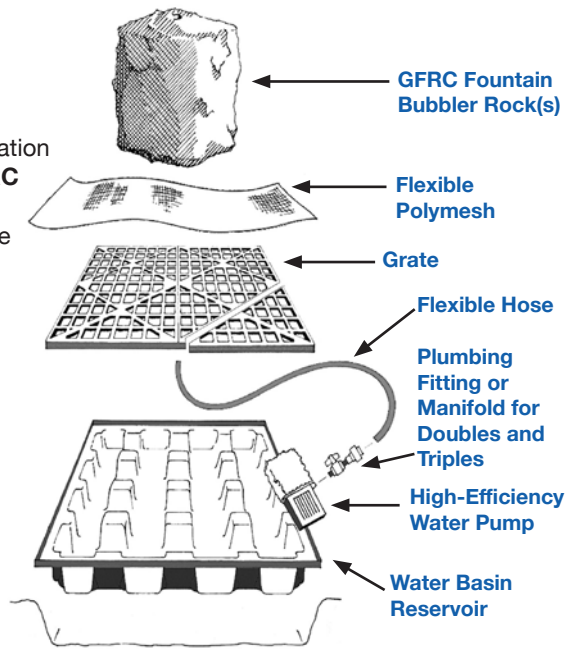
## INCLUDED in this kit:

Blue Thumb makes installation of your **Handcrafted GFRC Fountain Bubbler Rock Kit** easy by following these instructions.

Subscribe to our YouTube channel, **BlueThumbINC**, for related informational videos.

### Tools necessary for installation:

- Scissors or utility knife
- Shovel
- Level
- Marker paint (optional)
- Jigsaw (only for double and triple fountains)



## STEP 1

### Choose Your Fountain Basin Location

When choosing a location for your fountain, select an area large enough to accommodate the basin AND any possible water overspray from wind. The basin should not be put near vegetation or structures not suitable for excessively wet conditions.

Place basin/reservoir in chosen location and use a shovel or marker paint to outline the ground around the basin.

**IMPORTANT: BEFORE EXCAVATION BEGINS BE SURE TO CALL MISS DIG OR YOUR UTILITY COMPANY.**



## STEP 2

### Dig the Fountain Basin Hole

Follow the outline and dig a hole deep enough for the basin. You want the top edge of the basin to extend above grade by about 1". If the soil is unstable, dig the hole 3" deeper and back-fill with 3" of crushed rock or gravel. This will provide a solid fountain for the fountain basin. Make sure the ground is level before adding your basin.

## STEP 3

### Placement and Leveling the Fountain Basin

Insert the fountain basin into the hole and use a level to make sure the basin is level from front-to-back and side-to-side.



Note that near one corner of the basin there is a spinweld fitting installed in the basin. This can be used with our optional Auto Fill Kit should you desire (see below), but for now it's important for that corner to face the direction of your electrical outlet. This corner of the basin is where your pump will be installed. Simply rotate the basin until the corner with the spinweld is in the desired location. Place grates with the corner grate piece over the pump as access.



### Optional Auto Fill Kit Install

If an Auto Fill Kit is being incorporated, you may bury your water supply line and make any Auto Fill connections at this time.



Kit Item: #ABDAUTO

## STEP 4

### Backfill Around the Basin

Use previously removed soil to backfill around the fountain basin. Be sure to tamp the dirt to pack it in as tightly as possible. This helps prevent future settling. We recommend leaving your basin covered while backfilling to prevent dirt from falling into the reservoir.



## STEP 5

### Install the Pump and Plumbing

Thread the included fitting onto the pump discharge then hand-tighten one end of the hose to the grey union on the pump. Set the pump inside the basin (pump may be laid on its side if necessary).

If you have a **double or triple fountain** system, there will be a manifold system attached to the pump so you can regulate how much water goes to each bubbler.





## STEP 6

### Install Grate and Polymesh Screen

Place the grate on top of the basin oriented with the triangular corner access panel over the pump.

If you have the **2x2 basin** you will have a single grate with triangular piece cut for pump access.

If you have the **4x4 basin** you will have two grates to piece together with one of them cut for pump access.

Lay the polymesh screen on top of the grates and run the pump power cord up through the access corner.



## STEP 7

### Attach the Bubbler Rock(s)

Determine placement of the bubbler rock(s). Take the threaded end of the hose and pull up through the grating and then through a small hole cut in the polymesh screen. The screen can be cut using scissors or a utility knife.

Next, place the bubbler rock on the basin near the protruding hose. Tilt rock on edge and hand-tighten the union and hose together on the underside of the rock. Carefully stand the rock upright while keeping the flex hose from binding where it extends through the grate.

Repeat if you have more than one bubbler rock.



## STEP 8

### Fill and Test

Fill the basin reservoir with water. The water level should be at or near the bottom of the grate. Check and adjust the water level periodically.

Turn on the pump by plugging it into a grounded GFCI (Ground Fault Circuit Interrupter) 110 volt electrical outlet.

You may plug the pump into any outdoor rated timer (not included) if you wish to only have the fountain running during certain hours of the day.

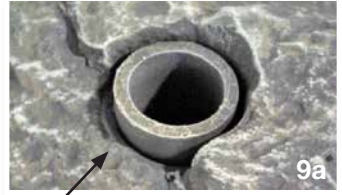
## STEP 9

### Water Flow Control

**9a For double or triple fountains,** achieve the desired sound and aesthetic flow, adjust the rate of water to each of your bubblers by turning the red ball valve handle on your plumbing until the desired flow is obtained.



**9b For single fountains,** you can change the flow slightly using the dial located on the pump. Your fountain bubbler also comes with a small O-ring insert located in the top where the water flows out which can be adjusted up or down for desired water plume height. Splash should be kept to a minimum to avoid excessive refilling.



O-ring for  
plume height  
adjustment

## STEP 10

### Finishing Touches

Your fountain is now ready for the final touches of landscape design. Start by covering your polymesh screen with river rock or other decorative rock products. There are many styles and colors available, and these can be found at any rock yard or garden center.

Avoid placing soil or mulch on top of the screen as it may fall through the screen and clog your pump. Use landscape plants to decorate around your basin completing the look.

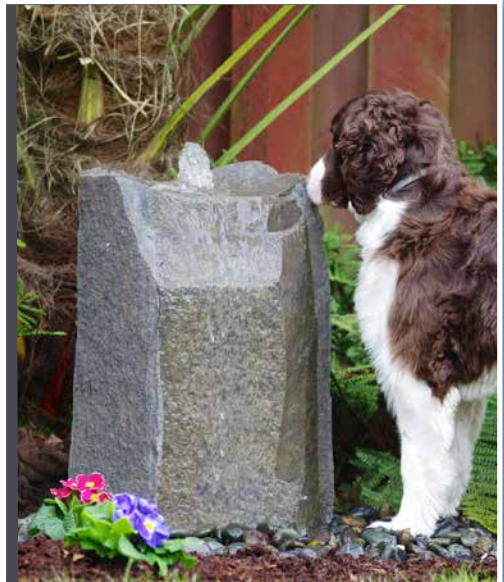
## ENJOY!

Time to grab your favorite drink and relax around your newly installed fountain.

**SHARE!**   

Inspire others by visiting our Facebook and Instagram pages to post a picture of your completed project for all to see!

Single fountain  
water flow  
control dial



# CARING FOR YOUR GFRC BUBBLER ROCK

## Tips to keep your bubbler rocks looking great!

Our GFRC (Glass Fiber Reinforced Concrete) bubblers are designed to provide years of enjoyment, with minimal care or maintenance required. Because they are made of concrete, they are very rugged and will withstand the elements without color fade or discoloration common in inferior faux stones.

## Cleaning - Dirt spots

GFRC rocks will age in a very similar manner as natural stones. If you need to clean the rocks, a good blast from a garden hose will usually work, although mild soap and a soft-bristle brush can be used as well.

## Cleaning - Algae and moss

Over time, moss and algae may develop on your rock, just as it would on natural stone. The time it takes will depend on how often you have your fountain turned on, how much shade or sunlight it gets, and how often fresh water is added to the fountain base. If your rock is accumulating more moss or algae than you desire we recommend using Fountain Cleaner by Blue Thumb, which is designed to reduce moss/algae growth.

## Efflorescence - Causes and cleaning / removal

Any material containing Portland cement (pre-cast stone, GFRC products, etc) has the potential to effloresce. Efflorescence is caused when soluble salts and other water materials come to the surface of concrete and mortar. Most often, efflorescence will be minor, and can manifest itself in a couple of ways - either as a powdery, fluffy substance, which is brushed off with a nylon-bristle scrub brush, or as a crystallized deposit on the rock.

To keep efflorescence to a minimum, run your bubbler non-stop for three to four weeks after first installing the fountain. **If efflorescence appears, do not let it dry!** While it is wet, scrub the area with the nylon-bristle brush, until the efflorescence is gone. This may need to be repeated until all the salt has been worked out of the rock. The key is to not let any efflorescence dry! If the efflorescence has been allowed to dry and has attached itself to the rock, then an efflorescence remover (such as Techni-Seal), is recommended. Even with that, some staining or efflorescence may remain which is why rocks should not be allowed to dry until any efflorescence has been worked out of the rocks.

## Electrical precautions

Always use a properly grounded outlet. Do not immerse the pump plug in water. If the plug falls into the water, **DO NOT REACH INTO THE WATER TO REMOVE THE PUMP PLUG. TURN OFF THE CIRCUIT FIRST!** A "drip loop" should be used. The "drip loop" is a loop in the electrical cord below the level of the receptacle or plug, which prevents water from traveling along the cord. The National Electric Code requires a ground fault circuit interrupter (GFCI) be installed in the branch circuit supplying fountain or pond equipment.

**WARNING: NEVER REMOVE THE GROUND PIN FROM THE ELECTRICAL PLUG. FOR YOUR PROTECTION, ALWAYS UNPLUG THE PUMP UNIT FROM ITS POWER SOURCE BEFORE INSTALLING OR SERVICING YOUR FOUNTAIN. SHOULD THE UNIT APPEAR TO NOT BE WORKING PROPERLY, DO NOT REACH FOR, REMOVE OR DISASSEMBLE THE PUMP BEFORE YOU DISCONNECT THE POWER!**

# GFRC BUBBLER ROCK FOUNTAIN

## Pump service and maintenance

Periodically inspect and clean the pre-filter. To clean, remove pre-filter from the water pump and rinse using clean water. Replace the pre-filter if it becomes damaged or torn.

The cap over the impeller should occasionally be removed to clean and inspect the impeller assembly. The impeller is the only serviceable item and can be pulled out of the pump body. **Do not take the impeller apart.** If it is worn or broken, the entire impeller assembly should be replaced. This will restore the pump to its original functionality. Pumps taken out of service for an extended period with fluid inside run the risk of forming a crust, which may prevent subsequent starting. Saltwater should be flushed out with fresh water. Always check the electrical cord for sharp bends, which can cause premature cracking. **Do not use the power cord to lift or move the pump.**

## Reservoir maintenance

Handcrafted GFRC fountain kits are designed to require very little maintenance. Because of the “pondless” design, there are no filters to change and very little if any debris should get into your water reservoir. However, periodic attention is suggested to identify any potential issues before they start.

Check and adjust water level periodically, keeping the water level at or near the bottom of the grating and no lower than the water pump outlet. Also, remove any dirt, rock or debris from inside the fountain base that may cause damage to the water pump or flexible hose.

**Note:** Due to overspray and evaporation, clean water must be added periodically. Failing to do so could cause the water pump to run dry, resulting in a damaged pump. Damage to the pump due to an inadequate water level will void the limited warranty. Periodically inspect the grating and polymesh screen for damage. Replace if necessary.

## Winterization of your fountain

In colder climates where temperatures reach 32°F on a regular basis, or where temperatures will drop substantially below freezing even for short periods of time, you should shut your fountain off during the cold months. Remove the pump by disconnecting from the valve/manifold assembly. Store the pump in a bucket of water (to prevent the pump seals from drying out) in a temperature controlled atmosphere (above freezing). **Leave the water in the reservoir, do not empty it.**

## How to get replacement parts

For replacement parts contact us directly at:

Phone: **888-619-3474**

Email: [sales@bluethumbponds.com](mailto:sales@bluethumbponds.com)

**Go to [www.shopbluethumb.com](http://www.shopbluethumb.com)  
for additional information and tutorial videos.**



# Maintenance

## General Fountain and System Maintenance

- It is OK to run pump continuously 24/7, or you may choose to connect it to a timer.
- Fill evaporated water as necessary or considering installing an Auto Fill Kit #ABDAUTO.
- Add Muck Buster® #PB2682 every couple of weeks to the basin to ensure muck doesn't build-up over time and clog the pump. 3 tablets treat 500 gallons of water.
- If algae forms on columns, brush off and use CrystalClear® Algae D-Solv® #PB2002 to quickly clear organic debris and remove odors. 1 ounce treats 360 gallons.
- It is OK to run pump continuously 24/7, or you may choose to connect it to a timer.



Auto Fill Kit  
#ABDAUTO



Muck Buster®  
#PB2682



Algae D-Solv®  
#PB2002

## Winterizing:

- If you live in a climate that experiences prolonged freezing conditions, we recommend removing the pump from the basin when temperatures begin to drop below freezing. To remove the pump, disconnect from the valve/manifold assembly. Place the pump in a bucket of water in a temperature controlled atmosphere (above freezing). This prevents the pump seals from drying out.
- **Do not drain the basin** during the winter months. Allow the water to freeze in the basin so that the ground doesn't cause the basin to rise or "pop up" from expansion of the freezing soil around it.
- Our GFRC Fountains are manufactured to withstand freezing conditions and may be left outside during the winter months if you choose. There is no need to cover the Fountains, but you may do so if you desire.

## Spring Start-Up:

- Once everything has thawed in the spring we recommend draining the water in the basin and replacing it with fresh, clean water. A wet/dry vacuum works well for removing water and accumulated debris.
- Reconnect the pump and plug it in.
- Add Muck Buster® to remove any remaining muck that was not able to be removed manually.

If you need replacement parts please contact us directly at **888-619-3474** or email us at [sales@bluethumbponds.com](mailto:sales@bluethumbponds.com).

Now, snap a picture of your completed waterfall and post it to our Facebook page at [facebook.com/bluethumbinc/](https://facebook.com/bluethumbinc/)!

[www.shopbluethumb.com](http://www.shopbluethumb.com)

