

TECHNICAL SPECIFICATIONS

Input	: 12-24V's2A
Output	: 18W (5V*3A, 9V*2A, 12V*1.5A)
Fast Charge Protocol	: QC3.0
Maximum Power	: 18 W
Material	: Stainless Steel, Aluminium, PA66+GF
Water Proof	: IPX6
Suitable Phones	: Most Smartphones
Suitable Handlebar	: 22mm/25.4mm/32mm
Adjustable Angles	: 360°
Product Size	: 50-110-60 mm
Product Weight	: 210 g

WARRANTY STATEMENT

Amkette's iGrip Secure Pro Bike Phone Holder is backed by 1 Year performance warranty against any manufacturing defect in material or workmanship from the date of original purchase. This warranty entitles the purchaser to get the product

- The warranty applies to the original purchaser. Proof of original purchase is required.
- The warranty does not cover the damage caused by misuse, abuse or improper storage.
- In no event shall Amkette be responsible for any direct, incidental, consequential or other damages of any kind.

Please contact our Technical Support Line and/or send the defective product, postage pre-paid, together with the proof of purchase to our Customer Care Service

**Customer Care Service Centre:**  
Amkette House, C-64 / 4, Okhla Phase - II, New Delhi - 110020

1800-11-9090 (Toll Free) (9:30 AM - 6:00 PM) Mon - Sat    +91 9312691448 (9:30 AM - 6:00 PM) Mon - Sat    techsupport@amkette.in

**For Hassle Free Service Register your product online at**  
www.amkette.com/register



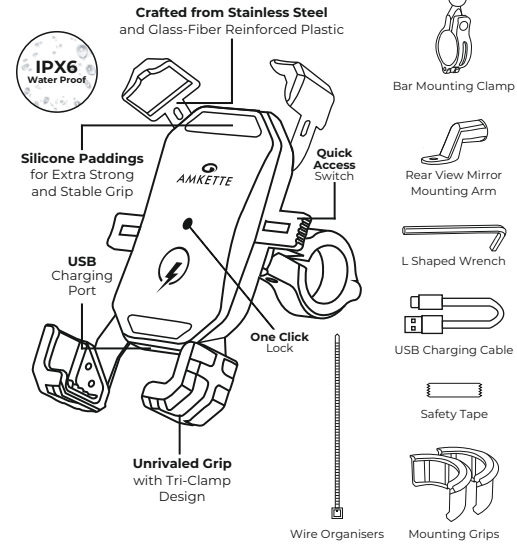
**iGrip Secure Pro**  
Bike Phone Holder with Charging Function

USER GUIDE

IN THE BOX

Phone Holder with Tightening Nut, Bar Mounting Clamp, Rear View Mirror Mounting Arm, 2 Pairs of Mounting Grips (1 Already Installed), Safety Tape, L Shaped Wrench, USB Charging Cable, Wire Organisers

KNOW YOUR PRODUCT



For Detailed Installation Videos Scan the QR Code below!

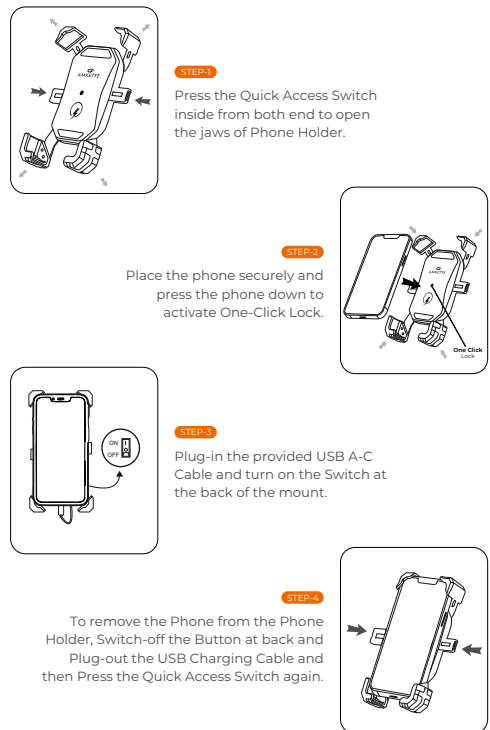


**FREE**  
**iGrip**  
**Drive Assist**

Scan the QR Code to download the App

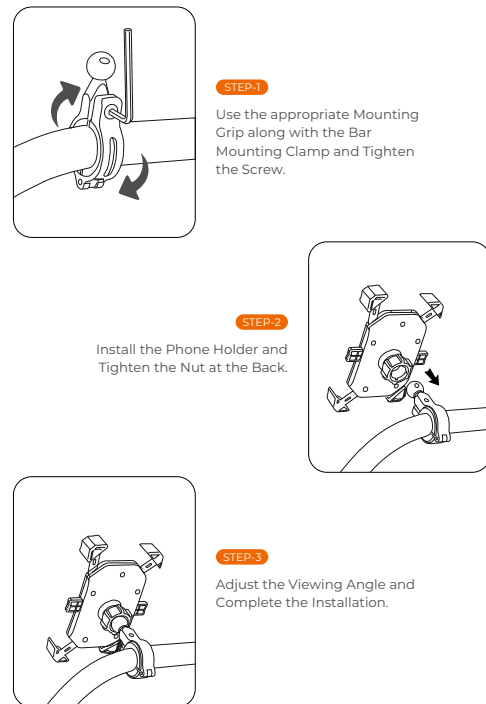


SINGLE HAND MOUNTING OF THE PHONE



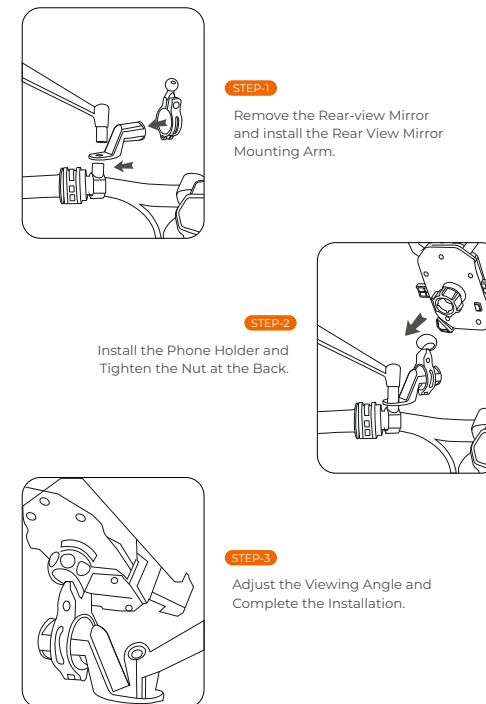
**Note:** Turn Off the switch at back of the Phone Holder when not is use.

INSTALLING THE MOUNT USING HANDLE BAR CLAMP

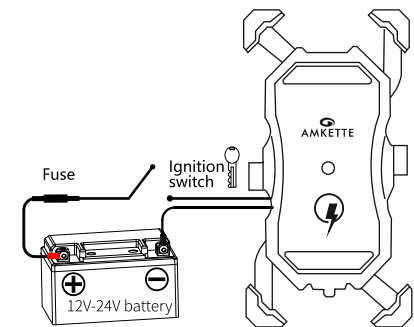


**Note:** Tightening the Bar Mount may leave scratches. Please use the Safety Tape for scratch less mounting.

INSTALLING THE MOUNT USING REAR-VIEW MIRROR CLAMP



CONNECTING TO THE BATTERY



- Locate your 12V-24V Battery in battery compartment of the bike and guide the wire of Bike Phone Holder across the body of the bike using the provided wire organisers.
- Connect the positive and negative terminal of the battery to the red and black terminal of wire of the Bike Phone Holder respectively.
- Now locate the Ignition switch and Connect the wire from the fuse holder to the ignition switch.

**Note:**

- We recommend taking help of your Bike Technician to install the Bike Phone Holder.
- Make sure the wire is not directly touching the Hot parts around the engine.
- Please use the spare Fuse in case it gets damaged.