

Front



WARRANTY STATEMENT

Amkette's iGrip Secure Plus Bike Phone Holder is backed by 1 Year performance warranty against any manufacturing defect in material or workmanship from the date of original purchase. This warranty entitles the purchaser to get the product repaired or replaced under the following conditions:

- The warranty applies to the original purchaser. Proof of original purchase is required.
- The warranty does not cover the damage caused by misuse, abuse or improper storage.
- In no event shall Amkette be responsible for any direct, incidental, consequential or other damages of any kind.

Please contact our Technical Support Line and/or send the defective product, postage pre-paid, together with the proof of purchase to our Customer Care Service Center to avail warranty service. Return postage will be paid by us.

Customer Care Service Centre:
Amkette House, C-64 / 4, Okhla Phase - II, New Delhi - 110020

1800-11-9090 (Toll Free) (9:30 AM - 6:00 PM) Mon - Sat | +91 9312691448 (9:30 AM - 6:00 PM) Mon - Sat | techsupport@amkette.in

For Hassle Free Service Register your product online at www.amkette.com/register



iGrip Secure Plus

Bike Phone Holder

USER GUIDE

-8-

Front

For Detailed Installation Videos
Scan the QR Code below!



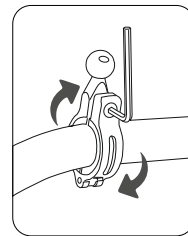
FREE
iGrip
Drive Assist

Scan the QR Code
to download the App

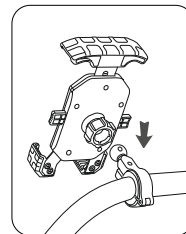


-6-

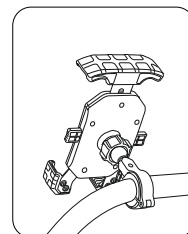
INSTALLING THE MOUNT USING HANDLE BAR CLAMP



STEP-1
Use the appropriate Mounting Grip along with the Bar Mounting Clamp and Tighten the Screw.



STEP-2
Install the Phone Holder and Tighten the Nut at the Back.



STEP-3
Adjust the Viewing Angle and Complete the Installation.

Note: Tightening the Bar Mount may leave scratches. Please use the Safety Tape for scratch less mounting.

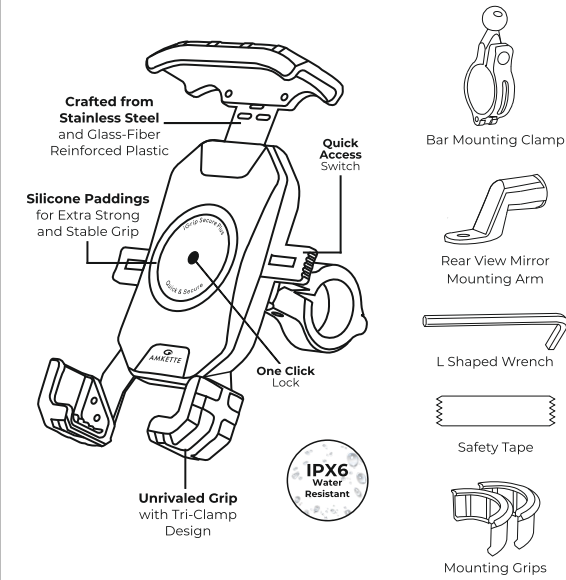
-3-

Back

IN THE BOX

Phone Holder with Tightening Nut, Bar Mounting Clamp, Rear View Mirror Mounting Arm, 2 Pairs of Mounting Grips (1 Already Installed), Safety Tape, L Shaped Wrench

KNOW YOUR PRODUCT



TECHNICAL SPECIFICATIONS

Material : Stainless Steel, Aluminium, PA66+GF

Water Proof : IPX6

Suitable Phones : Most Smartphones

Suitable Handlebar : 22mm/25.4mm/32mm

Adjustable angles : 360°

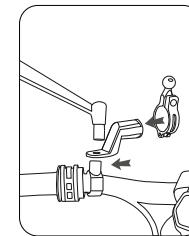
Product Size : 50-110-60 mm

Product Weight : 210 g

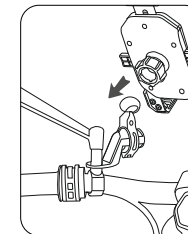
-7-

Front

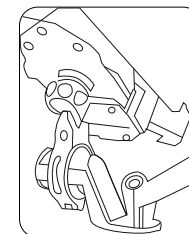
INSTALLING THE MOUNT USING REAR-VIEW MIRROR CLAMP



STEP-1
Remove the Rear-view Mirror and install the Rear View Mirror Mounting Arm.



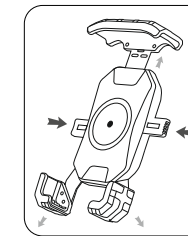
STEP-2
Install the Phone Holder and Tighten the Nut at the Back.



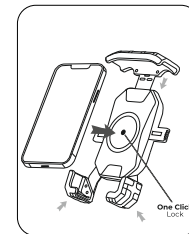
STEP-3
Adjust the Viewing Angle and Complete the Installation.

-4-

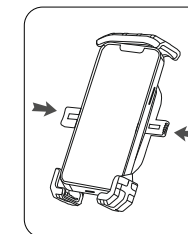
SINGLE HAND MOUNTING OF THE PHONE



STEP-1
Press the Quick Access Switch inside from both end to open the jaws of Phone Holder.



STEP-2
Place the phone securely and press the phone down to activate One-Click Lock.



STEP-3
To remove the Phone from the Phone Holder, Press the Quick Access Switch again.

-5-

Back