

TECHNICAL SPECIFICATIONS

Technology	: 2.4 GHz Wireless
Connection	: Plug n' Play
Wireless Range	: up to 10 meters
Tracking Method	: Optical
DPI	: 800 / 1200 / 1600 Adjustable (1200 Default)
Tracking Surface	: Multi Surface Tracking
Multimedia Keys	: 12
Keyboard Layout	: Full Size
Keyboard Battery	: 1 x AAA Battery
Mouse Battery	: 1 x AA Battery

TROUBLESHOOTING

- Please ensure that the batteries in both Keyboard and Mouse are installed properly and the mouse is turned on.
- Ensure that all the batteries are in working condition.
- Plug the Nano USB receiver in a different USB port.
- If the connection is lost by any chance simply re-insert the Dongle into the USB port.
- Restart your PC or Laptop with Nano receiver plugged in the USB port.

WARRANTY STATEMENT

Amkette's Wi-key NXT Wireless Keyboard and Mouse Combo is backed by a 1 Year performance warranty against any manufacturing defects in material or workmanship from the date of original purchase. This warranty entitles the purchaser to get the product repaired or replaced under the following conditions:

- The warranty applies to the original purchaser. Proof of original purchase is required.
- The warranty does not cover the damage caused by misuse, abuse or improper storage.
- In no event shall Amkette be responsible for any direct, incidental, consequential or other damages of any kind.

Please contact our Customer Support Line and/or send the defective product, together with the proof of purchase to our Customer Care Service Center to avail warranty service. Return charges will be paid by us.

Customer Care Service Centre:

Amkette House, C-64 / 4, Okhla Phase - II, New Delhi - 110020

1800-11-9090 (Toll Free) (9:30 AM - 6:00 PM) Mon - Sat +91 9312691448 (9:30 AM - 6:00 PM) Mon - Sat techsupport@amkette.in

For Hassle Free Service Register your product online at www.amkette.com/register


AMKETTE
Digital Life Redefined

QUICK START GUIDE



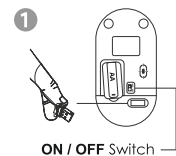
WI-KEY NXT

SLIM AND SILENT WIRELESS KEYBOARD & MOUSE COMBO

Front

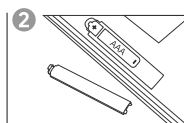
PLUG-AND-PLAY INSTALLATION

Take out the Nano USB Receiver located inside the Mouse battery compartment.

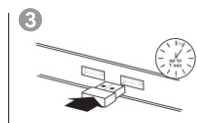


ON / OFF Switch

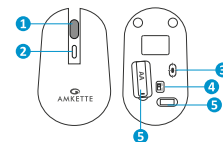
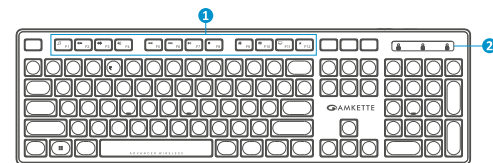
Insert the batteries into the Keyboard and Mouse.



Plug the USB receiver in to a USB port on your PC or Laptop.



KNOW YOUR DESKTOP COMBO



Mouse

- 1 Scrolling Wheel
- 2 DPI Switch Button
- 3 Optical LED Sensor
- 4 ON/OFF Switch
- 5 Nano USB Receiver
Inside the battery compartment.
- 6 Battery Compartment

Keyboard

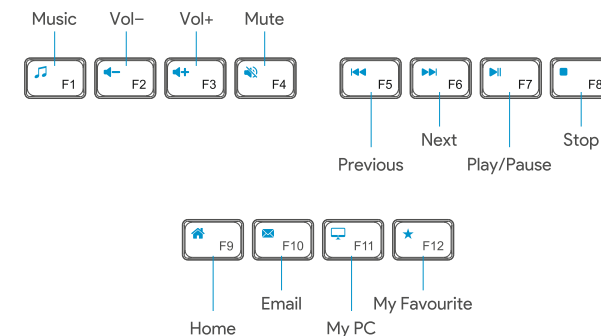
- 1 Multimedia Shortcuts
- 2 LED Indicators
Num Lock: Solid Green
Caps Lock: Solid Green
Low battery: Blinks in Green
- 3 Battery Compartment
Back side of the Keyboard

WHAT'S IN THE BOX

- 1 x Wireless Keyboard
- 1 x Wireless Mouse
- 1 x Quick Start Guide
- 1 x Nano USB Receiver

MULTIMEDIA SHORTCUTS (KEYBOARD ONLY)

This Wireless Combo is designed for Instant media access. Single press the multimedia keys for instant access to various media functions.



POWER SAVING MODE

To extend the standby time and reduce battery consumption, the combo will enter into sleep mode after 2 minutes of inactivity. Click on mouse button to exit from sleep mode.

ADJUSTABLE MOUSE SPEED

Designed to meet the needs of different users Wi-Key NXT Wireless Combo mouse comes with an adjustable DPI Switch to adjust the sensitivity of the mouse between 3 Speed Levels (800/1200/1600).

Back