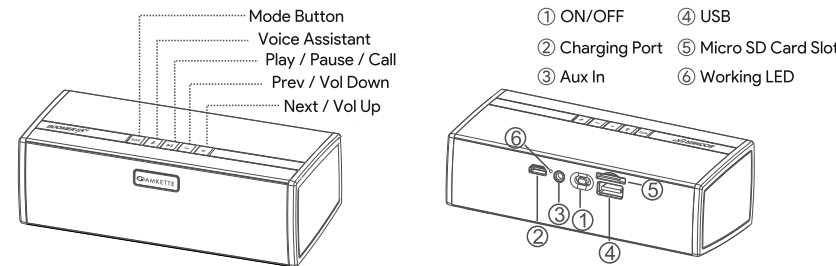




KNOW YOUR SPEAKER



WHAT'S IN BOX

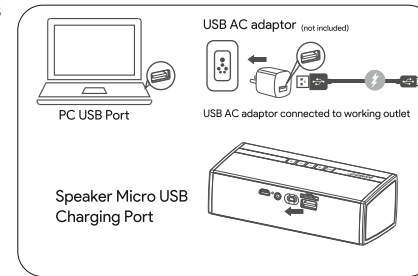


GETTING STARTED-CHARGING THE SPEAKER

Charge the speaker before use and keep speaker OFF for faster charging.

- Connect the Micro USB end of the included Micro USB cable to the USB Charging Port of the speaker.
- Connect the standard USB plug end of the cable to a powered USB port on a Desktop / Laptop or any 5V USB AC adaptor (Not included).

The status indicator light will be solid RED when charging and will turn OFF once fully charged.



POWER ON / OFF

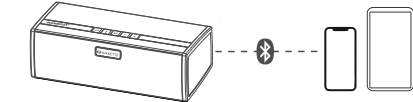
Slide Left to Switch ON the speaker. ON Slide Right to Switch OFF the speaker. OFF

BLUETOOTH PAIRING

Bluetooth pairing with Smartphone or Laptop for the first time.

- Turn ON the Amkette Boomer FX+ speaker.
- The status indicator light on the back of the speaker will flash blue indicating the pairing mode.

- "Amkette Boomer FX+" should appear in your device's Bluetooth menu. Select "Amkette Boomer FX+".



When connected the blue LED indicator will remain ON

Note 1: When the speaker is under Bluetooth mode, it will be connected to the last connected device by default. If you want to connect the speaker to another device you need to disconnect from the original device.

VOICE ASSISTANT

You can use one click dedicated Voice Assistant Button on your speaker to access the Google Assistant (Android) or Siri (iOS) on your device.



Things to try

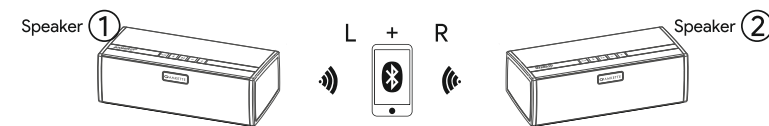
- "What's the weather?"
- "What's trending?"
- "Call Mom"
- "Set an Alarm for 05:30 AM"

You hear a tone that indicates Voice Assistant is active.

Note: The Speaker must be connected to your smartphone via bluetooth for Voice Assistant Activation

TWS (TWIN SPEAKER PARING)

You can pair two of these speakers for a truly grand experience.



- Turn both speakers. Make sure they are not connected to any device.

Note: To disconnect a speaker, simply Long Press the Mode button.

- Double Click Mode button on ONE of the Speakers.

(The Speaker 1 makes a sound and the speaker opens to TWS function)

- After connecting successfully, the speaker makes a single beep sound.
- Turn on your Bluetooth device (Smartphone or Laptop) and connect with "Amkette Boomer FX+."

To discontinue the TWS functionality of the speaker double click Mode button. You will hear a single beep noise when TWS functionality is discontinued.

OPERATING FM RADIO (BUILT- IN ANTENNA)

- Press (MODE button) to switch into FM mode.
- Long Press (Play / Pause button) to automatically search for available channels. When the searching is finished, it will start to play the first channel.
- Long Press (Volume - / + button) to browse and select channels.

AUX PLAYBACK

- Simply insert an AUX cable to enable AUX Playback.
- Single press (Volume - / + button) for Volume Down / Up.
- Single press (Play / Pause button) to Mute the speaker.

USB / MICRO SD PLAYBACK

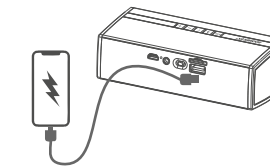
- Simply insert a USB Drive or MICRO SD CARD to start listening.
- Single press (Volume - / + button) for Volume Down / Up
- Long press (Volume - / + button) for Prev / Next track.
- Single press (Play / Pause button) to pause the speaker.

MODE SWITCHING

When the speaker is ON, single-click the Mode Button to switch between Bluetooth, USB, Micro SD Card and AUX modes.

USING SPEAKER AS A POWERBANK

- The speaker can charge your smartphone with a maximum of 1.5A output.
- Simply plug in the charging cable as per the illustration.



TROUBLESHOOTING

- The speaker is not working.**
Check if the speaker is turned ON and the volume is adjusted properly. Make sure that the device is paired / cable connected and the music source volumes is not muted.
- There is no power when the speaker is turned ON.**
Please make sure that the speaker is properly charged before use.
- The speaker is not able to pair with my device.**
Turn OFF the Bluetooth of any other device which is already paired and then retry. Long Press the Mode button to disconnect and re-connect. Restart the devices and speaker, and then retry.
- I am using FM mode but the speaker is unable to receive any Radio channels.**
Make sure you are using the speaker in a place covered by FM signals. You can adjust the speaker in different positions and directions to get a better signal.

SPECIFICATIONS

Bluetooth	v5.0	Output	12W	SNR	≥86dB	Battery Capacity	4000mAh
Input	Aux/USB/Micro SD Card	Drivers	52mm Neodymium	Playback Time	16 Hours	Input Charging Speed	0.2A-0.8A
Frequency Response	150Hz-18KHz	Range	Up to 10m	Charging Time	4-5 Hours	Weight	634g

USB IN USB Flash Drives, up to 32GB, FAT32, NTFS Card IN Micro SD Card, up to 32GB, FAT32, NTFS

WARRANTY STATEMENT

Amkette Boomer FX+ Speaker is backed by a 1 year performance warranty against any manufacturing defects in material or workmanship from the date of original purchase. This warranty entitles the purchaser to get the product repaired or replaced under the following conditions:

- The warranty applies to the original purchaser. Proof of original purchase is required.
- The warranty does not cover the damage caused by misuse, abuse or improper storage.
- In no event shall Amkette be responsible for any direct, incidental, consequential or other damages of any kind.

Please contact our Technical Support Line and/or send the defective product, postage pre-paid, together with the proof of purchase to our Customer Care Service Center to avail warranty service. Return postage will be paid by us.

Customer Care Service Center

Amkette House, C-64/4, Okhla, Phase-II, New Delhi-110020

- 1800-11-9090 (Toll Free) (9:30 AM - 6:00 PM)
- +91 9312691448 (9:30 AM - 6:00 PM)
- techsupport@amkette.in

For Hassle Free Service Register Your Product- www.amkette.com/register