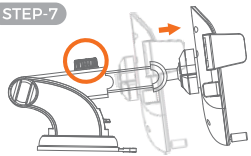


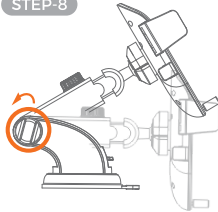
ADJUSTING THE CAR MOUNT

STEP-7



Loosen the **Telescopic Knob** to extend the **Adjustable Telescopic Arm** to the desired length. Tighten the **Telescopic Knob** to fasten in place.

STEP-8



Loosen the **Pivot Knob** to adjust the height of the **Car Mount Cradle**.

STEP-9



Adjust the **Cradle** in any angle with ball pivot joint.

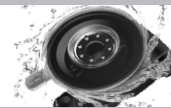
DASHBOARD PAD INSTRUCTIONS

- 1- Remove the Protective Cover (White) and Protective Film (Transparent) from the **Dashboard Pad**
 - 2- Place directly on desired Dashboard location with sticky side facing downwards.
 - 3- Place **Car Mount** over **Dashboard Pad**
- **Dashboard Pad** is recommended to be used on textured surface to provide smooth glass like surface for easy mounting of car mount.
 - Use of **Dashboard Pad** is optional but recommended.



REUSABLE GEL BASED SUCTION CUP

- 1- When dirty, simply wash with warm water
- 2- Let the **Gel Based Suction Cup** air dry to bring back like new



WARRANTY STATEMENT

Amkette's iGrip Telescopic One Touch Car Mount is backed by a 1 Year performance warranty against any manufacturing defects in material or workmanship from the date of original purchase. This warranty entitles the purchaser to get the product repaired or replaced under the following conditions:

- The warranty applies to the original purchaser. Proof of original purchase is required.
- The warranty does not cover the damage caused by misuse, abuse or improper storage.
- In no event shall Amkette be responsible for any direct, incidental, consequential or other damages of any kind.

Please contact our Technical Support Line and/or send the defective product, postage pre-paid, together with the proof of purchase to our Customer Care Service Center to avail warranty service. Return postage will be paid by us.

Customer Care Service Centre:

Amkette House, C-64 / 4, Okhla Phase - II, New Delhi - 110020

☎ 1800-11-9090 (Toll Free) (9:30 AM - 6:00 PM) Mon - Sat 📞 +91 9312691448 (9:30 AM - 6:00 PM) Mon - Sat ✉ techsupport@amkette.in

For Hassle Free Service Register your product online at
www.amkette.com/register

AMKETTE

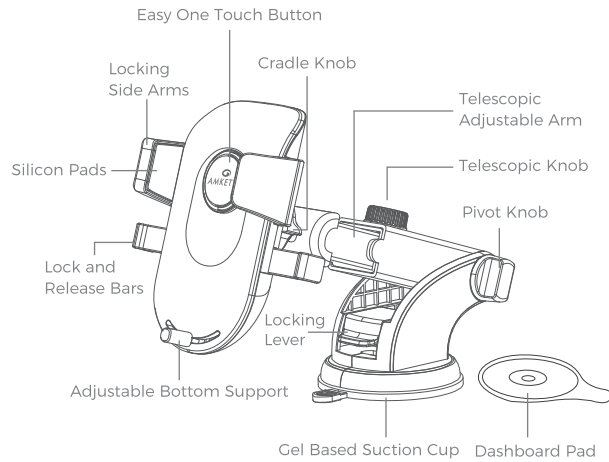
iGrip Telescopic One Touch

Smartphone Car Mount



USER GUIDE

KNOW YOUR iGrip TELESCOPIC ONE TOUCH CAR MOUNT

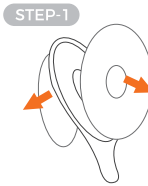


HOW TO ASSEMBLE YOUR CAR MOUNT

- 1 Loosen the **Cradle Knob** behind the mount.
- 2 Insert the **Cradle** to the pivot ball of the base.
- 3 Tighten the **Cradle Knob**.

-2-

INSTALLING THE CAR MOUNT

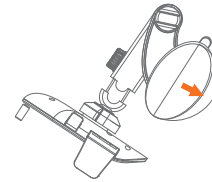


*Dashboard Pad for dashboard use only.
(Ensure the surface is flat and clean)

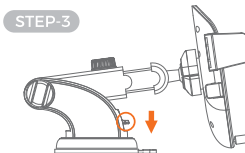
(Optional)

Remove the Protective Cover (White) and the Protective Film (Transparent) from the **Dashboard Pad** and place directly on the desired dashboard location with sticky side

STEP-2



Remove the Protective Film from the **Gel Based Suction Cup**.

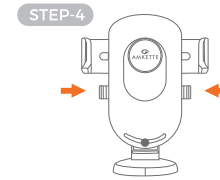


STEP-3

Place the **Gel Based Suction Cup** on the desired surface and pull down the **Locking Lever** to secure the mount.

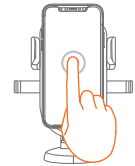
-3-

MOUNTING YOUR PHONE



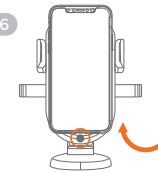
Press the **Lock and Release Bars** into locking position.

STEP-5



Place your device against the **Easy One Touch Button** firmly to activate the one touch locking system.

STEP-6



Adjust **Movable Bottom Support** according to requirement.

-4-