

Please ensure that the batteries in both Keyboard and Mouse are installed properly and the mouse is turned on.
 Ensure that all the batteries are in working condition.
 Plug the Nano USB receiver in a different USB port.
 Restart your PC or Laptop with Nano receiver plugged in the USB port.

Re-pairing Your Combo with the USB Receiver:

Your Keyboard and Mouse work by sending wireless signals to the Nano USB Receiver that came with the combo. Sometimes the Receiver gets unpaired with the Keyboard or Mouse, causing them to stop working.

Insert the Nano USB Receiver into the USB port:

Keyboard: Press **ESC+K** within 10 seconds of Nano Receiver insertion.

Mouse: Press **Right Click and Scroll Wheel Button** together within 10 seconds of Nano Receiver insertion.

Note: Keyboard, Mouse and Receiver should be within 20cm distance. If unsuccessful please retry. Make sure batteries are inserted.

WARRANTY STATEMENT

Amkette's PRIMUS Wireless Desktop Combo is backed by a 1 Year performance warranty against any manufacturing defects in material or workmanship from the date of original purchase. This warranty entitles the purchaser to get the product repaired or replaced under the following conditions:

The warranty applies to the original purchaser. Proof of original purchase is required. The warranty does not cover the damage caused by misuse, abuse or improper storage. In no event shall Amkette be responsible for any direct, incidental, consequential or other damages of any kind.

Please contact our Technical Support Line and/or send the defective product, postage pre-paid, together with the proof of purchase to our Customer Care Service Center to avail warranty service. Return postage will be paid by us.

Customer Care Service Centre:

Amkette House, C-64 / 4, Okhla Phase – II, New Delhi – 110020

+91 9312691448 (9:30 AM - 6:00 PM) Mon – Sat techsupport@amkette.in

For Hassle Free Service Register your product online at www.amkette.com/register



PRIMUS
 Wireless Keyboard and Mouse Combo

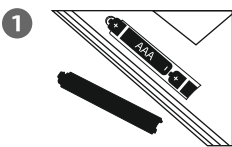
QUICK START GUIDE

WHAT'S IN THE BOX

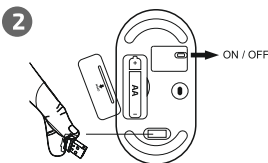
- 1 Wireless Keyboard
- 2 Wireless Mouse
- 3 Nano USB Receiver
- 4 2 AAA, 1 AA Batteries
- 5 Quick Start Guide

PLUG-AND-PLAY INSTALLATION

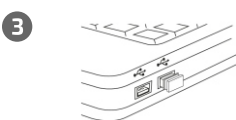
This Primus Wireless Combo is designed for Plug-and-play. Simply insert the batteries into Keyboard and Mouse, retrieve the Nano USB receiver from the bottom of the mouse and plug it into a USB port on your PC / Laptop. That's it!



Install 2x AAA batteries into the Keyboard.



1x AA battery into the mouse. And Turn ON the mouse.



Plug in the USB receiver to a USB port on your PC / System.

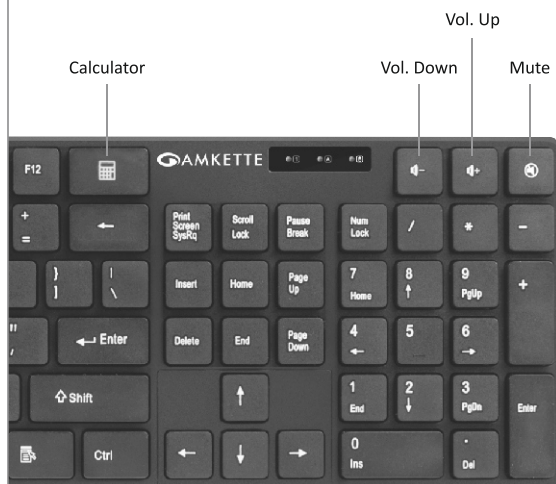
Note: USB Receiver can be found from the bottom of the Mouse

After you install the receiver:

- 1 Wait about 5-10 seconds and the connection will be executed and it's ready for use.
- 2 For better and lag-free performance, make sure that the distance between the wireless device and the receiver do not exceed 10 M.

MULTIMEDIA SHORTCUTS (KEYBOARD ONLY)

This Wireless Multimedia Combo is designed for Instant media access.



POWER SAVING MODE

To extend the standby time and reduce battery consumption, the combo will enter into standby mode after 3 seconds and sleep mode after 5 minutes of inactivity. Click on mouse button to exit from sleep mode.

TECHNICAL SPECIFICATIONS

Technology	: 2.4 GHz	Tracking Surface	: Multi Surface Tracking
Tracking Method	: Optical	Connection	: Plug and Play
Mouse DPI	: 800 – 1200 – 1600	Wireless Range	: up to 10 Meters