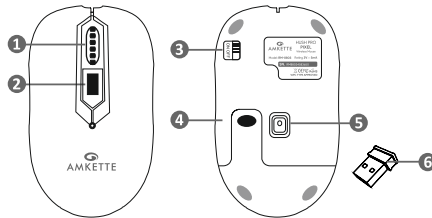




HUSHPRO PIXEL

Ergonomic and Silent Wireless Mouse



- ① Scrolling Wheel ② DPI Switch Button ③ ON/OFF Switch
④ Battery Compartment Lid ⑤ Optical Sensor ⑥ Nano USB Receiver

HOW TO USE



Insert the AA battery into the battery compartment.



Take out the Nano USB Receiver located inside the mouse battery compartment and put it into a vacant USB port of your Laptop/Desktop.



Turn the mouse ON or OFF using the ON-OFF switch provided at the back.

QUICK START GUIDE

POWER SAVING MODE

The Hush Pro PIXEL Wireless Mouse uses the energy efficient 2.4GHz Wireless Radio Frequency and also has a Smart Energy Saving feature. The Mouse automatically enters deep sleep mode, if left idle for a short period of time. The Mouse will get active when a button is clicked. In addition an ON / OFF Switch is provided for total Power Saving when not in use.

DPI SWITCH

Designed to meet the needs of different users Hush Pro PIXEL Mouse comes with a DPI Switch to adjust the sensitivity of the mouse between 3 DPI levels 800/1200/1600 to suit both ordinary as well as gaming needs.

SPECIFICATIONS

Connection Type: 2.4Ghz Wireless, **Wireless Range:** Up to 10m,
Resolution: 800-1200-1600 DPI, **Buttons:** 4 Buttons,
Battery Details: 1xAA

WARRANTY STATEMENT

Amkette's Hush Pro PIXEL Wireless Mouse is backed by a 1 Year performance warranty against any manufacturing defects in material or workmanship from the date of original purchase. This warranty entitles the purchaser to get the product repaired / replaced under the following conditions:

- The warranty applies to the original purchaser. Proof of original purchase is required.
- The warranty does not cover the damage caused by misuse, abuse or improper storage.
- In no event shall Amkette be responsible for any direct, incidental, consequential or other damages of any kind.

Please contact our Technical Support Line and/or send the defective product, postage pre-paid, together with the proof of purchase to our Customer Care Service Center to avail warranty service. Return postage will be paid by us.

CUSTOMER CARE SERVICE CENTER

Amkette House, C-64/4, Okhla, Phase-II, New Delhi-110020



1800-11-9090 (Toll Free)
(9:30 AM - 6:00 PM) Monday - Saturday



+91 9312691448
(9:30 AM - 6:00 PM) Monday - Saturday



techsupport@amkette.in

For Hassle Free Service Register Your Product

www.amkette.com/register