

We are entering the summer months during which all good Texans head to the great indoors.

If you have been watching, the prices of most commodities have been rising since the start of the year. Prices have gone up about fifteen percent. The best we can tell, it has more to do with premiums and surcharges than the actual cost of the material. This means banks have nothing else better to do with their cash and the price of oil affects everything. For stainless the prices historically decline in the summer. We shall see.

Anyway we hope you'll take a long vacation with your family to somewhere that has no bars on your phone. Perhaps you could take Pat Conroy's South of Broad or Mark Frost's The Match: The Day the Game of Golf Changed Forever to the beach.

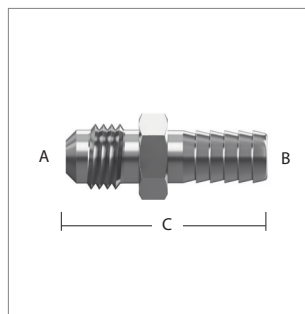
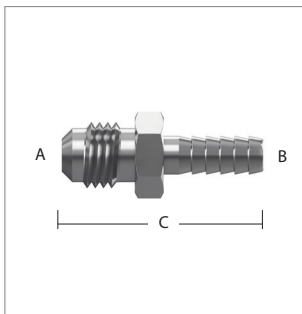
Mark and staff.

There is no such thing as "fun for the whole family." - Jerry Seinfeld

New Fittings for June 2014

BARB TO MALE FLARE (304 Stainless)

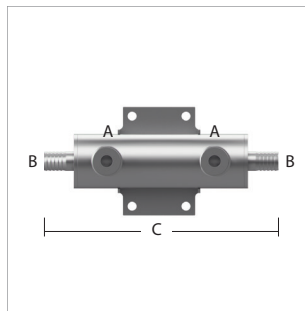
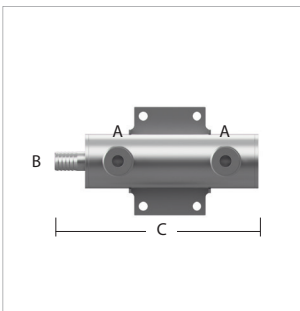
ADAPTERS - STRAIGHT & ELBOWS



SKU	A (Male Flare)	B (Barb)	C (Length)	Material
9016	5/16" (1/2 - 16)	1/4" 7.24 mm	1.52" 38.50 mm	304 Stainless steel
9018	5/16" (1/2 - 16)	3/8" 9.96 mm	1.52" 38.50 mm	304 Stainless steel

2-WAY BEER MANIFOLD - STRAIGHT

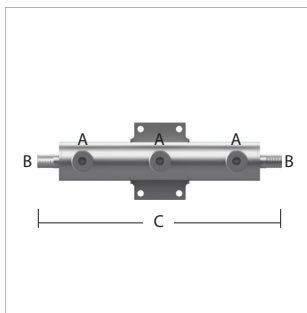
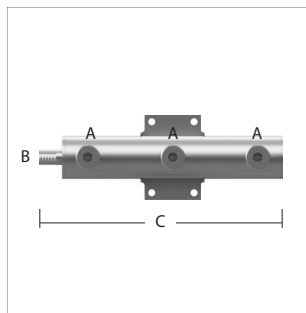
BEER



SKU	A (Threads)	B (Barb)	C (Length)	Material
7472-1	29/32" - 14	1/2" (one) 13.51 mm	5.66" 143.80 mm	Stainless steel
7472-3	29/32" - 14	1/2" (two) 13.51 mm	6.50" 165.10 mm	Stainless steel

3-WAY BEER MANIFOLD - STRAIGHT

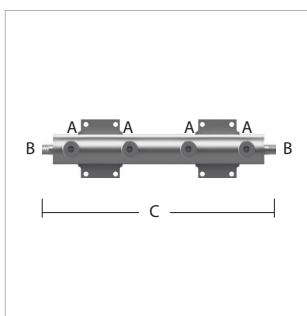
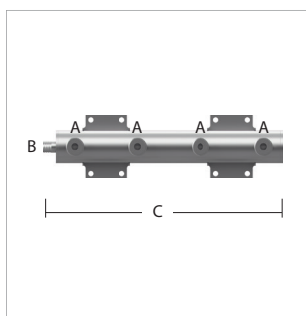
BEER



SKU	A (Threads)	B (Barb)	C (Length)	Material
7491-1	29/32" - 14	1/2" (one) 13.51 mm	8.66" 220.00 mm	Stainless steel
7491-3	29/32" - 14	1/2" (two) 13.51 mm	9.50" 241.30 mm	Stainless steel

4-WAY BEER MANIFOLD - STRAIGHT

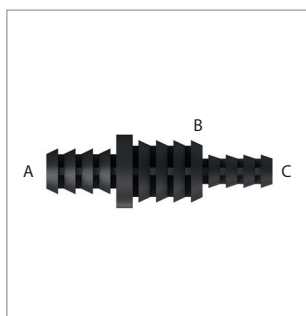
BEER



SKU	A (Threads)	B (Barb)	C (Length)	Material
7492-1	29/32" - 14	1/2" (one) 13.51 mm	11.66" 292.20 mm	Stainless steel
7492-3	29/32" - 14	1/2" (two) 13.51 mm	12.50" 317.50 mm	Stainless steel

UNIVERSAL BARB PLUG

MISC



SKU	A (Barb)	B (Barb)	C (Barb)	Material
9200	3/8" 9.96 mm	1/2" 13.51 mm	1/4" 7.24 mm	FDA Approved Nylon 6