

500W TABLE BLENDER



RATED POWER
500W

GLASS JUG
1.5L

SPEEDS
EIGHT

WEIGHT
2.85KG

Thank you for purchasing this NETTA product.

Please read the user manual carefully before operating this appliance.

We will update our instruction manuals if necessary.

For the most up-to-date user manual, please visit our official website: www.nettdirect.com.

You can download a copy of up-to-date user manuals at any time in electronic format. We do not supply you with a paper-based user manual after each revision.

**Require a larger version of this
Instruction Manual?**

**Please download electronically
from our website and use PDF
reader on your device to enlarge
the text if needed.**

www.nettdirect.com

Safety and Warnings

Intended Use

NETTA Design is for domestic and indoor use only. This product is not intended for use by people who have lack of experience and knowledge or have reduced ability, or sensory and mental capabilities.

Regular Check-Ups

Ensure the power cable and plug are not damaged before plugging into a socket.

Check all the knobs are functioning correctly.

Safety Warnings

- Read all instructions before using this blender.
- Before using, check that the voltage indicated on the product corresponds with the voltage of your electrical outlet.
- Do not let the cord hang on hot surfaces or over the edge of tables or counters.
- Do not operate any appliance with a damaged cord or plug or after the appliance malfunctions.
- If the supply cord is damaged, it must be replaced by the manufacturer.
- Close supervision is necessary when any appliance is used by or near children.
- Avoid contacting the moving parts.
- Keep hands and utensils out of the container whilst blending to reduce the risk of severe injury to persons or damage to the blender. A scraper may be used but must be used only when the blender is not running.

Safety Warnings

- The use of attachments not recommended or sold by manufacturer may cause fire, electric shock, or injury.
- Unplug the appliance from the outlet when it is not in use, before putting on or taking off parts, and before cleaning. To disconnect, turn the control to 'off', then remove the plug from the wall outlet by grabbing the plug – never the cord.
- To reduce the risk of injury, never place the blade assembly on the motor unit without the jar properly attached.
- This appliance should not be used by children. Keep the appliance and its cord out of the reach of children.
- Do not leave the machine on unattended.
- When removing the blender from the motor unit, wait until the blades have completely stopped.
- Always operate the blender with the cover in place.
- Always use the appliance on a secure, dry level surface.
- Never place this appliance on or near a stove/burner or where it could touch a heated appliance.
- Do not use outdoors.
- Do not use appliance for other than its intended use.
- Do not operate without this cover in place.
- Avoid any contact with blades or moveable parts.

Safety Warnings

- Switch off the appliance and disconnect from the power supply before changing accessories or approaching parts that move in use.
- Always disconnect the appliance from the power supply if it is left unattended and before assembling, disassembling, or cleaning.
- This appliance is intended to be used in households and similar applications such as: staff kitchen areas in shops, offices, and other working environments; farmhouses; by clients in hotels, motels, and other residential type environments; bed and breakfast type environments.
- Care shall be taken when handling the sharp cutting blades, emptying the bowl and during cleaning.
- Be careful if hot liquid is poured into the appliance as it can be ejected out of the appliance due to a sudden steaming.

Diagram of the Product

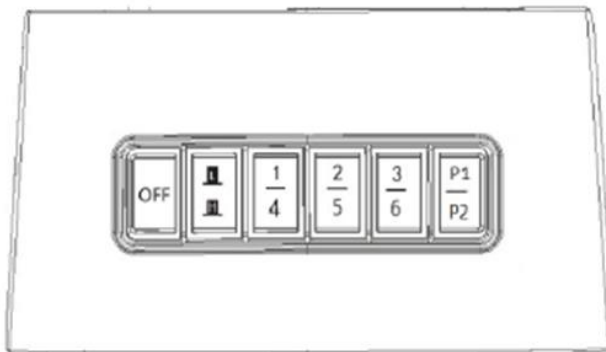
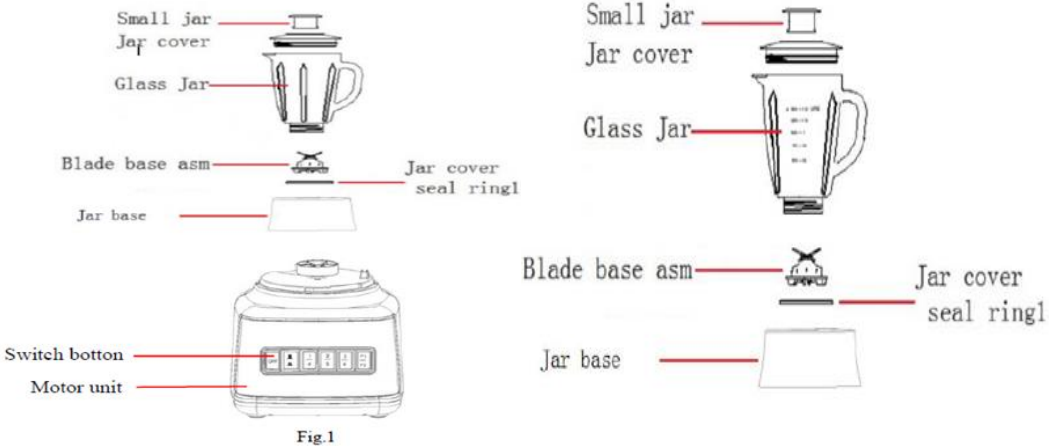


Fig.2

Diagram of the Product



Operating the Product

Before First Use

1. Before the first use, unpack the appliance and place all the parts on a flat surface.
2. The jar assembly (including the measuring cup, lid, jar, blade assembly and jar base) has already been assembled into the motor unit. Disassemble the unit and wash all detachable parts (except the motor unit).
3. Once all pieces have been cleaned and dried thoroughly, reassemble the unit.
4. Place the jar upside down on a flat surface while holding the jar handle. Put the blade assembly back onto the jar base and secure the blade assembly by turning it anti-clockwise until tight (see Fig. 3).

5. Reposition the jar assembly with its opening upwards. Place the measure cup exactly into the hole in the lid and turn the cup clockwise until tight. (see Fig. 4)
6. Finally, place the assembled jar onto the motor unit by aligning the thread on the assembled jar bottom. (see Fig. 5).



Fig.3



Fig.5

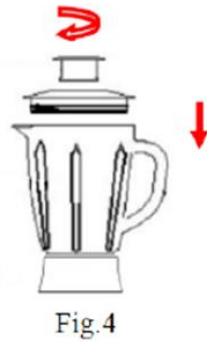


Fig.4

How To Use

1. Peel or core the fruit or vegetables and then dice them into small cubes.
2. Place the food to be blended into the jar (see Fig. 6). Usually, a certain amount of liquid has to be added to facilitate the smooth running of the appliance. The proportion of food and water should be 2:3. The amount of mixture should not exceed the max levels as indicated on the jar.

3. When attempting to blend hard fruit or vegetables, cut the pieces smaller to aid blending. Ensure the dial is set to the highest speed before commencing. If the speed is set too low, the motor will get damaged due to insufficient torque.
4. When the motor speed is too slow for the product that it is attempting to blend, set it to a higher speed in order to increase the rotation speed or switch the unit off to prevent motor damage.
5. Never use boiling liquids or run the appliance on empty.
6. Fix the lid onto the jar. Ensure the measuring cup is in place.
7. Plug the power cord into a standard wall outlet.
8. Choose the appropriate speed setting for your task.
9. For quick or delicate blending tasks, press the 'P2' button and hold for a few seconds before releasing. When released, the device will switch to 'off'. Do this several times until the consistency you want is achieved.
10. If you want to add ingredients while the blender is working, remove the measuring cup and place through the lid opening (see Fig. 7).
11. When crushing ice or hard food, keep one hand firmly on the lid.
12. When the consistency you desire is achieved, turn the device off. Note: For each use, the consecutive operation time should not exceed 2 minutes. At least 10 minutes rest time must be maintained between two continuous cycles. Let the unit cool to room temperature before performing the next operation cycle.

13. If you want to stop the appliance during operation, press the 'off' button at any time.

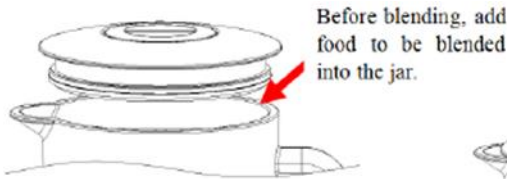


Fig.6

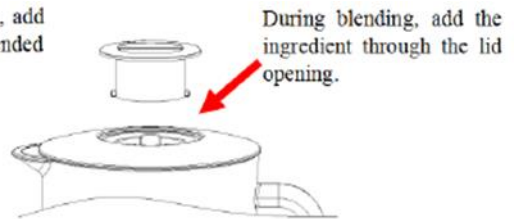


Fig.7

Important Operating Tips

- For the best circulation of foods that are to be blended with liquid, pour the liquid into the jar first and then add solids.
- Some of the tasks that cannot be performed efficiently with a blender are: beating egg whites, whipping cream, mashing potatoes, grinding meat, mixing dough, and extracting juice from fruit and vegetables.
- The following items should never be placed in the unit as they may cause damage: bones, large piece of frozen food or tough foods such as turnips.
- To crush ice, add up to six cubes of ice. If more ice is needed, remove the measuring cup, and add cubes one by one through the lid opening.

Cleaning, Maintenance and Storage

- Before cleaning, always unplug the blender.
- Always wash immediately after use for easier cleaning. Do not let food dry on the jar assembly as this will make cleaning difficult.
- Pour a little warm soapy water into the jar and set the device to 'P1' for a few seconds and then empty the jar.
- Dismantle all the detachable parts. Lift the jar assembly off the motor unit. To detach the blade assembly, turn it clockwise from the jar base and blade assembling (see Fig. 8).

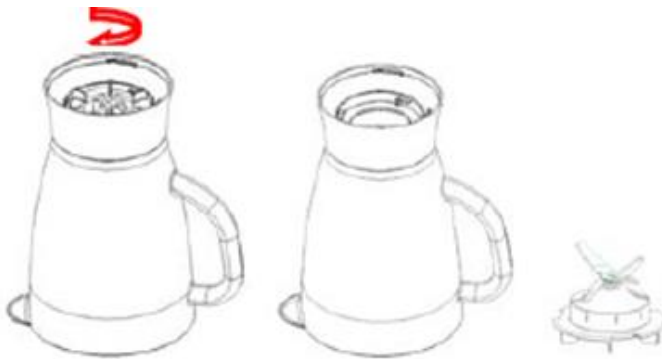


Fig.8

- Rinse the measuring cup, lid, jar and blade assembly with your hands or dishwasher and then dry. The components are dishwasher safe, but the temperature setting should not exceed 70°C.

- Brush the blade clean using warm soapy water and then rinse thoroughly under the tap. Do not touch the sharp blades and handle them carefully. Do not immerse the blade assembly in water for long periods. Leave to dry upside down away from children.
- Wipe the motor unit with a damp cloth and dry thoroughly. Remove stubborn spots by rubbing with a non-abrasive cleaner. If liquids spill into the motor unit, unplug the appliance and then wipe with a damp cloth and dry thoroughly.
- Do not immerse the motor unit in liquid to prevent the risk of electric shock
- Do not use rough scouring pads or any abrasive cleaners on any part of this blender.

Spare Parts and Repairs

To order replacement parts, please go to www.nettadirect.com/parts.

You will need PDC information from your product, user manual or carton box. Alternatively, go to our website and use search bar to find the parts available.

You can also find this code on the [back of this User Manual](#).

For our Repair Service, please contact our customer support with email on support@nettadirect.com they will provide with more details of repair service with NETTA.

Disposal of Product

IMPORTANT INFORMATION FOR CORRECT DISPOSAL OF THE PRODUCT IN ACCORDANCE WITH EC DIRECTIVE 2002/96/EC.

DISPOSAL:

Please dispose of this product responsibly. This item cannot be disposed of with general waste. Please contact your local council authority for more information on how to dispose this product. If this product is disposed of with general waste, it will end up in a landfill and will leak hazardous substances into the groundwater – effecting our food chain.



Your Warranty

If you purchased with NETTADIRECT, or one of our authorised resellers, you will automatically enrol your warranty for 1 (ONE) year.

You do not need to register again for your warranty. All warranties will be carried out to our terms and conditions including warranty conditions you will find out from our website at www.nettadirect.com.

Copyrights

NETTA and its logo including images and contents in this manual and website is copyrighted. All intellectual property rights belong to NETTA owner CONSUMABLE DIRECT LIMITED.

ANY UNAUTHORISED USE, MODIFICATION or DISTRIBUTION of the NETTA logo, website image, and its contents (from website, manuals) will violate worldwide copyright, trademark, and associated laws.

We reserve the right to proceed with lawsuits to anyone who is found breaching our copyrights policy. For more details, please check our website copyright policy for more information.

Product Dependency Code (PDC)

Your PDC is below:

PDC: BL1056MD-CB
SKU: 103461

NETTA is a registered trademark of CONSUMABLE DIRECT LIMITED.
Product Produced for CONSUMABLE DIRECT LIMITED M30 0QF U.K.