

45M ROTARY WASHING LINE



EN USER INSTRUCTION & OPERATION MANUAL
ES MANUAL DE INSTRUCCIONES Y OPERACIONES PARA EL
USUARIO
DE BENUTZERANLEITUNG & BETRIEBSANLEITUNG
FR MANUEL D'UTILISATION ET D'UTILISATION
IT ISTRUZIONI PER L'USO E MANUALE OPERATIVO

EN

Thank you for purchasing this NETTA product.

Please read the user manual carefully before operating this appliance.

We will update our instruction manuals if necessary.

For the most up-to-date user manual, please visit our official website: www.nettadirect.com.

You can download a copy of up to date user manuals at any time in electronic format. We do not supply you with a paper-based user manual after each revision.

Require a larger version of this Instruction Manual?

Please download electronically
from our website and use PDF
reader on your device to enlarge
the text if needed.

www.nettadirect.com

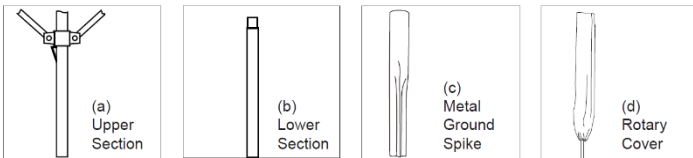
Safety and Warnings

Intended Use

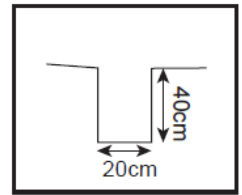
This NETTA product is designed for private outdoor use only. It is not for use in public parks, sports grounds, agriculture, or forestry. Failure to use this product as intended will void the warranty.

Directions for Use

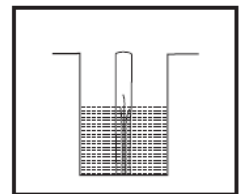
Parts Included



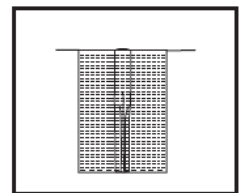
1. Carefully remove all packaging.
2. Please remove protective cap on upper section (a) before assembly. Lower section (b) is to be inserted into upper section (a).
3. Establish a suitable location for the ailer. Please ensure there is enough room for it to rotate freely when fully open (2.07 meters diameter).
4. Installing the ground spike – Note; Ensure you concrete just the ground spike before assembling any other parts.



①



②



③

Permanent Fixing

- a. Dig a hole 20cm square and 40cm deep.
- b. Partly fill the hole with concrete and place the spike upright in the centre.
- c. Complete filling with concrete and ensure when installing the ground spike that it is firmly located in the vertical position.
- d. Allow 48 hours for setting before use.

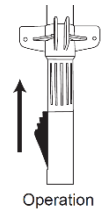
Directions for Use (continued)

Non-Permanent Fixing

Using a piece of wood to protect the top of the spike, strike it with a hammer driving your spike into the ground, stopping occasionally to check the spike always maintains a vertical position. Continue driving your spike into the ground until the top of the spike is at ground level

Operation

4 stage locking system - push progressively upwards for warm weather locking positions.



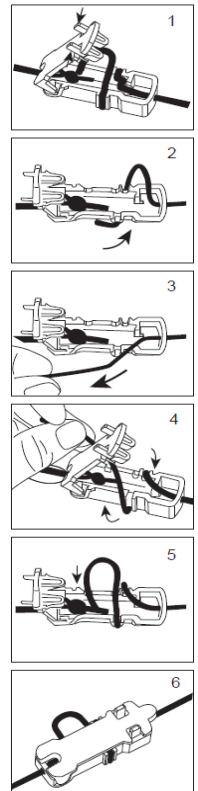
Line Tension Clip

Occasionally the line on your rotary ailer might sag, this can be due to a number of factors; weather conditions (lines are more prone to sagging in warmer weather), tangled lines, unevenly spaced lines and the rotary operation not being locked at its highest point. Before you use the line tension clip please ensure you have eliminated all the above factors.

Warning: the line tension clip is there to be used as a last resort to re-tension your rotary washing line.

- 1) Pinch where arrows indicate and open
- 2) Unwind the loose line end (warning - do not untie the knotted line end)
- 3) Pull the loose line end until it is at your desired tension
- 4) Rewind the loose line end
- 5) Secure by looping end of line back into the clip
- 6) Close clip

Your line should now be re-tensioned



Cleaning, Maintenance and Storage

- When not in use we recommend that the ailer is covered and securely tied.
- If removing from the ground spike for storage, ensure that the ailer is covered and kept out of the reach of children.
- **WARNING** - Do not use this rotary ailer in adverse weather conditions as this will void your guarantee.
- Please use the Spike or Socket which is provided with your rotary - if you do not this could invalidate your guarantee.
- Maximum loading is 28KG evenly spaced.

Spare Parts and Repairs

To order replacement parts, please go to www.nettadirect.com/parts.

You will need PDC information from your product, user manual or carton box. Alternatively, go to our website and use the search bar to find the parts available.

You can also find this code on the [back of this User Manual](#).

For our Repair Service, please contact our customer support via email at support@nettadirect.com. They will provide you with more details of the repair service offered by NETTA.

Disposal of Product

IMPORTANT INFORMATION FOR CORRECT DISPOSAL OF THE PRODUCT IN ACCORDANCE WITH EC DIRECTIVE 2002/96/EC.

DISPOSAL:

Please dispose of this product responsibly. This item cannot be disposed of in general waste. Please contact your local council authority for more information on how to dispose this product. If this product is disposed of with general waste, it will end up in a landfill and will leak hazardous substances into the groundwater – effecting our food chain.



Your Warranty

If you purchased with NETTADIRECT, or one of our authorised resellers, you will automatically enrol your warranty for 1 (ONE) year. You do not need to register again for your warranty. All warranties will be carried out our terms and conditions, including warranty conditions, which you can find out from our website at www.nettadirect.com.

Copyrights

NETTA and its logo including images and contents in this manual and website is copyrighted. All intellectual property rights belong to NETTA owner CONSUMABLE DIRECT LIMITED.

ANY UNAUTHORISED USE, MODIFICATION or DISTRIBUTION of the NETTA logo, website image, and its contents (from website, manuals) will violate worldwide copyright, trademark and associated laws.

We reserve the right to proceed with lawsuits to anyone who is found breaching our copyrights policy. For more details, please check our website copyright policy for more information.

Product Dependency Code (PDC)

Your PDC is below:

PDC: LYQ205-45S-1.2M+CDG32-T+LYQT104
SKU: 103571 / 103570 / 104085

NETTA is a registered trademark of CONSUMABLE DIRECT LIMITED.
Product Produced for CONSUMABLE DIRECT LIMITED M30 0QF U.K.