

42 INCH TOWER FAN



**RATED
POWER**
45W

TIMER
7 HOURS

OSCILLATION
60 DEGREES

**SPEED
SETTINGS**
THREE

Thank you for purchasing this NETTA product.

Please read the user manual carefully before operating this appliance.

We will update our instruction manuals if necessary.

For the most up-to-date user manual, please visit our official website: www.nettadirect.com.

You can download a copy of up to date user manuals at any time in electronic format. We do not supply you with a paper-based user manual after each revision.

Require a larger version of this Instruction Manual?

Please download electronically from our website and use PDF reader on your device to enlarge the text if needed.

www.nettadirect.com

SAFETY & WARNINGS...

INTENDED USE

NETTA Design is for domestic and indoor use only. This product is not intended for use by people who have lack of experience and knowledge or have reduced ability, or sensory and mental capabilities.

REGULAR CHECKUPS

Ensure that the power plug and cable are not damaged before using this product.

GENERAL CAUTIONS

- A loose fit between the AC outlet (receptacle) and plug may cause overheating. Contact a qualified electrician to replace a loose or worn outlet.
- Only use on 220-240V AC, 50Hz power supply.
- If the supply cord is damaged, it must be replaced by the manufacturer.
- Cleaning and user maintenance shall not be made by children without supervision.
- Use this fan only as described in this manual.
- The product is intended for household use only and not for commercial, industrial, or outdoor use.
- Close supervision is necessary when the appliance is used by or near children.
- To disconnect the fan, first turn the unit off, grip the plug and pull it from the wall outlet. Never pull the plug by the cord.

RISK OF PERSONAL INJURY

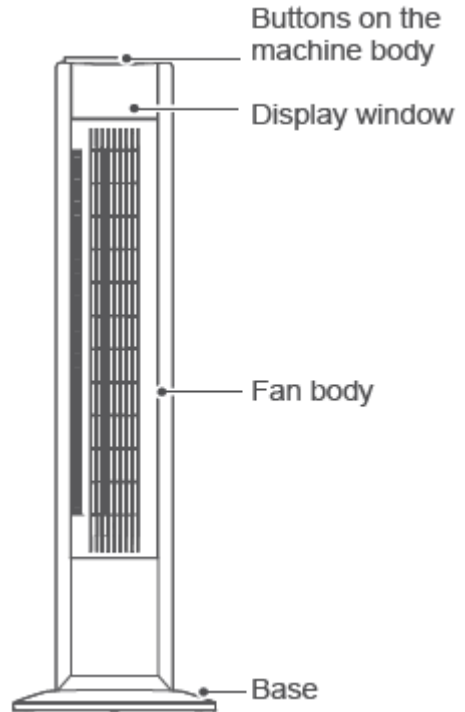
- To protect against electric shock, do not place fan on windowsill or allow it to come into any contact with water.
- Ensure that the fan is switched off from the supply mains before removing the guard.
- To reduce the risk of shock, this plug is intended to fit the outlet. If the plug does not fit fully in the outlet, contact a qualified electrician.
- Turn off and unplug the fan from the outlet when not in use, when moving the fan from one location to another, and before cleaning.
- Do not operate the fan in the presence of explosives and/or flammable fumes.
- Do not place the fan or any parts near an open flame, cookers, or other heating appliances.
- Do not operate fan with a damaged cord or plug, or if the product malfunctions, or if dropped or damaged in any manner.
- Avoid contact with moving fan parts.
- The use of attachments not recommended by the manufacturer may be hazardous.
- Place the fan on a dry and level surface.
- Do not hang or mount the fan on a wall or ceiling.
- Do not operate if the fan housing is damaged.

ASSEMBLY INSTRUCTIONS:

WARNING! Do not use this fan before assembling the base.

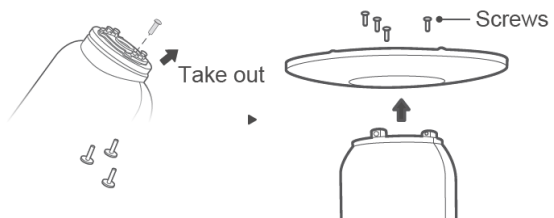
Note: Please place the machine on the package foam or other soft surfaces and invert it to avoid scratch mark when install the base.

1. Take out the two parts of the base from packing box. Then, align the centres of the two parts of the base and place them in a crossed form. Rotate one of the two bases to align its hole site and make it stuck correctly.



2. Unload four screws from the machine body prior to installation of the base on the machine body when combination lines of the base and the fan body are aligned accurately.

Afterwards, fix and tighten the base and the fan body by means of screws.



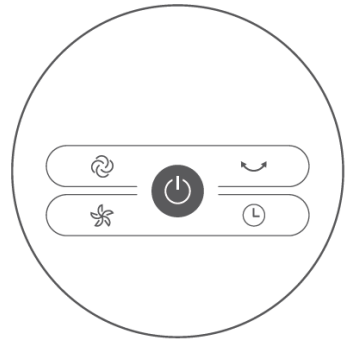
USING THE PRODUCT:

Buttons on the Machine:

Press buttons on the machine body to start corresponding functions.

Press "Fan speed" directly to adjust the speed from speed 1 to 3.

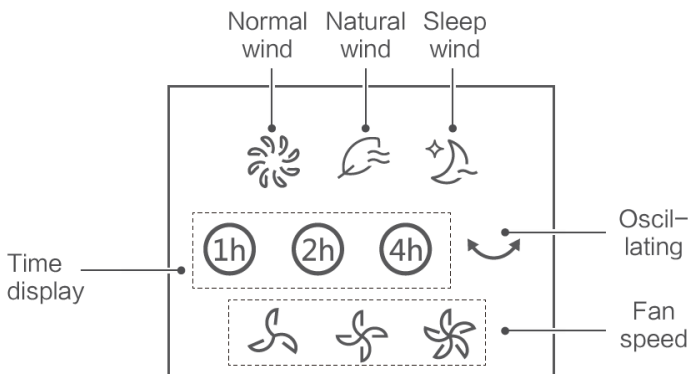
Press "Timing" to adjust the time:
Set timed power off between 1 hour and 7 hours in starting up status; Set appointed starting up between 1 hour and 7 hours in standby status (power on but without starting up).



Press "Wind type" to adjust wind blowing mode (Normal wind, sleep wind, natural wind).





Press "Oscillating" to start or stop shaking of the fan head.

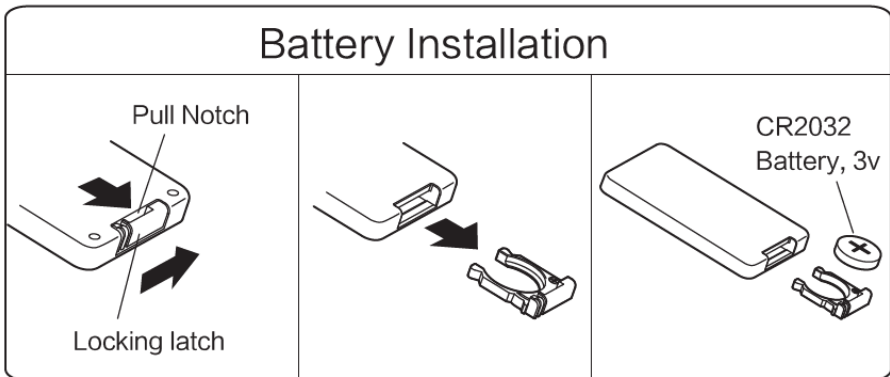
Display Panel



Remote Control Operation



	Start up/Standby key
	Function key
+	“+” key
-	“-” key
	Timer key
	Swing key



It uses one button battery of type "CR2032".

1. Install the battery with positive side facing up.
2. Effective Range of Remote Control: within 5m distance and 30-degree deflection in front of product.

CLEANING AND MAINTENANCE

Maintenance

The fan requires little maintenance. Do not try to fix it by yourself.

Refer it to qualified service personnel if service is needed.

1. Before cleaning and assembling, the fan must be unplugged.
2. To ensure adequate air circulation to the motor, keep the vents at the rear of the motor free of dust. Do not disassemble the fan to remove dust.
3. Please wipe the exterior parts with a soft, damp cloth soaked a mild detergent.
4. Do not use any abrasive detergent or solvents to avoid scratching the surface. Do not use gasoline, thinner, etc.
5. Do not allow water or any other liquid to enter the motor housing or interior parts.

Cleaning

1. Be sure to unplug from the electrical supply source before cleaning.
2. Plastic parts should be cleaned with a soft cloth moisten with mild soap. Thoroughly remove soap film with dry cloth.

If there is no operation within 60 seconds, the LED screen display will be turned off (the actual output remains the same).

SPARE PARTS/REPAIR

To order replacement parts, please go to www.nettadirect.com/parts.

You will need PDC information from your product, user manual or carton box. Alternatively, go to our website and use search bar to find the parts available.

You can also find this code on the [back of this User Manual](#).

For our Repair Service, please contact our customer support with email on support@nettadirect.com they will provide with more details of repair service with NETTA.

DISPOSAL OF PRODUCT

IMPORTANT INFORMATION FOR CORRECT DISPOSAL OF THE PRODUCT IN ACCORDANCE WITH EC DIRECTIVE 2002/96/EC.

DISPOSAL:

Please dispose of this product responsibly. This item cannot be disposed of with general waste. Please contact your local council authority for more information on how to dispose this product. If this product is disposed of with general waste, it will end up in a landfill and will leak hazardous substances into the groundwater – effecting our food chain.



YOUR WARRANTY

If you purchased with NETTADIRECT, or one of our authorised resellers, you will automatically enrol your warranty for 1 (ONE) year. You do not need to register again for your warranty. All warranties will be carried out to our terms and conditions including warranty conditions which you can find out from our website at www.nettadirect.com.

COPYRIGHTS

NETTA and its logo including images and contents in this manual and website is copyrighted. All intellectual property rights belong to NETTA owner CONSUMABLE DIRECT LIMITED.

ANY UNAUTHORISED USE, MODIFICATION or DISTRIBUTION of the NETTA logo, website image, and its contents (from website, manuals) will violate worldwide copyright, trademark, and associated laws.

We reserve the right to proceed with lawsuits to anyone who is found breaching our copyrights policy. For more details, please check our website copyright policy for more information.

PRODUCT DEPENDENCY CODE (PDC)

Your PDC is below:

PDC: FZ10-19BRA
SKU: 103977

NETTA is a registered trademark of CONSUMABLE DIRECT LIMITED.
Product Produced for CONSUMABLE DIRECT LIMITED M30 0QF U.K.