

2500W OIL HEATER



**RATED
POWER**
2500W

FINS
11

TIMER
24 HOUR

**POWER
SETTINGS**
3

Thank you for purchasing this NETTA product.

Please read the user manual carefully before operating this appliance.

We will update our instruction manuals if necessary.

For the most up-to-date user manual, please visit our official website: www.nettdirect.com.

You can download a copy of up-to-date user manuals at any time in electronic format. We do not supply you with a paper-based user manual after each revision.

**Require a larger version of this
Instruction Manual?**

**Please download electronically
from our website and use PDF
reader on your device to enlarge
the text if needed.**

www.nettdirect.com

Safety and Warnings

Intended Use

NETTA Design is for domestic and indoor use only. This product is not intended for use by people who have lack of experience and knowledge or have reduced ability, or sensory and mental capabilities.

Regular Check-Ups

Ensure the power cable and plug are not damaged before plugging into a socket.

Check all the knobs are functioning correctly.

General Warnings

When using this appliance, basic safety precautions should always be followed:

- Please read these instructions carefully before use.
- Ensure the plug is connected to the mains socket securely.
- Before connecting the appliance to power, ensure that the voltage indicated on the rating label corresponds to the mains voltage of your home.
- Always unplug the appliance when it is not in use.
- Keep this appliance away from water or moisture.
- Do not operate this appliance with a damaged power cord.
- Do not attempt to repair this appliance yourself. If the heater malfunctions, please contact your supplier.
- Close supervision is required when using the appliance near children.
- Always remove the plug from the power supply before cleaning the appliance.

General Warnings

- When unplugging this appliance, ensure you grasp the plug and pull from the socket. Do not pull on the power cord.
- Do not use outside.
- Do not insert or remove the plug from the socket with wet hands as this may cause an electric shock.
- The oil heater must only be used in the upright position.
- Keep flammable objects away from this appliance.
- Place the oil heater on the floor at least 90cm away from the wall and any other objects such as furniture, curtains or plants.
- The surface of this appliance can get hot. When moving the appliance only use the handles.
- Do not cover the appliance whilst it is in use.
- Do not use this appliance if it has been dropped or damaged.

Diagram

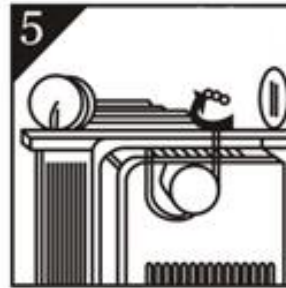
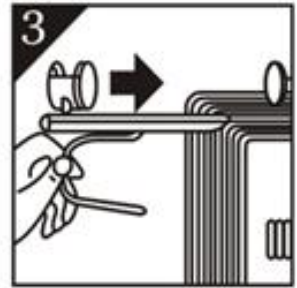
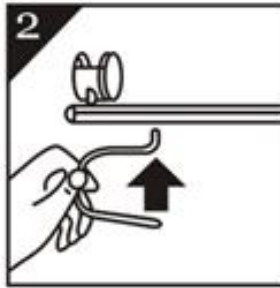
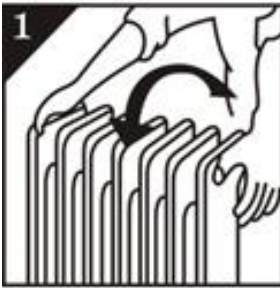
- A. Handle
- B. Adjustable Thermostat
- C. Indication Light
- D. Power Switch
- E. Timer
- F. Cable Holder
- G. Castor base
- H. Castor Wheels



Assembling the Product

1. Turn the radiator upside-down on a scratch-free and stable surface to prevent damage to the paint finish or your flooring surface. (Fig 1)
2. Fit the castor assemblies onto the radiator by placing the U-shaped bolts between the outermost fins on each side of the radiator. (Fig 2 – 4)
3. Securely fasten the castor assemblies onto the radiator by screwing the wing nuts into the bolts. (Fig 5)

WARNING: Only operate the radiator in a normal upright position with the wheels attached to the bottom. Any other position could create a hazardous situation.



Operating the Product

- Place the product in an upright position on a flat, steady and heat-resistant surface. Make sure there is nothing flammable or heat sensitive within 1 metre. Operating the product in another other position may cause a hazard.
- Turn the thermostat knob anti-clockwise to the minimum position and set the power switch to “0”. Then insert the plug into a suitable wall outlet.
- The heater is suitable for operation on an A.C. electricity supply having the same voltage as shown on its rating label.

- Turn the power switch from “0” to either “●” (Minimum heating), “●●” (Medium heating) or “●●●” (Maximum heating).
- Turn the thermostat knob clockwise to the maximum position. When the room temperature rises to a comfortable level, slowly turn thermostat anti-clockwise until the indicator light just goes out.
- To adjust the room temperature, turn the thermostat clockwise to raise the temperature, or anti-clockwise to lower it. The heater will keep the room temperature at the desired level.
- To turn off the heater, set the power switch to “0” position. Unplug the product from the electrical outlet when it is left unattended or is not in use.

Timer Setting Operation

- The heater comes fitted with a 24-hour timer.
- Each segment is 15 minutes.
- First, set the current time by rotating the timer dial clockwise until the arrow points to the correct time.
- Next, set the times at which you want the heater to turn ON by pushing the relevant sections outwards (towards the outside of the dial).
- For all other times (when you want the heater to be off), make sure the corresponding sections are pushed inwards (towards the centre of the dial).

Tip-Over Protection

- This heater is protected with a safety switch that turns off the appliance automatically when the heater falls over or is at an excessive angle from the horizontal position. This helps prevent accidents. The heater will resume operation when it is placed upright again.

Overheat Protection

- This heater is protected with an overheat protection system that switches off the appliance automatically in case of severe overheating. In this case, unplug the appliance, wait 30 minutes for it to cool and remove any possible causes of overheating, e.g., something covering the heater.
- Check for damage to the appliance, the cord, and the plug. If there is no damage, plug the unit back in and switch it on as described above. If the heater still does not turn on, please contact your supplier for assistance.

Cleaning, Maintenance and Storage

- The oil heater should be cleaned regularly to remove dust on the surface of the fins.
- Unplug from the power supply and allow to cool down before attempting to clean the appliance.
- Clean only using with a soft damp cloth. Do not use detergent or abrasives.
- Do not scrape the surfaces of the fins with sharp hard tools. This will damage the paintwork and potentially cause rust.

Storage

- Ensure the appliance is completely cool before storing.
- Roll up the power cord in the supports when the heater is not in use.
- Store the appliance in a cool and dry place.

Spare Parts and Repairs

To order replacement parts, please go to www.nettadirect.com/parts.

You will need PDC information from your product, user manual or carton box. Alternatively, go to our website and use search bar to find the parts available.

You can also find this code on the [back of this User Manual](#).

For our Repair Service, please contact our customer support with email on support@nettadirect.com they will provide with more details of repair service with NETTA.

Disposal of Product

IMPORTANT INFORMATION FOR CORRECT DISPOSAL OF THE PRODUCT IN ACCORDANCE WITH EC DIRECTIVE 2002/96/EC.

DISPOSAL:

Please dispose of this product responsibly. This item cannot be disposed of with general waste. Please contact your local council authority for more information on how to dispose this product. If this product is disposed of with general waste, it will end up in a landfill and will leak hazardous substances into the groundwater – affecting our food chain.



Your Warranty

If you purchased with NETTADIRECT, or one of our authorised resellers, you will automatically enrol your warranty for 1 (ONE) year. You do not need to register again for your warranty. All warranties will be carried out to our terms and conditions including warranty conditions you will find out from our website at www.nettadirect.com.

Copyrights

NETTA and its logo including images and contents in this manual and website is copyrighted. All intellectual property rights belong to NETTA owner CONSUMABLE DIRECT LIMITED.

ANY UNAUTHORISED USE, MODIFICATION or DISTRIBUTION of the NETTA logo, website image, and its contents (from website, manuals) will violate worldwide copyright, trademark and associated laws.

We reserve the right to proceed with lawsuits to anyone who is found breaching our copyrights policy. For more details, please check our website copyright policy for more information.

Product Dependency Code (PDC)

Your PDC is below:

PDC: LH02T-1125 with timer
SKU: 103947

NETTA is a registered trademark of CONSUMABLE DIRECT LIMITED.
Product Produced for CONSUMABLE DIRECT LIMITED M30 0QF U.K.