

12V WEED SWEEPER



BRUSH SIZE
100MM

BLADE SPEED
200 RPM

CHARGE TIME
4 HOURS

SOUND LEVEL
88dB

Thank you for purchasing this NETTA product.

Please read the user manual carefully before operating this appliance.

We will update our instruction manuals if necessary.

For the most up-to-date user manual, please visit our official website:
www.nettdirect.com.

You can download a copy of up to date user manuals at any time in electronic format. We do not supply you with a paper-based user manual after each revision.

Require a larger version of this Instruction Manual?

Please download electronically from
our website and use PDF reader on
your device to enlarge the text if
needed.

www.nettdirect.com

SAFETY & WARNINGS

INTENDED USE

NETTA Design is for domestic and indoor use only. This product is not intended for use by people who have lack of experience and knowledge or have reduced ability, or sensory and metal capabilities. Keep supervised when groups of people use this item.

REGULAR CHECKUPS

- Check cables every time before plugging into a socket, make sure power cables are not burst or snapped and that the power-plug has no damage.
- Check all the knobs are functioning correctly.

GENERAL CAUTIONS

- Always follow this instruction manual and go through all the safety checks.
- This is not toy - do not let children play with it.
- **DO NOT** modify this product in any way.
- Keep work areas clean and well lit.
- Do not operate tools in explosive atmospheres.
- Before using an electric powered appliance, check the rating label on back of the machine.
- Always connect the device to a socket with Residual Current Device (RCD) fitted with your home circuits.
- If you are unsure, please seek a certified election for advice.
- The appliance must not be immersed in liquid.
- Do not use power tools in wet or damp conditions.
- Do not overload your power tools. Match each tool to the task.
- Do not use any power tool if the on/off switch is damaged.
- Check that the moving parts of your tool operate smoothly and are not cracked or damaged.
- **DO NOT** use the appliance other than for the intended use.
- Use personal protective equipment. Always use eye protection.
- Use ear protection.
- Wear soft gloves when using this tool to prevent discomfort.
- Hold the power tool firmly to reduce the vibration levels.
- Ensure the switch is in the off position before connecting to a power source, picking up or carrying the tool.

RISK OF PERSONAL INJURY

- Do not wrap the device in a cloth or other material to suppress noise. This will hinder the proper ventilation of the device. This could ignite a fire and cause burns.
- Remove any adjusting keys or wrenches before turning the tool on.
- Do not overreach. Keep proper balance at all times.
- Do not wear loose clothing or jewellery.
- Take a break if you feel vibration-related discomfort.
- DO NOT operate any appliance with a damaged cord or plug or after the appliance malfunctions or is dropped or damaged in any manner. Return appliance to the nearest authorized service facility for examination, repair or electrical or mechanical adjustment.
- If the supply cord is damaged it must be replaced by the manufacturer or an authorized service agent or a qualified technician in order to avoid a hazard.
- The use of accessories is not recommended by the manufacturer as they may cause injuries to persons.
- Do not let the cord hang over the edge of a table or counter or touch a hot surface.
- Do not place on or near a hot gas or electric burner or in a heated oven.
- Unplug from outlet when not in use and before cleaning.
- Always inspect the area where the weed sweeper is to be used. Remove all objects (i.e., stones, sticks, wires, and other foreign materials) that could be thrown by the blades or cause the operator to trip.
- Thrown objects can cause serious injury to the eyes and exposed body. Always wear safety glasses or eye shields during operation and while making an adjustment or repair.
- Always operate the weed sweeper wearing adequate garments. Do not wear jewellery or other loose clothing, which could become entangled in moving parts. Wear non-slip footwear to ensure proper footing.
- Inspect the weed sweeper for worn, missing, or damaged parts and safety labels. See maintenance section for detailed instructions.
- Do not operate the machine while under the influence of alcohol or drugs.

- Keep all safety devices in place and in proper working order.
- Do not operate with missing or damaged components.
- Ensure the controls (start/stop) function properly before starting.
- Hold onto the tiller with both hands during operation. Ensure the grips are dry.
- Contact with rotating parts can amputate hands and feet.
- Keep hands and feet away from all rotating parts.
- Only operate the weed sweeper when there is good visibility or light and dry conditions. Always watch your footing and keep a firm hold on the grips. Walk; don't run!
- Do not operate the tiller on slippery surfaces. Check your footing during use.
- Exercise caution when changing direction and operating the tool on slopes. Always keep feet and legs a safe distance away from the machine. Look for hidden obstacles or hazards.
- If the weed sweeper should start to vibrate abnormally, stop the machine and inspect thoroughly for damage.
- Turn the machine OFF when moving to a new work area.
- Allow the blades to completely stop rotating before transporting the unit.
- Do not use in rain or wet conditions.
- Always turn the machine OFF and remove the battery when stopping work or when changing work areas. Never leave the machine running when unattended.
- The motor housing remains hot for a short period after the machine is turned OFF. Allow the motor housing to cool completely before touching or storing near combustible material.
- Avoid dangerous environments – Do not charge the battery pack in rain, snow or in damp or wet locations. Do not use the battery pack or charger in the presence of explosive atmospheres (gaseous fumes, dust or flammable materials) because sparks may be generated when inserting or removing the battery pack, which could lead to a fire.
- Charge in a well-ventilated area – Do not block the charger vents. Keep them clear to allow for proper ventilation. Do not allow smoking or open flames near a charging battery pack. Vented gases may explode. NOTE: The safe temperature range for the battery is -4°F (-20°C) to 113°F (45°C). Do not charge the battery outside in freezing weather; charge it at room temperature.

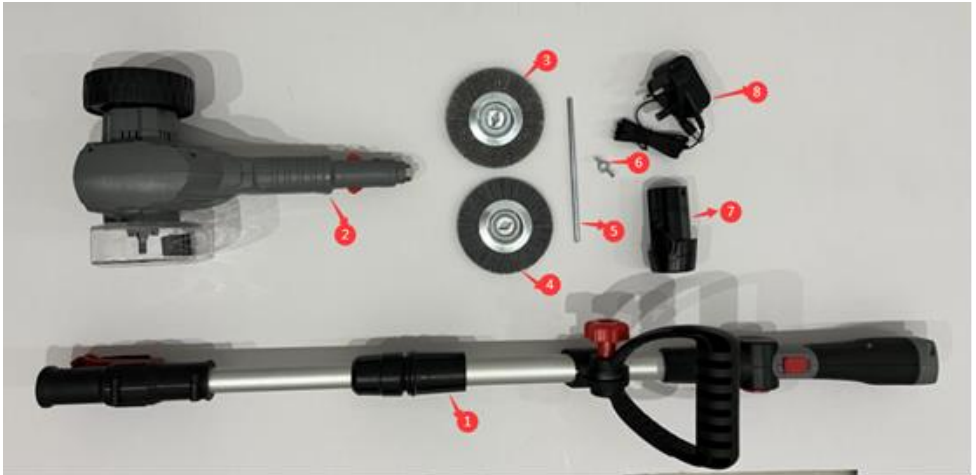
- Maintain charger cord – When unplugging the charger, pull the plug, not the cord, from the receptacle to reduce the risk of damage to the electrical plug and cord. Never carry the charger by its cord or yank it by the cord to disconnect it from the receptacle. Keep the cord away from heat, oil and sharp edges. Make sure the cord will not be stepped on, tripped over or subjected to damage or stress when the charger is in use. Do not use the charger with a damaged cord or plug. Replace a damaged charger immediately.
- Do not use an extension cord unless it is absolutely necessary – Using the wrong, damaged or improperly wired extension cord poses a risk of fire and electric shock.
- If an extension cord must be used, plug the charger into a properly wired 16 gauge or larger extension cord with the female plug matching the male plug on the charger. Make sure that the extension cord is in good electrical condition.
- Charger is rated for 230-240 volt AC only – The charger must be plugged into an appropriate receptacle.
- Use only recommended attachments – Use of an attachment not recommended or sold by the battery charger or battery pack manufacturer may result in risk of fire, electric shock or personal injury.
- Unplug charger when not in use – Make sure to remove battery packs from unplugged chargers.
- Do not burn or incinerate battery packs – Battery packs may explode, causing personal injury or damage. Toxic fumes and materials are created when battery packs are burned.
- Do not crush, drop or damage battery packs – Do not use the battery pack or charger if they have sustained a sharp blow, been dropped, run over or have been damaged in any way (i.e. pierced with a nail, hit with a hammer, stepped on, etc.).
- Battery chemicals cause serious burns – Never let a damaged battery pack contact the skin, eyes or mouth. If a damaged battery pack leaks battery chemicals, use rubber or neoprene gloves to safely dispose of it. If skin is exposed to battery fluids, wash the affected area with soap and water and rinse with vinegar. If eyes are exposed to battery chemicals, immediately flush with water for 20 minutes and seek medical attention. Remove and dispose of contaminated clothing.

- Do not short circuit – A battery pack will short circuit if a metal object makes a connection between the positive and negative contacts on the battery pack. Do not place a battery pack near anything that may cause a short circuit, such as paper clips, coins, keys, screws, nails and other metallic objects. A short-circuited battery pack poses a risk of fire and severe personal injury.
- Store your battery pack and charger in a cool, dry place – Do not store the battery pack or charger where temperatures may exceed 104°F (40°C), such as in direct sunlight or inside a vehicle or metal building during the summer.
- The battery pack supplied with your cordless tiller is only partially charged. The battery pack has to be charged completely before you use the tool for the first time.
- For optimum battery performance, avoid low discharge cycles by charging the battery pack frequently.
- Store the battery pack in a cool place, ideally at 59°F (15°C) and charged to at least 40%.
- Lithium-ion batteries are subject to a natural aging process. The battery pack must be replaced at the latest when its capacity falls to just 80% of its capacity when new. Weakened cells in an aged battery pack are no longer capable of meeting the high power requirements needed for the proper operation of your tiller, and therefore pose a safety risk.
- Do not throw battery packs into an open fire as this poses a risk of explosion.
- Do not ignite the battery pack or expose it to fire.
- Do not exhaustively discharge batteries. Exhaustive discharge will damage the battery cells. The most common cause of exhaustive discharge is lengthy storage or non-use of partially discharged batteries. Stop working as soon as the performance of the battery falls noticeably or the electronic protection system triggers. Place the battery pack in storage only after it has been fully charged.
- Protect batteries and the tool from overloads. Overloads will quickly result in overheating and cell damage inside the battery housing even if this overheating is not apparent externally.
- Avoid damage and shocks. Immediately replace batteries that have been dropped from a height of more than one meter or those that have been exposed to violent shocks, even if the housing of the battery pack appears to be undamaged. The battery cells inside the

battery may have suffered serious damage. In such instances, please read the waste disposal information for proper battery disposal.

- If the battery pack suffers overloading and overheating, the integrated protective cutoff will switch off the equipment for safety reasons.
- **IMPORTANT!** Do not press the ON/OFF switch any more if the protective cut-off has been activated. This may damage the battery pack.
- Use only original battery packs. The use of other batteries poses a fire risk and may result in injuries or an explosion.
- Information about the charger and the charging process
- Please check the data marked on the rating plate of the battery charger. Be sure to connect the battery charger to a power supply with the voltage marked on the rating plate. Never connect it to a different mains voltage.
- Electrical plugs must match the outlet. Never modify the plug in any way. Do not use any adapter plugs with grounded appliances. Unmodified plugs and matching outlets will reduce the risk of electric shock.
- Keep the battery charger, battery pack(s) and the cordless tool out of the reach of children
- Do not use the supplied battery charger to charge other cordless tools.
- Do not overcharge batteries. Do not exceed the maximum charging times. These charging times only apply to discharged batteries. Frequent insertion of a charged or partially charged battery pack will result in overcharging and cell damage. Do not leave batteries in the charger for days on end.
- Do not use batteries that have been exposed to heat during the charging process, as the battery cells may have suffered dangerous damage.
- Do not use batteries that have suffered curvature or deformation during the charging process or those that exhibit other atypical symptoms (gassing, hissing, cracking, etc.).
- Never fully discharge the battery pack (maximum recommended depth of discharge is 80%). A complete discharge of the battery pack will lead to premature aging of the battery cells.

DIAGRAM OF PRODUCT



Read the owner's manual and safety instructions carefully before operating the cordless tiller. Compare the illustration below to the cordless tiller in order to familiarize yourself with the location of the various controls and adjustments. Save this manual for future reference.

1. Main handle
2. Weed sweeper head
3. Wire brush
4. Nylon brush
5. Pin
6. Screw
6. Charger
7. Battery pack

ASSEMBLING THE PRODUCT

Before you connect the equipment to the power supply make sure that the data on the rating plate is identical to the supply voltage. Always pull out the power plug before adjusting the equipment.

- Fit the brush onto the drive axle. Make sure that the brush fits accurately into the mount .(Fig.4)
- The shaft must be fixed in order to fasten the brush. To do so, insert the pin (Fig.5) into the recess on the shaft and hold with one hand.
- Secure the nut.(Fig.6)

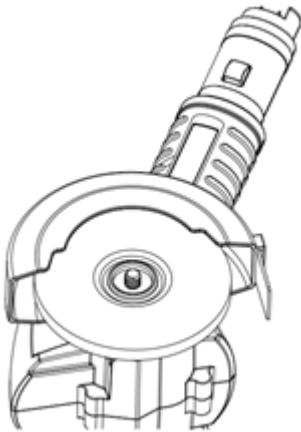


FIG.4

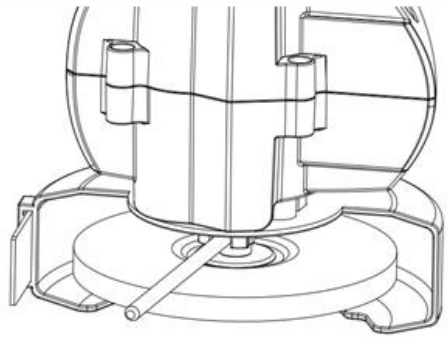


FIG.5

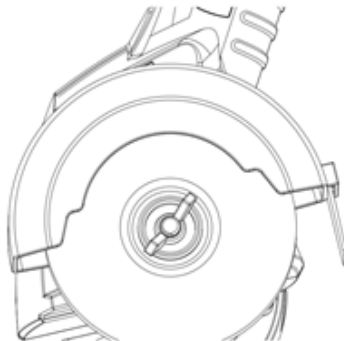


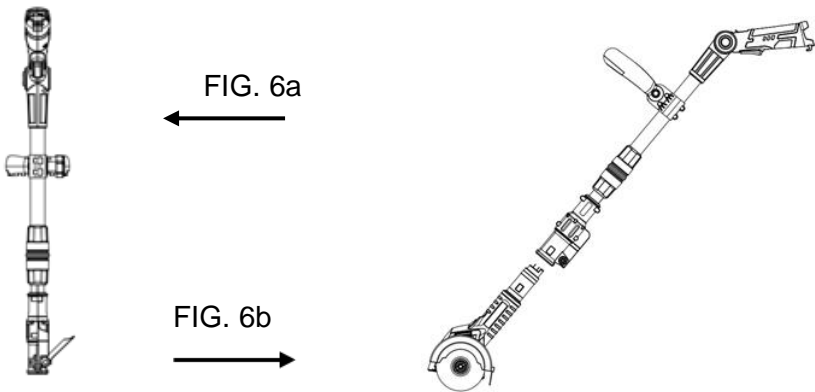
FIG. 6

ASSEMBLING THE PRODUCT

Important: Be sure to remove the pin again from the shaft. To dismantle the equipment for changing the brush, proceed in reverse order.

CONNECTING THE WEED SWEEPER HEAD WITH THE SHAFT

◎ Lifting the spanner of the telescopic shaft (Fig. 6a), connecting the head with the shaft (Fig. 6b). Then press the spanner.



ADJUST THE LENGTH OF THE TILLER (Fig7)

◎ Loosen the lower half of the knob located in the middle of aluminium shaft by turning it anti-clockwise.

◎ Pull the lower shaft up or down to adjust the desired height.

◎ Tighten the knob by turning counter clockwise.

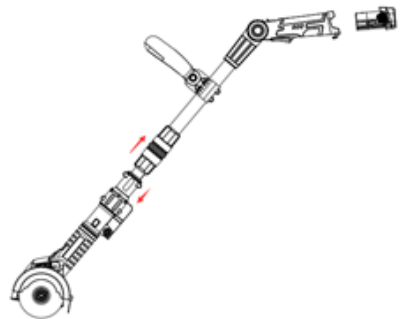


FIG.7

CONNECTING THE BATTERY PACK TO THE MACHINE



Battery Pack Operation

The equipment is powered by a lithium-ion battery. The battery pack is completely sealed and maintenance free.

Battery Charge Level Indicator

The battery pack is equipped with a push button for checking the charge level. Simply press the push button to read off the battery charge level from the LEDs of the battery indicator:

- All 3 level monitoring LEDs are lit: Battery charge level is high.
- 2 level monitoring LEDs are lit: Battery charge level is decreasing. Stop work as soon as possible.
- 1 level monitoring LED is lit: Battery is flat. Stop work IMMEDIATELY and charge the battery. Otherwise, the battery's service life will be greatly shortened.

After Use

- Switch the product off, remove the battery, and let it cool completely.
- Check, clean, and store the product as described below.

Cleaning and Maintenance

WARNING! Always switch the product off, remove the battery and let the product cool completely before inspecting, cleaning, or performing any other maintenance task.

- Keep the product clean. Remove any debris after each use and before storage.
- Regular and proper cleaning will help ensure safe use and prolong the life of the product.
- Inspect the product before each use for worn and damaged parts. If you find broken and/or worn parts, do not use the tool.

WARNING! Only perform the repairs and maintenance work described in this manual. Any other work must be performed by a qualified Technician.

General Cleaning

- Clean the product with a dry cloth. Use a brush for areas that are hard to reach.
- Be sure to clean the air vents after every use with a cloth and brush.
- Remove stubborn dirt with high pressure air (max. 3 bar).

NOTE: Do not use chemical, alkaline, abrasive, or other aggressive detergents or disinfectants to clean this product as such substances might damage the tool's surfaces.

Cleaning the Working Tool

WARNING! Wear safety gloves when working on or near the working tool. Use appropriate tools (e.g., a wooden stick) when necessary; never use your bare hands!

- All nuts and bolts must be checked periodically for tightness before operation. After prolonged use, especially in sandy soil conditions, the working tool will become worn and lose some of its original shape. Tilling efficiency will be reduced and the working tool should be replaced.

- Have worn or damaged working parts replaced with new ones of the same type by a qualified technician.

WARNING! Unexpected blade movement may cause personal injury. Before servicing, repairing, or inspecting the unit, turn the motor OFF and remove the battery. Wait for the blades to completely stop rotating before conducting inspection, cleaning, or maintenance.

Before and after each use, check the product and accessories (or attachments) for wear and damage. When necessary, only use identical replacement parts that are approved by the manufacturer.

WARNING! Contact with hot components (e.g., motor housing, gear box, etc.) on the machine may cause burns.

Allow the machine to cool off before handling.

IMPORTANT!

- Wear protective gloves when cleaning or maintaining the machine.
- Do not use cleaning fluids or solvents or spray the machine down with water (especially water under pressure) when cleaning the machine.

NOTE: After each use, follow these steps to properly clean the unit:

1. Remove soil, dirt, and foliage stuck in the blades, drive shaft, tool surface, and vents with a brush or dry cloth.
2. Clean soiled grips with a damp cloth.

Always inspect the machine for damaged and worn parts after each use. Check that safety features (i.e., labels, guards, etc.) are in place. Check that nuts, bolts, and screws are tight.

Spare Parts and Repairs

To order replacement parts, please go to www.nettadirect.com/parts.

You will need PDC information from your product, user manual or carton box. Alternatively, go to our website and use search bar to find the parts available. You can also find this code on the [back of this user manual](#).

For our repair service, please contact our customer support with email on support@nettadirect.com they will provide with more details of repair service with NETTA.

Disposal of Product

IMPORTANT INFORMATION FOR THE CORRECT DISPOSAL OF THE PRODUCT IN ACCORDANCE WITH EC DIRECTIVE 2002/96/EC.

DISPOSAL:

Please dispose of this product responsibly. This item cannot be disposed of with general waste. Please contact your local council authority for more information on how to dispose this product. If this product is disposed of with general waste, it will end up in a landfill and will leak hazardous substances into the groundwater – effecting our food chain.



Your Warranty

If you purchased with NETTADIRECT, or one of our authorised resellers, you will automatically enrol your warranty for 1 (ONE) year. You do not need to register again for your warranty. All warranties will be carried out to our terms and conditions including warranty conditions you will find out from our website at www.nettadirect.com.

Copyrights

NETTA and its logo including images and contents in this manual and website is copyrighted. All intellectual property rights belong to NETTA owner CONSUMABLE DIRECT LIMITED.

ANY UNAUTHORISED USE, MODIFICATION or DISTRIBUTION of the NETTA logo, website image, and its contents (from website, manuals) will violate worldwide copyright, trademark and associated laws.

We reserve the right to proceed with lawsuits to anyone who is found breaching our copyrights policy. For more details, please check our website copyright policy for more information.

PRODUCT DEPENDENCY CODE (PDC)

Your PDC is below:

PDC: JYWS011012

SKU: 104104

NETTA is a registered trademark of CONSUMABLE DIRECT LIMITED.
Product Produced for CONSUMABLE DIRECT LIMITED M30 0QF U.K.