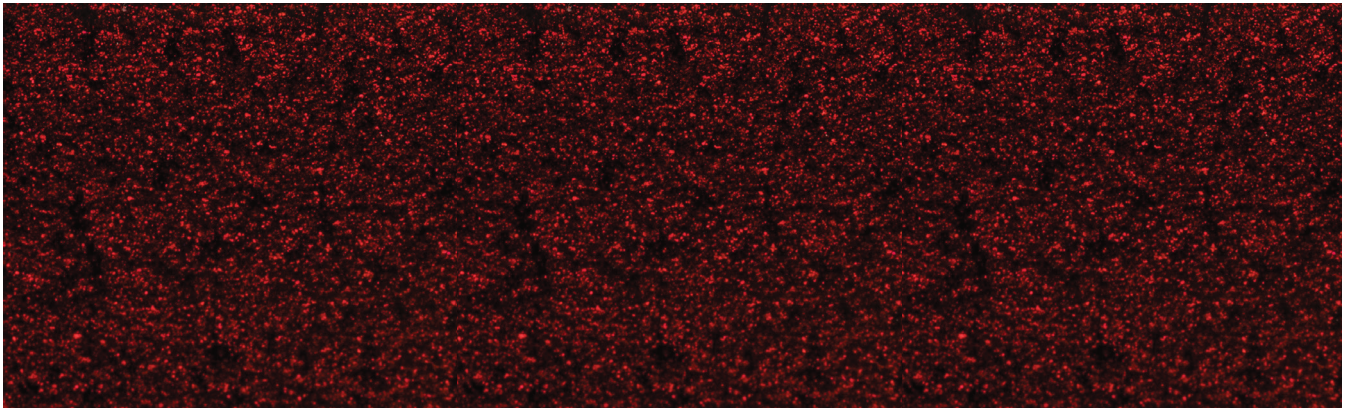
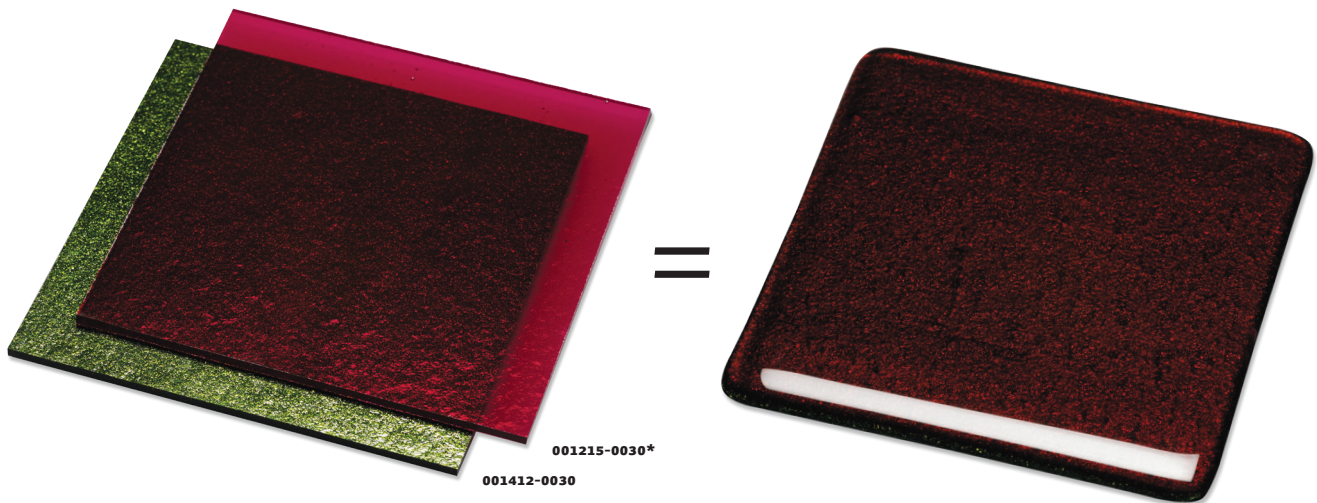


🎯 Quick Tip: Sparkle, Sparkle



Create Hues with Sparkle and Depth

Did you ever wonder why Bullseye doesn't make an Aventurine version of other colors, like red, for example? We would if we could! The chemistry of those sparkles (a.k.a., flake) is deeply tied to green glass. In the kiln, however, you can layer to create new hues. When we were tipped off to this combination by Meryl Raiffe at *The Glass Underground*, we just had to try it and share the results!



Light Pink (001215-0030)* fired over **Light Aventurine Green (001412-0030)** results in a dark, red-hued glitter effect. Remember to do a “gold hold” for two hours at 1225°F (663°C) in this full fuse firing.

*We fired Light Pink to illustrate its struck color.

At right, we've fired **Light Aventurine Green (001412-0030)**, from left to right, with caps of **Light Turquoise Blue (001416-0030)**, **Light Silver Gray (001429-0030)**, and **Light Orange (001025-0030)**. Each of these medium saturation transparent glasses is strong enough to affect Aventurine's color while transparent enough to let its sparkle shine through, creating deep hues that emanate an enchanting glitter effect.

