

# Assembly instruction

## PEDESTAL DUST COLLECTOR

### GU1

Part no. 9686003A



## Table of contents

<b>1</b>	<b>Safety</b>	
1.1	Type plate .....	4
1.2	Safety instructions (warning notes).....	5
	1.2.1 Classification of hazards .....	5
	1.2.2 Other pictograms .....	5
1.3	Intended use .....	6
1.4	Reasonably foreseeable misuse.....	7
	1.4.1 Avoiding misuse .....	7
<b>2</b>	<b>Technical specification</b>	
2.1	Dimensions .....	9
<b>3</b>	<b>Delivery, interdepartmental transport, unpacking</b>	
3.1	Delivery.....	14
3.2	Interdepartmental transport .....	14
3.3	Unpacking.....	14
3.4	Example figure of a grinding machine .....	15
3.5	Fitting possibility of the GU1 .....	15
<b>4</b>	<b>Operation</b>	
4.1	Description of Functioning of the Extraction System .....	16
4.2	Functional Description of the Electrical Connections.....	16
4.3	Fire and Explosion Prevention.....	17
<b>5</b>	<b>Maintenance</b>	
5.1	Inspection and maintenance.....	18
<b>6</b>	<b>Spare parts</b>	
6.1	Ordering spare partsÁ.....	2€
6.2	Electrical spare parts.....	2€
	6.2.1Á Wiring diagramÁ.....	2€
6.3	GU1Á.....	2€

## Preface

Dear customer,

Thank you very much for purchasing a product made by company.

Company accessories for metal working machines offer a maximum of quality, technically company solutions and convince by an outstanding price performance ratio. Continuous enhancements and product innovations guarantee state-of-the-art products and safety at any time.

Before commissioning the complete machine please thoroughly read these operating instructions and get familiar with the complete machine. Please also make sure that all persons operating the complete machine have read and understood the operating instructions beforehand.

**The operating instructions of the entire machine shall be provided by the supplier of the entirety of all the connected machine components.**

Information

These installation instructions contain specifications on the proper installation in a complete machine, and operation and maintenance of this incomplete machine.

**If you have any further questions after reading these assembly instructions and you are not able to solve your problem with a help of these assembly instruction, please contact your specialised dealer or directly the company.**

**C.H.HANSON**




**2000 North Aurora Rd.**

**Naperville,IL 60563**

**Call 800-827-3398**

# 1 Safety

## Glossary of symbols

	provides further instructions
	calls on you to act
	listings

This part of the assembly instruction

- explains the meaning and use of the warning notes included in these assembly instruction,
- defines the intended use of the part machine,
- points out the dangers that might arise for you or others if these assembly instruction is not observed,
- informs you about how to avoid dangers.

In addition to these assembly instruction, please observe

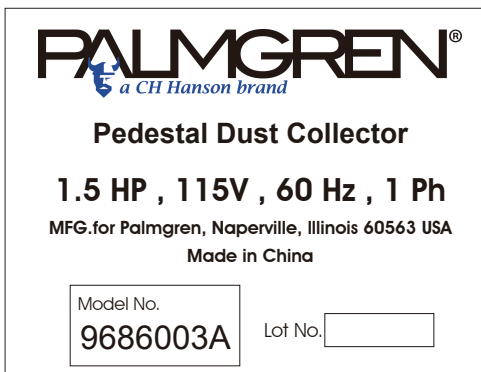
- the applicable laws and regulations,
- the statutory provisions for accident prevention,
- the prohibition, warning and mandatory signs as well as the warning notes on the complete machine.

When installing, operating, maintaining and repairing the machine, the relevant standards must be observed.

If European standards have not yet been incorporated in the national legislation of the country in question, the specific applicable regulations of each country must be observed.

If necessary, relevant measures must be taken to comply with national regulations before commissioning the machine.

### 1.1 Type plate



#### INFORMATION

If you are unable to rectify an issue using these assembly instruction, please contact us for advice:



C.H.HANSON

2000 North Aurora Rd.




Naperville, IL 60563

Call 800-827-3398

## 1.2 Safety instructions (warning notes)

### 1.2.1 Classification of hazards

We classify the safety warnings into different categories. The table below gives an overview of the classification of symbols (ideogram) and the warning signs for each specific danger and its (possible) consequences.

Symbol	Alarm expression	Definition / consequence
	<b>DANGER!</b>	Impending danger that will cause serious injury or death to people.
	<b>WARNING!</b>	A danger that can cause serious injury or death.
	<b>CAUTION!</b>	A danger or unsafe procedure that can cause personal injury or damage to property.
	<b>ATTENTION!</b>	Situation that could cause damage to the machine and product, as well as other types of damage. No risk of injury to persons.
	<b>INFORMATION</b>	Practical tips and other important or useful information and notes. No dangerous or harmful consequences for people or objects.

In case of specific dangers, we replace the pictogram with



### 1.2.2 Other pictograms





Wear safety shoes!



Wear a protective suit!



Contact address

### 1.3 Intended use

#### WARNING!

**In the event of improper use, the machine**

- **may be a hazard to personnel,**
- **the machine and other material property of the operating company will be endangered,**
- **the correct function of the machine may be affected.**



Machine substructure with electrically driven blower and cyclone separator for capture of air pollutants on manually-operated machine tools is for removing material with geometrically undefined cutting edges.

The use of the machine while operating with non-water miscible or water miscible cutting fluids is prohibited.

The machine must only be set up and operated in dry, ventilated rooms.

The machine is designed and constructed for use in non-explosive environments.

The defined conditions of use and performance data must not be changed.

The machine must neither be renovated nor modified in any other way without consultation with the manufacturer.

If the machine is used other than as specified above, without the permission of the company, the machine is no longer used properly.

We accept no liability for damage resulting from improper use.

We expressly point out that the guarantee will expire, if any constructive, technical or procedural changes are not performed by the company. It is also part of the intended use that you

- observe the limits of the machine,
- the assembly instruction is observed,
- the inspection and maintenance instructions are observed.

☞ "Technical specification" on page 8

#### WARNING!

**Extremely severe injuries due to non-intended use.**

**Do not make any modifications or alternations to the operation values of the machine. They could endanger the personnel and cause damage to the machine.**



## **1.4 Reasonably foreseeable misuse**

The installation of chip-type machines for tools with geometrically indeterminate cutting on the machine substructure GU1 must only be done by qualified personnel.

### **Qualified personnel**

Due to their professional training, knowledge and experience as well as knowledge of relevant regulations, qualified personnel are able to perform the assigned tasks and to independently recognise and avoid any possible dangers.

Any use other than that specified under "Intended use" or any use beyond that described will be deemed non-intended use and is not permissible.

Any other use must be discussed with the manufacturer.

### **1.4.1 Avoiding misuse**

#### **Workplace limits**

During activities that involve ablating machines, the general dust limit (inter alia) pursuant to TRGS 900 should be observed with regard to the release of aluminium, aluminium hydroxide, aluminium oxide (except aluminium oxide smoke), iron (II) oxide, iron (III) oxide, graphite, and magnesium oxide (except magnesium oxide smoke). For fraction absorbable by alveoli, the limit is 3 mg/m<sup>3</sup> and for the respirable fraction, 10 mg/m<sup>3</sup>.

Where toxic, highly toxic, carcinogenic, mutagenic or fertility-damaging substances may be released, additional safety measures in accordance with §10, GefStoffV are necessary. In the case of fertility-damaging substances, the German Maternal Safety and Parental Leave Ordinance (MuSchEltZV) should be observed.

## 2 Technical specification

The following information represents the dimensions and indications of weight and the manufacturer's approved machine data.

Electrical connection	
○ Part no. 9686003A	115V ~ 60Hz
Blower engine power	1.5 HP
Speed of the blower [ rpm ]	22000
Carrying capacity of the machine sub-structure	Max. 70 kg(154 lbs)
Dust container volume	1.8 litres
Filter surface of exhaust air filter Filament fine filter	0.061 m <sup>2</sup>
Weight of the machine substructure	40 kg (88lbs)
Utility space on the machine substructure	
○ Depth	287mm(11.3 inch)
○ Width	340mm(13.38 inch)

### Emission measurement

The generation of noise emitted by the capture device is 89 dB(A) to 92 dB(A), measured at a distance of one meter from the machine and at a height of 1.6m.

### INFORMATION

This numerical value was measured on a new machine under the operating conditions specified by the manufacturer. The noise behaviour of the machine might change depending on the age and wear of the machine.

Furthermore, the noise emission also depends on production engineering factors, e.g. speed, material and clamping conditions.



### INFORMATION

The mentioned numerical value is the emission level.

Though there is a dependency between the degree of the noise emission and the degree of the noise disturbance it is not possible to use it reliably to determine if further precaution measures are required or not.

The following factors influence the actual degree of the noise exposure of the operator:

- Characteristics of the working area, e.g. size or damping behaviour,
- other noise sources, e.g. the number of machines,
- other processes taking place in proximity and the period of time, during which the operator is exposed to the noise.

Furthermore, it is possible that the admissible exposure level might be different from country to country due to national regulations.





This information about the noise emission should, however, allow the operator of the machine to more easily evaluate the hazards and risks.



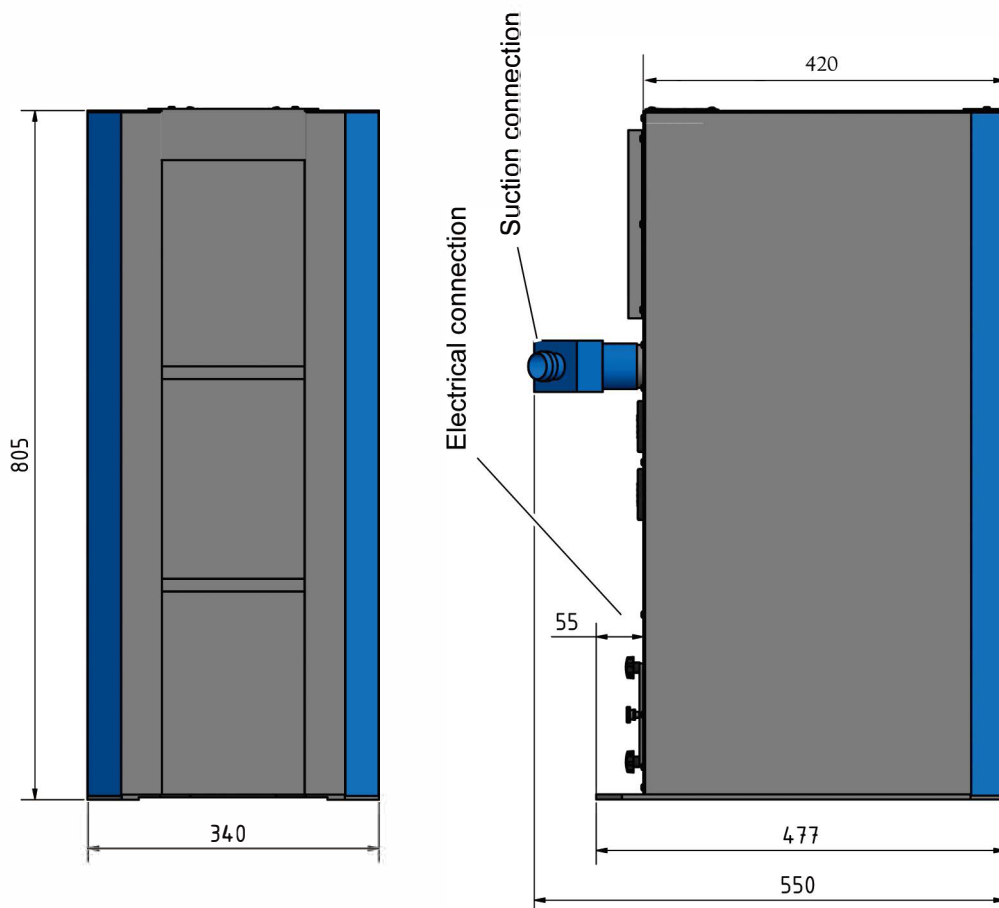
**CAUTION!**

Depending on the overall noise exposure and the basic threshold values, machine operators must wear appropriate hearing protection.

We generally recommend the use of noise and ear protectors.

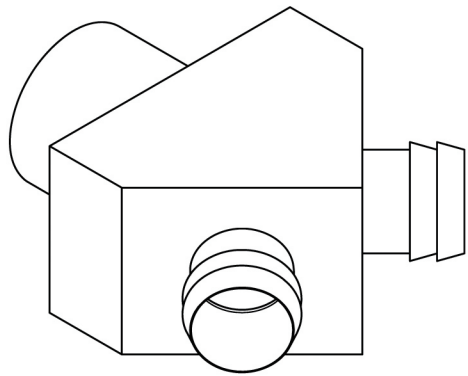
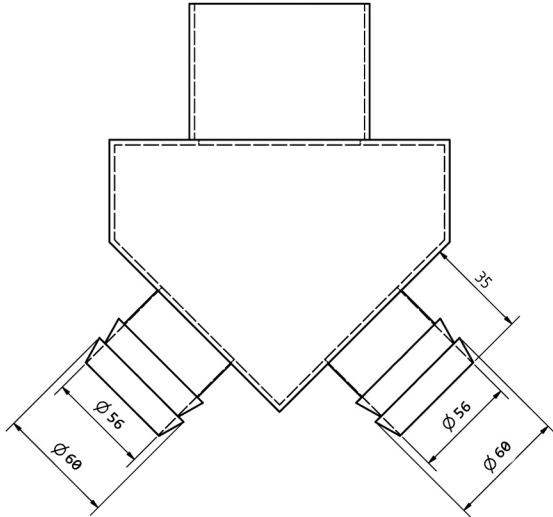
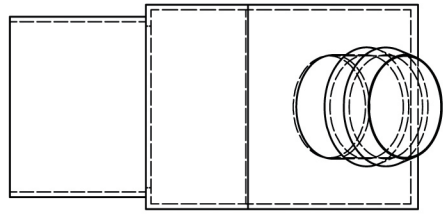
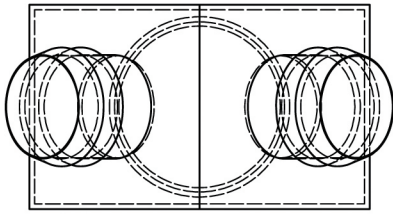


**2.1 Dimensions**

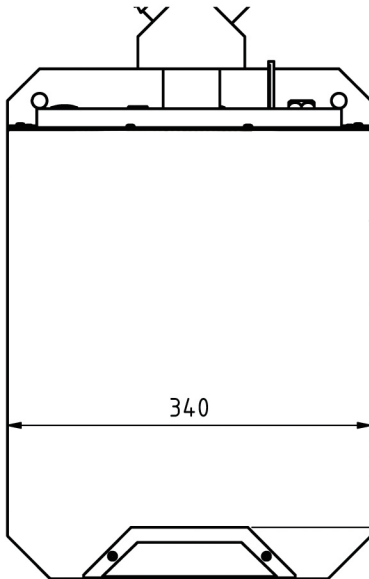


Gewicht / Weight : 40 kg

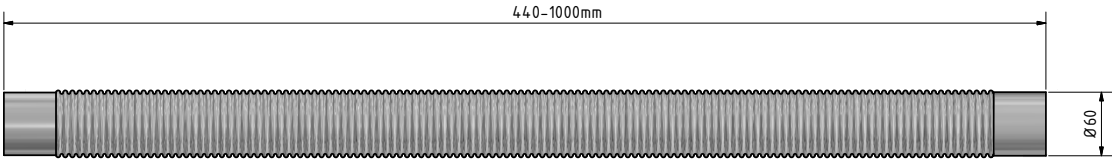
**T-piece suction connection**



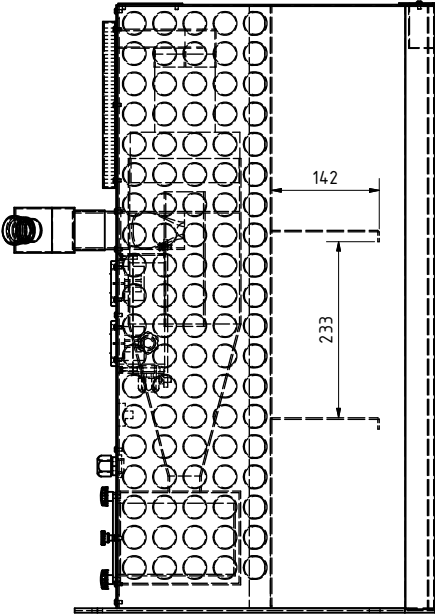
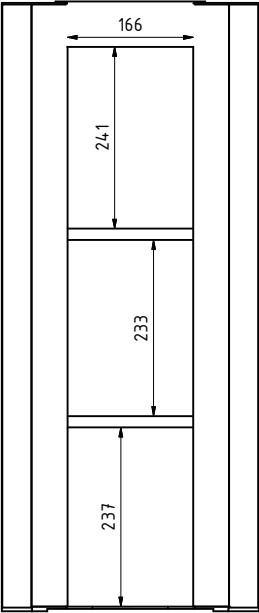
**Utility space on the machine substructure**



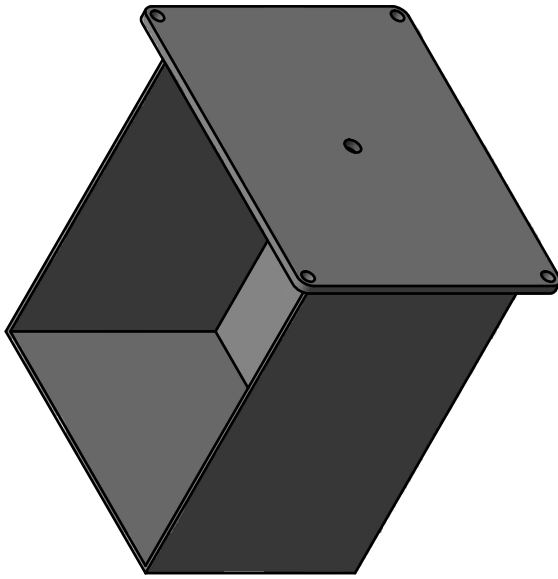
**Suction Flex pipe**



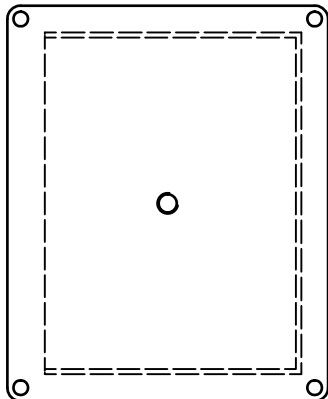
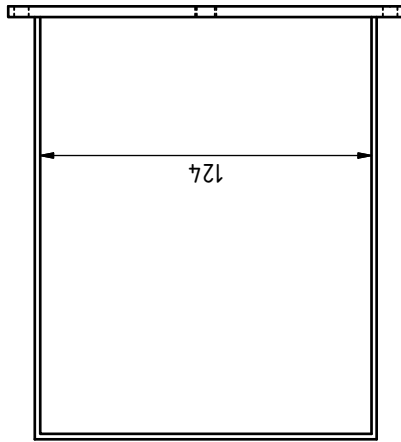
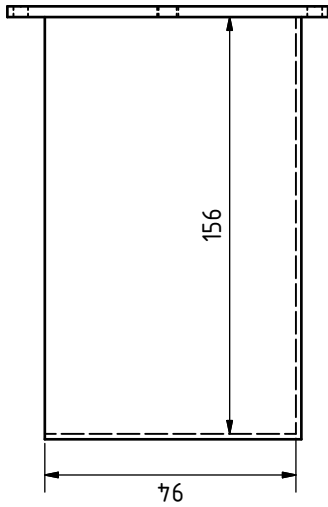
**Storage compartments**



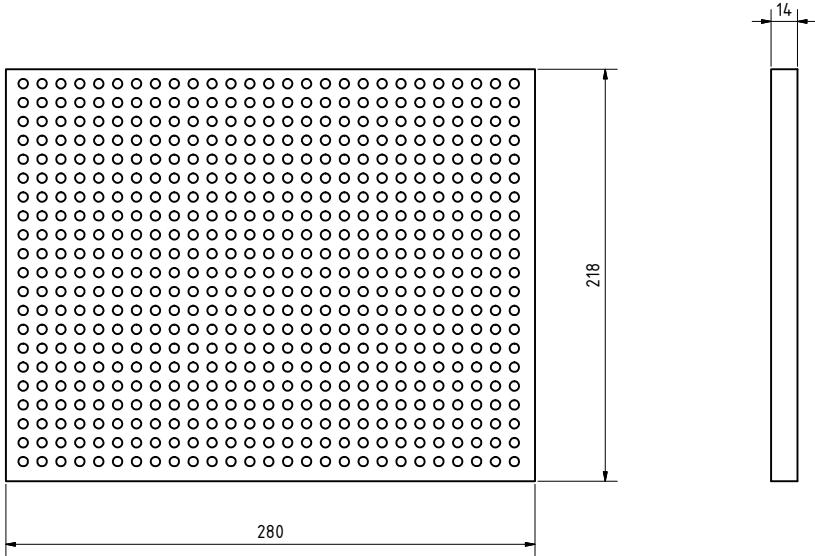
Dust container



Behältervolumen : 1,8 Liter  
Container volume : 1.8 litres



**Exhaust air filter**



Filament Fine filter  
Filter surface: 0.061 m<sup>2</sup>

### 3 Delivery, interdepartmental transport, unpacking

#### INFORMATION

The machine substructure with suction device is fully assembled. It is delivered in a transport box.

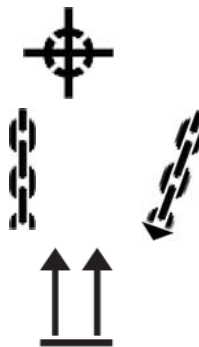
#### 3.1 Delivery

Check the status of the machine immediately upon receipt and claim possible damages at the last carrier also if the packing is not being damaged. In order to ensure claims towards the freight carrier we recommend you to leave the machines, devices and packing material for the time being in the status at which you have determined the damage or to take photos of this status. Please inform us about any other claims within six days after receipt of delivery.

Check if all parts are firmly seated.

#### 3.2 Interdepartmental transport

- Centres of gravity
- Load suspension points  
(Marking of the positions for the load suspension gear)
- Prescribed transport position  
(Marking of the top surface)
- Means of transport to be used
- Weights



#### WARNING!

**Severe or fatal injuries may occur if parts of the machine tumble or fall down from the forklift truck or from the transport vehicle. Follow the instructions and information on the transport box.**

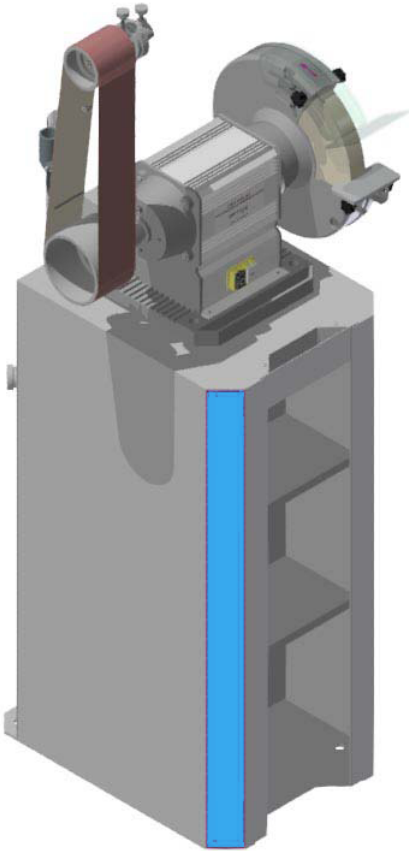


#### 3.3 Unpacking

Install the machine close to its final position before unpacking. If the packaging shows signs of having possibly been damaged during transport, take the appropriate precautions to prevent the machine being damaged when unpacking. If damage is discovered, the carrier and/or shipper must be notified immediately so the necessary steps can be taken to register a complaint.

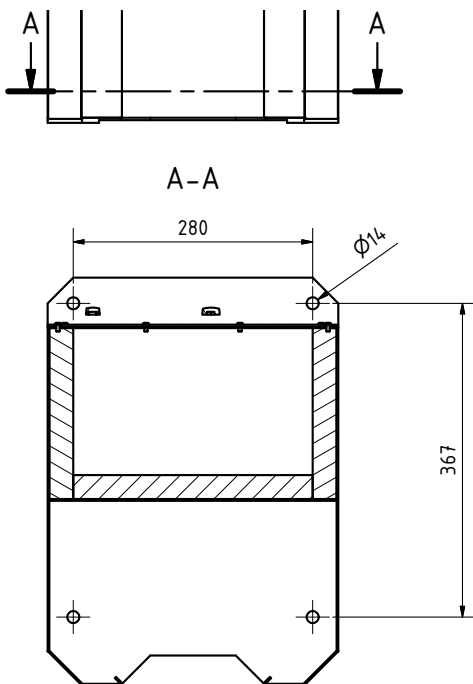
Examine the complete machine carefully and check whether all materials, such as shipping documents, assembly instruction and accessories have been delivered with the machine.

**3.4 Example figure of a grinding machine**  
on the machine substructure with suction device.



**3.5 Fitting possibility of the GU1**

The machine substructure can be attached to the floor.



## 4 Operation

### 4.1 Description of Functioning of the Extraction System

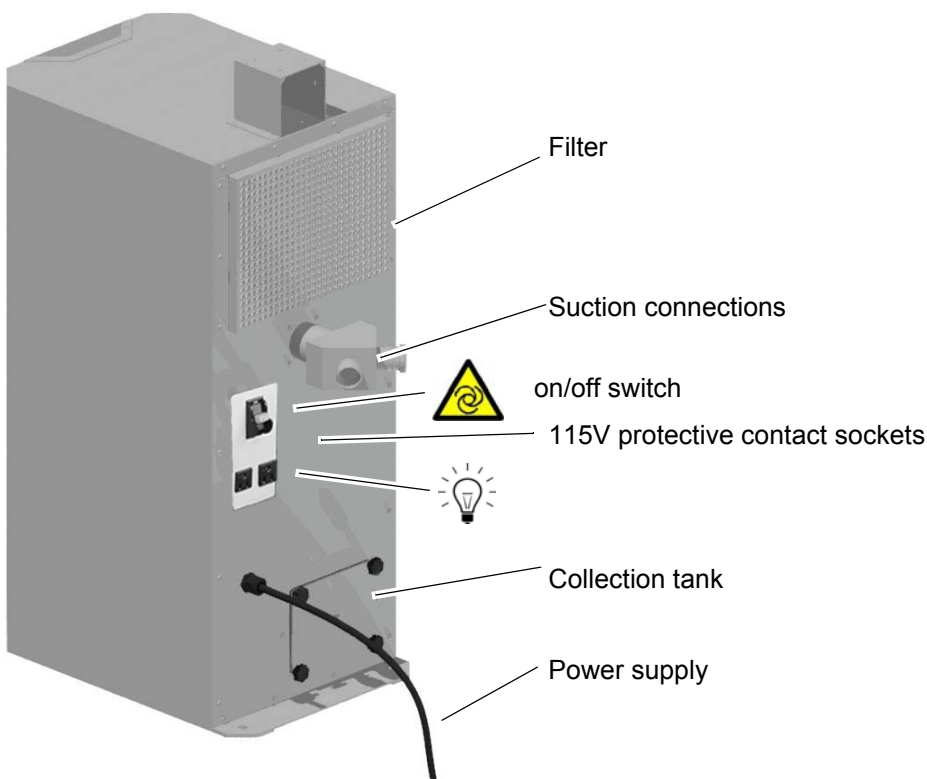
In the machine substructure is situated a fan than generates an underpressure. The underpressure occurring sucks in the ambient air. The quantity of air is directed through cyclone separator which collects the fine dust particulates from the suction connections and places it into a collection tank. The cleaned exhaust air is additionally led outwards via the filter.

### 4.2 Functional Description of the Electrical Connections

The 115V protection contact sockets situated on the rear are used to connect the equipment and machines.

- The maximum possible total current consumption on the both protective contact sockets is 20A for GU1 with 115V mains connection.

One 115V socket is used as a detection signal for switching on the fan in the machine substructure. The fan starts to run as soon as the machine connected there is switched on. The fan shuts down as soon as the machine or equipment connected on 115V plug is switched off.





### 4.3 Fire and Explosion Prevention

From a particle size of 500 µm and below, flammable metal dusts are regarded as explosive.

Accumulated flammable dust can lead to explosive atmospheres by swirling up in machine tools and separators. This should be considered especially in the case of light metal dusts, e.g. aluminium and magnesium.



The machine substructure GU1 is not designed to remove an explosive atmosphere in the working area of the complete machine.

## 5 Maintenance

### 5.1 Inspection and maintenance

The type and level of wear depends to a large extent on the individual usage and operating conditions. Any indicated intervals therefore are only valid for the corresponding approved conditions.

Interval	Where?	What?	How?
Start of work, after every main- tenance or repair work	Collection tank	Emptying	→ Empty the collection tank regularly.
If the suction per- formance re- duces. After empirical values on the part of the opera- tor	Exhaust filter	Cleaning Replacing	→ Wash out filter with water, dry off and reinsert. → Replace the exhaust filter as required.

## 6 Spare parts

### 6.1 Ordering spare parts

Please indicate the following :

- Serial No.
- Machines name
- Date of manufacture
- Article no.

The article no. is located in the spare parts list.

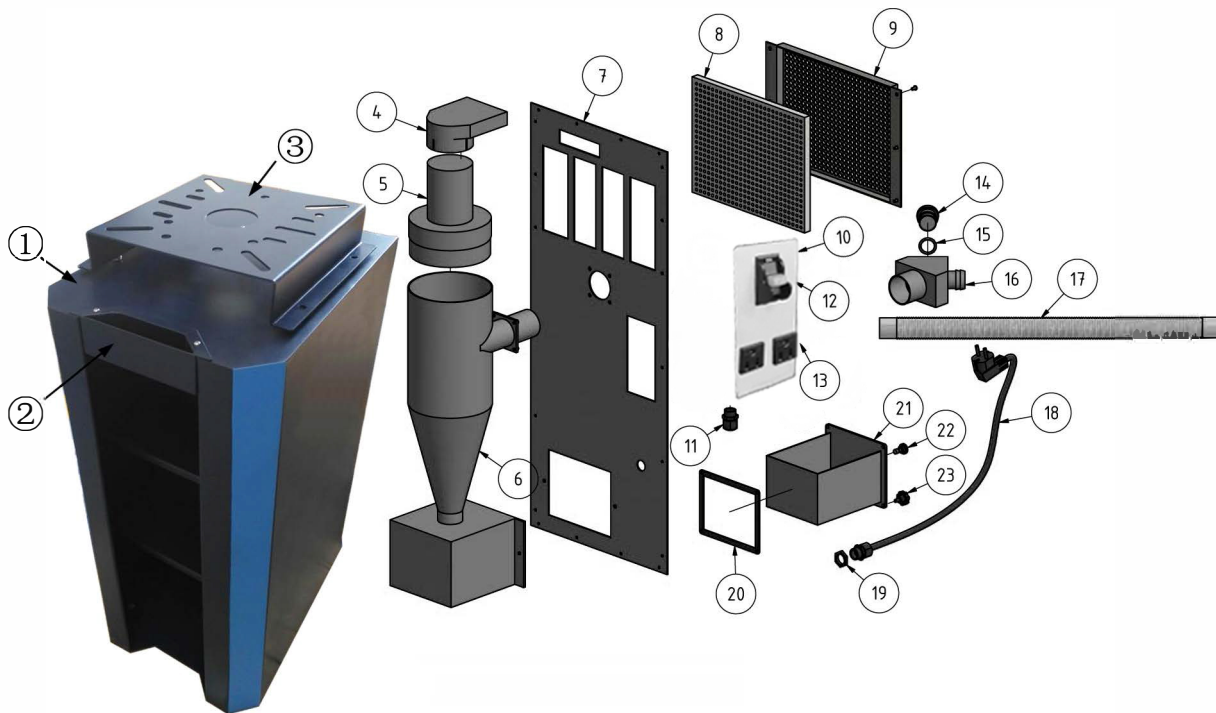
The serial no. is on the type plate.

### 6.2 Electrical spare parts

#### 6.2.1 Wiring diagram

The current circuit diagram and spare parts list is located in the control cabinet of the machine or is located as printed paper in this manual.

### 6.3 GU1



#### Spare parts list GU1

Pos.	Designation	Qty.	Size	Item no.
1	Substructure	1		0310711101
2	Cooling tank	1		0310711102
3	Top mounting plate	1		0310711103-1
4	Plug	1		0310711104
5	Motor	1		0310711105

**Spare parts list GU1**

<b>Pos.</b>	<b>Designation</b>	<b>Qty.</b>	<b>Size</b>	<b>Item no.</b>
6	Cyclone	1		0310711106
7	Back board	1		0310711107
8	Filter	1		0310711108
9	Cover	1		0310711109
10	Housing	1		0310711110-1
11	Strain relief	1		0310711111
12	on-off switch	1		0310711112-1
13	Socket-outlet	2	115V for 115V GU1 supply	03107111132
14	Plug	1		0310711114
15	O-Ring	1		0310711115
16	Manifold	1		0310711116
17	flexibel suction tube (option)	1		0310711117-1
18	Plug cable	1	115V	0310711118-3
19	Clamping nut	1		0310711119
20	Seal	1		0310711120
21	Particles tank	1		0310711121
22	Knurled screw	1		0310711122

