

INSTALLATION GUIDE

HardTUNED
EL Glow

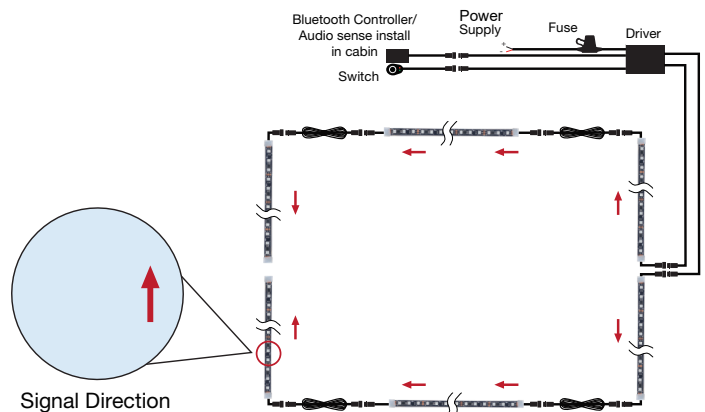
UNDERGLOW



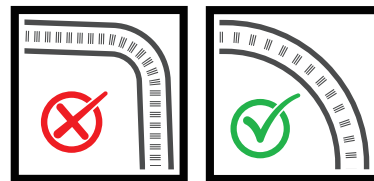
INSTALLATION

WIRING INSTALLATION

NOTE: IF YOU ARE INSTALLING WITH INTERIOR KIT, REFER TO PAGE 4.



CORRECT WAY TO CURVE YOUR LED STRIP



INSTALLATION METHOD

PLEASE TEST KIT PRIOR TO INSTALLATION



STEP 1

Route the wiring from the vehicle cabin to the battery location in your car. Be sure to mount the LED driver near the battery, but away from heat or moving parts.



STEP 2

Install the control switch in a convenient spot inside the cabin for easy access.



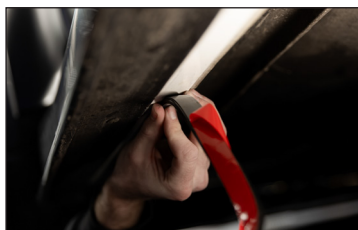
STEP 3

Mount the Bluetooth controller inside the interior cabin. This also has a built in microphone which functions as your music sensor for lighting effects.



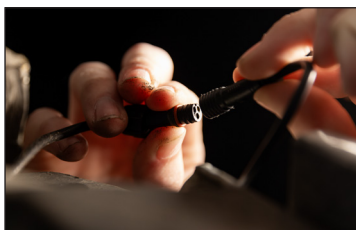
STEP 4

Clean mounting surfaces with alcohol wipes or methylated spirits for strong adhesion.



STEP 5

Attach LED strips to cleaned surfaces. Gently bend as shown in the diagram. Secure with zip ties as necessary.



STEP 6

Connect extension cables and securely fasten them, keeping them clear of moving parts and wheels.



STEP 7

Connect power: red to positive and black to negative terminals on the battery.



STEP 8

Download the app, sync with bluetooth, and enjoy!

IMPORTANT: Do **NOT** power this kit using alternative methods (such as fuse taps). Doing so may pose a fire risk to your vehicle's factory wiring and will void your warranty.

HARDTUNED UNDERGLOW

INSTALLATION GUIDE



UNDERGLOW



MOBILE APP

DOWNLOAD THE APP

- 1) Search in the Apple App Store or Google Play Store for "BanlanX" or scan this QR code -
- 2) Download and install app on your phone



HOW TO CONNECT TO THE APP

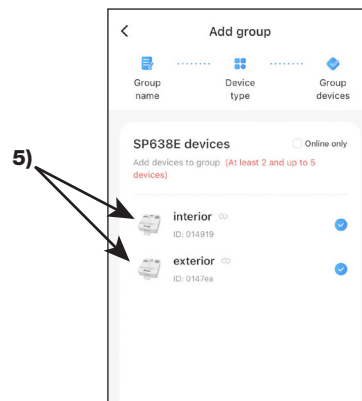
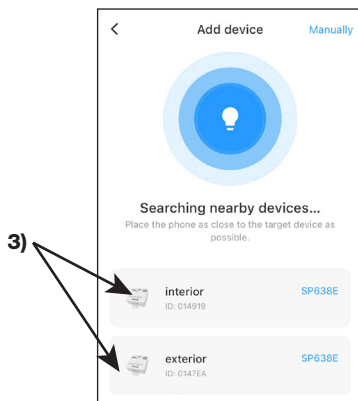
- 1) Power on the underglow
- 2) Open the app and scan
- 3) Add both devices

(Device names may differ slightly in your app version)

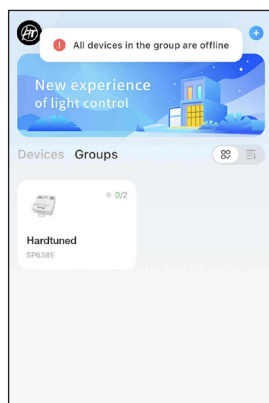
- 4) Click on 'Groups' and click the 'Add group' button

- 5) Select both devices

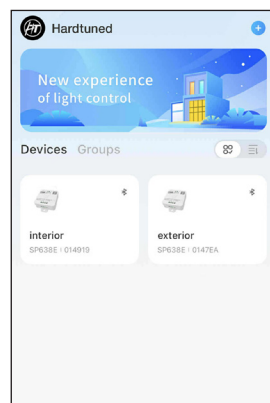
(Group names may differ slightly in your app version)



- 6) This group will now control entire underglow kit



- 7) These devices will now control the left and right side of the underglow kit. If you have the interior kit installed, this will control your interior and exterior. You can rename these devices accordingly.



For more in depth control of the app, check out our "how to" video tutorials.

HARDTUNED UNDERGLOW

INSTALLATION GUIDE



UNDERGLOW

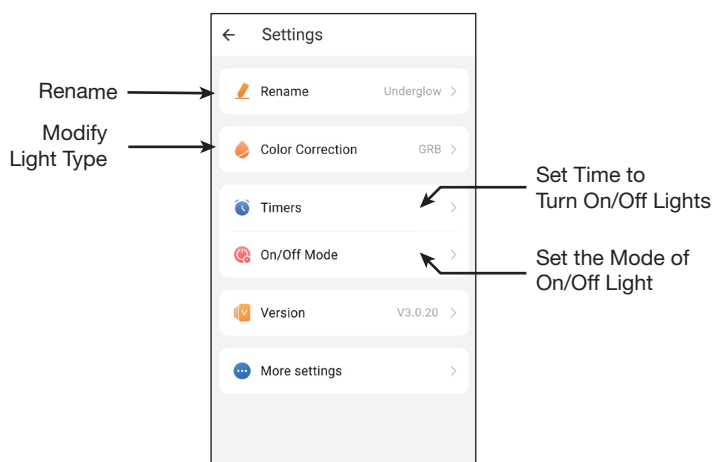


MOBILE APP CUSTOMISATION

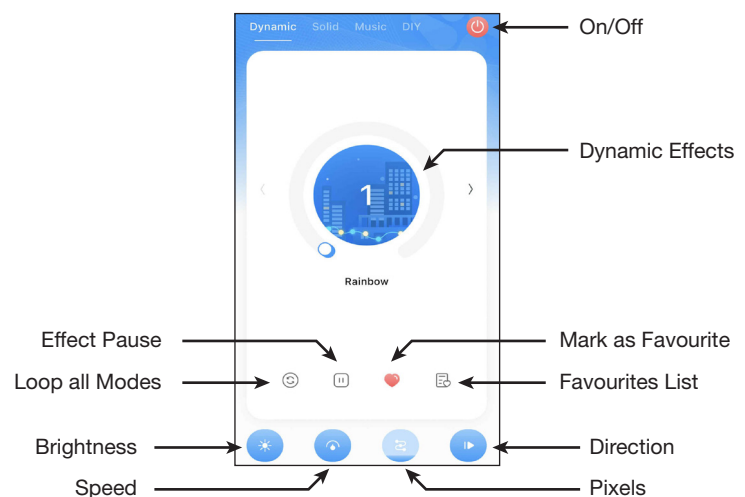
USING THE MOBILE APP

The mobile app has a lot of customisation, we recommend spending 30 minutes exploring and experimenting to become familiar with the features and your preferences.

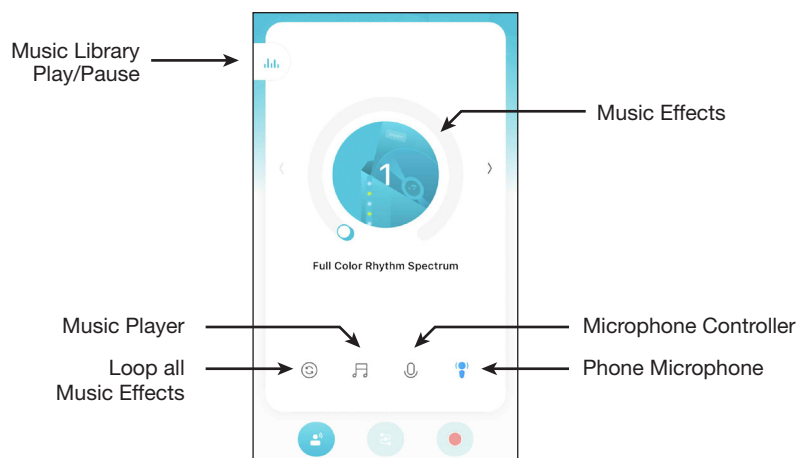
SETTINGS



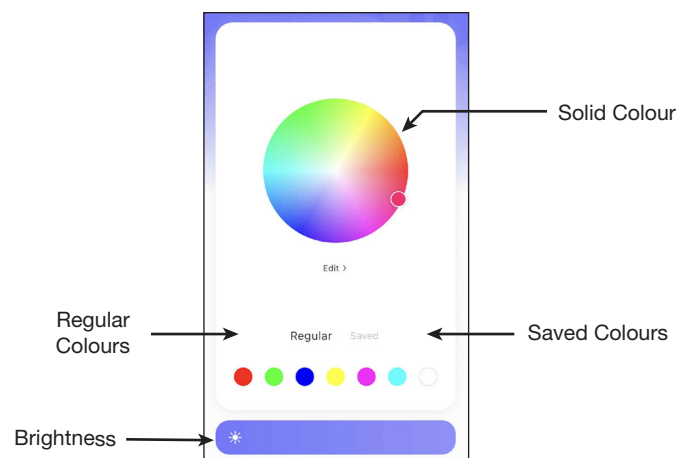
DYNAMIC / ANIMATED MODES



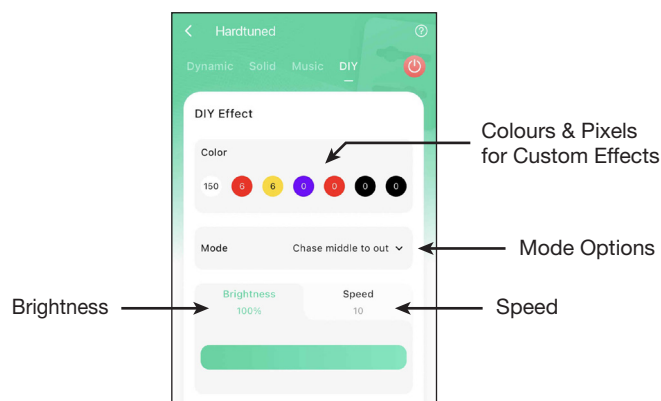
SOUND ACTIVATED MODES



SOLID COLORS



DIY ANIMATED MODES



HARDTUNED UNDERGLOW

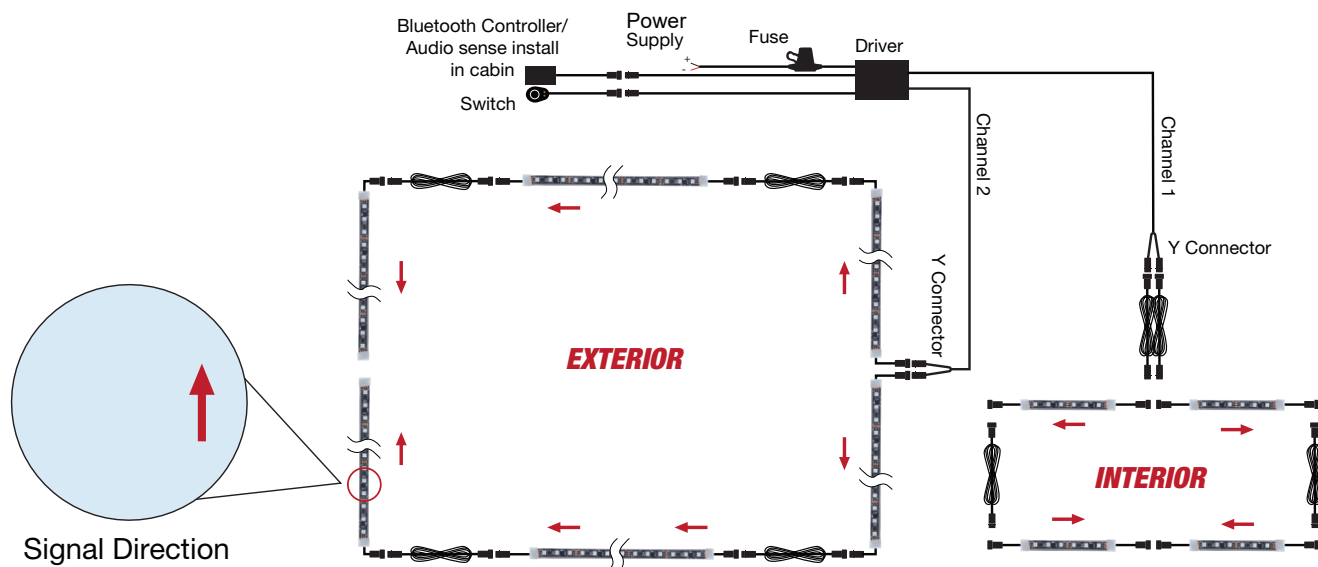
INSTALLATION GUIDE



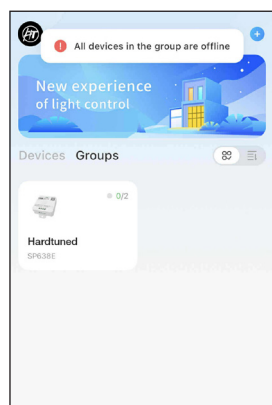
UNDERGLOW



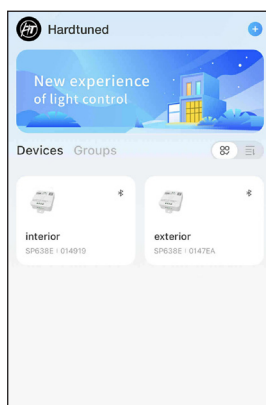
INSTALLATION WITH INTERIOR KIT



CHANNEL INFORMATION



Select this group to control entire underglow kit

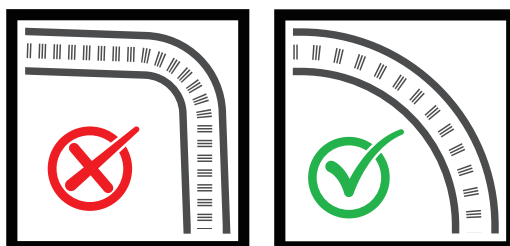


These devices will now control the left and right side of the underglow kit.

If you have the interior kit installed, this will control your interior and exterior.

You can rename these devices accordingly.

CORRECT WAY TO CURVE YOUR LED STRIP



HARDTUNED UNDERGLOW

INSTALLATION GUIDE



FREQUENTLY ASKED QUESTIONS

THE UNDERGLOW IS NOT LIGHTING UP?

- 1) Check whether the switch has power, and the light is green (on).
- 2) Check the connection of the positive and negative terminal and the wires are not damaged.
- 3) Check the fuse is not blown.
- 4) Check the voltage of the vehicle meets the power supply demand of the equipment.
- 5) Check whether the close button is clicked in the app.

WILL THE KIT DRAIN BATTERY?

- 1) When possible, turn off the lights by the switch on the harness; If you only turn off in the app, the battery will drain in 2-3 days.
- 2) There will be a very small power drain over time, if the car is not used often (once a week) we recommend keeping on a charger or disconnecting the negative terminal

CAN'T FIND THE BLUETOOTH DEVICE IN APP?

- 1) Ensure Bluetooth is turned on, exit the app, reopen and connect.
- 2) Ensure the power supply is powered and connected correctly.
- 3) Refresh the page.
- 4) Uninstall the app and reinstall it.

AFTER SALE SERVICE

At Hardtuned, we stand behind the quality and performance of our Underglow kits with a 12-month limited warranty covering manufacturing defects. Our after-sales service is designed to give you peace of mind long after your purchase. If you experience any issues, our support team is ready to help with troubleshooting, warranty claims, or replacement parts. Simply contact us at sales@hardtunedstore.com with your order details, and we'll get you glowing again in no time.

Please note: Kits must be installed using the provided wiring. Any modifications, alternative installations, or changes to the system will void the warranty and may cause damage to your vehicle or the kit.

WARRANTY

WARRANTY PROCEDURE - VALID FOR 6 MONTHS AFTER PURCHASE DATE

- 1) If there are any issues, with the kit please check the FAQ's first.
- 2) If the issue continues, please send a description of your problem as well as any photos or videos to sales@hardtunedstore.com.
Please do not disassemble or throw away any part of the kit. Our team will assist with diagnostics and tests to carry out, so ensure your car and underglow kit is accessible to keep this process as efficient as possible.



HARDTUNED UNDERGLOW