

# Smartwash

# Professional

# Warewasher

**SW900X**

Professional Pass-through Warewasher



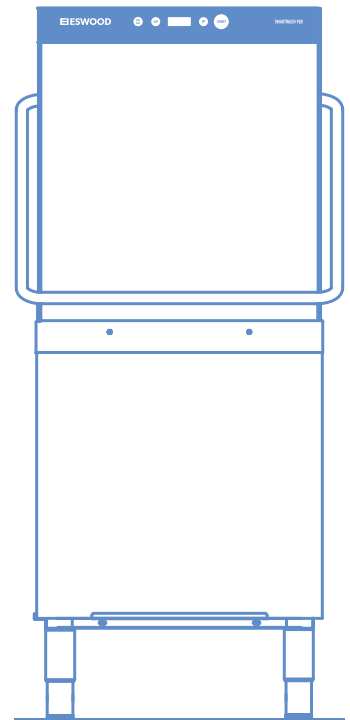
# Smartwash

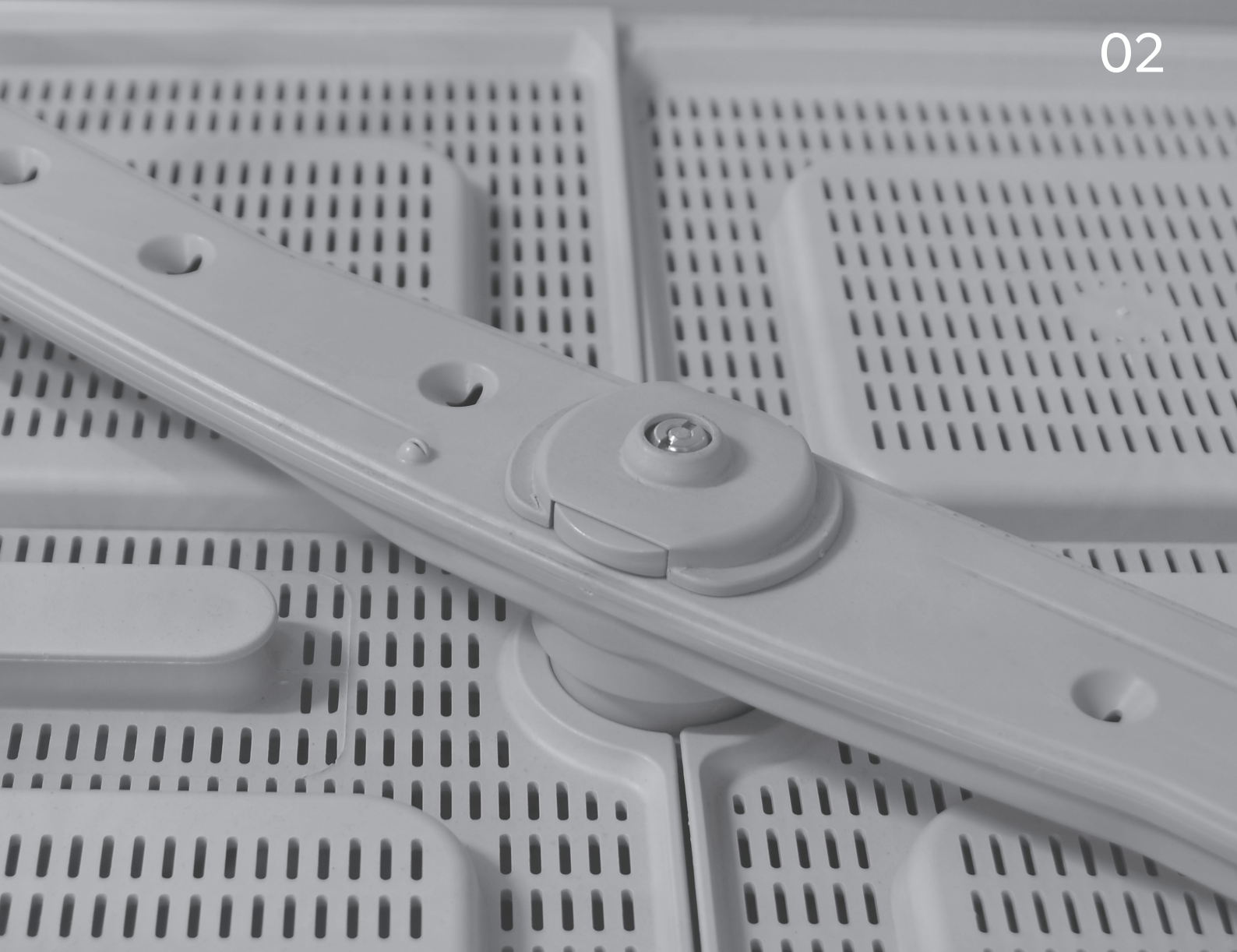
## Pass-through Warewasher

The New Smartwash Range of Pass-through warewashers are the first attractive, intelligent, one touch warewashing system in Australia that offers incredibly sustainable results in water and energy consumption. This professional warewasher offers the first one touch control panel with digital wash and rinse temperature displays for easy HACCP recording for accurate food safety reporting.

These machines are sleek and compact because we know space is of the essence and presentation is key.

Only Smartwash offers you a warewasher with one touch control, drain detergent & rinse aid pumps fitted as standard, a self cleaning cycle and 3 wash cycle options, offering you an economical and sustainable solution for your business.





---

Water saving - uses only 2.3 litres per cycle

---

User friendly TOUCH control panel with digital wash and rinse temperature displays for easy HACCP recording

---

Three wash cycles of 60, 90 & 120 seconds

---

Built-in detergent and rinse aid pump fitted as standard

---

---

Huge 465 mm opening for large items e.g. Pots

---

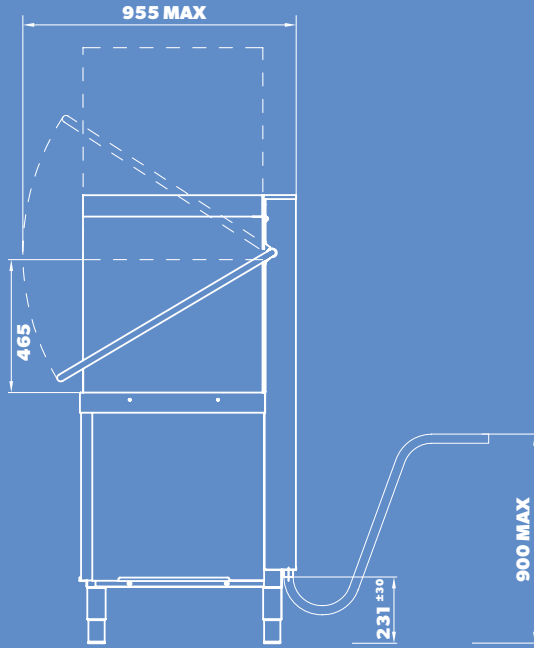
Self cleaning cycle

---

Insulated eco hood for energy saving and noise reduction saves up to 0.5 kW per hour

---

- A. Drain Connection 20mm ID Hose
- B. Water Connection 3/4" x 1.5 Braided Hose
- C. Electrical Connection 3 phase (415V/50Hz/3ph+N+E)



# SW900X

## Professional Pass-through Warewasher

### SW900X Specifications

<b>DIMENSIONS (WDXH)</b>	633 x 755 x 1565 mm
<b>HOOD CONSTRUCTION</b>	Insulated double-skinned
<b>HOOD OPENING</b>	465 mm
<b>HOOD LIFT SYSTEM</b>	ProGlide (3 kg)
<b>HOOD LIFT HANDLE</b>	all-around
<b>WASH CHAMBER</b>	TotalClean - Pipe Free
<b>RACK STAND CONSTRUCTION</b>	S/S wire hinged
<b>TANK VOLUME</b>	22 litres
<b>TANK CONSTRUCTION</b>	deep drawn
<b>TANK HEATING ELEMENT</b>	2,5kW
<b>WASH PUMP TYPE</b>	Double flow
<b>WASH PUMP POWER</b>	700 W
<b>RINSE SYSTEM</b>	SmartRinse
<b>RINSE BOOSTER PUMP</b>	Fitted
<b>SELF DIAGNOSTIC SYSTEM</b>	Fitted
<b>BOILER HEATING ELEMENT</b>	6,0 KW
<b>FRESH WATER CONSUMPTION</b>	2,3 lt/rack
<b>DRAIN SYSTEM</b>	SmartDrain (partial drain)
<b>DRAIN PUMP</b>	Fitted
<b>DOSING SYSTEM</b>	ProDose electr. Controlled
<b>DETERGENT &amp; RINSE AID PUMP</b>	Fitted
<b>TOTAL ELECTRIC LOAD AT 415V (3PH+N+E)</b>	6,7 kW
<b>WASH CYCLES</b>	60, 90, 120 sec
<b>SPECIAL CYCLES</b>	3
<b>SELF CLEANING CYCLE</b>	YES
<b>WATERMARK APPROVAL</b>	WMKT25317
<b>HACCP APPROVAL</b>	PE-388-GE-09

Dimensions may change without notice in accordance with product development and design

Proudly Distributed By



AUTHORISED DISTRIBUTOR

