

d line

Tom Dixon
collection

FAT

FAT COLLINE

About



Tom Dixon

d line is a heritage Danish design brand conceiving and hand crafting enduring architectural hardware, sanitary ware and solutions for barrier-free living. Launched in 1971, the brand's ambition is to be universally known, coveted and admired for the uncompromising endurance of its design, craftsmanship and quality.

Design Research Studio is the design and innovations consultancy at the heart of Tom Dixon. The multidisciplinary team of designers, scientists, engineers, thinkers and architects collaborate with clients to design products, spaces, experiences and brands across the planet.

Working across a broad selection of projects within industrial design, interior design and branding, the studio has curated a global portfolio of projects and collaborators. Its portfolio is the source of knowledge for changes in functionality and style and is a test bed for new ideas.

Introduction

The Fat collection is a series of architectural hardware pieces designed by English industrial designer Tom Dixon. Angular and bulbous, the pieces are a testament to form following function, whilst maintaining a humorous silhouette and a reductionist aesthetic. Fat is part of a fuller series by Tom Dixon including dining chairs, bar stools and lounge chairs.

The collection comprises a lever handle, key escutcheon and thumb turn, as well as a door knocker, pull handle, flush pull and door stop. Like the rest of the d line portfolio, each piece is minimalist enough to be timeless in its design, its beauty coming from its rounded profile and inflated silhouette, rather than from superfluous details. The pieces are enduringly crafted in the highly resilient AISI 316 stainless steel preferred by d line and enhanced by a tight edit of colour finishes for different expressions in aesthetics.

“I think Fat could go in any type of high-traffic building – from nursery schools to hospitals to fashionable nightclubs. The thing is, by having very rounded ends and very grippable handles, they work in a multitude of applications.”

– Tom Dixon

Tom Dixon collection

Inflation, innovation, collaboration

Fat – a name, an aesthetic

Having applied what Tom calls a ‘Fat edge’ or ‘Fat profile’ to several different objects in development at Tom Dixon Studio, the designer had already been using the word ‘Fat’ to imply generosity and softness of form. So, with the studio’s move into architectural ironmongery, and with the same ‘inflation’ process applied to a regular handle, the name again relates. The result lacks any trace of sharpness or angularity and is a collection of pumped-up pieces that are simply ‘Fatter’ than the norm.

A new kind of design challenge

Tom Dixon describes door handles as having “a particularly difficult and hyper-functional set of challenges, because they’ve evolved rather than being designed.” He observes that often designer handles are less functional than traditional ones, because a handle is something with which there’s little to be done to affect the aesthetic beyond what’s come before. The challenge for him and his studio, therefore, has been the creation of something that functions well, yet looks distinctively different from what’s already out there.

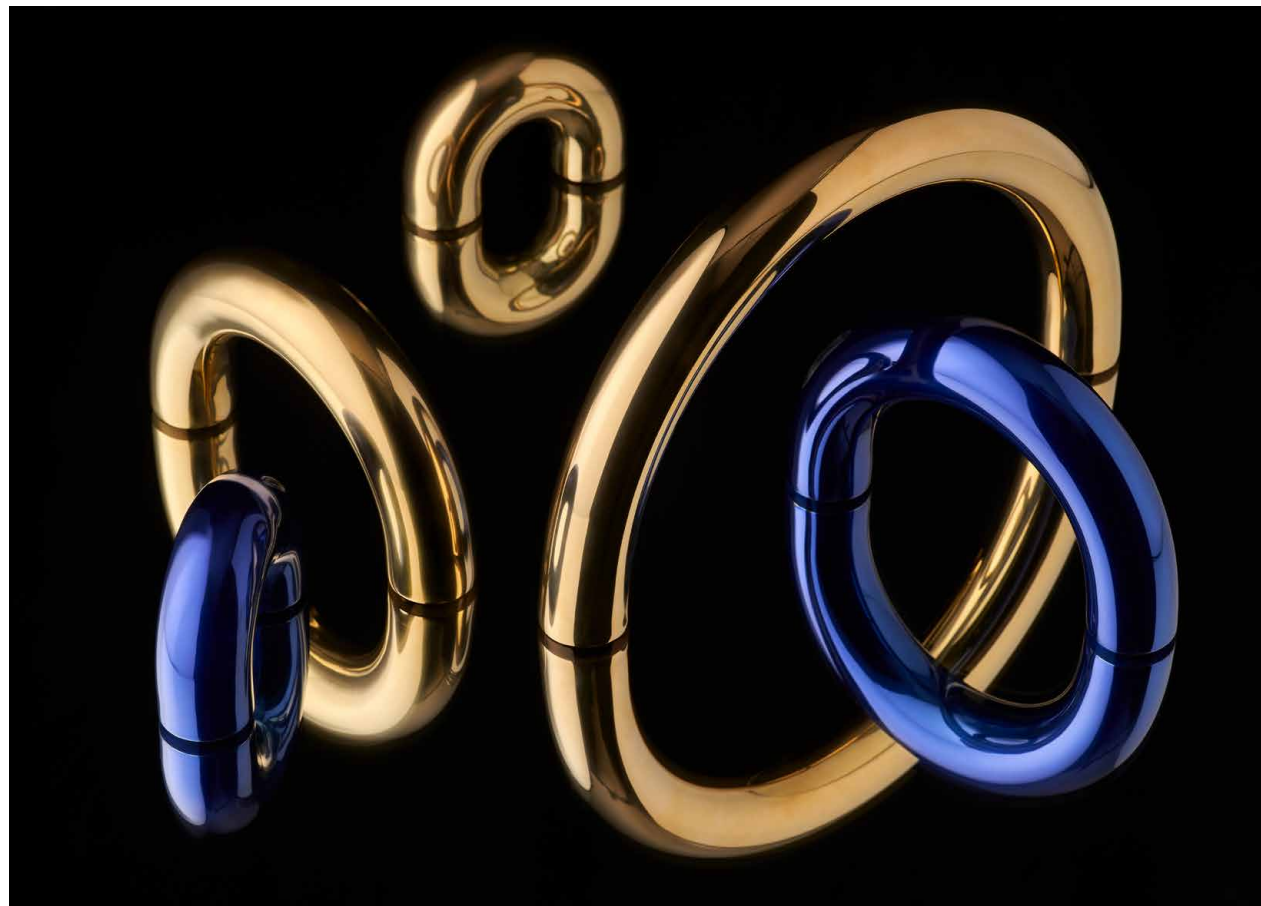
Colour and finish: beyond stainless steel

New collections tend to be launched in stainless steel, both for its practicality and universality. But when Design Research Studio lined up finish and colour samples for Fat, they loved them all. Satin stainless steel is joined by PVD polished brass, as well as electric blue and PVD charcoal – the team saw that with this palette of materials and colours in play, the collection addressed many different project types because of the way each changes the character of the pieces.



“d line has a phenomenal history, and we’re honoured to be a part of its illustrious series of architectural design handles. Our brand principles also align very closely with d line’s: the emphasis on quality, endurance, innovation and sustainability. We’re pleased to be the first designer outside Denmark to have a collaboration with the brand.”

– Tom Dixon



Considering d line’s renowned streamlined aesthetic, the collaboration with Tom Dixon is a bold move. The Fat Collection is a new exploration for d line that disrupts a product category otherwise considered straight-forward and conservative. This is why making a bold statement in both silhouette and colour palette could only happen in partnership with one of the greatest designers of our time.

FAT
COLLECTION



Fat lever handle

Item number	Description	Dimension
950010001	Satin stainless steel	87x51x24 mm, Ø70x17.5 mm rose
950010002	PVD charcoal	87x51x24 mm, Ø70x17.5 mm rose
950010003	Electric blue	87x51x24 mm, Ø70x17.5 mm rose
950010004	PVD polished brass	87x51x24 mm, Ø70x17.5 mm rose



Fat key escutcheon

Item number	Description	Dimension
950010001	W key, satin stainless steel	Ø277x8 mm, Ø70x17.5 mm rose
950010002	W key, PVD charcoal	Ø277x8 mm, Ø70x17.5 mm rose
950010003	W key, electric blue	Ø277x8 mm, Ø70x17.5 mm rose
950010004	W key, PVD polished brass	Ø277x8 mm, Ø70x17.5 mm rose



Fat toilet indicator

Item number	Description	Dimension
950020100	5/8" w/o, satin stainless steel	CC30 mm, Ø70x17.5 mm rose
950020101	5/8" w/o, PVD charcoal	CC30 mm, Ø70x17.5 mm rose
950020102	5/8" w/o, electric blue	CC30 mm, Ø70x17.5 mm rose
950020103	5/8" w/o, PVD polished brass	CC30 mm, Ø70x17.5 mm rose
950020201	5/8" w/o, satin stainless steel	CC38 mm, Ø70x17.5 mm rose
950020202	5/8" w/o, PVD charcoal	CC38 mm, Ø70x17.5 mm rose
950020203	5/8" w/o, electric blue	CC38 mm, Ø70x17.5 mm rose
950020204	5/8" w/o, PVD polished brass	CC38 mm, Ø70x17.5 mm rose
950020301	5/8" w/o, toilet indicator, satin stainless steel	CC30 mm, Ø70x17.5 mm rose
950020302	5/8" w/o, toilet indicator, PVD charcoal	CC30 mm, Ø70x17.5 mm rose
950020303	5/8" w/o, toilet indicator, electric blue	CC30 mm, Ø70x17.5 mm rose
950020304	5/8" w/o, toilet indicator, PVD polished brass	CC30 mm, Ø70x17.5 mm rose
950020401	5/8" w/o, toilet indicator, satin stainless steel	CC38 mm, Ø70x17.5 mm rose
950020402	5/8" w/o, toilet indicator, PVD charcoal	CC38 mm, Ø70x17.5 mm rose
950020403	5/8" w/o, toilet indicator, electric blue	CC38 mm, Ø70x17.5 mm rose
950020404	5/8" w/o, toilet indicator, PVD polished brass	CC38 mm, Ø70x17.5 mm rose



Fat thumb turn

Item number	Description	Dimension
950030000	Satin stainless steel	CC277x30 mm, Ø70x17.5 mm rose
950030001	PVD charcoal	CC277x30 mm, Ø70x17.5 mm rose
950030002	Electric blue	CC277x30 mm, Ø70x17.5 mm rose
950030003	PVD polished brass	CC277x30 mm, Ø70x17.5 mm rose



Fat pull handle S

Item number	Description	Dimension
950060010	Thread, satin stainless steel	70x50x35 mm
950060011	Thread, PVD charcoal	70x50x35 mm
950060012	Thread, electric blue	70x50x35 mm
950060013	Thread, PVD polished brass	70x50x35 mm
950060014	Bush, satin stainless steel	70x50x35 mm
950060015	Bush, PVD charcoal	70x50x35 mm
950060016	Bush, electric blue	70x50x35 mm
950060017	Bush, PVD polished brass	70x50x35 mm



Fat pull handle M

Item number	Description	Dimension
950060140	Thread, satin stainless steel	140x100x35 mm
950060141	Thread, PVD charcoal	140x100x35 mm
950060142	Thread, electric blue	140x100x35 mm
950060143	Thread, PVD polished brass	140x100x35 mm
950060144	Bush, satin stainless steel	140x100x35 mm
950060145	Bush, PVD charcoal	140x100x35 mm
950060146	Bush, electric blue	140x100x35 mm
950060147	Bush, PVD polished brass	140x100x35 mm



Fat pull handle L

Item number	Description	Dimension
950060210	Thread, satin stainless steel	210x150x35 mm
950060211	Thread, PVD charcoal	210x150x35 mm
950060212	Thread, electric blue	210x150x35 mm
950060213	Thread, PVD polished brass	210x150x35 mm
950060214	Bush, satin stainless steel	210x150x35 mm
950060215	Bush, PVD charcoal	210x150x35 mm
950060216	Bush, electric blue	210x150x35 mm
950060217	Bush, PVD polished brass	210x150x35 mm



Fat flush pull handle, oval

Item number	Description	Dimension
950040000	Satin stainless steel	140x70x25 mm
950040001	PVD charcoal	140x70x25 mm
950040002	Electric blue	140x70x25 mm
950040003	PVD polished brass	140x70x25 mm



Fat flush pull handle, round

Item number	Description	Dimension
950040000	Satin stainless steel	70x25 mm
950040001	PVD charcoal	70x25 mm
950040002	Electric blue	70x25 mm
950040003	PVD polished brass	70x25 mm



Fat door stop

Item number	Description	Dimension
950040000	Satin stainless steel	65x45 mm
950040001	PVD charcoal	65x45 mm
950040002	Electric blue	65x45 mm
950040003	PVD polished brass	65x45 mm



Fat PZ cylinder escutcheon

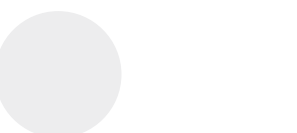
Item number	Description	Dimension
950030000	Internal, 6 mm, satin stainless steel	CC30x40 mm, Ø70x17.5 mm rose
950030001	Internal, 6 mm, PVD charcoal	CC30x40 mm, Ø70x17.5 mm rose
950030002	Internal, 6 mm, electric blue	CC30x40 mm, Ø70x17.5 mm rose
950030003	Internal, 6 mm, PVD polished brass	CC30x40 mm, Ø70x17.5 mm rose
950030004	Internal, 8 mm, satin stainless steel	CC35x40 mm, Ø70x17.5 mm rose
950030005	Internal, 8 mm, PVD charcoal	CC35x40 mm, Ø70x17.5 mm rose
950030006	Internal, 8 mm, electric blue	CC35x40 mm, Ø70x17.5 mm rose
950030007	Internal, 8 mm, PVD polished brass	CC35x40 mm, Ø70x17.5 mm rose
950030008	External, 6 mm, satin stainless steel	CC30x40 mm, Ø70x17.5 mm rose
950030009	External, 6 mm, PVD charcoal	CC30x40 mm, Ø70x17.5 mm rose
950030010	External, 6 mm, electric blue	CC30x40 mm, Ø70x17.5 mm rose
950030011	External, 6 mm, PVD polished brass	CC30x40 mm, Ø70x17.5 mm rose
950030012	External, 8 mm, satin stainless steel	CC35x40 mm, Ø70x17.5 mm rose
950030013	External, 8 mm, PVD charcoal	CC35x40 mm, Ø70x17.5 mm rose
950030014	External, 8 mm, electric blue	CC35x40 mm, Ø70x17.5 mm rose
950030015	External, 8 mm, PVD polished brass	CC35x40 mm, Ø70x17.5 mm rose
950030016	External, 11 mm, satin stainless steel	CC30x40 mm, Ø70x17.5 mm rose
950030017	External, 11 mm, PVD charcoal	CC30x40 mm, Ø70x17.5 mm rose
950030018	External, 11 mm, electric blue	CC30x40 mm, Ø70x17.5 mm rose
950030019	External, 11 mm, PVD polished brass	CC30x40 mm, Ø70x17.5 mm rose
950030020	External, 13 mm, satin stainless steel	CC30x40 mm, Ø70x17.5 mm rose
950030021	External, 13 mm, PVD charcoal	CC30x40 mm, Ø70x17.5 mm rose
950030022	External, 13 mm, electric blue	CC30x40 mm, Ø70x17.5 mm rose
950030023	External, 13 mm, PVD polished brass	CC30x40 mm, Ø70x17.5 mm rose
950030024	External, 16 mm, satin stainless steel	CC30x40 mm, Ø70x17.5 mm rose
950030025	External, 16 mm, PVD charcoal	CC30x40 mm, Ø70x17.5 mm rose
950030026	External, 16 mm, electric blue	CC30x40 mm, Ø70x17.5 mm rose
950030027	External, 16 mm, PVD polished brass	CC30x40 mm, Ø70x17.5 mm rose
950030028	External, 18 mm, satin stainless steel	CC30x40 mm, Ø70x17.5 mm rose
950030029	External, 18 mm, PVD charcoal	CC30x40 mm, Ø70x17.5 mm rose
950030030	External, 18 mm, electric blue	CC30x40 mm, Ø70x17.5 mm rose
950030031	External, 18 mm, PVD polished brass	CC30x40 mm, Ø70x17.5 mm rose
950030032	External, 21 mm, satin stainless steel	CC30x40 mm, Ø70x17.5 mm rose
950030033	External, 21 mm, PVD charcoal	CC30x40 mm, Ø70x17.5 mm rose
950030034	External, 21 mm, electric blue	CC30x40 mm, Ø70x17.5 mm rose
950030035	External, 21 mm, PVD polished brass	CC30x40 mm, Ø70x17.5 mm rose

Fat scandinavian cylinder escutcheon

Item number	Description	Dimension
950030040	Internal, 6 mm, satin stainless steel	CC30x50 mm, Ø70x17.5 mm rose
950030041	Internal, 6 mm, PVD charcoal	CC30x50 mm, Ø70x17.5 mm rose
950030042	Internal, 6 mm, electric blue	CC30x50 mm, Ø70x17.5 mm rose
950030043	Internal, 6 mm, PVD polished brass	CC30x50 mm, Ø70x17.5 mm rose
950030044	Internal, 8 mm, satin stainless steel	CC35x50 mm, Ø70x17.5 mm rose
950030045	Internal, 8 mm, PVD charcoal	CC35x50 mm, Ø70x17.5 mm rose
950030046	Internal, 8 mm, electric blue	CC35x50 mm, Ø70x17.5 mm rose
950030047	Internal, 8 mm, PVD polished brass	CC35x50 mm, Ø70x17.5 mm rose
950030048	External, 6 mm, satin stainless steel	CC30x50 mm, Ø70x17.5 mm rose
950030049	External, 6 mm, PVD charcoal	CC30x50 mm, Ø70x17.5 mm rose
950030050	External, 6 mm, electric blue	CC30x50 mm, Ø70x17.5 mm rose
950030051	External, 6 mm, PVD polished brass	CC30x50 mm, Ø70x17.5 mm rose
950030052	External, 8 mm, satin stainless steel	CC35x50 mm, Ø70x17.5 mm rose
950030053	External, 8 mm, PVD charcoal	CC35x50 mm, Ø70x17.5 mm rose
950030054	External, 8 mm, electric blue	CC35x50 mm, Ø70x17.5 mm rose
950030055	External, 8 mm, PVD polished brass	CC35x50 mm, Ø70x17.5 mm rose
950030056	External, 11 mm, satin stainless steel	CC30x50 mm, Ø70x17.5 mm rose
950030057	External, 11 mm, PVD charcoal	CC30x50 mm, Ø70x17.5 mm rose
950030058	External, 11 mm, electric blue	CC30x50 mm, Ø70x17.5 mm rose
950030059	External, 11 mm, PVD polished brass	CC30x50 mm, Ø70x17.5 mm rose
950030060	External, 13 mm, satin stainless steel	CC30x50 mm, Ø70x17.5 mm rose
950030061	External, 13 mm, PVD charcoal	CC30x50 mm, Ø70x17.5 mm rose
950030062	External, 13 mm, electric blue	CC30x50 mm, Ø70x17.5 mm rose
950030063	External, 13 mm, PVD polished brass	CC30x50 mm, Ø70x17.5 mm rose
950030064	External, 16 mm, satin stainless steel	CC30x50 mm, Ø70x17.5 mm rose
950030065	External, 16 mm, PVD charcoal	CC30x50 mm, Ø70x17.5 mm rose
950030066	External, 16 mm, electric blue	CC30x50 mm, Ø70x17.5 mm rose
950030067	External, 16 mm, PVD polished brass	CC30x50 mm, Ø70x17.5 mm rose
950030068	External, 18 mm, satin stainless steel	CC30x50 mm, Ø70x17.5 mm rose
950030069	External, 18 mm, PVD charcoal	CC30x50 mm, Ø70x17.5 mm rose
950030070	External, 18 mm, electric blue	CC30x50 mm, Ø70x17.5 mm rose
950030071	External, 18 mm, PVD polished brass	CC30x50 mm, Ø70x17.5 mm rose
950030072	External, 21 mm, satin stainless steel	CC30x50 mm, Ø70x17.5 mm rose
950030073	External, 21 mm, PVD charcoal	CC30x50 mm, Ø70x17.5 mm rose
950030074	External, 21 mm, electric blue	CC30x50 mm, Ø70x17.5 mm rose
950030075	External, 21 mm, PVD polished brass	CC30x50 mm, Ø70x17.5 mm rose

Fat door knocker

Item number	Description	Dimension
950050000	Satin stainless steel	140x104x40 mm
950050001	PVD charcoal	140x104x40 mm
950050002	Electric blue	140x104x40 mm
950050003	Polished brass	140x104x40 mm



Tom Dixon collection

The Fat collection is available in charcoal, electric blue, PVD polished brass, as well as satin stainless steel.

As with most of our products, this collection is sustainably produced in non-corrosive AISI 316 stainless steel, as the strongest, most hard wearing steel for these types of purposes.

Today our commitment to sustainability exists as a 20-year product guarantee, and a five-year guarantee on the colour finish. This commitment extends to responsible sourcing of our steel, to low-emission hand assembly and to a lean factory that never produces more than what is needed.



d line

d line

Jyllingevej 59,kld.
2720 København
Denmark

T +45 72 17 01 38
E info@dline.com

dline.com