

# TE5 Vet

Touch Screen Ultrasound System  
Simple | Focused | Smart



Simple | Focused | Smart



# Simple experience with intuitive workflow

## High Definition Touch Screen

State-of-the-art fingertip operation, even with gel-covered gloves, provides simple control and setting optimization at the swipe of a finger.



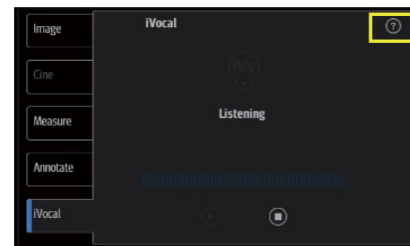
## Gesture-Based Workflow

Gesture controls are the most efficient way to satisfy all clinical functions, and also allow flexibility of user-programming.

# Superior performance with focused features

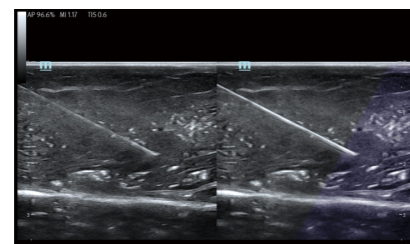
## iVocal

Based on Artificial Intelligence voice recognition technology, iVocal allows you to remotely control the system by simple yet extensive voice commands through a wireless microphone, further enhancing ultrasound users' comfort and ergonomics during the entire procedure., supporting Adding, Deleting and Renaming voice commands for user-defined command list.

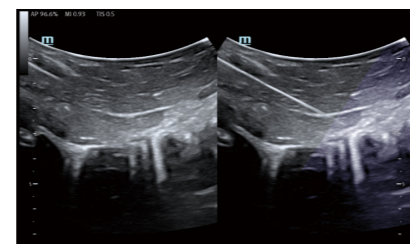


## iNeedle+

2nd generation needle enhancement technology for easy needle approach to target and enhanced accuracy for guided procedures.



iNeedle+ on linear



iNeedle+ on convex

# Smart design with innovative ergonomics

15" touch screen with anti-glare and wide viewing angle

Transducer cable management for cord longevity and ease of use



Built-in battery provides long battery life



Built-in wireless network



Height adjustable smart trolley

