



# USER GUIDE

# Dear you,

From all us here at team Sepura, thank you so much for supporting us. When our founder, Victor, was hunched over under his kitchen sink disassembling his plumbing after a bad ordeal with potato peels and a garbage disposal, he knew there must be a better way of disposing of food waste.

Thousands of conversations, tens of thousands of man hours, years of tinkering, and support from customers like you have gotten us to this point. Now it's time for you to step into the world we've been living in for the past few years: the world of Sepura.

I'm sure we don't need to tell you this, but when food waste is improperly disposed of, it typically ends up in landfills and produces a LOT of greenhouse gases like methane and carbon dioxide.

By choosing Sepura, you're doing your part to divert that food waste away from landfills. Thank you.

- Team Sepura

---

## In the next 12 months...

**540,000**

kg of CO<sub>2</sub> emissions diverted by Sepura

**240,000**

kg food waste diverted from landfills by Sepura

**1**

happier planet

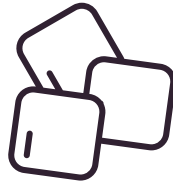
# IMPORTANT SAFETY INSTRUCTIONS & WARNINGS

---



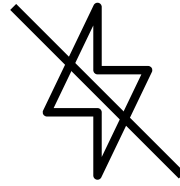
## Don't Reach

Do not put your hands down the drain. While Sepura doesn't have any blades, fingers can still get pinched if caught in the auger (and trust us, it hurts).



## Ice Cubes

If ice cubes are placed in your sink, make sure these melt before running Sepura, otherwise they will create unwanted water in the Collection Center.



## Lost Power

If Sepura loses power, make sure the valve is closed by reaching under the carbon filter and manually closing the valve. (see Troubleshooting page)



## Chemicals

Be mindful of what you pour into your drain as it could end up in your compost. If you pour in a toxic chemical, make sure to rinse carefully before running Sepura.

## Suggested Practices

---

### Liquids



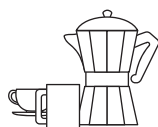
Refrain from pouring water or liquids down the drain as Sepura is running to avoid getting liquids into the Collection Centre.

### Grease and Oils



Sepura can handle hardened grease. If still liquid, or in the case of cooled oils, place directly into the Collection Centre to avoid sending it down the drain.

### Coffee Grinds



Empty coffee grinds directly into the Collection Centre to avoid sending it down the drain.

### Paper Towel



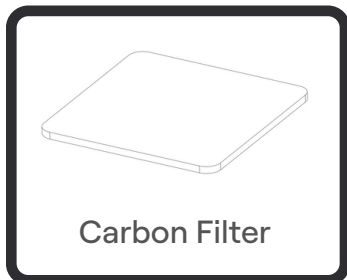
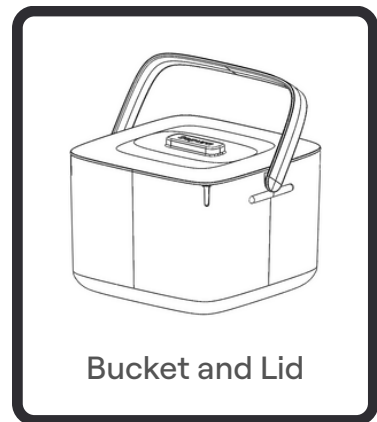
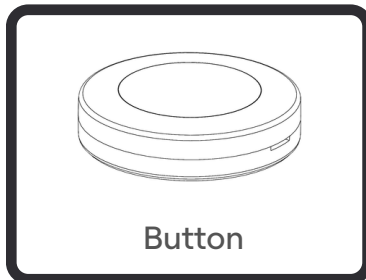
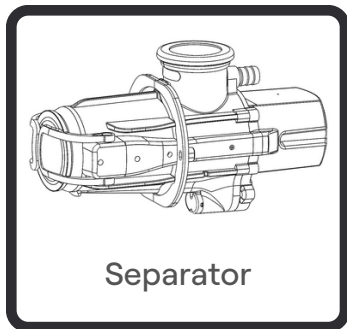
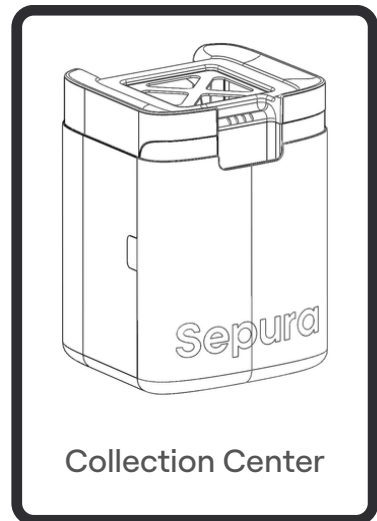
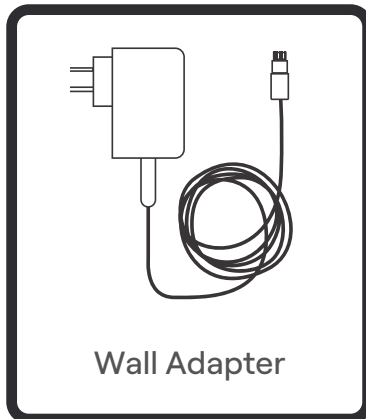
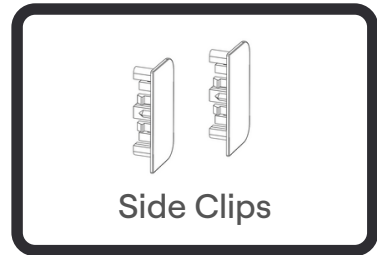
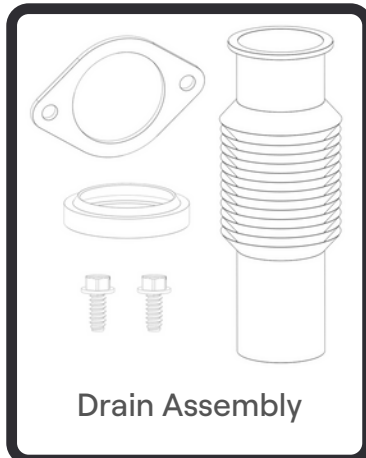
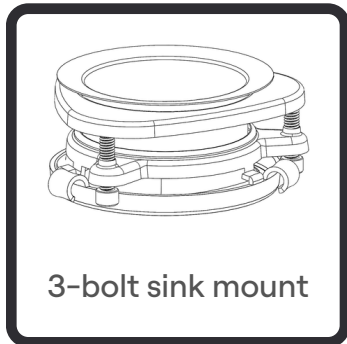
While Sepura can process paper towel, occasionally wet paper towel will get stuck until something else knocks it free.

**SAVE THESE INSTRUCTIONS**

# Parts Included

---

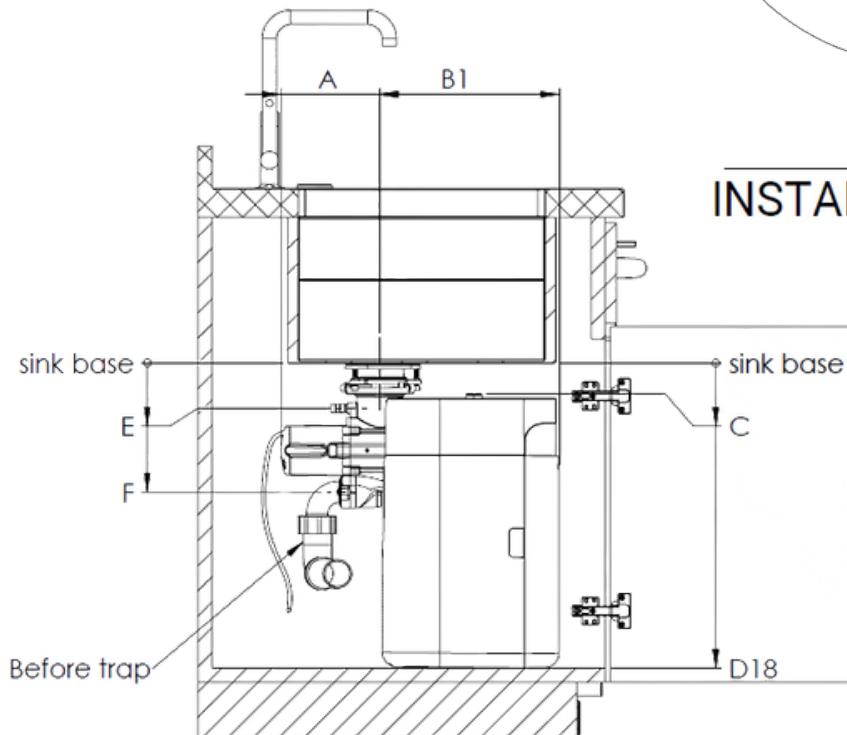
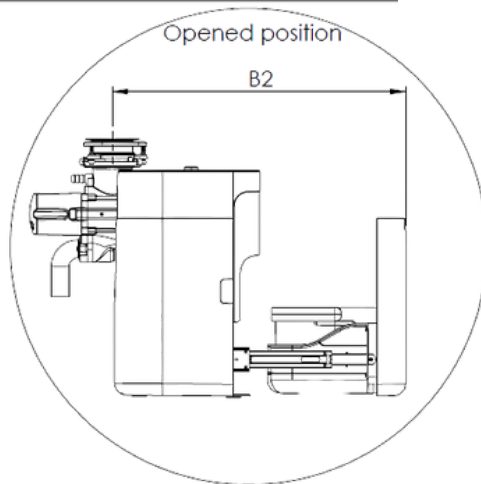
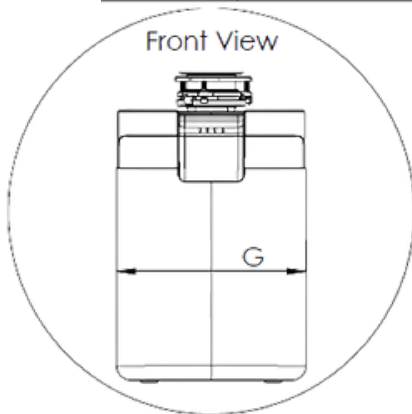
In addition to the beautiful Sepura unit you've received, there are a few parts you need to make sure that Sepura is installed correctly.



# Dimensions

It's important to create enough room for Sepura under your sink before beginning installation.

Dimension	Value	Description
A	175mm   6.9in	drain center to furthest point back
B1	318mm   12.5in	drain center to furthest point of collection center (closed and opened)
B2	606mm   23.8in	
C	56mm   2.2in	bottom of sink to top of collection center
D1 - D22	441mm   17.3in 567mm   22.3in	space needed under sink (adjustable)
E	80mm   3.2in	bottom of sink to dishwasher drain adapter
F	230mm   9.0in	bottom of sink to sepura drain outlet
G	336mm   13.2in	width of collection center



## Sepura Home INSTALLATION DRAWINGS

SCALE: 1:10

# Table of Contents

---

Introduction .....	1
Warnings .....	2
Parts Included .....	3
Dimensions .....	4

## Installation

### Removing an existing garbage disposal?

Removing Garbage Disposal .....	6-7
---------------------------------	-----

### Ready to install the 3-bolt sink mount?

Installing Mount .....	7-8
------------------------	-----

### Ready to install Sepura?

Installing Sepura .....	9-11
Turning on Sepura .....	12-13
Installing Sepura's Button .....	14

## Using Sepura

Using Sepura .....	15
Status Indicator Lights .....	16-18
Regular Use .....	16
Booting Up .....	16
Warnings .....	17
Software Updates .....	17-18
Bin Calibration .....	18
Maintenance .....	19
Troubleshooting .....	20

# Removing Garbage Disposal

## WARNING

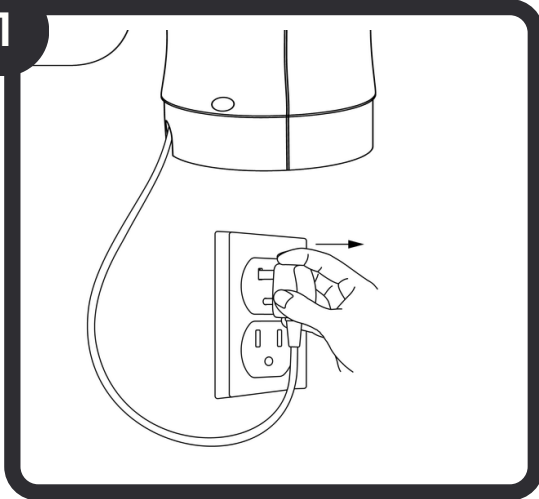
### Shock Hazard

Turn off electric power at fuse box or circuit breaker.

## CAUTION

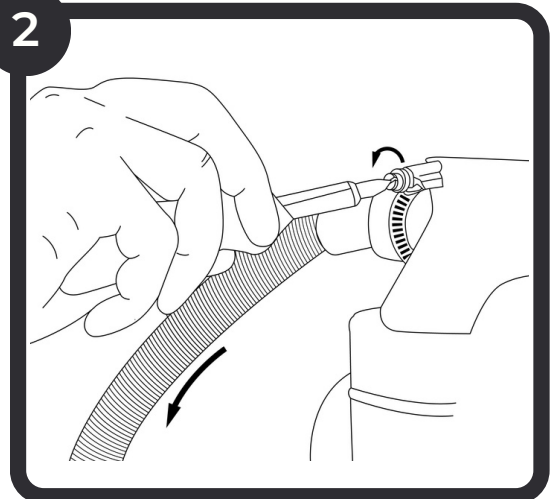
Clean drain line before installing Sepura. Failure to do so may result in drain line blockage.

1



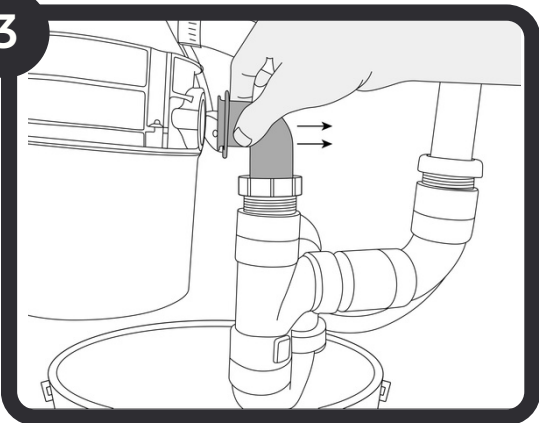
Unplug your old garbage disposal unit.

2



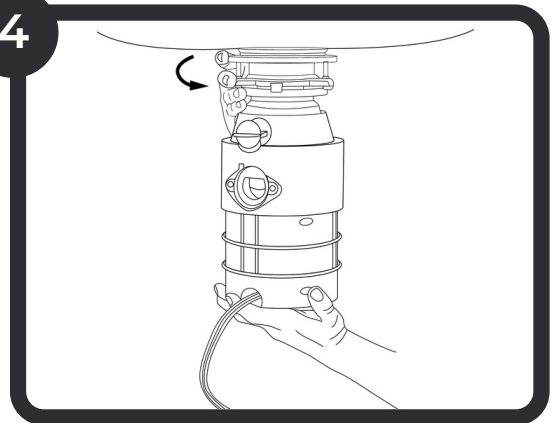
Disconnect the dishwasher drain tube (if installed).

3



Disconnect the drain pipe from the rest of the plumbing (there might be some water that drips down at this stage, so have a bucket handy).

4



Twist the sink mount ring attached to free the garbage disposal (if stuck, use your screwdriver inside the loops to create leverage). The disposal unit is heavy, so prepare for that to avoid damage to your plumbing.

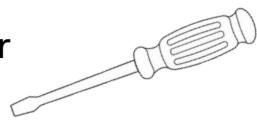
**5**

Wiggle the unit free and remove it from under your sink.

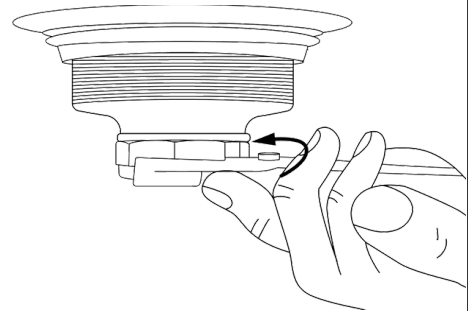
## Installing Mount

### WHAT YOU'LL NEED

Screwdriver

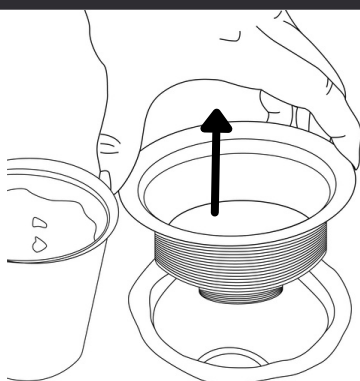


Plumber's Putty

**A**

If needed, remove your sink's previous strainer by:

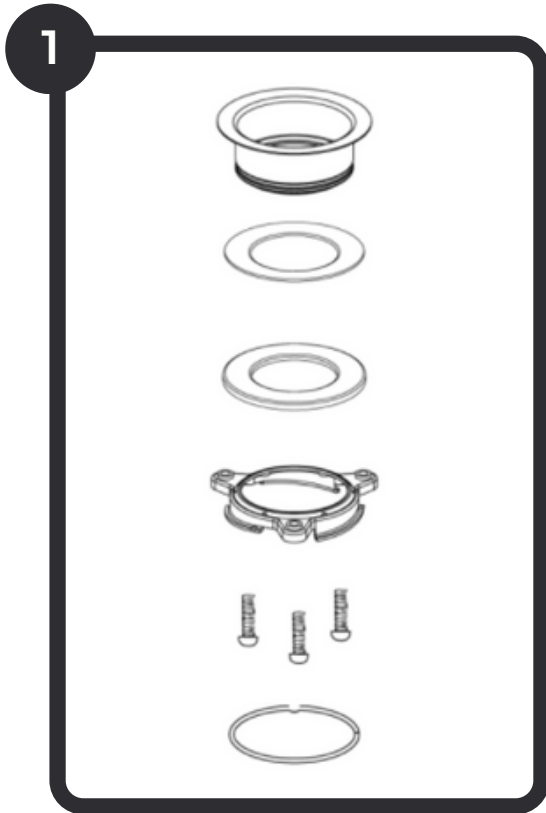
- Making sure all plumbing below is disconnected and out of the way,
- Unscrewing the strainer nut below the sink to free up the strainer flange for removal.

**B**

Remove the flange by pushing up underneath it and then removing it from inside the sink. Make sure any food waste and glue residue is wiped clean and dried before continuing.



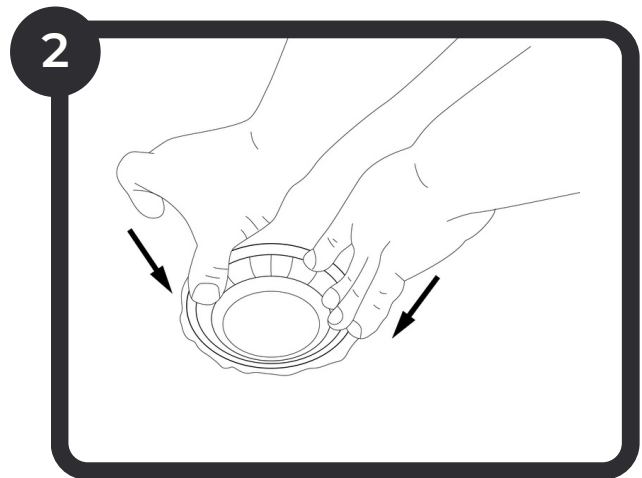
# Installing Mount (continued)



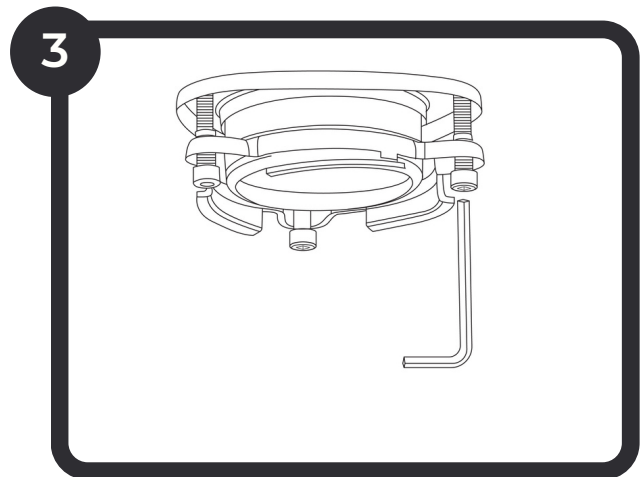
You can now grab the 3-bolt sink mount from the box. Separate the flange by loosening the three bolts and removing the snap ring.

## TIP

You can remove the snap ring from the sink mount with a flat head screwdriver.



Roll up the plumber's putty into a thin, long roll and apply around the bottom side of the flange ring. Center the flange in your sink and press down firmly to create a seal.

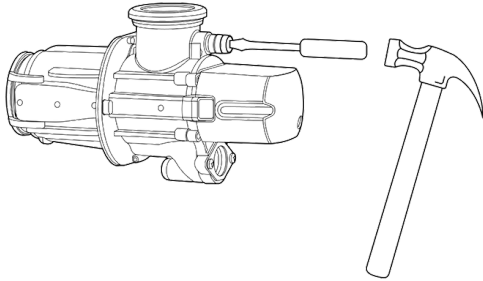


Go underneath your sink and reassemble the parts of the mount as they were before. Use the snap ring to lock them into place. Tighten the 3 bolts by increments like a car tire to create an even space all around.

# Installing Sepura

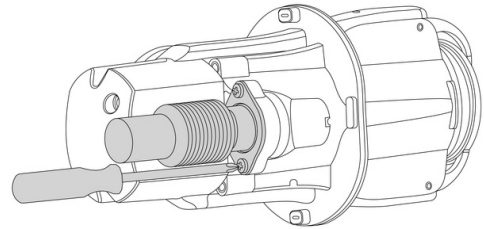
---

1



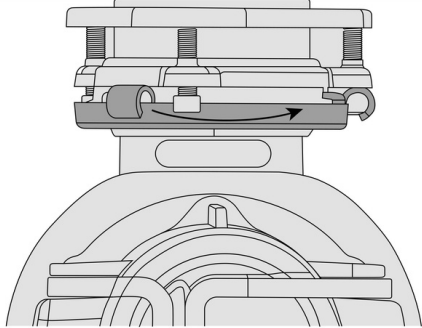
(OPTIONAL) Grab Sepura's Separator component and if you have a dishwasher drain, knock out the plug with your hammer and screwdriver.

2



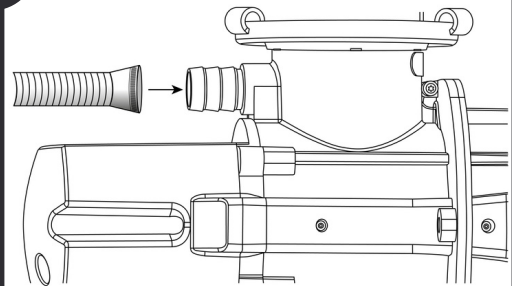
Fasten the flexible drain tube at the bottom of the Separator, making sure it is watertight. (Bolts might squeak when fastening, this is normal.)

3



Position the Separator under your sink with the valve door and latch facing you. Connect it to your sink by twisting the bottom ring onto the 3-bolt sink mount. Make sure the Separator's gasket is in place (in between the sink mount and its drain opening) and to tighten the mount's ring all the way up to the notch, otherwise leaking can occur. Then, connect the flexible drain tube to your plumbing, making sure it is watertight.

4

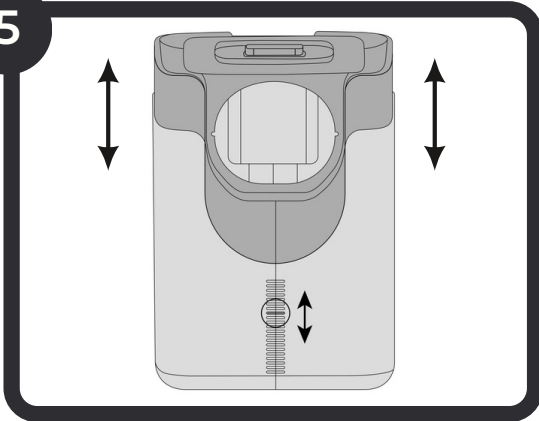


(OPTIONAL) If you have a dishwasher drain, connect this to the Separator's dishwasher drain inlet. Make sure the plug was knocked out in step 1.

# Installing Sepura (continued)

---

5

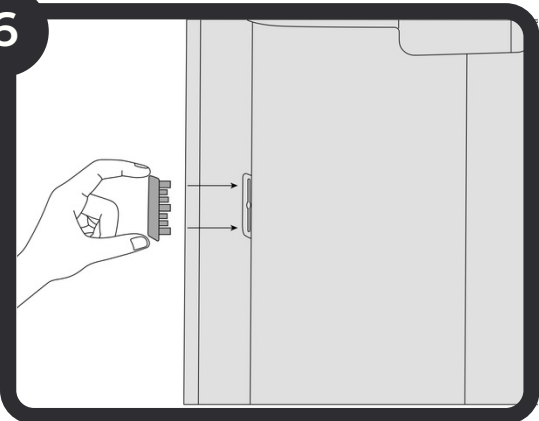


Now, grab Sepura's Collection Center, remove the bucket and lid inside, and slide into place with the door facing you. Adjust its height by sliding the top compartment until the Separator component fits inside the back opening.

## TIP

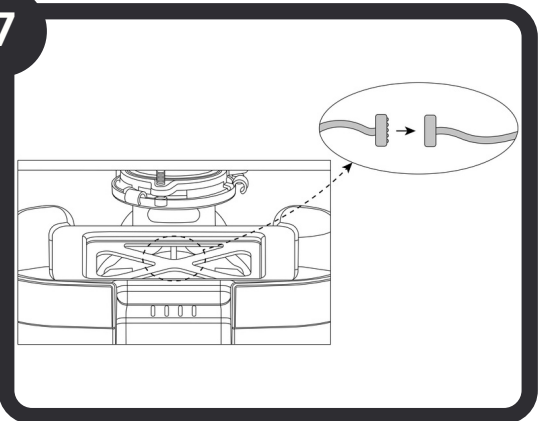
Remove the entire door/tray of the Collection Center with the quick-release tabs on the rails so it is easier to work with.

6



Once a height is reached where the Separator can fit through the back opening of the Collection Center freely, lock the height in place with the side clips.

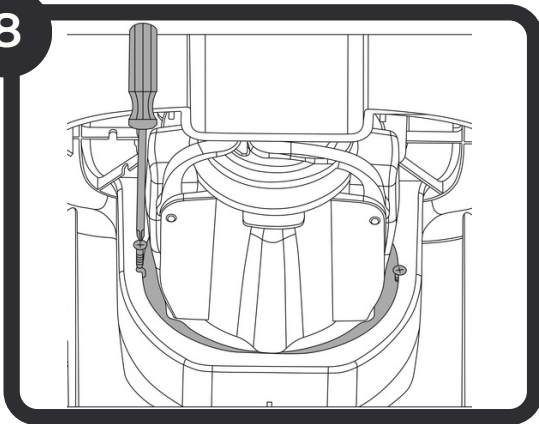
7



Press the Collection Center up against the Separator's foam ring. Then, reach in through the opening at the top and connect the data cable.

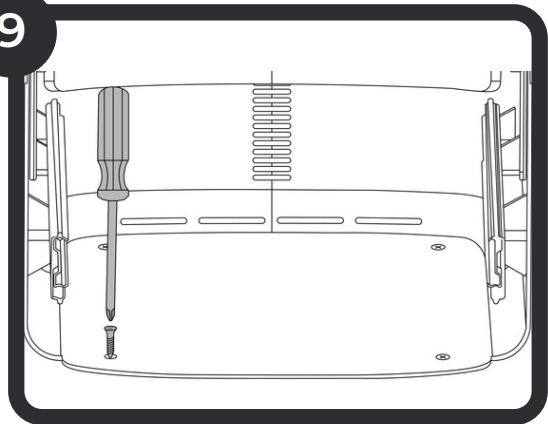
# Installing Sepura (continued)

8



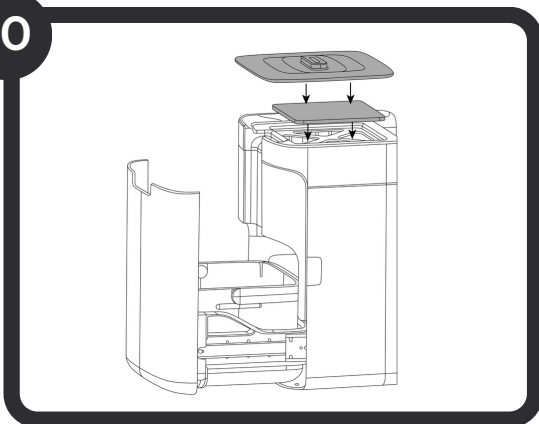
Make sure the Collection Center is pressed up against the Separator's foam ring to create an air-tight seal, then use the 2 small screws provided to fasten the two together.

9



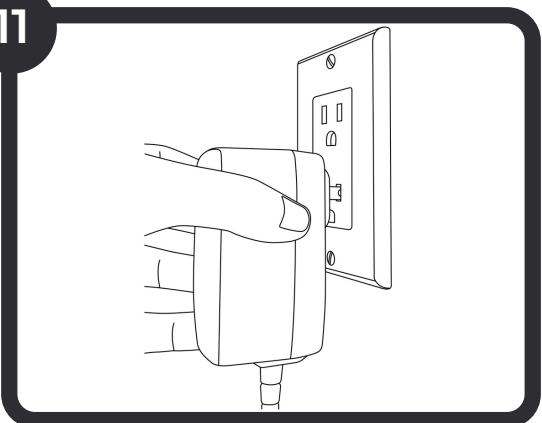
Secure the Collection Center into the baseboard with the 4 wood screws left.

10



Re-install the door if you removed it, and place the bucket inside. Remove the carbon filter from its packaging and place on top of the Collection Center. Remember to remove the lid from the bucket and to place it on top of the carbon filter as well.

11

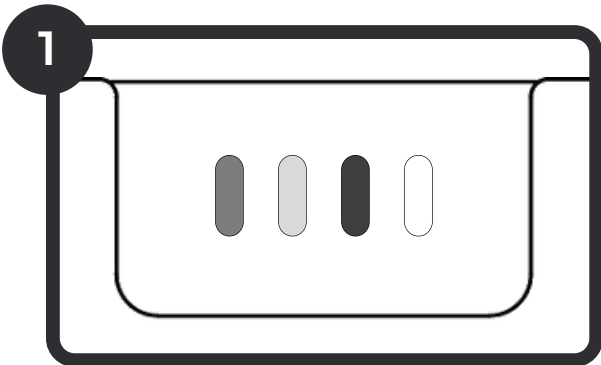


Plug Sepura in and make sure your wall socket has power (this can now stay on indefinitely).

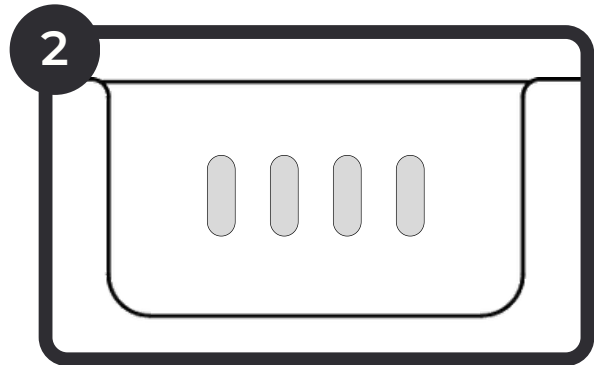
## CHECKPOINT

The lights on the front of the Collection Center should now be on! Please follow the next steps to finish setting up Sepura.

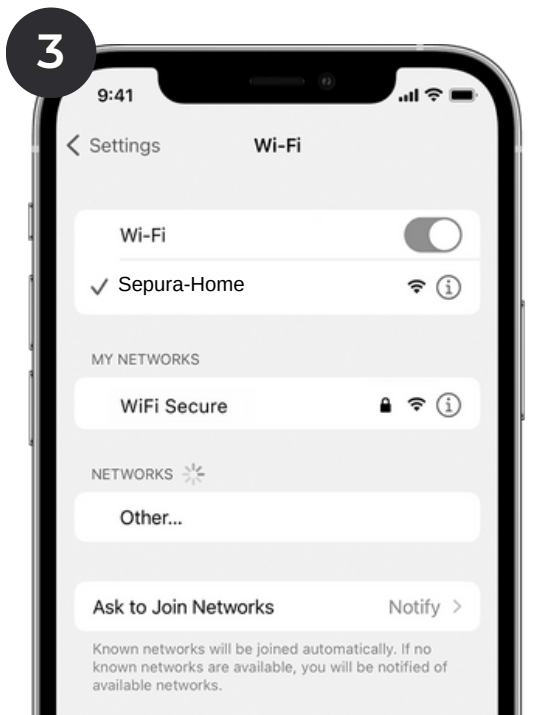
# Turning on Sepura



Once plugged in, you will notice a multi-colored light animation display on the Collection Center's LED lights.



Sepura will then create an Access Point to connect to Wi-Fi. Its progress will be shown by the lights loading in green. Once the Access Point is ready, the lights will blink slowly green.

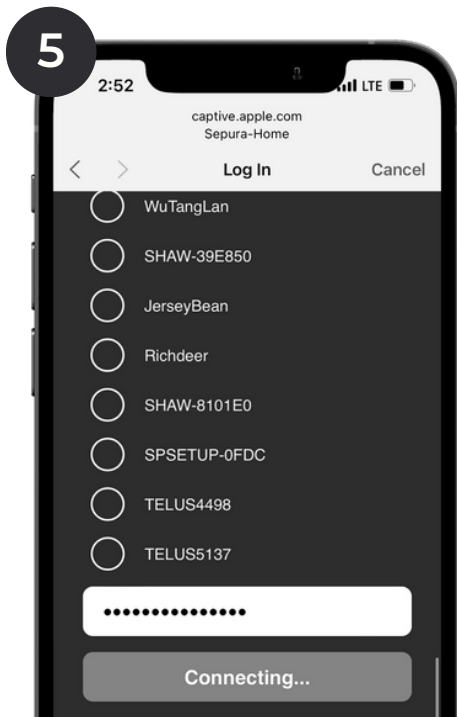


Next, connect Sepura to your home Wi-Fi by going into the Wi-Fi settings of your phone and looking for the Sepura-Home network. Depending on different home networks, this may take up to 10 minutes to be visible.

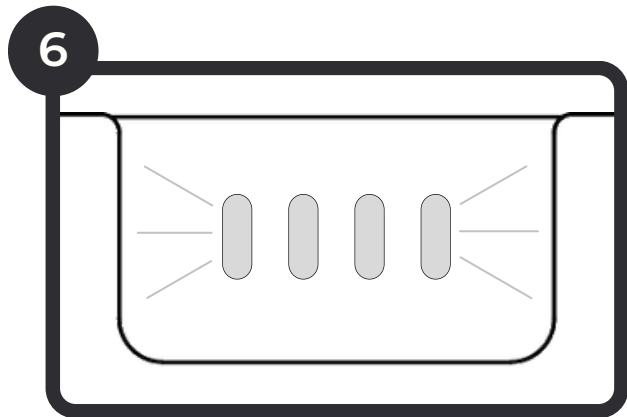


Once connected, this will open our splash page. If this does not open automatically, check your notifications or type in your modem's IP address in the search bar of your browser (e.g. 192.168.1.1). This should automatically redirect you to our splash page.

# Turning on Sepura



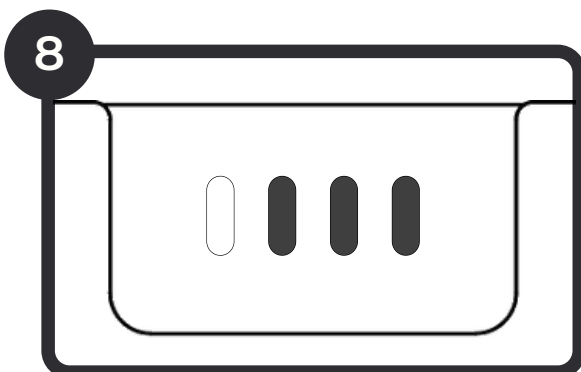
Once on the splash page, hit the "Scan Wi-Fi" button, this will display a list of all available networks. Select your home Wi-Fi (note that only 2.4GHz is accepted), scroll down and enter your Wi-Fi password and hit Connect.



Once connected, the lights on the Collection Center will flash green and a message will also appear on the splash page indicating a successful connection.



Next, it is important to calibrate the sensors onboard the Collection Center to its newly adjusted height so it can accurately display how full it is. While still on the Splash Page, hit the "Bin Calibration" button to do that.

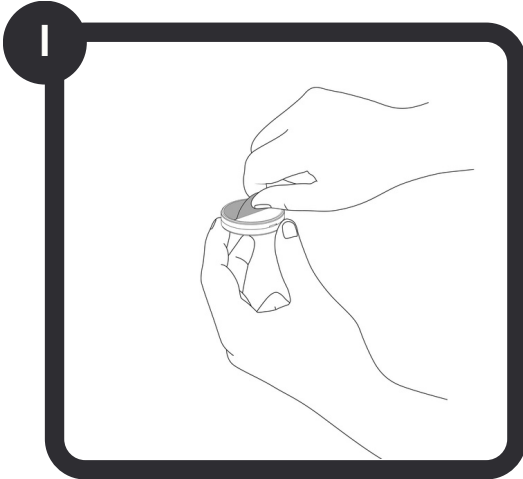


During calibration, the lights will progressively light up white. Once successful, the first light will flash white, before staying on to indicate it is now in Normal Mode.

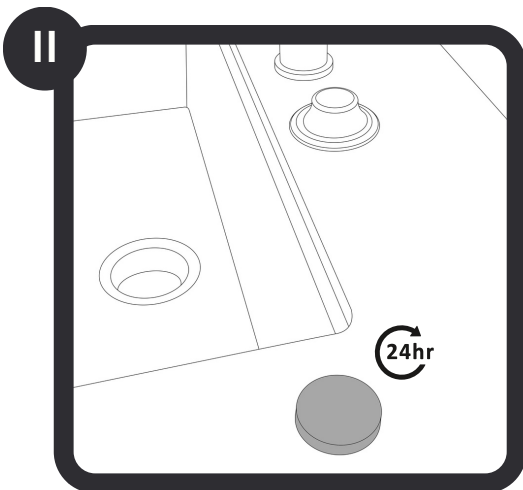
# Installing Sepura's Button

## CHECKPOINT

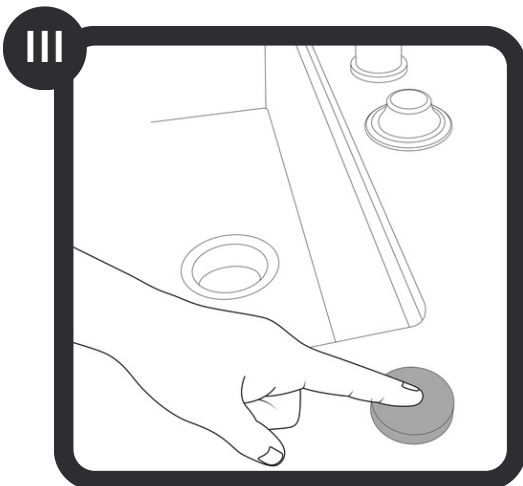
Decide on where you'd like to place your button. Once placed, you can't move it. Make sure the area is wiped clean and completely dry.



Once the area is completely dry, remove the adhesive backing from the button.



Press the button, adhesive side down, firmly into place. Wait 24 hours before wetting the area again.



Test it out! Your Sepura unit should now be ready to use.

# Using Sepura

Your Sepura unit is always learning and improving through over-the-air updates. Please visit [sepurahome.com/guide](https://sepurahome.com/guide) for the most up to date information.

## PLEASE NOTE

You do not need to run water while Sepura is turned on.

## CAUTION – INJURY RISK

While Sepura has no blades, having your finger get caught can cause injury. Do not reach down the drain with your bare hands.

## Normal Mode

To run Sepura, simply click the button. This will open the separator's valve and your unit will begin the separation process. Sepura will turn itself off after a few seconds, or you can click the button again to turn it off sooner.

## Flooded Mode

If you try to turn Sepura on while the water level in your sink is too high, Sepura will keep its valve closed to prevent liquids from entering the Collection Center. Once enough liquid has drained, Sepura will then start the separation process on its own.

## Stuck Mode

If too much food waste or a solid item like a fork gets accidentally dropped into the Separator, Sepura will try to free itself. If that fails, it will back up, stop and beep. After you hear the beep, you can then remove the item.

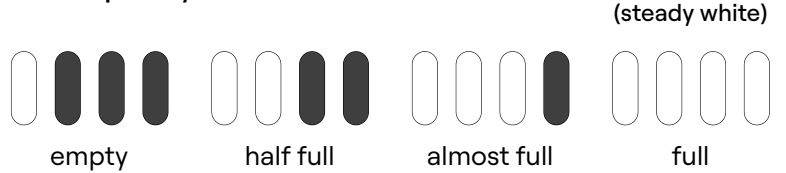


# Status Indicator Lights

---

## Regular Use

### Bin Capacity

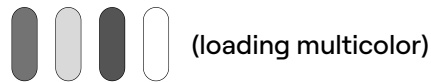


White lights indicate how full the bin is inside the Collection Center.

---

## Booting Up

### Booting



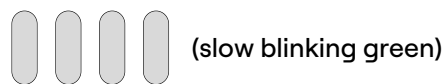
While Sepura is booting, a lights animation will display in blue, green, pink and white.

### Creating Access Point



While Sepura is creating its Wi-Fi hotspot, lights will progressively light up green.

### Access Point is Live



Once the Sepura-Home hotspot is created, lights will slowly blink green.

### Successfully Connected to Home Wi-Fi



After connecting Sepura to your home's Wi-Fi, lights will flash green twice when successful.

---

## Warnings

### Bin Too Full



Lights will flash white when the bin inside the Collection Center is full.

### Stuck



If Sepura gets stuck, lights will flash blue until you safely remove the object obstructing it.

### Flooded



If sink is full of water, lights will flash yellow until Sepura is free to run again.

### Something Went Wrong



If lights are blinking red, factory reset Sepura by clicking the button 4 times, waiting until the lights turn purple, and then clicking the button once more.

---

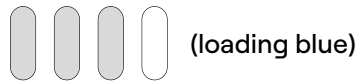
## Software Update

### Long Press (10 seconds)



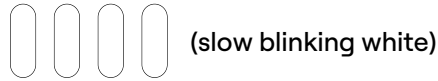
Press and hold button until white lights flash once to start the over-the-air update.

### Connecting to Wi-Fi



Lights will progressively light up blue as Sepura connects to your home Wi-Fi.

### Updating



While Sepura is undergoing an over the air update, lights will breathe white.

### Update Successful



Once Sepura has updated successfully, lights will flash white.

---

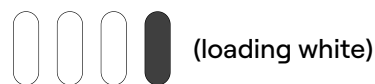
## Bin Calibration

### Extra Long Press (15 seconds)



Press and hold button until white lights flash twice to start calibration.

### Calibrating



While the Collection Center is calibrating, lights will progressively light up white.

### Calibration Successful



Once calibration is successful, the first light will flash white.

# Maintenance

---

## Carbon Filter

---

We recommend that you replace the carbon filter every 3 months, or sooner if odours become noticeable.

## Bags / Liners

---

Sepura can be used with or without liners/bags. If you do use liners, remember to change these before they start dissolving at the bottom.

## Cleaning

---

Your Sepura unit doesn't require any internal cleaning. The Separator component cleans itself every time you run it.

## Power

---

Always keep Sepura powered on. Sepura is a very low powered device and is meant to be kept powered at all times.

# Support

---

## Servicing

A member of our customer support team will be happy to help you with any issues you may encounter. If you did not buy your Sepura unit directly from [sepurahome.com](http://sepurahome.com), please get in touch with the retailer you purchased your unit from. Please include your order number when contacting our team. Or visit [sepurahome.com/guide](http://sepurahome.com/guide).

For technical support:

[support@sepurahome.com](mailto:support@sepurahome.com)

For general inquiries:

[info@sepurahome.com](mailto:info@sepurahome.com)

## Warranty

Every Sepura comes with a one (1) year manufacturer's warranty. This covers any flaw that renders the product unusable caused by an error in our manufacturing process.

It is the user's obligation not to tamper with the product in any way. Doing so will void the warranty. Customer will need original purchase receipt at the time of making a warranty claim.

Exclusions: This warranty DOES NOT cover damage due to accident, fire, flood, and/or other natural disasters, misuse, incorrect line voltage, improper installation, improper or unauthorized repairs, commercial use, or damage that occurs during shipping.

Customer adjustments which are explained in this owners manual are not covered under the terms of this warranty. This warranty will automatically be voided for any unit found with a missing or altered serial number. This warranty is valid only on products purchased and used in Canada and the U.S.A.



Scan the QR code\* or visit [www.samsung.com/spsn](http://www.samsung.com/spsn) to view our helpful How-to Videos and Live Shows

\* Requires reader to be installed on your smartphone

Scan this with your smartphone

### Contact SAMSUNG WORLD WIDE

If you have any questions or comments relating to Samsung products, please contact the SAMSUNG Customer Care Center.

Country	Contact Center	Web Site
U.S.A	1-800-SAMSUNG (726-7864) 1-844-SAM-PAYS (726-7297)	<a href="http://www.samsung.com/us/support">www.samsung.com/us/support</a>
CANADA	1-800-SAMSUNG(726-7864) 1-844-SAM-PAYS (726-7297)	<a href="http://www.samsung.com/ca/support">www.samsung.com/ca/support</a> (English) <a href="http://www.samsung.com/ca_fr/support">www.samsung.com/ca_fr/support</a> (French)



DA68-04014B-00