



Sonessa 28 WireFree RTS Li-ion Sonessa ULTRA 30 WireFree RTS Li-ion

- EN** Instructions
- ES** Instrucciones
- FR** Notice
- DE** Anleitung
- RU** инструкции
- AR** دليل التركيب

ORIGINAL INSTRUCTIONS

These instructions apply to all Sonesse 28 WireFree RTS and Sonesse ULTRA 30 WireFree RTS drives, the different versions of which are available in the current catalogue

CONTENTS

1. Prior information	2	3. Use and maintenance	8
1.1. Sphere of application	2	3.1. Mode selection: roller or tilting mode	8
1.2. Liability	2	3.2. Controlling up, down, my: in roller mode	8
2. installation	3	3.3. Controlling up, down, my: in tilting mode	8
2.1. Assembly	3	3.4. Adjusting the tilting speed	8
2.2. Wiring	3	3.5. Favorite (my) position	9
2.3. Commissioning	4	3.6. Adjusting the speed	9
2.4. Tips and advice on installation	5	3.7. Tips and advice on operation	10
		3.8. Battery replacement	11
		4. Technical data	12

GENERAL INFORMATION

Safety instructions



Danger

Indicates a danger which may result in immediate death or serious injury.



Warning

Indicates a danger which may result in death or serious injury.



Precaution

Indicates a danger which may result in minor or moderate injury.



Attention

Indicates a danger which may result in damage to or destruction of the product.

1. PRIOR INFORMATION

1.1. SPHERE OF APPLICATION

Sonesse 28 and Sonesse 30 drives are designed to drive all types of interior blinds except pantographs.

The installer, a home motorisation or home automation professional, must ensure that once the driven product is installed, it respects the current standards in the country of installation, notably standard EN 13120 relative to interior blinds.

1.2. LIABILITY

Before installing and using the drive, please read these instructions carefully. In addition to the instructions provided in this guide, please also comply with the instructions set out in the enclosed **Safety instructions** document.

The drive must be installed by a home motorisation and automation professional, in accordance with Somfy's instructions and the applicable regulations in the country of installation.

Any operation of the drive outside the sphere of application described above is prohibited. Such operation shall exclude Somfy from all liability and invalidate the Somfy warranty, as will any failure to comply with the instructions given herein and in the enclosed **Safety instructions** document.

After installing the drive, the installer must inform his customers of the operating and maintenance conditions for the drive and must pass the operating and maintenance instructions on to them, as well as the enclosed **Safety instructions** document. Any After-Sales Service operation on the drive requires intervention by a home motorisation and automation professional.

Should any doubt arise during installation of the drive or for additional information, consult a Somfy contact or visit www.somfy.com.

2. INSTALLATION

Attention



- These instructions are **mandatory** for the home motorisation and automation professional installing the drive.
- Never drop, knock or puncture the drive or immerse it in liquid.
- Install an individual control point for each drive.

- ⓘ Make sure that LED, programming button and input connection remain visible and easily accessible after installation.

2.1. ASSEMBLY

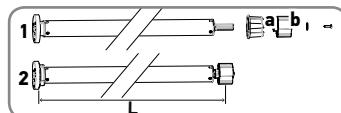
2.1.1. Drive preparation

Attention



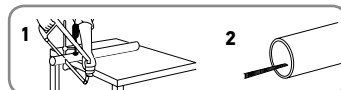
- **Sonesse 28 WireFree RTS:** interior diameter of the tube has to be $\varnothing 26.6$ mm or greater.
- **Sonesse ULTRA 30 WireFree RTS:** interior diameter of the tube has to be $\varnothing 27.7$ mm or greater.

- 1) Fit the crown (a) and drive wheel (b) to the motor.
- 2) Measure the length (L) between the end of the drive wheel and the head end.



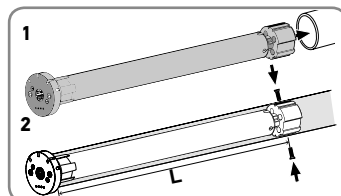
2.1.2. Tube preparation

- 1) Cut the tube to the required length.
- 2) Deburr the tube and remove the debris.



2.1.3. Drive/tube assembly

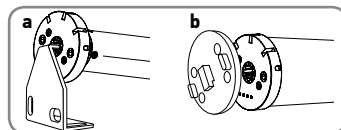
- 1) Slide the drive into the tube. Insert the wheel by aligning the wheel to the tube profile. Insert the drive half way and then slide the crown down the drive and insert it in the tube. Finally, push the motor inside the tube.
- 2) Not required, but if needed, fix the tube to the drive with self-tapping screws or steel pop rivets depending on the dimension (L).



2.1.4. Mounting the tube-drive assembly on the brackets

- a) Standard bracket.
- b) Drive plate for specific bracket.

- ⓘ For optimal radio reception, the motor antenna should be kept straight and should be positioned outside of headrail (if used).



2.2. WIRING

Precaution



- To ensure electrical safety, this Class III motor must be powered by a «SELV» voltage source (Safety Extra Low Voltage).
- The battery level must be below 30% before shipping by air.

Attention



- Use power charger (recommended by Somfy) to charge the drive battery.
- Ensure battery is fully charged prior to installation on site.
- Before setting, it is necessary to charge the battery only if the LED blinks red 5 times when you press any button on the paired control point.

- 1) Connect the charger to the drive.
- 2) When charging is complete, disconnect and store charger for later use.

- ⓘ The drive will go back to sleep if left untouched for 15 minutes.

LED illuminates	Behaviour
Solid Red LED.	Charging.
Green LED blinks twice every 10 seconds.	Charging is near completion.
Solid Green.	Charging is complete.

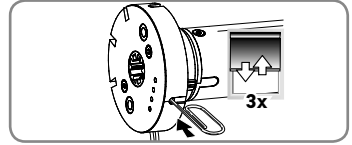
2.3. COMMISSIONING

- ① Orange LED blinks continuously in setting mode.
- ① Green LED blinks once when any order from paired remote is received.

2.3.1. Wake up the drive

For initial unpackaging of drive, wake up the drive by briefly pressing the motor head programming button or plugging on the charger.

The driven product briefly moves Up and Down 3 times and LED lights orange.



2.3.2. Preprogramming the control point

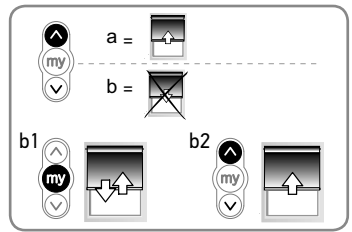
Press the UP and DOWN buttons simultaneously on the control point:

the driven product moves Up and Down and the control point is temporarily programmed to driven product.

2.3.3. Checking the rotation direction

Press the control point UP button:

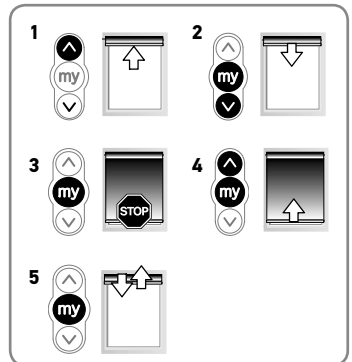
- a) If the driven product raises (a), the rotation direction is correct: proceed to section «Setting the end limits».
- b) If the driven product is lowers (b), the rotation direction is incorrect: move to the next step.
 - b1) Press the control point MY button until the driven product moves Up and Down: the rotation direction has been modified and green LED blinks 5 times.
 - b2) Press the control point UP button to confirm the rotation direction.



2.3.4. Setting the end limits

① The end limits can be set in any order.

- 1) Press and hold the UP button to move the driven product to the desired Up position. If necessary, adjust the Up position using the UP or DOWN buttons.
- 2) **To memorize the UP limit:** Press the MY and DOWN buttons simultaneously and release once the driven product begins to move. The Up limit is now memorized. and green LED blinks 5 times.
- 3) Press the MY button when the driven product reaches the desired Down position. If necessary, adjust the down position using the UP or DOWN buttons.
- 4) **To memorize the Down limit:** Press the MY and UP buttons simultaneously and release when the driven product begins to move. The Down limit is now memorized. The driven product moves up and will stop at its upper limit and green LED blinks 5 times.
- 5) **To confirm and complete limit programming:** Press and hold the MY button until the driven product briefly moves Up and Down. The end limits are now recorded.

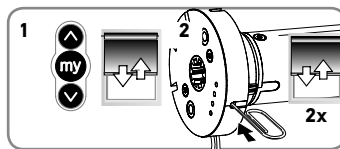


2.3.5. Activate/Deactivate “RTS” radio technology when control point is temporarily preprogrammed (not paired) to the driven product.

① This function is used to deactivate the radio transmission to save the battery life during shipment, or when the product will not be used for an extended amount of time (eg: storage).

1) To deactivate the “RTS” Radio Technology Somfy, press the UP, MY and DOWN buttons simultaneously, until the driven product briefly moves Up and Down once and green LED blinks 5 times.

2) To activate the “RTS” Radio Technology Somfy, briefly press the motor head programming button, the driven product briefly moves Up and Down twice.

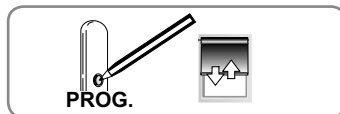


2.3.6. Recording “Pairing” the control point

After recording the end limits:

Briefly press the control point programming button. The driven product will briefly move Up and Down to confirm pairing.

The **control point** is recorded “paired” to driven product and green LED blinks 5 times.



2.4. TIPS AND ADVICE ON INSTALLATION

2.4.1. Questions about the drive?

Observations	Possible causes	Solutions
The driven product does not operate.	Drive battery is low and requires charge. Red LED blinks 5 times when any button of a paired control point is pressed.	Plug in the charger.
	The control point battery is low. LED doesn't light when any button of a paired control point is pressed.	Check the battery and replace it as required.
	The control point is not compatible or not programmed. LED doesn't light when any button of control point is pressed.	Check the compatibility or pair the control point as required referring to 3.7.1. Adding/Deleting Control point chapter.
	An obstacle hinders the movement of the driven product. The Red LED lights fixed on.	Remove the obstacle.
	Drive position is out of the end limits. Red LED blinks 2 times intermittently and continually.	Proceed to section «Setting the end limits»
	Motor is neither set nor paired. Orange LED lights fixed on.	Proceed to section «Commissioning»
	The thermal protection has activated. LED blinks red continuously	Wait for the drive to cool down (LED will switch off)
The driven product stops too soon.	The end limits are incorrectly set	Reset the end limits.
	The driven product has exceeded recommended weight limit.	Replace driven product.
	Battery is low. Red LED blinks 5 times when any button of a paired control point is pressed.	Charge the battery.

Observations	Possible causes	Solutions
Setting is not allowed. The drive moves briefly 3 times in one direction and 3 times in the other direction	Maximum number of control points reached.	Erase control points from memory referring to add a new control point 2.4.5. Erasing control points from memory
	Maximum/minimum value of the setting is reached.	Perform correct setting.
Red LED blinks 3 times and 3 times intermittently.	End limits are too close	Readjust the end limits referring to chapter 2.4.2. End limit readjustment
Red LED blinks slowly for 3 seconds before and after motor running.	Battery is low. Battery capacity is less than or equal to 5%.	Charge the battery.

2.4.2. End limit readjustment



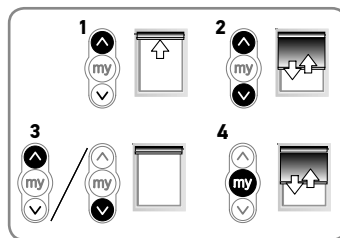
Attention

Control point must be paired to the driven product.

① Orange LED blinks slowly until the new end limit is recorded.

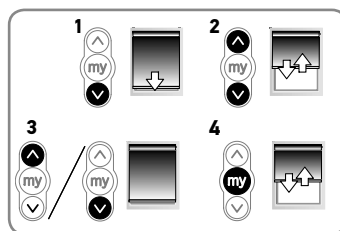
2.4.2.1. Readjusting the upper end limit

- 1) Briefly press the UP button, to move the driven product to the upper end limit.
- 2) Press and hold the UP and DOWN buttons simultaneously until the driven product briefly moves Up and Down.
- 3) Press and hold the UP or DOWN button to move the driven product to the new desired position.
- 4) To confirm the new position press and hold the MY button until the driven product briefly moves Up and Down and green LED blinks 5 times.



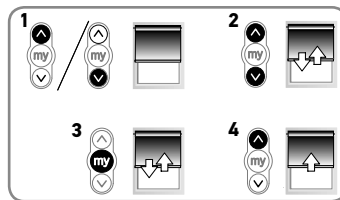
2.4.2.2. Readjusting the lower end limit

- 1) Briefly press the DOWN button to move the driven product to the lower end limit.
- 2) Press and hold the UP and DOWN buttons simultaneously until the driven product briefly moves Up and Down.
- 3) Press and hold the UP or DOWN button to move the driven product to the new desired position.
- 4) To confirm the new position press and hold the MY button until the driven product moves Up and Down and green LED blinks 5 times.



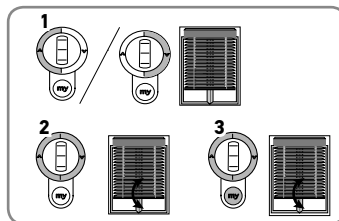
2.4.3. Modifying the motor rotation direction

- 1) Using the UP or DOWN button on the control point, move the driven product away from the end limits.
- 2) Press and hold the UP and DOWN buttons simultaneously until the driven product briefly moves Up and Down and orange LED starts to blink slowly.
- 3) Press the MY button until the driven product briefly moves Up and Down to reverse the rotation direction and green LED blinks 5 times.
- 4) Press the UP button to check the new rotation direction. The motor rotation direction is reversed.



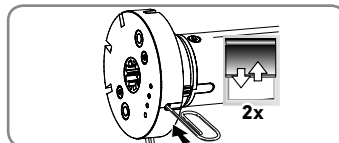
2.4.4. Modifying the wheel rotation direction

- 1) Using the UP or DOWN button on the control point, move the driven product away from the end limits.
- 2) Press and hold the UP and DOWN buttons simultaneously until the driven product briefly moves Up and Down and orange LED starts to blink slowly.
- 3) Press the UP, MY and DOWN buttons simultaneously, until the driven product briefly moves Up and Down, wheel rotation is reversed and green LED blinks 5 times.



2.4.5. Erasing control points from memory

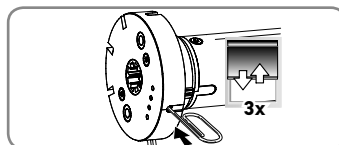
To delete all the programmed control points, press and hold the motor head programming button until the driven product briefly moves Up and Down twice. All programmed control points are deleted and green LED blinks 5 times.



2.4.6. Erasing the memory of the motor (factory default)

To reset the motor, press and hold the motor head programming button until the driven product briefly moves Up and Down 3 times.

All the settings are erased. Green LED blinks 5 times then orange LED is fixed on.

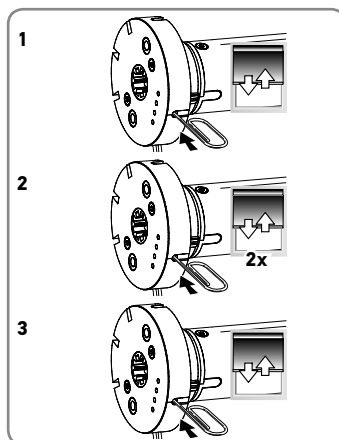


2.4.7. Temporary sleeping mode

△ Attention
The driven product must be programmed.

i The drive will not respond to any control points commands for 15 minutes.

- 1) Press and hold the motor head programming button until the driven product briefly moves Up and Down.
- 2) Briefly press the motor head programming button, the driven product briefly moves Up and Down twice. "Sleeping mode" is activated, green LED blinks 5 times to confirm, then orange LED blinks every second as long as the motor is in the temporary sleeping mode.
- 3) To deactivate the "Sleeping mode", briefly press the motor head programming button. The driven product briefly moves Up and Down, the control point commands are enabled. Green LED blinks 5 times.



3. USE AND MAINTENANCE

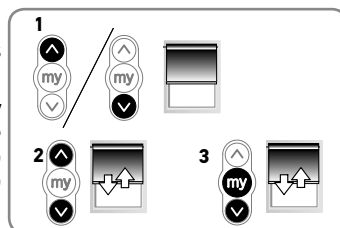
3.1. MODE SELECTION: ROLLER OR TILTING MODE

The drives are designed to work in 2 modes: Tilting mode or Roller mode.

This feature allows the drive to be set according to the type of application.

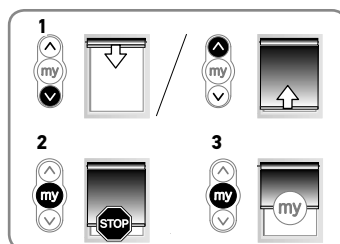
① *The drive is set (by default) to work in Roller mode.*

- 1) Move the driven product away from the end limits.
- 2) Simultaneously press and hold the UP and DOWN buttons until the driven product briefly moves Up and Down.
- 3) Press and hold the MY and DOWN buttons simultaneously until the driven product briefly moves Up and Down to change from Roller mode to Tilting mode. Green LED blinks twice to indicate that the motor is in **Roller mode** or three times to indicate that the motor is in **Tilting mode**.



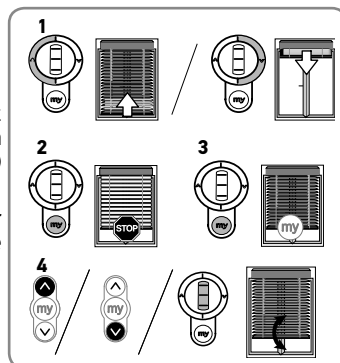
3.2. CONTROLLING UP, DOWN, MY: IN ROLLER MODE

- 1) To move the driven product from a limit to the other limit, briefly press the UP or DOWN button.
- 2) To stop the driven product, briefly press the MY button.
- 3) (If a my position is recorded) To move the driven product to the my position, briefly press the MY button.



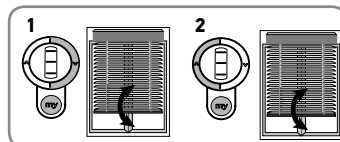
3.3. CONTROLLING UP, DOWN, MY: IN TILTING MODE

- 1) To move the driven product from a limit to the other limit, briefly press (less than 0,5s) the UP or DOWN button.
- 2) To stop the driven product, press the MY button.
- 3) (If a my position is recorded) To move the driven product to the my position, briefly press the MY button. The driven product will automatically travel to the down end limit (first) then to the my position.
- 4) To tilt the slats, press and hold the UP or DOWN button or use the scroll of the remote control, until the slats reach the desired position.



3.4. ADJUSTING THE TILTING SPEED

- 1) To decrease the tilting speed, press and hold the MY and DOWN buttons simultaneously until the driven product briefly moves Up and Down. Repeat as needed. The minimum speed has been reached when the driven product no longer moves Up and Down and green LED blinks 5 times.
- 2) To increase the tilting speed, press and hold the STOP and UP buttons simultaneously until the driven product briefly moves Up and Down. Repeat as needed. The minimum speed has been reached when the driven product no longer moves Up and Down and green LED blinks 5 times.



3.5. FAVORITE (MY) POSITION

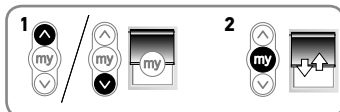
① A *intermediate stop* or “favorite (my) position,” which is commonly used between the fully Up and Down positions.

- 1) To set this function, move the driven product to the desired position using the UP or DOWN button. Briefly press MY button to stop the driven product.
- 2) Press and hold the MY button until the driven product moves Up and Down. Favorite (my) position is set and green LED blinks 5 times.



3.5.1. To modify the favorite (my) position

- 1) Use the UP or Down button to move the driven product to the NEW desired favorite (my) position.
- 2) Press the My button to stop the driven product.
- 3) Press and hold the MY button until the driven product briefly moves Up and Down. The new favorite (my) position is programmed and green LED blinks 5 times.



① *Only one favorite (my) position is permitted.*

3.5.2. To use the favorite (my) position

⚠ Attention

The driven product must be stopped.

Briefly press the MY button: the driven product moves to the favorite (my) position.



3.6. ADJUSTING THE SPEED

① *Orange LED blinks slowly in this mode.*

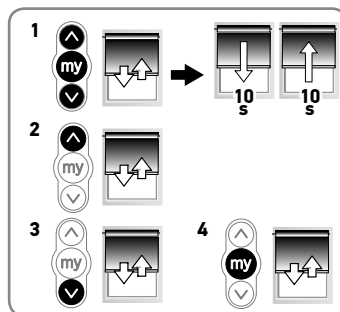
- 1) Move the driven product away from the end limits. Press and hold the UP, MY and DOWN buttons simultaneously, until the driven product briefly moves Up and Down once. The driven product will move UP and Down automatically in 10 second cycles and green LED blinks 5 times to validate entering in speed adjustment mode.
- 2) To increase the speed, press and hold the UP button until the driven product briefly moves Up and Down, and green LED blinks 5 times. Repeat as needed.

① *Maximum speed is reached when the driven product moves briefly 3 times in one direction and 3 times in the other direction. Red LED blinks 3 times and 3 times intermittently.*

- 3) To decrease the speed, press and hold the DOWN button until the driven product briefly moves Up and Down. Repeat as needed.

① *Minimum speed is reached when the driven product moves briefly 3 times in one direction and 3 times in the other direction.*

- 4) To confirm the new speed, press and hold the MY button until the driven product briefly moves Up and Down and green LED blinks 5 times.



3.7. TIPS AND ADVICE ON OPERATION

Observations	Possible causes	Solutions
The driven product does not operate.	The control point battery is low. LED doesn't light when any button of a paired control point is pressed.	Change control point battery as required.
	Drive battery is low and requires charge. Red LED blinks 5 times when any button of a paired control point is pressed.	Plug in the charger.
	RTS is deactivated. LED doesn't light when any button of a paired control point is pressed.	Press motor PROG. button.
	Thermal protection of the drive is on (Red LED blinks slowly).	Wait for the motor to cool down (Red LED will stop blinking when drive is ready to use).
The driven products stops before its end limit	The drive has detected an obstacle (solid Red LED).	Move the driven product in the other direction.

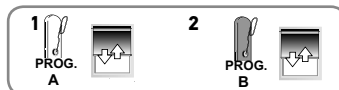
3.7.1. Adding/Deleting Control point



i Orange LED blinks slowly when adding or deleting remote control.

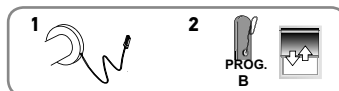
Using a control point (A) that has been previously programmed to the driven product:

- Press and hold the control point programming button (A) until driven product briefly moves Up and Down. Green LED blinks 5 times then orange LED blinks slowly.
- Quickly press the programming button on the back of the new control point (B) to add or delete control point and green LED blinks 5 times.



Using the Programming button on motor head:

- Press and hold the motor head programming button until driven product briefly moves Up and Down. Green LED blinks 5 times then orange LED blinks slowly.
- Quickly press the control point programming button (B) to add or delete control point and green LED blinks 5 times.



3.7.2. Disabling/Activating "RTS" radio technology when control point is definitively is programmed

i Disabling the radio transmission saves battery life during shipment or for a long period of non-use (eg storage). The following steps can only be performed in "User" mode.

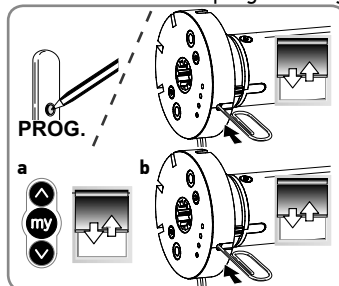
Press and hold the programmed control point programming button or the motor head programming button until the driven product briefly moves Up and Down and green LED blinks 5 times. (Motor is in programming mode)

TO DEACTIVATE RTS RADIO TECHNOLOGY:

- Press the UP, MY and DOWN simultaneously until the driven product briefly moves UP and Down once and green LED blinks 5 times.

TO ACTIVATE RTS RADIO TECHNOLOGY:

- Briefly press the motor head programming button or plug in the charger, the driven product briefly moves UP and Down once and green LED blinks 5 times.



3.8. BATTERY REPLACEMENT

ⓘ Contact Somfy for battery model's recommendation.

Precaution



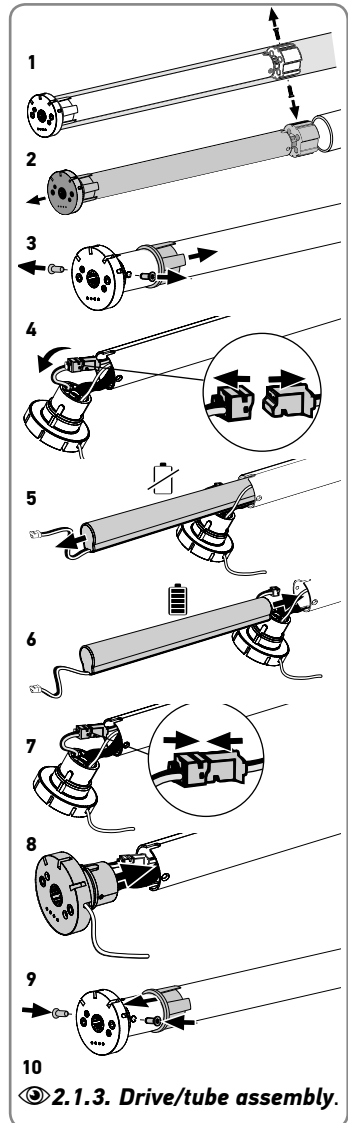
Replacement of the battery by an identical model only, must be carried out by a professional of the motorization and the automation of the habitat.

Attention



- Do not use tools that could damage the drive when replacing the battery.
- Do not cut or damage the antenna cable.

- 1) If the drive is fixed to the tube, disassemble the driven product to access the self-tapping screws or steel pop rivets (motor drive wheel side) and remove them.
 - 2) Grab the motor head and pull out the drive by sliding it out of the driven product tube.
 - 3) If necessary, offset the ring gear on the actuator tube to access the two **T6** torx screws or cruciform screws and unscrew the motor head.
 - 4) Remove carefully the motor head from the drive tube taking care not to damage the wires and disconnect the battery.
 - 5) Grab and remove the used battery by sliding it out of the drive tube taking care not to damage the wires.
 - 6) Insert and slide the new battery into the drive tube, leaving the battery connector accessible from the outside of the tube.
 - 7) Connect the new battery.
 - 8) Insert the motor head using the keying notches on the drive tube taking care not to cut off the wires.
 - 9) Screw the motor head using the two **T6** torx screws or cruciform screws to the drive tube.
 - 10) Restart the installation in chapter **2.1.3. Drive/tube assembly**.
- ⓘ if necessary, readjust the end limits referring to chapter **2.4.2. End limit readjustment**.



4. TECHNICAL DATA

Power supply	12 Vdc SELV
Frequency bands and maximum power used	433,42 MHz
Sonesse 28 WireFree RTS torque	1,1 Nm
Sonesse ULTRA 30 WireFree RTS torque	2 Nm
Speed	10-28 RPM
Electrical insulation	III
Minimum distance between limits	1 turn
Operating temperature	0°C à + 60°C
Protection rating	IP 20 (For indoor use only)
Charging temperature	0 / +45°C
Battery type	Li-ion
Battery charging time	6 hours max.
Running time	4 minutes
Maximum number of associated control	12

 For additional information on the technical data for this drive contact your Somfy representative.



Please separate storage cells and batteries from other types of waste and recycle them via the local collection facility.



We care about our environment. Do not dispose of the appliance with usual household waste. Give it to an approved collection point for recycling.



SOMFY ACTIVITES SA, F-74300 CLUSES as manufacturer hereby declares that the drive covered by these instructions and used as intended according to these instructions is in compliance with the essential requirements of the applicable European Directives and in particular of the Machinery Directive **2006/42/EC**, and the Radio Directive **2014/53/EU**.

The full text of the EU declaration of conformity is available at www.somfy.com/ce.

Antoine Crézé, Approval manager, acting on behalf of Activity director, Cluses, 07/2018.