

Sidekick **for SHADES**



SKS-500

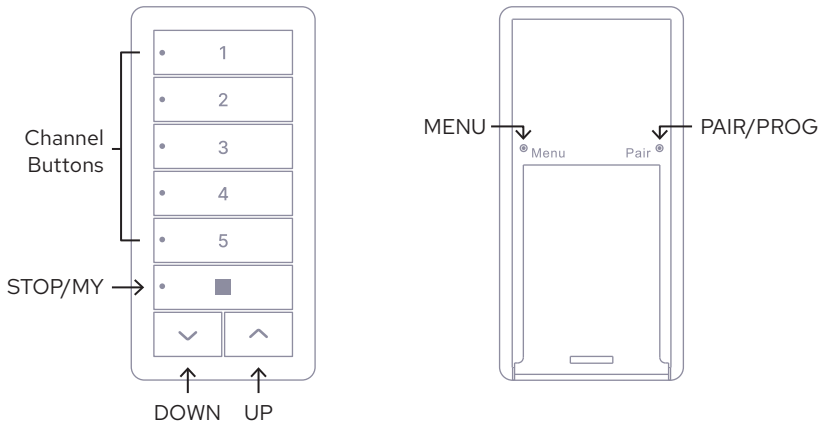
User Manual

Version for Somfy RTS Motors

Features:

- Mix & match shade motor types on single remote
- Multiple channels can be selected and controlled simultaneously
- Control multiple devices in the same channel
- Pairs directly with the shade, but also works seamlessly with Bond Bridge Pro
- Limit-setting fully supported. No factory remote needed.
- Securely flush mounts to a wall with or without a junction box
- Compatible with standard decora cover plates
- Optionally functions as a handheld remote

1. Introduction



Sidekick is a 5-channel wireless keypad that can communicate with multiple motorized shade technologies directly. For ease-of-use, it is designed to work very similarly to the motor manufacturer's remote controls. By default, Sidekick is configured to communicate with Somfy RTS motors, and works similarly to a Somfy DecoFlex or Telis 5 remote control.

1.1. Before you start



If you have blinds with motors configured in "tilt-mode" – where holding down the UP or DOWN buttons causes the shade to move only so long as the button is held – then you will want to change the technology to "Somfy Lights & Blinds". To achieve that, press the following:



You can find more details on configuring technologies, on page 11 and 12.

2. Package Contents and Technical Data

Package Contents

1 x Cover Plate	1 x Wall Clip	2 x Drywall Anchors	1 x Back buttons
1 x Sidekick	2 x Phillips Head Screw	1 x Battery	press tool

Technical Data

Battery type	CR2430 (3V)
Radio Frequency	433.92 MHz
Operating Temperature	-10°C to +50°C
Range	2,500 ft ²

3. Basic Operation

3.1. Channel Selection



You may operate one or more channels at the same time. To deselect a channel, first select another one. It's not possible to have no channel selected.

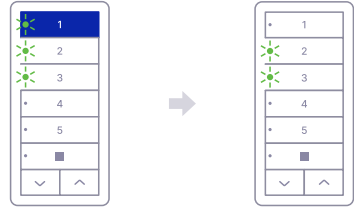
Select Channel



Press desired CHANNEL button

The CHANNEL LED will light up indicating channel selection

Deselect Channel

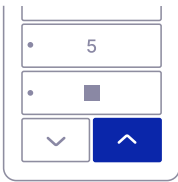


Press selected CHANNEL button

Button LED will turn off

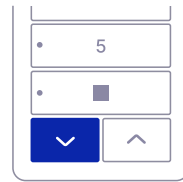
3.2. Raise, Lower, Stop Shade, and Favorite Position

Raise Shade



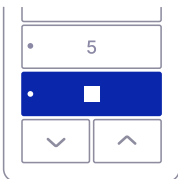
Press UP to raise shade.
It is not necessary to hold the button while the shade is moving

Lower Shade



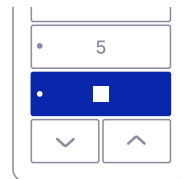
Press DOWN to lower shade.
It is not necessary to hold the button while the shade is moving

Stop Shade



Press STOP while shade is moving

Move Shade to Favorite Position



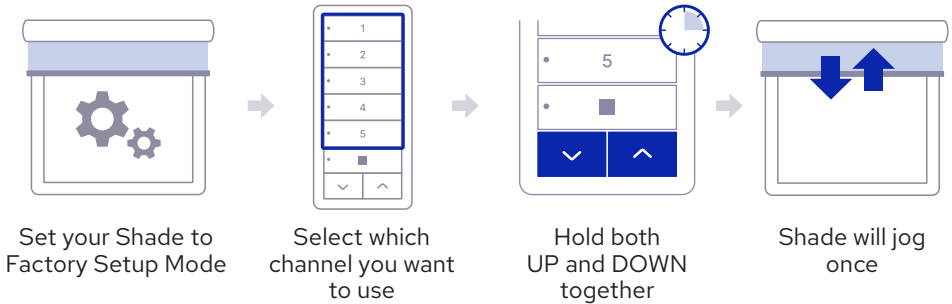
Press STOP while the shade is stationary

4. Setup with New Motors



To pair your Sidekick with a window covering without any previously paired control, you must set the motor to factory mode, which can vary from motor to motor. Please check your motor instructions if needed.

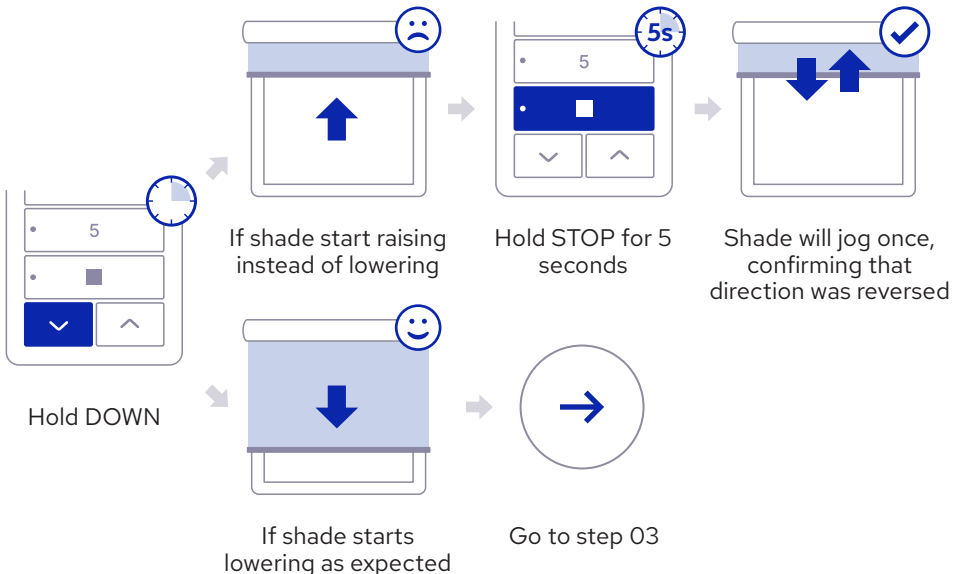
Step 01: Pair Sidekick with new shade motors



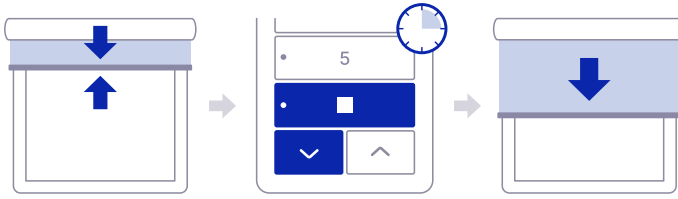
Step 02: Check motor directions



When in Factory Setup Mode, the motor will only move so long as the UP or DOWN buttons are held. Now check the direction of motion and reverse if desired.



Step 03: Set top limit

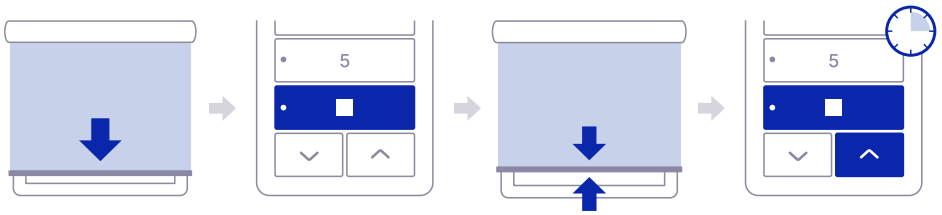


Tap UP or DOWN to fine-tune top position

Hold DOWN and STOP together to set top limit

Shade will start lowering automatically

Step 04: Set bottom limit



When shade reaches desired bottom position

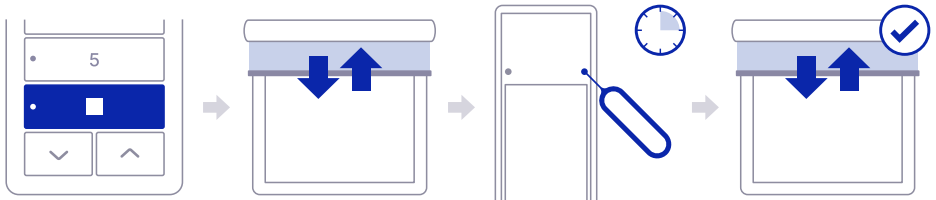
Press STOP to stop shade from lowering

Tap UP or DOWN to fine-tune bottom position

Hold UP and STOP together to set bottom limit.

Motor may not move to confirm.

Step 05: Finish setup



Hold STOP

Shade will jog once to confirm that settings are saved

Hold PAIR

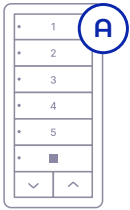
Shade will jog once to confirm that shade exited factory mode

5. Setup as an Additional Keypad (Remote Control)

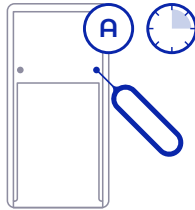


You can pair additional Sidekicks with your shade.
You will need to use the existing keypad (A) to introduce the new keypad (B) as shown below.

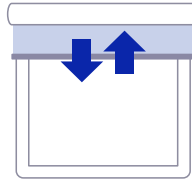
Step 01



On Sidekick that is already paired with shade

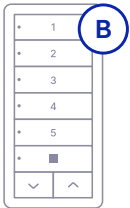


Hold PAIR with tool or paperclip

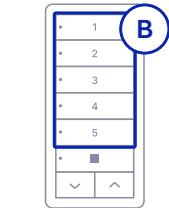


Shade will jog once setting shade to listen mode

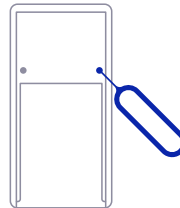
Step 02



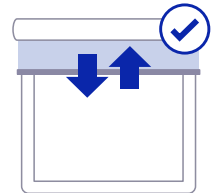
On Sidekick to be added to the shade



Select which channel you want to use

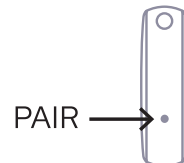


Press PAIR with tool or paperclip



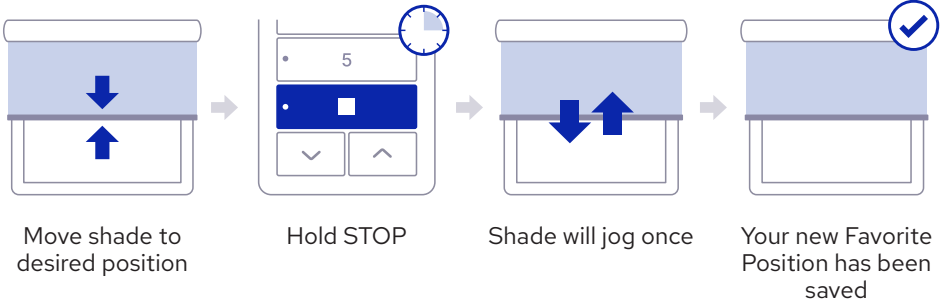
Shade will jog once to confirm that keypad was paired

NOTE: You can also introduce a new Sidekick (B) using a Somfy Telis or Situò remote instead of Sidekick (A). Just follow the instructions above using the button in the back of your Somfy Telis or Situò remote controller as Sidekicks PAIR button.



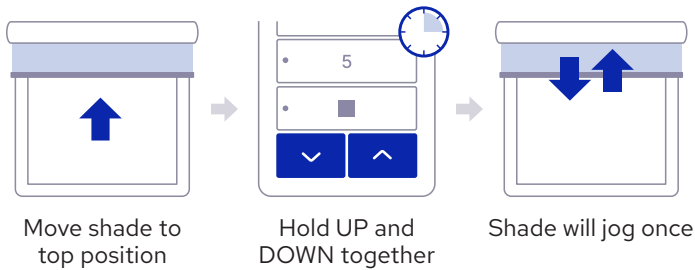
6. Advanced Operation

6.1. Save Favorite Position

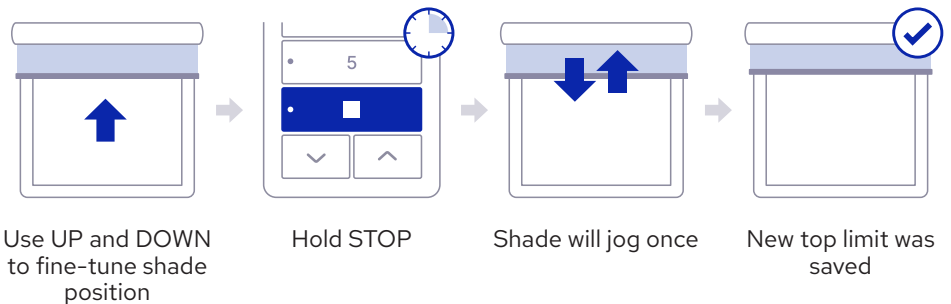


6.2. Adjust Top Limit

Step 01

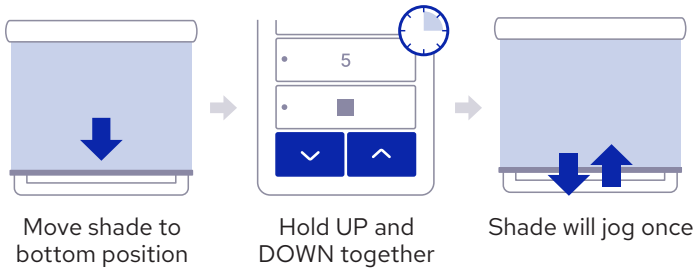


Step 02

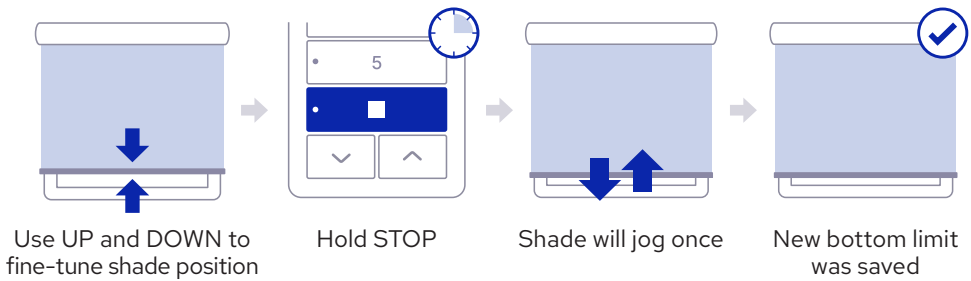


6.3. Adjust Bottom Limit

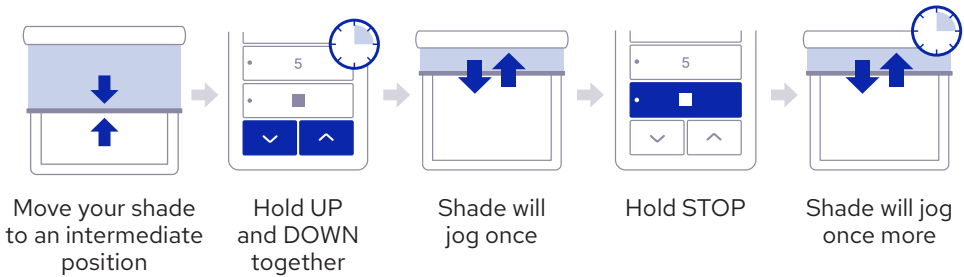
Step 01



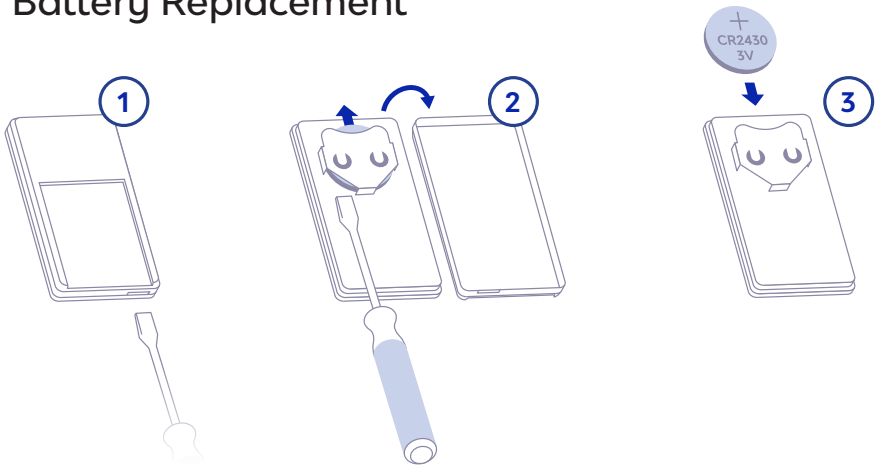
Step 02



6.4. Reverse Motor Direction



7. Battery Replacement



1. Separate the Sidekick covers using a screw driver.
2. Once the back cover has been removed, use a screwdriver to assist in removing the battery. Ensure that the circuit board is not damaged during this process.
3. The replacement battery should have its label facing up. Check that the replacement battery has not been used or stored for more than a year. The battery lifespan of the SKS-500 will be reduced if it is stored for an extended period of time.

8. Linking with a Bond Bridge Pro

When paired with Bond Bridge Pro, Sidekick can update the state of your shades in the Bond Home app. To turn on this feature, link each Sidekick channel with the corresponding shade or shades on the Bond Home app.

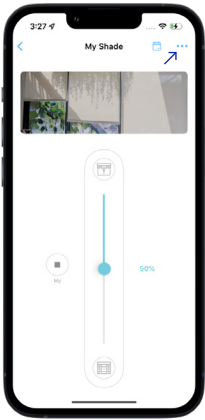


To link your Sidekick with your Bond Home app you need to make sure that:

1. Your Bond Bridge Pro firmware is on version 3.1 or higher.
2. Your Bond Home app is updated to version 2.40.0 or higher.
3. You can control your shade from the Bond Home app.
4. You can control that same shade from the Sidekick*

*If you cannot control the shade with Sidekick due to range or technology limitations, you may use Relay Mode to have Bond Bridge Pro transmit instead. See section 9.3.

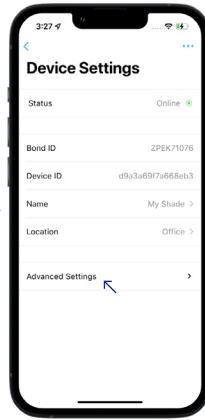
8.1. Linking with Bond Bridge Pro on iOS



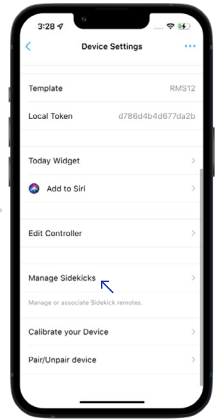
Go to the shade you want to control and tap (...)



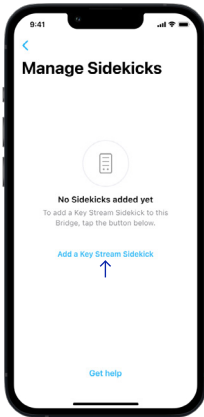
Go to Device Settings



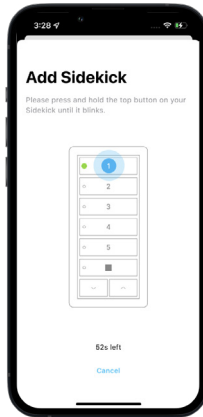
Tap on Advanced Settings



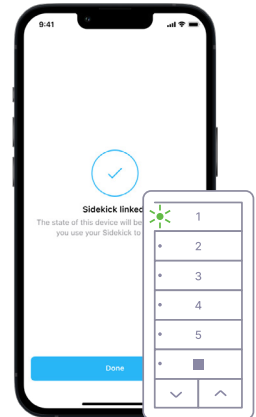
Scroll down and tap on Manage Sidekicks



Tap on Associate with Sidekick

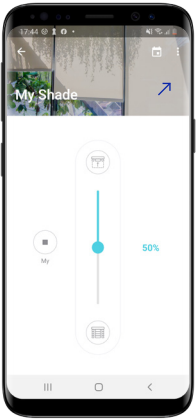


Follow on-screen instructions

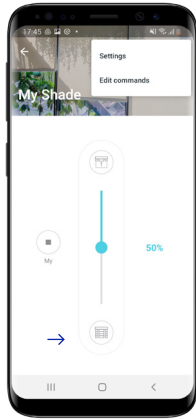


The channel LED will blink and the app will confirm association

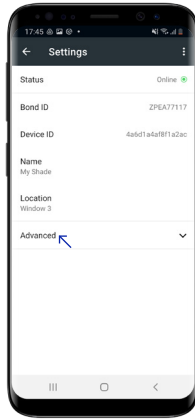
8.2. Linking with Bond Bridge Pro on Android



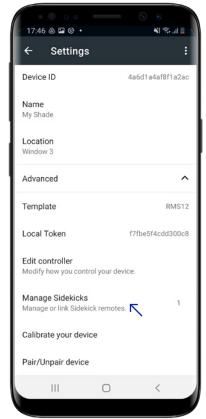
Go to the shade you want to control and tap (...)



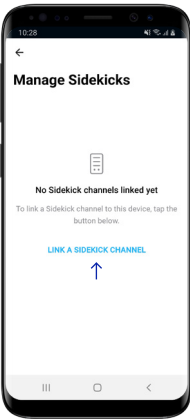
Go to Settings



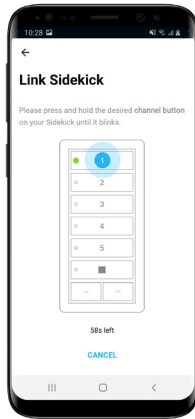
Tap on Advanced Settings



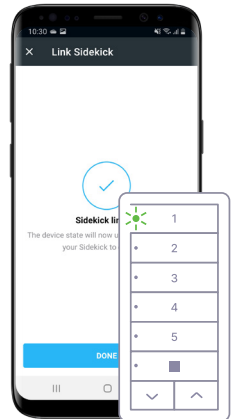
Scroll down and tap on Manage Sidekicks



Tap on Link a Sidekick Channel



Follow on-screen instructions



The channel LED will blink and the app will confirm association

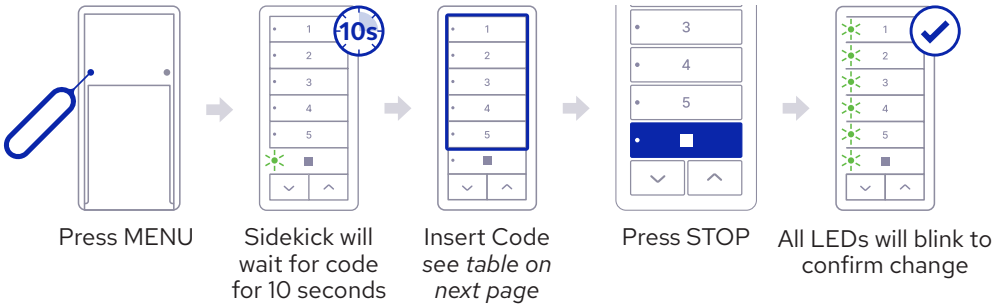
9. Mixing Motor Technologies

Sidekick supports a variety of motor technologies. Follow the instructions below to learn how to expand your Sidekick capabilities.



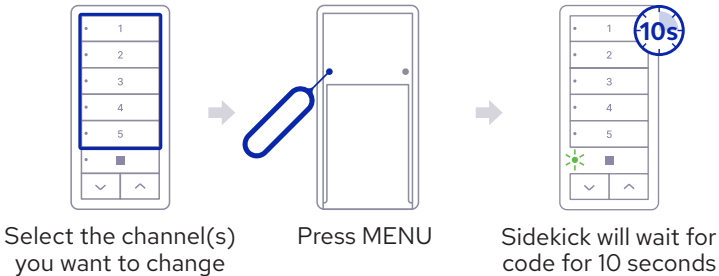
If at any time you wish to cancel the change, you may press the UP button to exit. If you enter an invalid code, or press any other key during the sequence, or there is no activity for 10 seconds, Sidekick will go back to normal operation without any change.

9.1. Changing technology for all channels

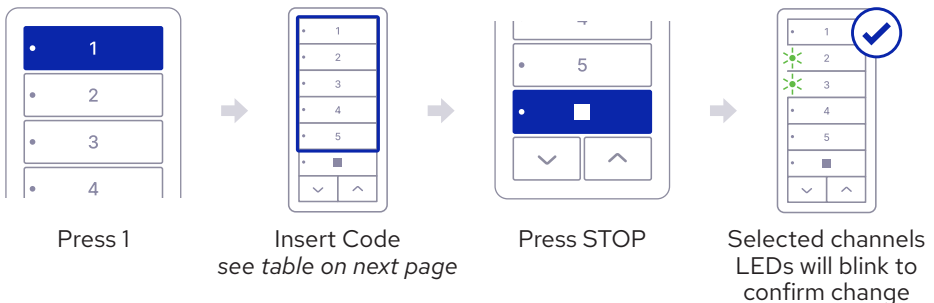


9.2. Changing technology only for specific channels

Step 01: Channel(s) Selection



Step 02: Setting Technology



9.2.1. Motor Technology Codes Table

Technology	Code
Somfy RTS roller mode	• 2
Rollease Automate ARC	• 3
NICE Green interior motors / F-Code	• 4
Dooya Bidirectional including Wynstan and other brands	• 2 → • 3
Motion Blinds Coulisse	• 2 → • 4
Somfy Lights & Blinds and motors in tilt mode often used with blinds	• 3 → • 4

9.3. Relay Mode

In Relay Mode, the specified channels of Sidekick keypad will not transmit any signal directly, instead relying on Bond Bridge Pro to send the signal to the shade. This is especially useful if you want Sidekick to control an All Shades channel where some shades are out of range of the Sidekick, because Bond Bridge Pro is usually in a more advantageous location for radio range.

To enable relay mode on all channels:



To enable relay mode only on currently selected channels:



To exit Relay Mode for any channel, simply set the channel back to the desired direct technology.

*If your shade technology is supported by Sidekick, it is strongly recommended to operate Sidekick in direct mode rather than relay mode.

10. Safety and Legal

Trademark Notice

Bond, Bond Home, Sidekick, and Sidekick for Shades are trademarks of Olibra LLC. Somfy, RTS, DecoFlex, Telis 5, and other trademarks are the property of Somfy Activities SA (henceforth "Somfy"). Decora is a trademark of Leviton Manufacturing Co., Inc. We use these trademarks in this User Manual for the express and limited purpose of elucidating the operation of our SKS-500 product. Our use of these trademarks should not be understood to constitute an endorsement by Somfy or any other trademark rights-holder.

Safety

Improper installation or operation of this product may result in personal injury or property damage. Please follow these instructions carefully including the following important safety notes:

This product contains a lithium coin cell battery. Please beware the following regarding this battery:

These batteries are small and can be a choking hazard for small children.

The chemicals inside the battery can cause fire, explosion, or severe burns if mishandled. Do not dispose of in fire, do not eat, and do not puncture. Dispose only in accordance with local regulations for hazardous materials.

These coin cell batteries are NOT rechargeable. Only replace with another non-rechargeable ("primary") 3V lithium battery of size CR2430. Use of an unauthorized battery is unsafe and will void your warranty.

This product is designed to operate motorized shades, awnings, and pergolas. The movement of these shades or awnings may pose a physical threat to people in their vicinity. For this reason, please beware the following:

Please follow all manufacturer safety instructions regarding the installation, operation, and maintenance of your shade, awning, pergola, or similar appliance.

Do not permit children to operate this product. When installing on a wall, install at a height out of reach of small children.

Do not operate if under the influence of alcohol or other drugs which may impair reaction time or judgment.

Legal

This device complies with part 15 of the FCC Rules. Operation is subject to the following two conditions: (1) this device may not cause harmful interference, and (2) this device must accept any interference received, including interference that may cause undesired operation. Changes or modifications not expressly approved by Olibra could void the user's authority to operate the equipment. For more information on avoiding interference, see the full manual. Hardware and firmware is Copyright © Olibra LLC, 2022. All rights reserved. Firmware includes ChibiOS/HAL Copyright © 2022 Giovanni Di Sirio, used under terms of the Apache License v2.0. Firmware also includes tiny print library Copyright © 2014--2019, Marco Paland of PALANDesign Hannover, Germany, used under terms of the MIT License. For the text of the Apache and MIT licenses, see the full manual.



Bond, Bond Home, Sidekick, and Sidekick for Shades are trademarks of Olibra, LLC.

Designed by Olibra in New Jersey and Santa Catarina. Made in Vietnam.