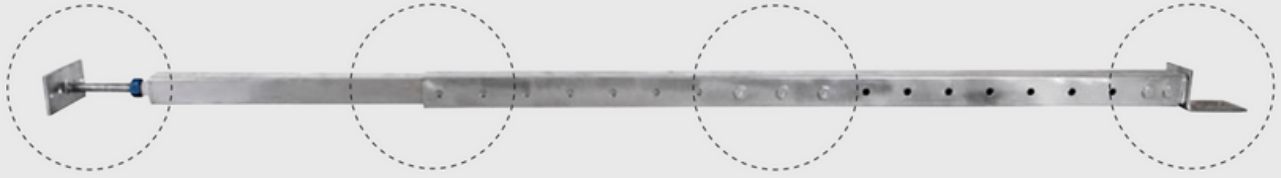




NETWORK STEEL

NETWORKSTEEL.COM.AU



Adjustable thread and locking nut for millimetre adjustments.

Telescopic posts
75x75x4mm into
65x65x4mm

3 high tensile bolts
for 100mm adjustment

Interchangeable heads
using 2 high tensile M16
bolts



SMART TELPOST™

TAKE THE STRESS OUT OF GETTING STEEL POSTS JUST RIGHT

Do you need a post to support an LVL but not sure of the height?

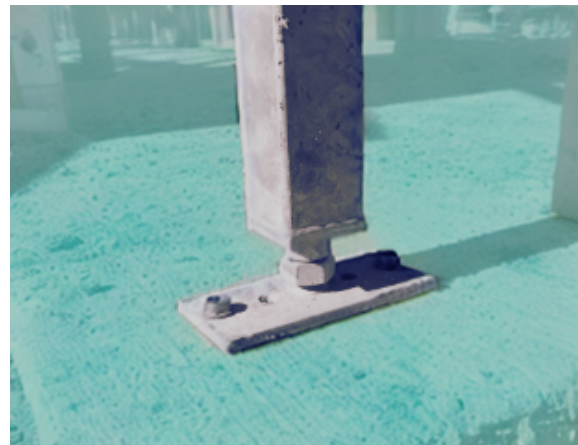
Trying to support a roof load with a post and your concrete levels are not quite right?

SMART TELPOST™ BY NETWORK STEEL IS THE ANSWER!

Smart Telpost™ is designed to take the stress out of getting steel posts at just the right height. Smart Telpost™ can be used to support beams in a huge range of applications.

Perfect for supporting LVL's over alfresco and balcony areas prior to brick piers being laid, avoid the hassle of temporary propping and Work Health and Safety issues.

Smart Telpost™ comes in a range of sizes as shown in Table T1, over leaf. All types are an off the shelf hot dip galvanised product and can be used with any of our proprietary heads.



For pricing and availability or to order, visit our website www.networksteel.com.au

NETWORKSTEEL.COM.AU


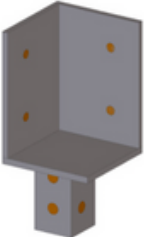
TABLE T1

TELPOST TYPE	ADJUSTMENT RANGE	FINISH	HEADS AVAILABLE
A	1900MM-3300MM	HDG	ALL AP HEADS
B	2700MM-4100MM	HDG	ALL AP HEADS

Smart Telpost™ uses 2 adjustments so you can get the height just right. At the bottom of the Smart Telpost™ is a high tensile M30 threaded rod and locking nut for minor adjustments of 1mm. In the middle of the Smart Telpost™ there are three M16 structural bolts for larger adjustments of 100mm at a time.

The specialised bolts used in the Smart Telpost™ have specifically designed heads so they will fit within the confines of a standard 90mm timber frame. The Smart Telpost™ base plate comes with 15mm holes to suit a huge range of M12 anchors. Below is a list of bolt on heads for the Smart Telpost™, **they all come in a hot dip galvanised finish and are interchangeable as required for your fixing situation.**

For full engineering load tables and detailed drawings of connection plates please contact Network Steel.

TYPE	USES	IMAGE
AT1	AT1 is used for connection to an LVL or timber beam. Suits tek or coach screws.	
AT2	AT2 is used where two LVL's or timber beams join on a mitred corner. Suits tek screws or coach screws.	

 Timber Connection

FOR MORE INFORMATION PLEASE CONTACT OUR OFFICE OR VISIT OUR WEBSITE

Brisbane Branch

3 Enterprise St, Cleveland QLD 4163

Ph: (07) 3821 0424

E-mail: sales@networksteel.com.au



NETWORKSTEEL.COM.AU

ABN: 67 010 200 709

Sunshine Coast Branch

11 Hitech Dr, Kunda Park QLD 4556

Ph: (07) 5353 5269

E-mail: sales@networksteel.com.au