

MAD1-2024-BLK Manual Artwork

Dimensions: 137mm x 95mm

Print 4 color, 2 sided, fold in half

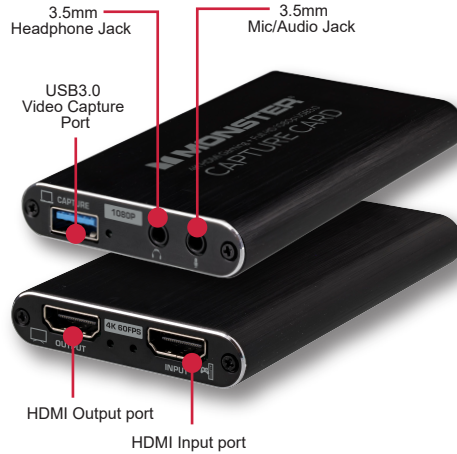
MONSTER™

4K HDMI Gaming + Full HD 1080p USB3.0
CAPTURE CARD



SCAN QR CODE
TO EXTEND YOUR
PRODUCT WARRANTY

Operation Manual
MODEL MAD1-2024-BLK
V3.0 0325



Supported Operating Systems:

Windows 7/8/10, Linux (Kernel version 2.6.38 and above),
OS X (10.8 and above), etc

System requirements as per selected software

Safety

Cautions

Before using this product, please carefully read the following safety instructions to ensure its proper use and keep this manual for future reference:

- To prevent electric shock, do not attempt to open the product.
- Only qualified personnel should perform any repairs or maintenance.
- Always place the product on a stable, flat surface to prevent it from falling.
- Do not expose the product to water, moisture, or high-humidity environments to avoid the risk of damage.
- To prevent damage from direct sunlight or high temperatures, do not expose the product to such environments.
- Do not place the product near heat sources like radiators, heat registers, stoves, or other heat-producing apparatus.
- Do not place any objects on top of the product to avoid damage.
- Use only the attachments and accessories specified by the manufacturer.
- During lightning storms or prolonged periods of disuse, unplug the power supply to prevent damage.

FCC Compliance

This device complies with Part 15 of the FCC. Operation is subject to the following two conditions: (1) this device may not cause harmful interference, and (2) this device must accept any interference received, including interference that may cause undesired operation. Changes or modifications not expressly approved by the party responsible for compliance could void the user's authority to operate the equipment.

This equipment has been tested and found to comply with the limits for a Class B digital device, pursuant to part 15 of the FCC Rules. These limits are designed to provide reasonable protection against harmful interference in a residential installation. This equipment generates uses and can radiate radio frequency energy and, if not installed and used in accordance with the instructions, may cause harmful interference to radio communications. However, there is no guarantee that interference will not occur in a particular installation. If this equipment does cause harmful interference to radio or television reception, which can be determined by turning the equipment off and on, the user is encouraged to try to correct the interference by one or more of the following measures:
—Reorient or relocate the receiving antenna.
—Increase the separation between the equipment and receiver.
—Connect the equipment into an outlet on a circuit different from that to which the receiver is connected.
—Consult the dealer or an experienced radio/TV technician for help.



Scan QR code for 1 year
limited warranty information
366-246-2008
customerservice@monsterilluminescence.com
in the event this product becomes defective,
please do not return this product to your retailer.

The illustrated products and specifications may differ slightly from those supplied. The M Monster logo is a registered trademark of Monster, Inc. or its subsidiaries in the U.S. and other countries and are used under license. All other brand names are trademarks of their respective owners. Neither Jem Accessories, Inc. nor Monster, Inc. is affiliated with the respective owners of their trademarks. Licensed and Manufactured by Jem Accessories, Inc. Edison, NJ 08817.

Introduction

Support maximum input and game play resolution up to 4K at 60FPS. Capture video and output up to Full HD 1080p at 60FPS with high-speed USB3.0.

Features

- 4K HDMI game display
- 1080P 60FPS HD quality capture
- Built-in headphone and mic jacks
- No drivers needed- plug and play
- Works with popular third-party softwares (i.e. OBS)
- USB3.0 Cable included

What's Included

- 1x Capture Card
- 1x USB to USB3.0 Data Cable
- 1x User Manual

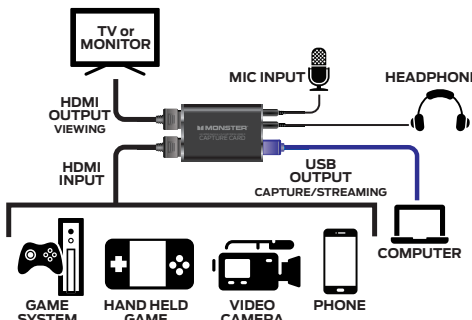
Specifications

- HDTV Input: 3840 x 2160P (60FPS) Max
- HDTV Output: 3840 x 2160P (60FPS) Max
- USB3.0 Output 1920 x 1080P (60FPS) Max
- Supports Console Devices: Playstation 3/4/5, Xbox One, Switch, Wii U, most other consoles.

- Computer Software: Works with popular third-party software

Installation

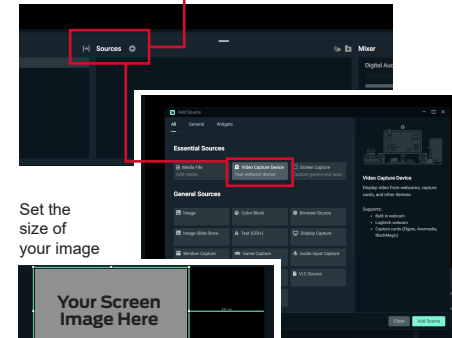
- Carefully remove the Video Capture Card from its packaging.
- Plug the included USB3.0 cable into the USB3.0 port on the capture card.
- Connect the other end of the USB3.0 cable to an available USB3.0 port on your computer. This will power on the capture card.
- Use an HDMI cable to connect your video source (e.g., gaming console, camera, or another HDMI device) to the HDMI input port on the capture card.
- Connect an HDMI cable from the HDMI output port on the capture card to your desired display device.



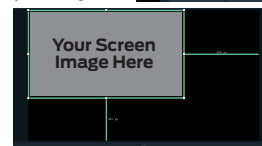
Operation

- Once all connections are made and the capture card is powered via the USB3.0 connection, the device will be ready for use.
- Launch your preferred video capture software on your computer (i.e., OBS Studio, Streamlabs OBS, XSplit).
- In the software, navigate to the settings or source menu and select the capture card (it may appear as "USB Video" or a similar name) as the video source.

Add new sources



Set the size of your image



To use the 3.5MM Mic/Audio input jack:

- Connect your microphone to the Mic port on the capture card.
- Connect any external audio source to the 3.5MM audio input.
- In your capture software, adjust the audio settings to select the appropriate audio inputs from the capture card.

Configure Video Settings:

- Ensure your capture software is set to the desired resolution and frame rate.
- Once all settings are configured, start your recording or live stream from within your capture software. MAX 1080p @ 60FPS