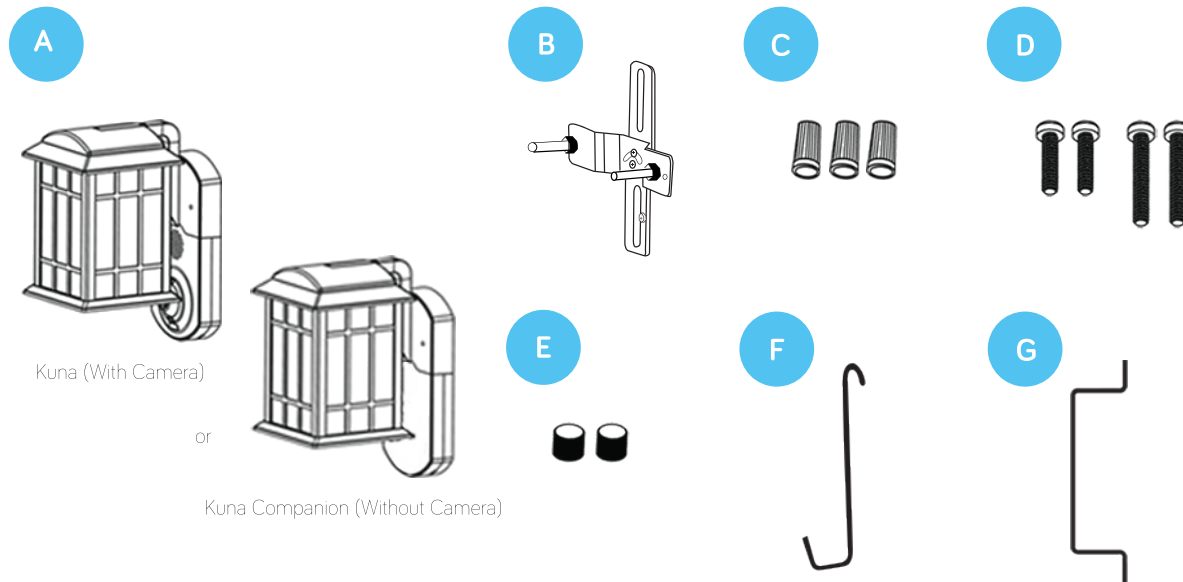


What Is Included

Applicable to All Kuna or Kuna Companion Styles



PART	DESCRIPTION	QUANTITY
A	Kuna or Kuna Companion light	1
B	Mounting bracket with two long screws and two nuts	1
C	Wire nuts	3
D	Screws for junction box (2 short and 2 long)	4
E	Decorative fixture nuts	2
F	Fixture holding hook	1
G	Fixture screws length indicator	1

What Is Not Included

A recommended standard A-15 LED or CFL light bulb, 450 Lumen and 40W equivalent.

Other tools needed: a Phillips head screwdriver, a step ladder and silicone sealant (optional).

SAFETY INFORMATION

- Risk of fire or electric shock. 120V AC light installation requires knowledge of lighting and electrical systems. If not qualified, do not attempt to install. Contact a qualified electrician.
- Disconnect power at fuse or circuit breaker before installing or servicing.
- No user-serviceable parts inside. To avoid electrical shock, do not disassemble product.
- To prevent wiring damage or abrasion, do not expose wiring to edges of sheet metal or other sharp objects.
- Use only on 120V AC, 60 Hz circuits, and with maximum 75W light bulb.
- This device complies with Part 15 of the FCC rules and has been tested and found to comply with the limits for a digital device. These limits are designed to provide reasonable protection against harmful interference in a residential installation. This equipment generates, uses and can radiate radio frequency energy. If not installed correctly or used in accordance with the instructions, it may cause harmful interference to radio communications.