



INSTRUCTION MANUAL FOR VERTICAL CABINET

Tips: Thank you for your purchasing kitchen equipment, please read through this manual first and you should keep it for future use. The pictures are only for your reference. Goods in kind prevail.

Safety Tips

1. DO NOT use the appliance outside
2. The food must be put into containers before being placed into cabinet or on the shelf. Food must not be placed into food cabinet directly.
3. If the supply cord is damaged, it must be replaced by the manufacturer, its service agent or similarly qualified persons in order to avoid a hazard.
4. Keep the appliance and its cord out of reach of children less than 8 years.
5. The appliance is designed to be climate 5, that means the appliance only works in the condition where the temperature not exceeds 40°C and relative humidity not exceeds 40%.
6. Do not store explosive substances such as aerosol cans with a flammable propellant in this appliance.
7. Maximum loading of each shelf is 30 kg.
8. Always switch off and disconnect the power supply to the unit before cleaning.
9. DO NOT use jet/pressure washers to clean the appliance.
10. DO NOT attempt to service the item yourself.
11. When disconnected from the power, The removal of the plug has to be such that an operator can check from any of the points to which he has access that the plug remains removed.
12. **Warning**, Do not use other appliances (heater, ice-cream maker) inside this appliance. Except the appliances recommended by the manufacturer.
13. **Warning**, Keep the good ventilation.
14. **Warning**, Do not use other appliance or other ways to accelerate the defrosting process, except the relevant components recommended by the manufacturer.
15. **Warning**, Do not damage the refrigerating unit.
16. The key can be only used by skilled person to service the appliance, not for user to maintain the appliance. Please keep the key to let it be away from common user.

Notice

The appliance is not to be used by persons (including children) with reduced physical, sensory or mental capabilities, or lack of experience and knowledge, unless they have been given supervision or instruction.

- children being supervised not to play with the appliance.
- Do not store explosive substances such as aerosol cans with a flammable propellant in this appliance.
- If the supply cord is damaged, it must be replaced by the manufacturer or its service agent or a similarly qualified person in order to avoid a hazard.

Installation: Location: Electrical



The cabinet should be placed in a room that is dry and sufficiently ventilated. To operate efficiently it should not be positioned in direct sunlight or near warm appliances. Please note that optimal cabinet performance is obtained at an ambient temperature between +16 °C and +35 °C.

The cabinet can be installed freestanding against a wall.

Important

The cabinet must have sufficient ventilation and free air circulation beneath, above and behind the cabinet. The legs under the cabinet will help ensure sufficient air space.

- Remove the appliance from the packaging. Make sure that all protective plastic film and coatings are thoroughly removed from all surfaces. To prevent injury or damage to the unit, we recommend that the appliance should be unpacked and set up by two people.
- The appliance should be placed on a solid level floor to reduce noise and vibration. Level the appliance by adjusting the screw feet.
- Check that the power supply and voltage used comply with the details on the rating plate. The plug must be accessible after installation
- Correctly connect and disconnect the plug. When inserting ensure the plug is fully engaged. When unplugging do so by holding the body of the plug. Never pull the supply cord directly.
- If the appliance is to be shut down for long periods, switch it off and disconnect the plug from socket outlet. Clean the appliance and leave the door open to prevent odour.
- Important! For your personal safety, this appliance must be properly grounded (earthed). This appliance is equipped with a cord having a grounding wire with a grounding plug. The plug must be inserted into an outlet that is properly grounded and installed. Consult a qualified electrician or service center if you do not completely understand the grounding instructions. If doubt exists as to whether the appliance is properly grounded, have a qualified electrician check the circuit to make sure the outlet is properly grounded.
- If the cable does not reach the nearest socket, either rearrange your store layout or ask a qualified electrician to fix a new socket.
- If power is cut off, wait for at least 3 minutes before restarting the appliance to avoid damaging the compressor.

Note: If the unit has not been stored or moved in an upright position, let it stand upright for approximately 12 hours before operation.

Note: Before using the appliance for the first time, clean the shelves and interior with soapy water.

Cabinet and Controller Operation Instruction

Storing foodstuffs:

To get the best results from your appliance, please follow these instructions:

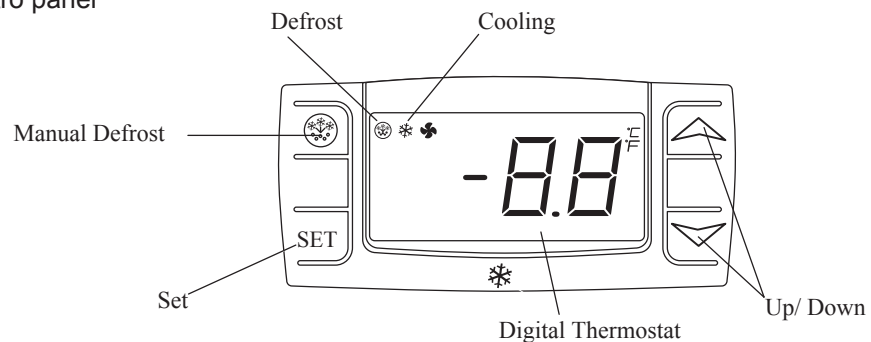
- 1: Only store foodstuffs in the appliance when it has reached the correct operating temperature.
- 2: Always close the door. when hot in use and appliance is switched on. The appliance has fan operating door switches and WILL NOT cool when the door is open.
- 3: Do not place uncovered not food or liquid inside the appliance.
- 4: Wrap or cover food wherepossible.
- 5: Do not obstruct the fans inside the appliance.(Refrigerator)
- 6: Avoid opening the door for prolonged periods of time.
7. The maximum load for a shelf is 30Kg.
- 8: The food must be put into containers before being placed into cabinet or on the shelf. Food must not be placed into food cabinet directly.

Turn on:

- 9: Close the door of the appliance.
- 10.Ensure the power switch is set to [O] and insert plug into socket.
11. Switch on the Power{I}. The current temperature within the appliance is displayed.
- 12: The * on the display will flash for 3-min to indicate a delay between the motor compressor being stopped and then restarted.

Temperature setting and control

Thermoatat display and contro panel



How to see the set point

Push and immediately release the SET key, the set point will be showed;

Push and immediately release te SET key again or wait about 5s to return to normal visualization.

How to change the set point

Push the SET key for more than 2 seconds to chagne the set point value;

The value of the set point will be displayed and the "°C" start blinking ;

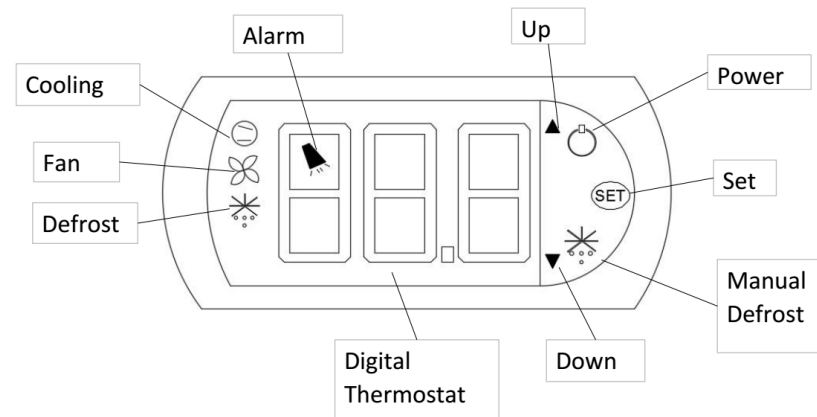
To change the set value push the "^(up) or "v"(down)arrows within 10s.

To memorze the new set point values push the SET key again or wait 10s.

Further instructions:

Refer to manufactures instruction manual or a qualified service agent for modifications to the controller to your requirements.

CAREL



On and off

Switching the instrument ON: press UP for more than 3 s (when pressing the button, the display shows ON).

Switching the instrument OFF: press UP for more than 3 s. The display shows the message “OFF”, alternating with the temperature measured by the set probe.

In off status, the following functions are disabled (if featured by the model):

- compressor control / duty setting / continuous cycle;
- defrost;
- fan control;
- alarms : ‘LO’, ‘HI’, ‘IA’, ‘cht’, ‘CHT’;
- door switch:
- easy, easy compact: A4=7/8;
- easy split: A4=7/8/10/11;
- buzzer (when available).

While the following are enabled:

- temperature display, alternating with the message “OFF”;
- parameter display and setting;
- alarms: “E0”, “E1”, “E2”;
- the internal timer relating to parameter ‘dl’ is updated. If ‘dl’ expires in OFF status, a

Set point setting (desired temperature value)

The easy, easy compact and easy split devices control the desired temperature (set point) inside the cabinet or cold room directly and dynamically.

To view and modify the set point:

- press SET for 1 s, the set value will start flashing;
- increase or decrease the value using UP or DOWN;
- press SET to confirm the new value.

Note: Please refer to the thermostat manual for further adjustment.

Door Gasket Removal And Replacement



Door Hinge Removal And Replacement

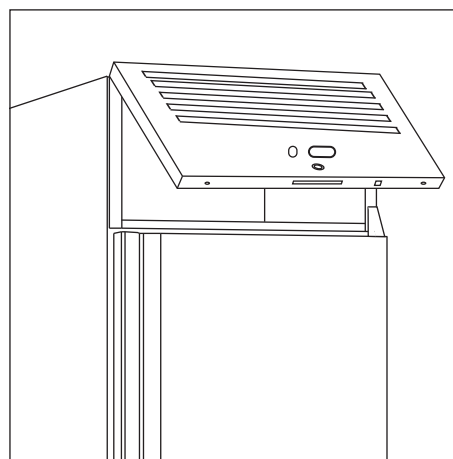
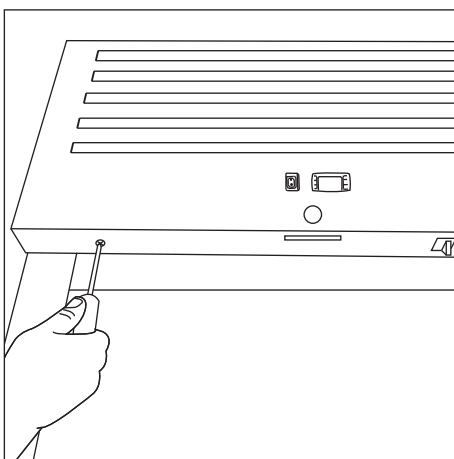
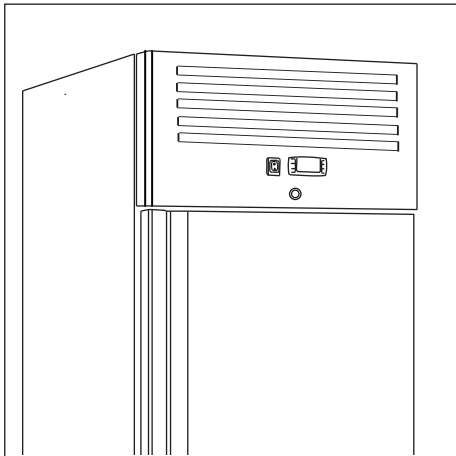
The door can be changed from right hand-hinged to left hand-hinged, or vice versa.
To do so, proceed as follows:

Caution:

Always make sure a properly trained technician if this part needs to be changed can appropriately complete the work and is certified to do so. Make sure the power is always switched off and the plug is removed from the socket prior to any works being carried out.

1. Switch off power and disconnect from the main socket

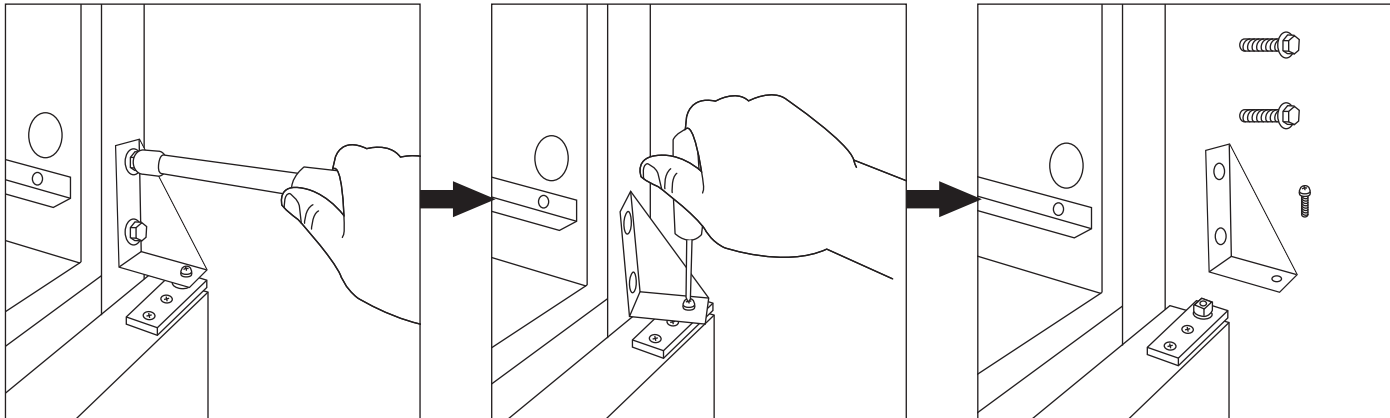
2. Open the panel



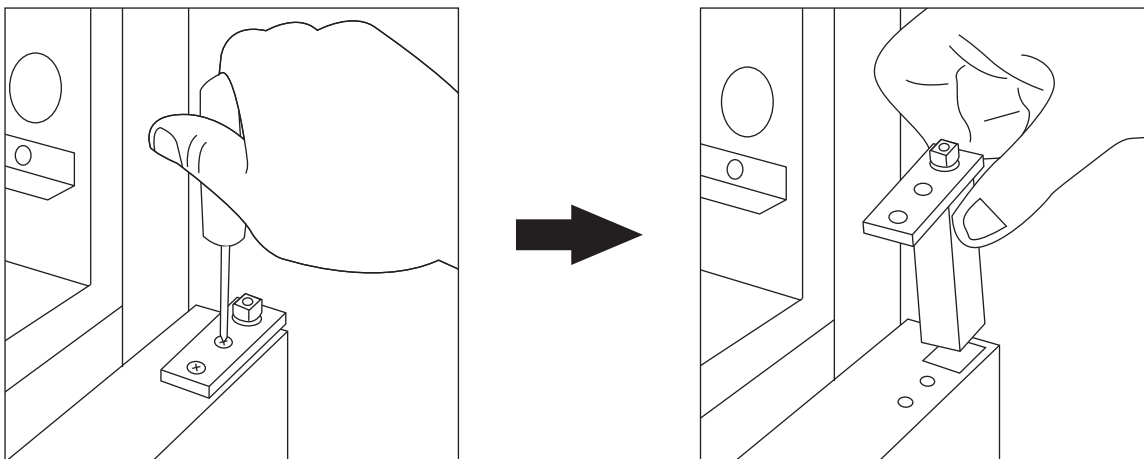
Door Hinge Removal And Replacement

ORIGINAL INSTRUCTION

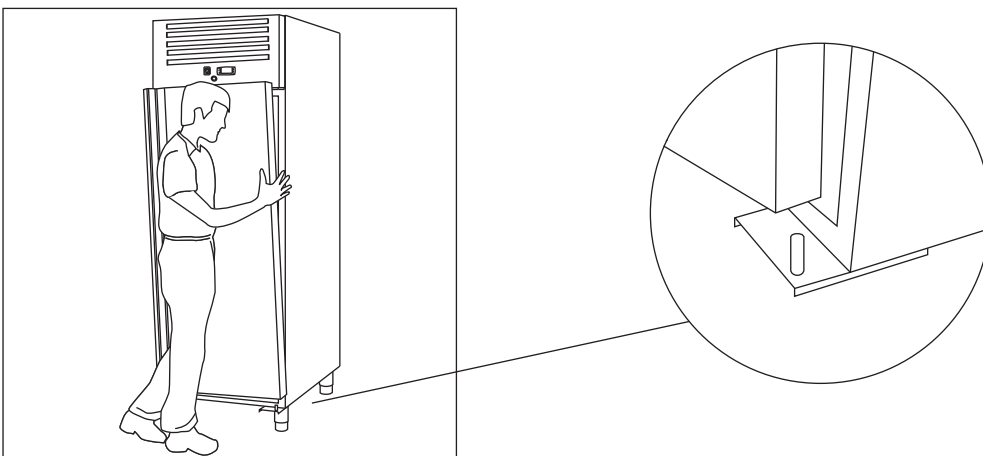
3. Removal of the hinge



4. Removal of the spring

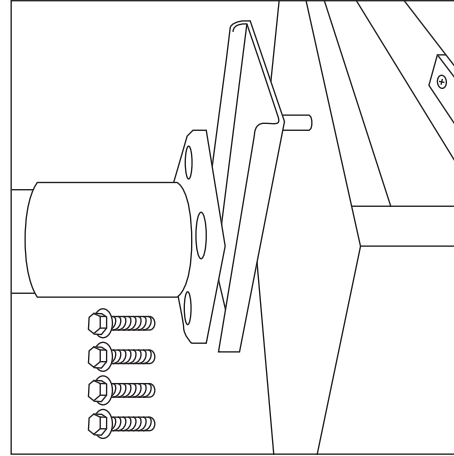
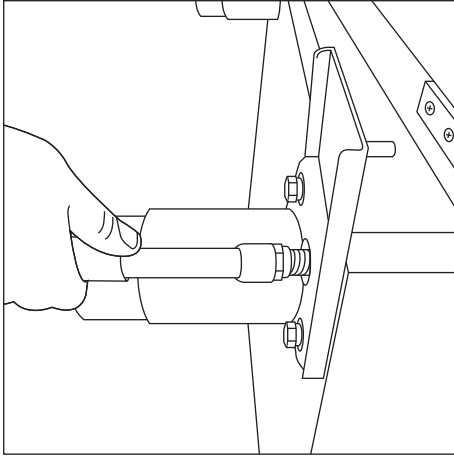


5. Removal of the door

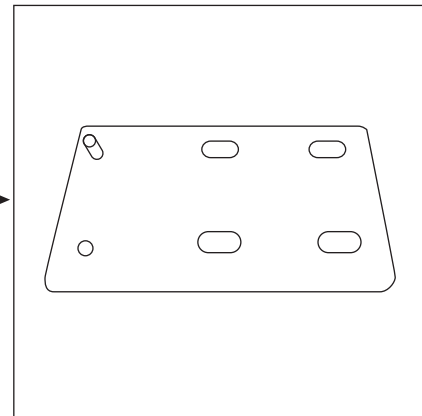
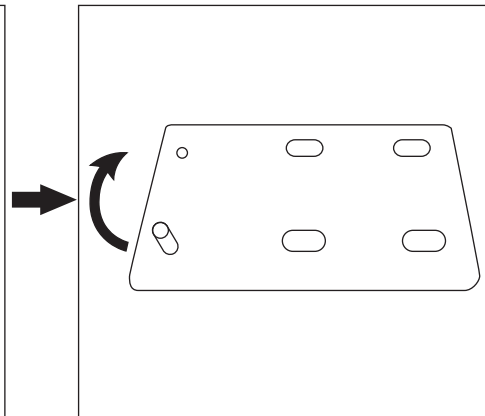
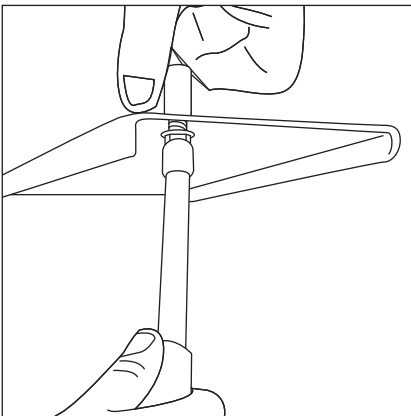


Door Hinge Removal And Replacement

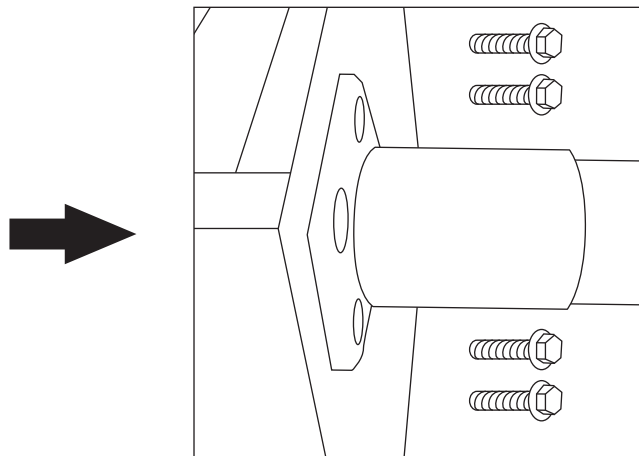
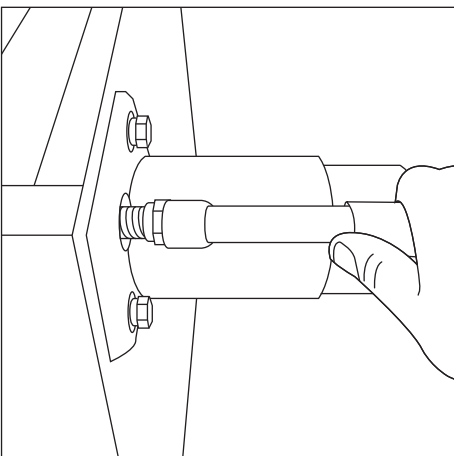
6. Removal of the hinge plate



7. Relocate pin position

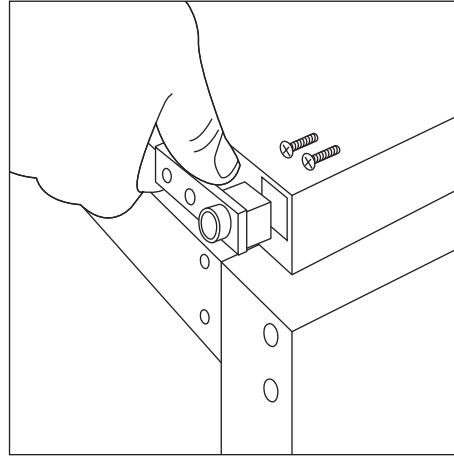
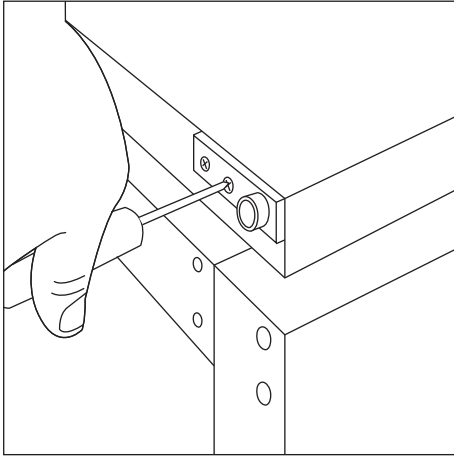


8. Relocate the hinge plate with modified pin position

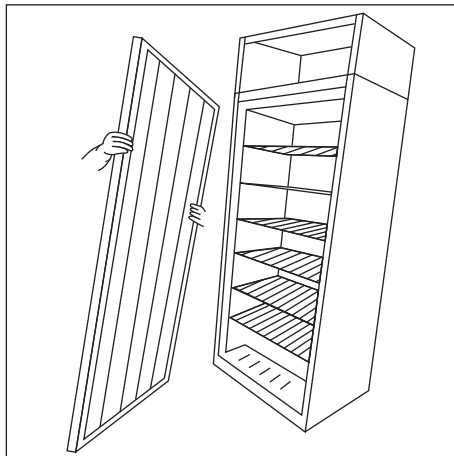


Door Hinge Removal And Replacement

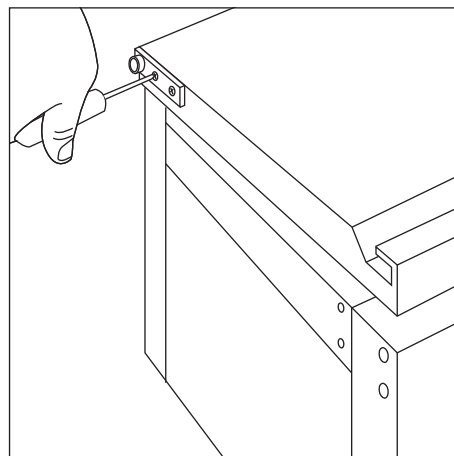
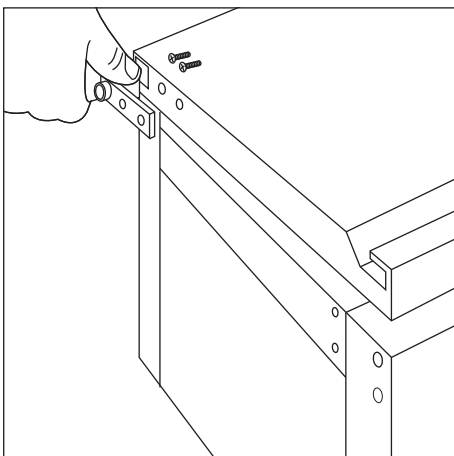
9. Removal of tensioning device



10. Turn the door up side down

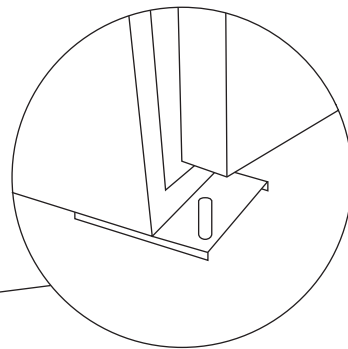
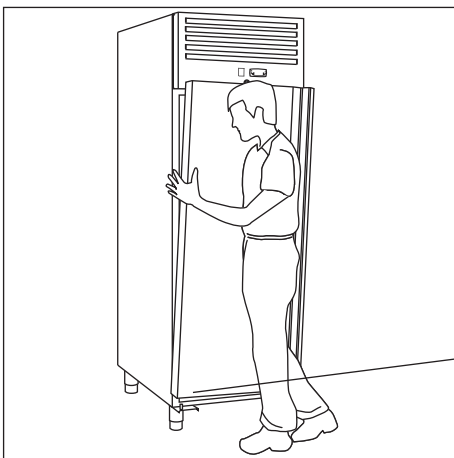
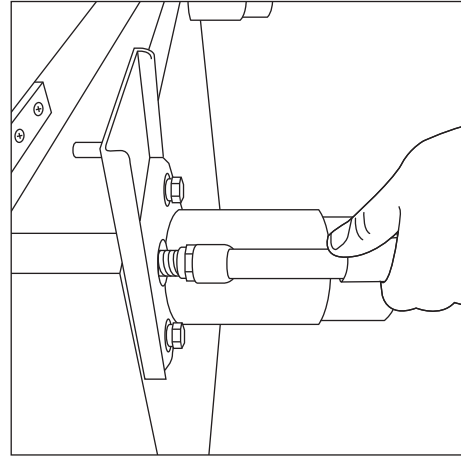
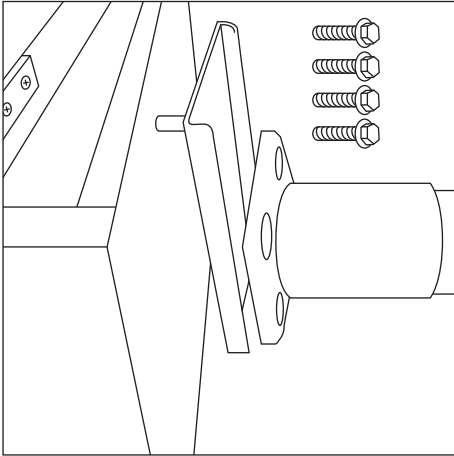


11. Relocate the tensioning device

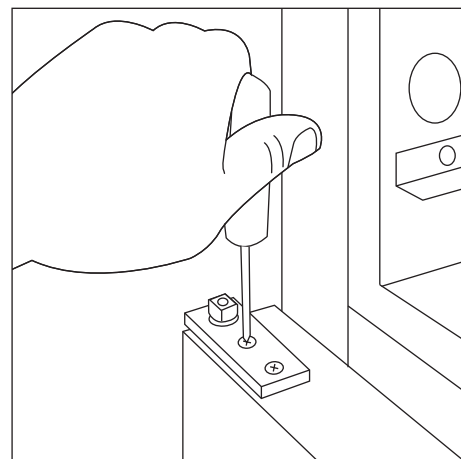
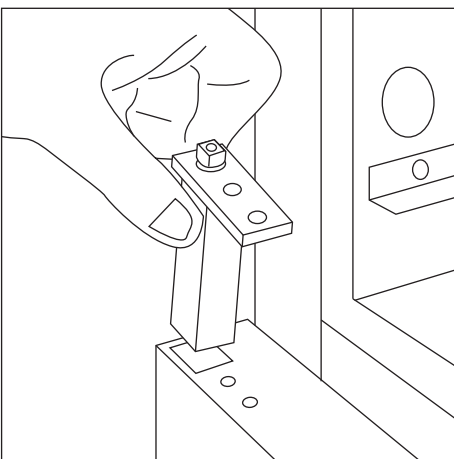


Door Hinge Removal And Replacement

12. Relocate the hinge plate on opposite side

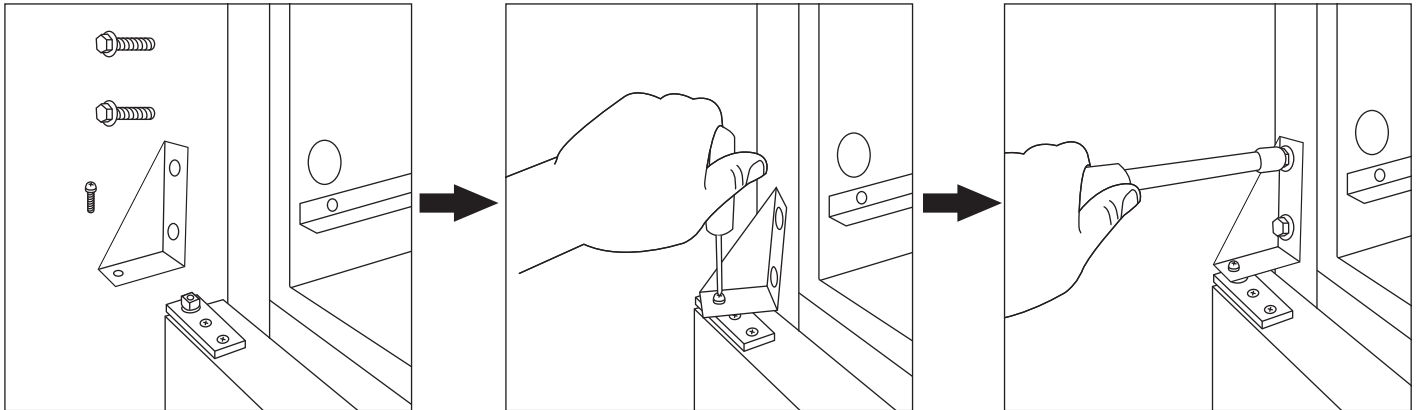


13. Relocate the spring

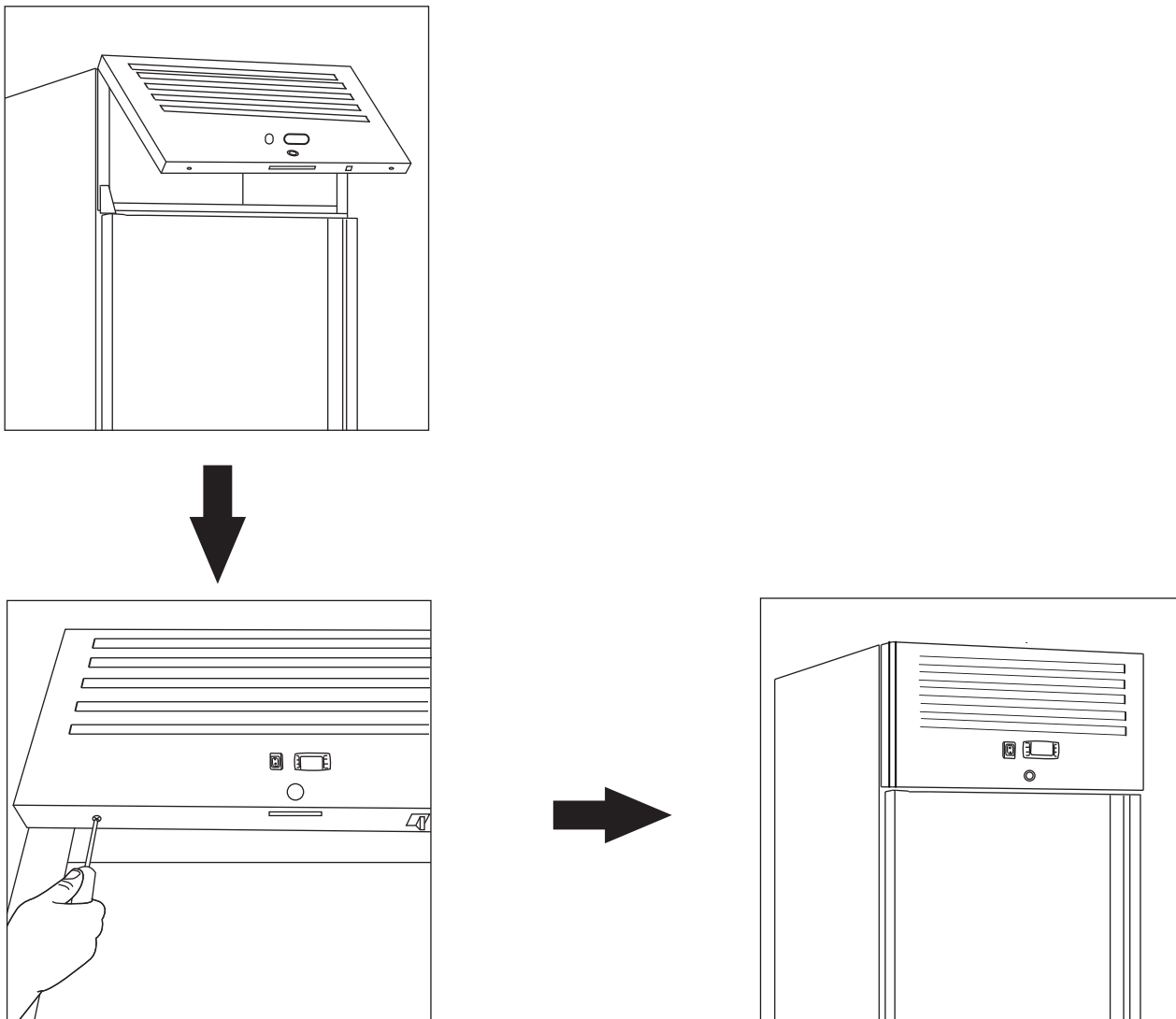


Door Hinge Removal And Replacement

14. Relocate the hinge



15. Close the panel



General Maintenance



Before cleaning, switch off the cabinet and disconnect from the mains.

The cabinet should be kept clean using a mild soap solution. Do not use abrasive cleansers. The plastic parts cannot withstand boiling water(max. temperature +85 °C).

When regular cleaning is performed, be sure to wipe clean the rubber door gasket to ensure any sticky substances are removed that would otherwise damage the gasket.

The condenser fan air outlet above the compressor must be free of leaves, paper etc. to ensure normal operation of the cabinet.

This is best done with a vacuum cleaner and a brush.

Routine maintenance

Switch off and disconnect from the power supply before cleaning.

- Clean the enclosure and interior of the appliance as often as possible.
- Clean the unit with moist cloth. Never allow the switch, control panel, cable or plug to get wet.
- Do not use abrasive cleaning agents. These can leave harmful residues. Use only mild soapy water.
- Clean the door seal with water only.
- Ensure that no cleaning water penetrates into the electrical components.
- Must not be cleaned by a water jet.
- Always wipe dry after cleaning with soft cloth.
- Take care when cleaning the rear of the appliance.
- An agent or qualified technician must carry out repairs if required.

If the appliance is to be left inactive for long periods, unplug the appliance after having turned the switch to OFF position, empty the refrigerating compartment and clean thoroughly. Please leave the door open to avoid the development of odor and mildew.

Special maintenance: Periodic Operations: Qualified Persons Only

- Periodically clean the condenser using suitable tools (vacuum cleaner or soft brushes).
- Check that the electrical connections are not loose.
- Check that the thermostat and the sensor are in proper working order.
- Periodically cleaning the condenser can extend the life of the appliance.
- Recommend that an agent or qualified technician clean the condenser.
- The key to the electrical cabinet should be kept out of the reach of children and users.
- Only use the key to open the lock.

General trouble Shooting

ORIGINAL INSTRUCTION

If your Refrigerator, Freezer appliance develop a fault, please check the following table.

Fault	Probable Cause	Action
The appliance is not working	The unit is not switched on	Check that the unit is plugged in correctly and switched on
	Plug and/or lead are damaged	Call our agent or qualified technician
	Power supply	Check power supply
	Internal wiring fault	Call our agent or qualified technician
The appliance turns on, but the temperature is too high/low	Too much ice on the evaporator	Defrost the appliance
	Condenser blocked with dust	Clean the condenser thoroughly *
	The door is not shut properly	Check that the door is shut and seals are not damaged
	Appliance is located near a heat source, or air flow to the condenser is blocked	Move the refrigerator to a more suitable location
	Ambient temperature is too high	Increase ventilation or move appliance to a cooler position
	Unsuitable foodstuffs are being stored in the appliance	Remove any excessive hot foodstuffs or blockages to the fan
	Appliance is overloaded	Reduce the amount of food stored in the appliance
The appliance is leaking water (Refrigerator)	The appliance is not properly levelled	Adjust the screw feet to level the appliance
	The discharge outlet is blocked	Clear the discharge outlet
	The water container is damaged	Call our agent or qualified technician
The appliance is unusually loud	The appliance has not been installed in a level or stable position	Check installation position and change if necessary

*Done by a properly trained technician.

Technical data

Model	Exterior Dimension	Temperature Range	Net Volume	Voltage	Gas Type	Climate Class
GN650TN	740x828x2050mm	-2~+8°C	480L	230V 50Hz	R290	5
GN650BT	740x828x2050mm	-18~-22°C	480L			
GN1410TN	1480x828x2050mm	-2~+8°C	1045L			
GN1410BT	1480x828x2050mm	-18~-22°C	1045L			
GN600TN	610*760*1950mm	-2~+8°C	345L			
GN600BT	610*760*1950mm	-18~-22°C	345L			
GN1200TN	1220*760*1950mm	-2~+8°C	690L			
GN1200BT	1220*760*1950mm	-18~-22°C	690L			

Disposal

If the cabinet is no longer of use and you wish to dispose of it, remove doors to prevent any small child from being trapped in the cabinet. Then please do in an environmentally correct way.

Contact a qualified service technician:


1. To recover all Freon/refrigerant
2. To remove the compressor or remove the oil from the compressor
3. To remove the flammable insulation blowing gases

Then the distributor/ retailer can contact their local metal recycling center to pick up the remaining cabinet, shelves, etc.

There may be special requirements or conditions. You can obtain information on the disposal of refrigeration appliances from:-
Your supplier

- Government authorities (The local council, Ministry of the Environment, etc.)

By law, disposal of hazardous wastes may be subject to fines and imprisonment under the provisions of the environmental regulations.

	<p>This marking indicates that this product should not be disposed with other household wastes throughout the EU. To prevent possible harm to the environment or human health from uncontrolled waste disposal, recycle it responsibly to promote the sustainable reuse of material resources. To return your used device, Please use the return and collection systems or contact the retailer where the product was purchased. They can take this product for environmental safe recycling.</p>
--	---