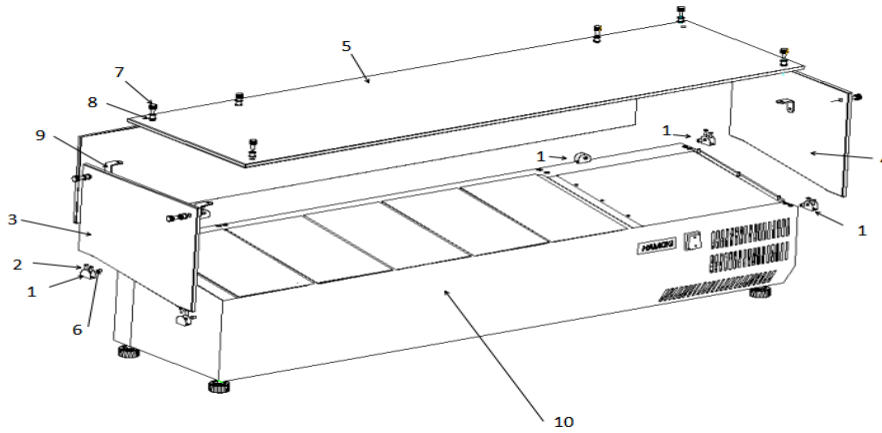
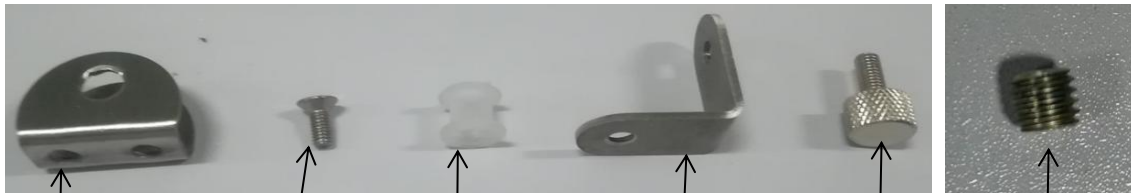


VRX Glass Assemble Instruction

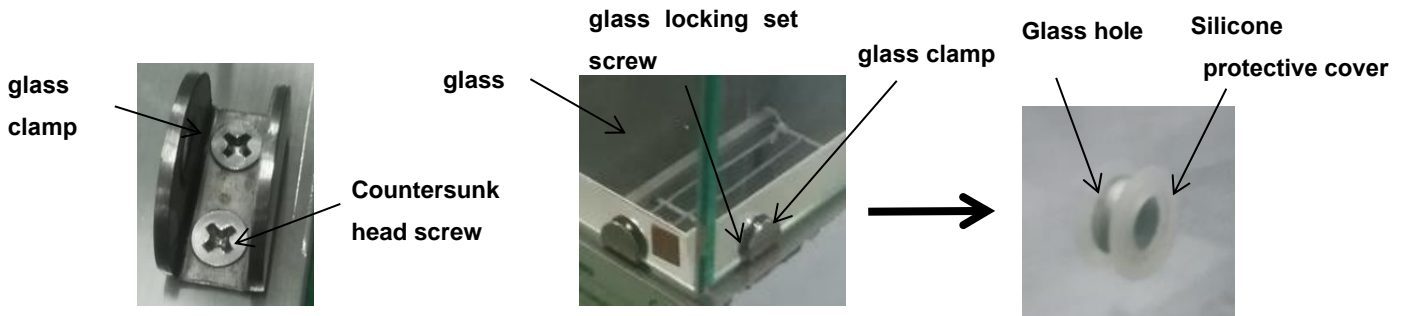


1 、 VRX Glass Accessory List



Glass clamp Countersunk head screw Silicone protective cover foot frame Knurled screw Glass locking set screw

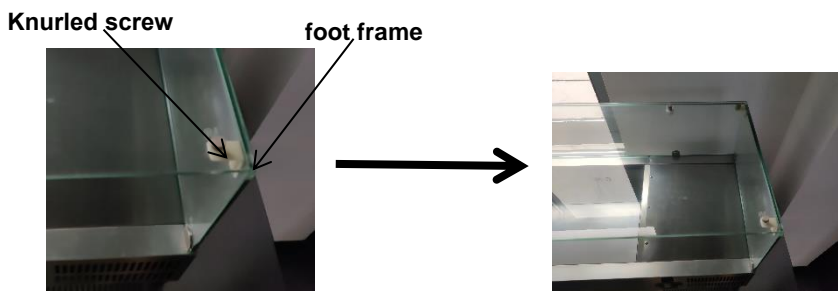
2.Assemble Steps



1.Use countersunk head screws to lock glass clamp on the VRX show case body .

2.Place the two side glass and back glass into the glass clamps separately.

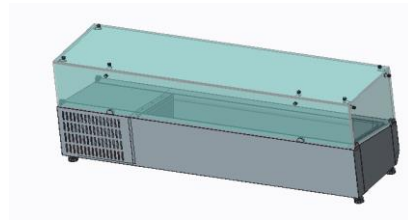
3.Insert the Silicone protective cover into the glass hole.



4.Assemble the foot frame on the inside of glass panel and fix it with knurled screws.

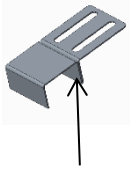
5.Secure the top glass with knurled screws fixed on the installed foot frame.

6. Structural Diagram after Assemble



Instructions for Installing VRX on PZ Marble Series Products

1. Assemble Accessory List:

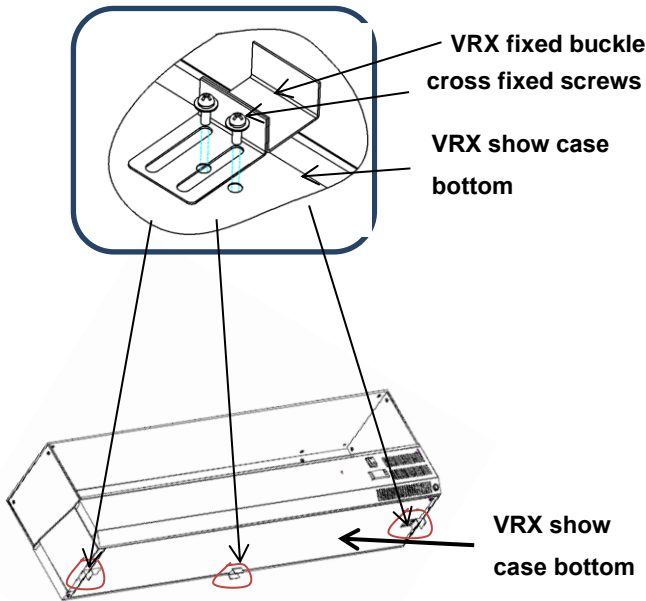


VRX fixed buckle

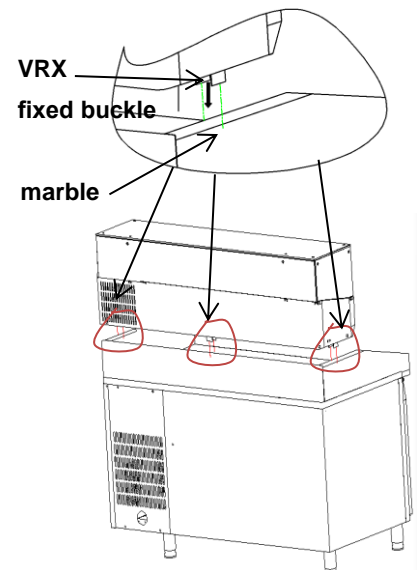


cross fixed screws

2. Assemble Steps



1. Fasten the fixed buckle with a cross fixed screw on the two sides (left & right) and back of the bottom of show case.



2. Clip the fixed buckles on three sides onto the marble.

3. Display after finished Assemble

