

變速機 TRANSMISSION

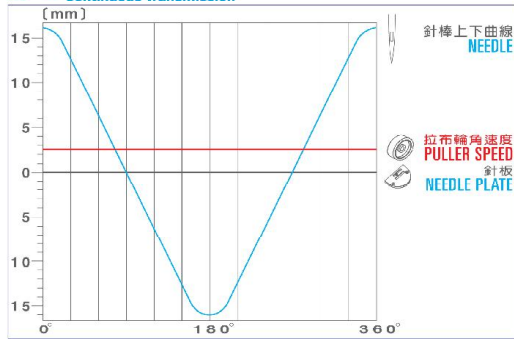


機型 Model	S-1	P-1	P-2
入力軸轉數(最高) Input Shaft RPM (MAX.SPEED)	2000	3000	3000
出力軸轉數(最高) Output Shaft RPM (MAX.SPEED)	430	225	450
扭力(kg/cm) Torque(kg/cm)	12	15	15
重量(kgs) Weight(kgs)	2	2	2

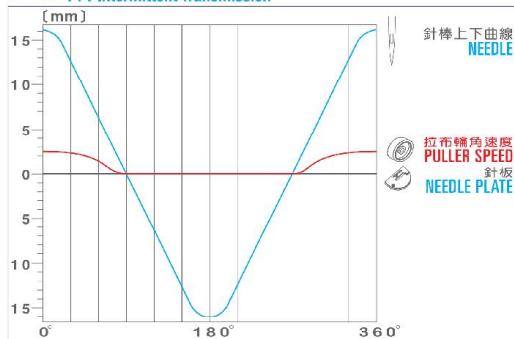
S-1 A W D - $\frac{a}{b/c}$
1 2 3 4 5

- 變速機型
Transmission Type

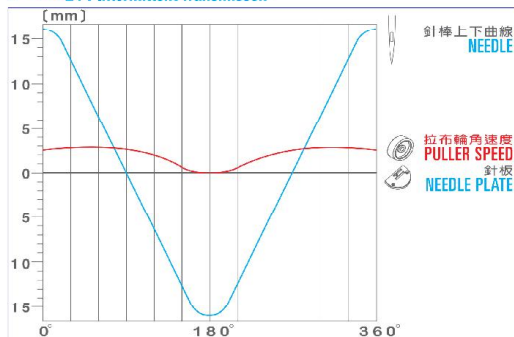
S-1 連續性變速機 Continuous Transmission



P-1 1:1 間歇性變速機 1:1 Intermittent Transmission

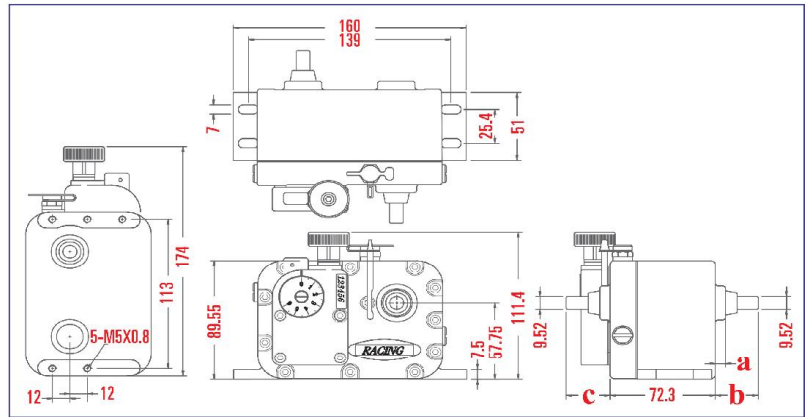


P-2 2:1 間歇性變速機 2:1 Intermittent Transmission

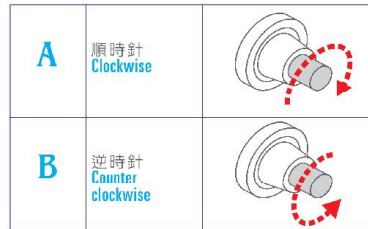


尺寸圖 Specification

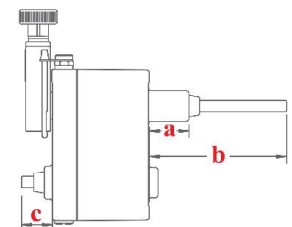
單位: mm
Unit: mm



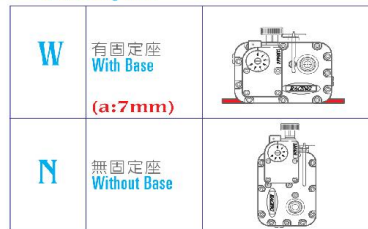
- 出力軸旋轉方向
Rotation of Output Shaft



- 變速機輸入/輸出軸規格
Specification List of Input/Output Shaft



- 固定座
Mounting Base



- ★ 標準品
Standard Type

機型 Type	a	b	c
S-1	★ 7	30	30
	7	88	18
	7	88	30
P-1 P-2	7	102	24
	30	102	54
	★ 30	102	24
	86	182	24
	126	182	24
	86	182	24
	7	52	24

- 輸入/輸出軸位置
Location of Input/Output Shaft

