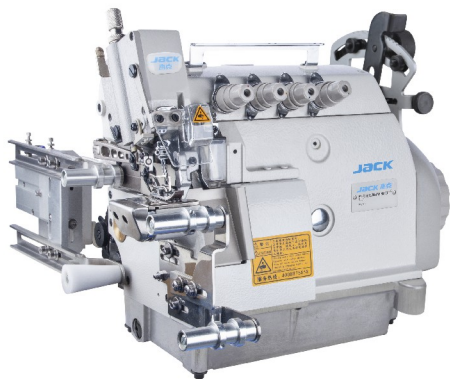


# JK-797TDI-4/KS/FR01 Small cylinder-bed variable top feed super fast overlock machine

High efficiency, wide use, no dislocation



Suitable for clothing items such as

T-shirts, underwears, casual jeans and other middle and high-level clothes



Small cylinder bed, flexible operation



Tod differential device, strong fabric feeding



Power-saving, long life



Stitch length adjust, high-efficiency and convenient

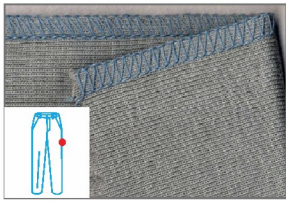
| Model                           | Functions  | Needle    | Needle Thread No. | Needle No. | Needle Distance (mm) | Stitch Width (mm) | Stitch Length (mm) | Differential Ratio | Presser Foot Lifting Height (mm) | Max. Speed (s.p.m) | Volume (mm) | Weight (kg) |
|---------------------------------|--|-----------|-------------------|------------|----------------------|-------------------|--------------------|--------------------|----------------------------------|--------------------|-------------|-------------|
| JK-797TDI-3-504-02/233N         | basic sewing   | Dc×27 11# | 1                 | 3          | -                    | 4                 | 3.8                | 0.8-1.8            | 5                                | 7000               | 525X360X510 | 28/36       |
| JK-797TDI-4-514-M03/333         | basic sewing   | Dc×27 11# | 2                 | 4          | 2                    | 4                 | 3.8                | 0.8-1.8            | 5.5                              | 7000               | 525X360X510 | 28/36       |
| JK-797TDI-4-514-M03/333/FR01    | pneumatic distraction                                | DC×27 11# | 2                 | 4          | 2                    | 4                 | 3.8                | 0.8-1.8            | 5.5                              | 7000               | 525X360X630 | 28/36       |
| JK-797TDI-4-514-M03/333/FR02    | mechanic distraction                                 | DC×27 11# | 2                 | 4          | 2                    | 4                 | 3.8                | 0.8-1.8            | 5.5                              | 7000               | 525X360X630 | 28/40       |
| JK-797TDI-4-514-M03/333/KS/FR01 | pneumatic distraction, suction and trimming          | DC×27 11# | 2                 | 4          | 2                    | 4                 | 3.8                | 0.8-1.8            | 5.5                              | 7000               | 525X360X630 | 28/39       |
| JK-797TDI-4-514-M03/333/KS/FR02 | mechanic distraction, suction and trimming           | DC×27 11# | 2                 | 4          | 2                    | 4                 | 3.8                | 0.8-1.8            | 5.5                              | 7000               | 525X360X630 | 28/43       |
| JK-797TDI-4-514-M03/333/KS/FR06 | Auto alignment, suction and trimming(Solenoid valve) | DC×27 11# | 2                 | 4          | 2                    | 4                 | 3.8                | 0.8-1.8            | 5.5                              | 7000               | 525X360X630 | 28/43       |
| JK-797TDI-4-514-M03/333/KS/FR09 | Full auto feeding, suction and trimming              | DC×27 11# | 2                 | 4          | 2                    | 4                 | 3.8                | 0.8-1.8            | 5.5                              | 7000               | 525X360X630 | 28/43       |

Note: 1. Small cylinder-bed super fast overlock machine JK-797DI series parameter is same as above;

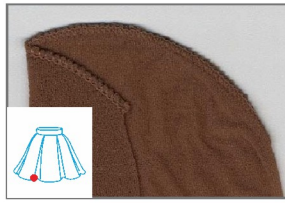
2. KS means side suction trimming, FR01 means elastic auto distraction device, FR02 means elastic mechanic distraction device.

3. FR06 means pneumatic distraction device, auto alignment(Solenoid valve); FR09 means pneumatic distraction device, auto feeding, auto alignment(Solenoid valve).

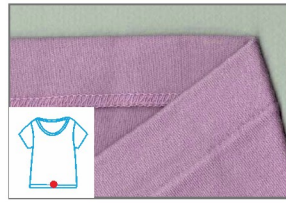
**Overlock Process Device**



Three Threads Basic Stitch  
C6-3-02/233/KS



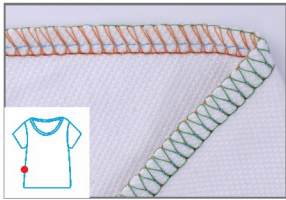
Three Threads Condense Seaming  
C6-3-32R2/223/KS



Three Threads Condense Seaming  
C6-3-12/233/KS



Three Threads Pneumatic Back  
Latch Seaming  
C6-3-82/233/BK



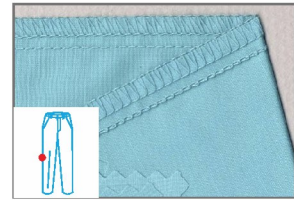
Four Threads Basic Stitch  
C6-4-M03/333/KS



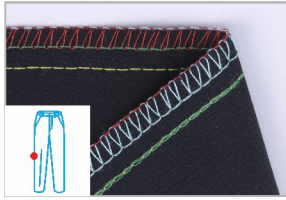
Four Threads Patch Seam  
(shoulder strap presser foot)  
C6-4-M03/333/AT



Four Threads Pneumatic  
Back Latch Seaming  
C6-4-83/323/BK



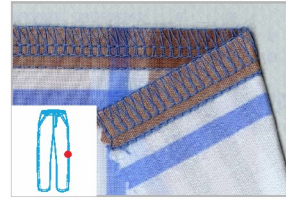
Five Threads Basic Stitch (3X4)  
C6-5-03/333/KH



Five Threads Basic Stitch(5x5)  
C6-03/233/KH



Five Threads Heavy Duty Stitch  
C6-5-M04/435/AT



Six Threads Basic Stitch  
C6-6-03/333/AT



Six Threads Denim Stitch  
C6-6-M04/435/AT



Pocket Binding Seaming  
C6-02X250/AT



Tape Attaching Seaming  
C6-5-53/233/AT



Towel Ending  
C6-MJ-4-53/233/AT



Non-woven Material  
C6-WF-3-02/213/AT



Rear Puller +  
Elastic Attaching Device



Rear Puller

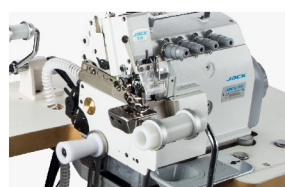


Elastic Attaching  
Device

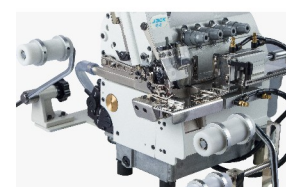
Note:  
KS: Vertical  
suction device  
KH: Horizontal  
device  
AT: Pneumatic  
cutter trimming



FR01 Pneumatic Extension  
Device



FR02 Mechanical Extension  
Device



FR06 Automatic Position  
Adjustment, Pneumatic  
Extension Device



FR09 Fully Automatic Feeding,  
Position Adjustment,  
Pneumatic Extension Device