

# NATIONAL

PLASTICS & RUBBER

North America



## WORKSHOP PRODUCTS

Leaders in the design and manufacture of Polyurethane,  
Rubber and Industrial Plastic products.

# PRODUCTS YOU CAN RELY ON!



## ALL OUR PRODUCTS UNDERGO EXTENSIVE FIELD TESTING.

National Plastics & Rubber's commitment to our customers is to be the Best Industry Provider of polyurethane products to the global marketplace. Therefore, quality and reliability of our products is the concern and responsibility of every person in our organization.

As proof of our commitment to quality and to ensure our customers can depend on NPR products we conduct extensive field testing of all our products.

Our testing procedures push the limits far beyond what the customer will ever require from our products. Knowing our products can stand up to the harshest abuse lets us know you'll be able to rely on them.

# CONTENTS

**1** Load Rated Stacko™ Blocks

**4** Floor Protection Products

**4** Floor Protection Mats

**5** Ripper Rest Pads

**6** Blade Rest Pads

**7** Products for the Workshop

**7** Workshop Chock

**9** Dozer Maintenance Mats

**10** Nevafail™ LED Machine ID

**11** Truck Products

**11** Tray Support Blocks

**13** Wheel Chocks

# LEGEND

 Dimensions

 Weight

 Load Rating

 Suits Tire Diameter

Suited Applications (But not limited to)



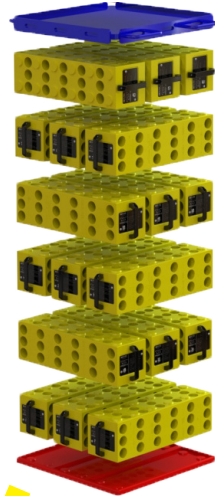


# STACKO™ BLOCKS

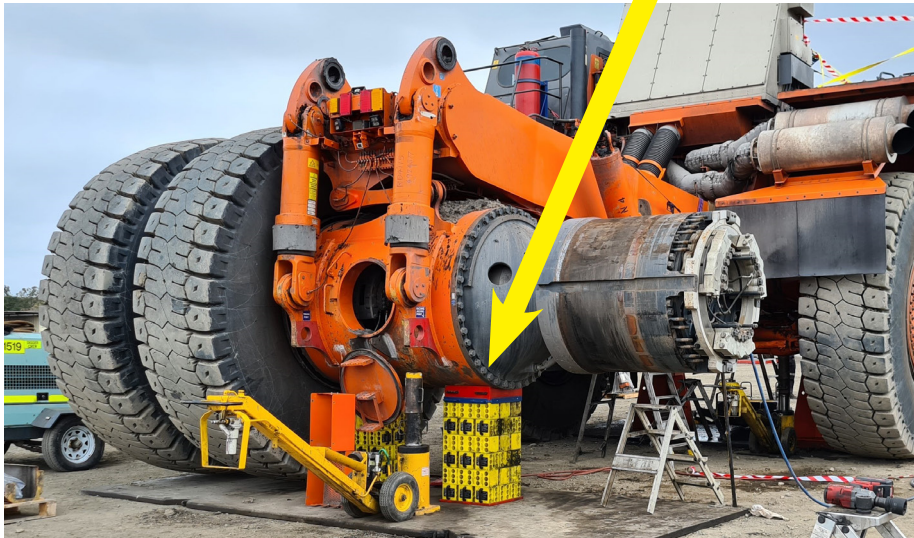
## DEVELOPED FROM THE GROUND UP.

Manufactured from high quality UV stabilised materials, Stacko™ Blocks are the superior alternative to traditional timber blocks. Stacko™ will perform to expectations for the long term.

- » **LOAD RATED WITH 3:1 SAFETY FACTOR**
- » **UP TO 30% LIGHTER THAN TIMBER**
- » **INTERLOCKING DESIGN**
- » **MULTIPLE CONFIGURATIONS FOR VARIOUS APPLICATIONS**



60 Tonne Capacity  
3:1 Safety Factor





## STACKO™ BLOCK

PART NO. NPR05007-00



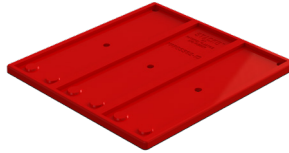
Registered Design Product

	20" L
	6" W
	6" D
	17.50 lbs

## BASE PAD

PART NO. NPR05362-10

with Patented High Traction Base  
Used when forming any stack.



	22" L
	22" W
	0.75" D
	10 lbs

## JACK PLATE

PART NO. NPR05408-20

Used for heavy loads



	13.75" L
	10" W
	1" D
	17.50 lbs

## TOP PAD

PART NO. NPR05409-10

with Patented High Traction Top  
Aust. Pat. No. 2017228727



	21.50" L
	21.50" W
	0.75" D
	14.50 lbs

## SINGLE V-BLOCK

PART NO. NPR05391-10

Used for loads with a curved base



	20.50" L
	6" W
	4" D
	14.50 lbs

## TOP PLATE

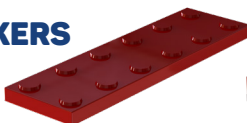
PART NO. NPR05408-00

Used for high loads



	25" L
	20.50" W
	2" D
	92.50 lbs

## PACKERS



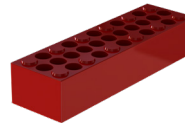
1"

Part No. NPR05377-30



2"

Part No. NPR05377-20



4"

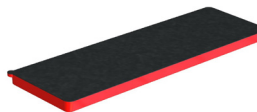
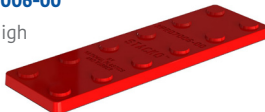
Part No. NPR05377-10

	20" L
	6" W
	23 lbs

## TOP OR BOTTOM PAD - SINGLE

PART NO. NPR07006-00

with Patented High  
Traction Top  
Aust. Pat. No.



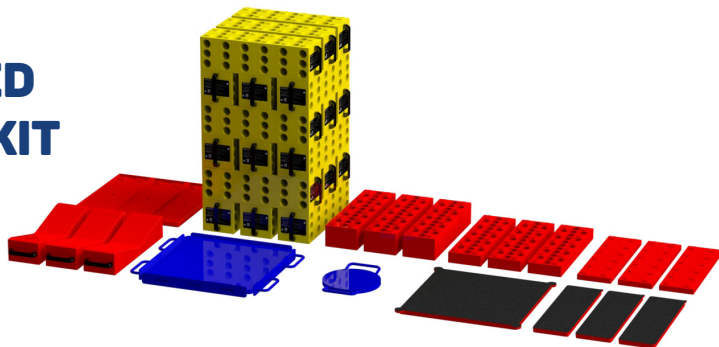
	20" L
	6" W
	1" D
	4.5 lbs

# STACKO™ BLOCKS

## STACKO™ SUGGESTED START UP KIT

ORDER AS - NPR05458-00

The suggested Start-up Kit includes components to suit a variety of different load types.



### STACKO™ BLOCK PART NO. NPR05007-00

**QTY - 18**

### BASE PAD

PART NO. NPR05362-10

with Patented High Traction Base

**QTY - 1**

### JACK PLATE

PART NO. NPR05408-20

**QTY - 1**

### TOP PAD

PART NO. NPR05409-10

with Patented High Traction Top

**QTY - 1**

### SINGLE V-BLOCK

PART NO. NPR05391-10

**QTY - 3**

### TOP PLATE

PART NO. NPR05408-00

**QTY - 1**

### PACKERS

**1"**  
Part No. NPR05377-30

**2"**  
Part No. NPR05377-20

**4"**  
Part No. NPR05377-10

**QTY - 3 OF EACH SIZE**

### TOP OR BOTTOM PAD - SINGLE

PART NO. NPR07006-00

with Patented High Traction Top/Bottom

**QTY - 4**

# FLOOR PROTECTION MATS

Floor Protection Mats provide protection against the potential damage caused by heavy dozers and excavators on workshop floors.

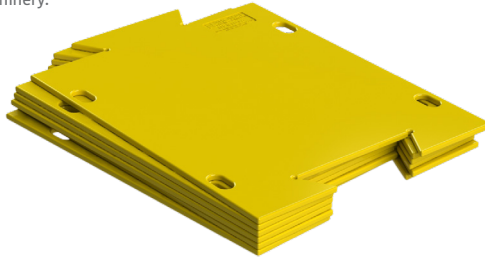
- » **MADE FROM DURABLE POLYURETHANE**
- » **SIMPLE TO USE & EASY TO STORE**



## FLOOR PROTECTION MATS

**PART NO. NPR01016-00**

To be used under tracked machinery.



Load Capacity

 1407 psi

 39" L

31.50" W

1" D

 39.5 lbs

## FLOOR PROTECTION MAT TROLLEY

**PART NO. NPR01492-00**

Holds up to 12 Mats as pictured  
Mats not included



 43.50" L

29" W

32.50" H

 68 lbs



# RIPPER REST PADS

Protection to floor and machinery is made easy and effortless with the use of our lightweight and durable Ripper Rest Pads.

- » **PROTECT FLOOR & MACHINERY AGAINST WEAR & IMPACT**
- » **LIGHTWEIGHT DESIGN**
- » **PATENTED HIGH TRACTION SURFACE**



Aust. Pat. No. 2017228727

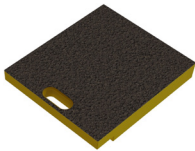
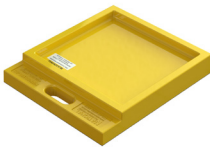
## RIPPER PAD MEDIUM

**PART NO. NPR00370-00**

Recommended to be used with the ripper boot removed.

Load Capacity

 4252 psi



 18" L

16" W

1.50" D

 23 lbs

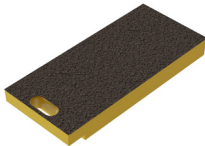
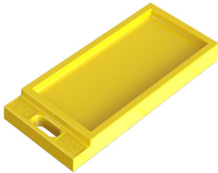
## RIPPER PAD LARGE

**PART NO. NPR01415-00**

Can be used with large size rippers.

Load Capacity

 4252 psi



 26.50" L

12" W

2" D

 28.50 lbs

# BLADE REST PADS

Protection to floor and machinery is made easy and effortless with the use of our lightweight and durable Blade Rest Pads.

- » **PROTECT FLOOR & MACHINERY AGAINST WEAR & IMPACT**
- » **LIGHTWEIGHT DESIGN**
- » **PATENTED HIGH TRACTION SURFACE**



Aust. Pat. No. 2017228727

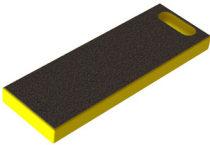
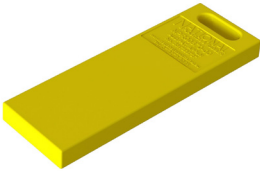
## BLADE REST PAD NARROW

**PART NO. NPR00870-00**

To be used in sets between blade and floor.

Load Capacity

 4252 psi



 23.50" L

8" W

2" D

 15.50 lbs

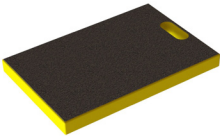
## BLADE REST PAD WIDE

**PART NO. NPR01416-00**

To be used in sets between blade and floor.

Load Capacity

 4252 psi



 23.50" L

15.75" W

2" D

 40 lbs

# WORKSHOP CHOCK

## IMPROVE YOUR WORKSHOP SAFETY

We have expanded our trusted wheel chock range to include our ergonomically designed Workshop Chock. Complementing our range of quality tested mining products, this chock is purpose designed for the workshop environment.

- » **REDUCES RISK OF BACK STRAIN CAUSED BY REPEAT BENDING**
- » **EASIER TO ENSURE CORRECT POSITIONING**
- » **ELIMINATE THE NEED TO GO UNDER THE FOOTPRINT OF THE TRUCK**
- » **IDEAL FOR TYPICAL WORKSHOP ENVIRONMENTS AND LOW GRADIENTS**



- » **IMPROVE SAFETY**
- » **MANEUVERABLE**
- » **LIGHTWEIGHT**
- » **DURABLE**



**PART NO. NPR07999-00**



# WORKSHOP CHOCK

## USER GUIDE

National Plastics & Rubber promotes safe working practices therefore, performing your own risk assessment is essential before using these products.



To move into position, pull the handle down, levering the chock onto its back wheels.

Push chock as close to the truck wheel as possible.



Lift the chock onto its front wheel and bring close to the tire. Bring the back of the chock around into position.

The chock should be straight and flush against the bottom of the tire.

Ensure both sides of the wheel are chocked.



When chocks on both sides of the wheel are in position correctly, the truck is secured.

To remove the chock, lift onto front wheel, remove from flush position & when clear of the tire, transition onto the back wheels and move into selected location.

# DOZER MAINTENANCE MAT

Our Maintenance Mats provide safe, non-slip access to Dozer cabins. They are quickly and easily fitted to machines in the workshop or in the field.

## 1 PIECE MAT

### 28" WIDE

PART NO. NPR00759-00

To Suit Track Widths:

24" to 28"

 77" L

28" W

 35 lbs

### 34" WIDE

PART NO. NPR00765-00

To Suit Track Widths:

28" to 32"

 77" L

34" W

 48.50 lbs

» SAFE, NON-SLIP PLATFORM

» QUICK & EASY TO FIT

» MULTIPLE SIZE OPTIONS AVAILABLE



## 2 PIECE MAT

### 28" WIDE

PART NO. NPR00924-00

To Suit Track Widths:

24" to 28"

 78.75" L

28" W

 35 lbs

### 34" WIDE

PART NO. NPR00925-00

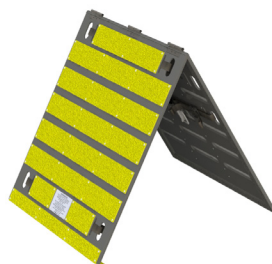
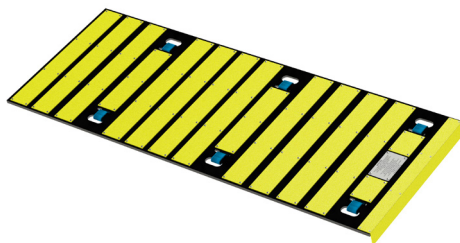
To Suit Track Widths:

28" to 34"

 78.75" L

34" W

 48.50 lbs



# NEVAFAIL™ LED I.D.

With quality componentry and versatile numbers designed to suit your application, Nevafail™ is the only reliable choice for machine identification.

Featuring a fail-safe reflective panel, your machine numbers will remain visible in all conditions - even if the LED light fails.

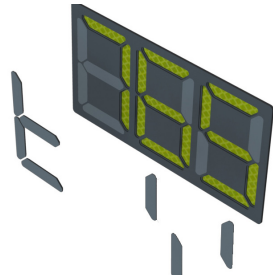
Patent Application No. 2019903240



- » **HIGHLY VISIBLE LED LIGHT**
- » **FAIL SAFE REFLECTIVE PANEL**



- » **LIGHTWEIGHT**
- » **IMPACT RESISTANT**
- » **24 VOLT**
- » **INTERCHANGEABLE DIGITS**





# TRAY SUPPORT BLOCKS

## TAKE THE GUESS WORK OUT OF SUPPORTING TRAYS

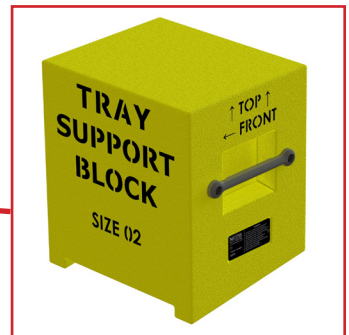
- » IMPROVE YOUR WORKPLACE SAFETY
- » INCREASE YOUR WORKERS CONFIDENCE
- » REDUCE SERVICE TIME - SAVE \$\$\$

### IDEAL FOR:

- » PROVIDING SAFE ACCESS UNDER TRAY
- » PROVIDING FLAT TRAY WORK SURFACE
- » ALLOWING MULTIPLE MAINTENANCE TASKS SIMULTANEOUSLY
- » HOISTING CYLINDER CHANGE OUTS

### OUR SUPPORT BLOCK IS:

- » LOAD RATED
- » BUILT FOR PURPOSE
- » LIGHTWEIGHT
- » SUITABLE FOR MOST TRUCKS



# TRAY SUPPORT BLOCKS

## TRAY SUPPORT BLOCKS - TO SUIT MINE TRUCKS

Make	Series	Tray Support Block	Weight	Product Number
Caterpillar	793	Size 1	18.5kg	<b>NPR06253-00</b>
Caterpillar	789	Size 1	18.5kg	<b>NPR06253-00</b>
Caterpillar	785	Size 1	18.5kg	<b>NPR06253-00</b>
Caterpillar	777	Size 1	18.5kg	<b>NPR06253-00</b>
Caterpillar	730E	Size 1	18.5kg	<b>NPR06253-00</b>
Caterpillar	793	Size 2	23.5kg	<b>NPR05233-00</b>
Komatsu	830E	Size 2	23.5kg	<b>NPR05233-00</b>
Komatsu	930E	Size 2	23.5kg	<b>NPR05233-00</b>
Terex	MT4400	Size 3	21.5kg	<b>NPR06358-00</b>
Liebherr	T282C	Size 3	21.5kg	<b>NPR06358-00</b>
Caterpillar	795	Size 5	20kg	<b>NPR07087-00</b>
Caterpillar	797	Size 7	20.5kg	<b>NPR07678-00</b>
Caterpillar	789	Size 9 (truck specific)	16kg	<b>NPR08172-00</b>
Caterpillar	796	Size 10	29kg	<b>NPR08264-00</b>
Hitachi	EH5000	Size 11	23kg	<b>NPR08270-00</b>

National Plastics & Rubber promotes safe working practices.

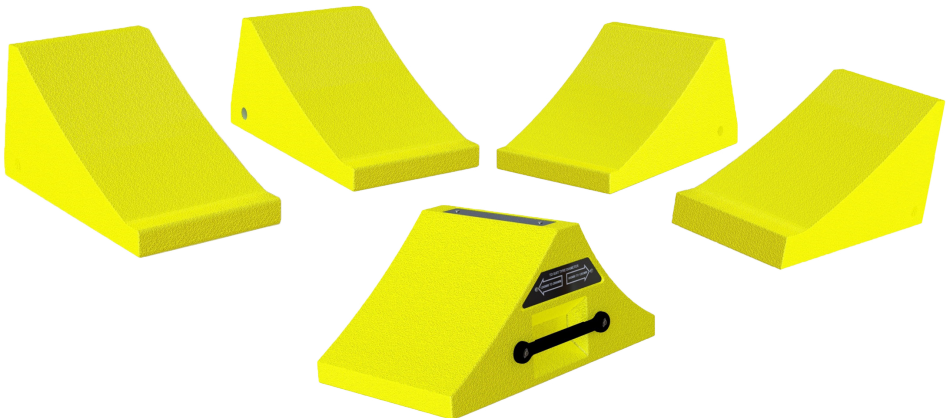
Ask us how to check your truck & tray dimensions to find the most suitable tray support block

# WHEEL CHOCKS

## WORLD CLASS CHOCKS.

National Plastics & Rubber Wheel Chocks are tough and durable with sizes to suit even the largest mining trucks.

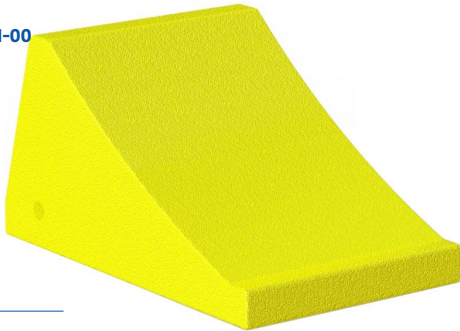
- » **LIGHTWEIGHT**
- » **FIELD TESTED**
- » **SLIP-RESISTANT, DURABLE POLYURETHANE**
- » **ONE-PIECE CONSTRUCTION**
- » **IMPERVIOUS TO CHEMICALS, SALTS, ROT**
- » **RESISTANT TO FUEL, OIL & SOLVENTS**
- » **WIDE RANGE OF SIZES TO SUIT EVERY APPLICATION**





# MEDIUM VEHICLES

**SIZE 3.7LW**  
PART NO. NPR01891-00



Suits Tires

Ø 47" to 86"



**BRACKET OPTION**



18.75" L

12" W

10" H

13 lbs

# MEDIUM - LARGE VEHICLES

**SIZE 4/3LW**  
PART NO. NPR01476-00



Suits Tyres

Ø 800mm to 2800mm



**BRACKET OPTION**



559mm L

330mm W

280mm H

8kg

# LARGE - X LARGE VEHICLES

## SIZE 4LW

PART NO. NPR01329-00



Suits Tires

70" to 118"



### BRACKET OPTION



NPR02016-00

22.50" L

13" W

11" H

20 lbs

## SIZE 5LW

PART NO. NPR02155-00



Suits Tires

86" to 137"



### BRACKET OPTION



NPR02136-00

24.50" L

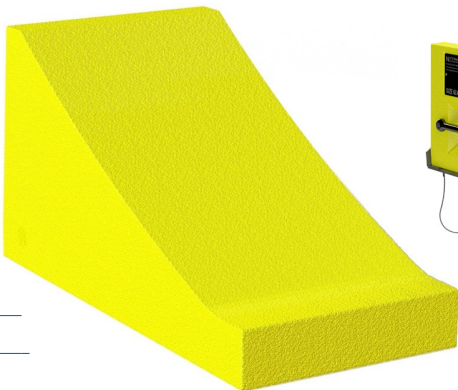
13.50" W

12.75" H

24 lbs

## SIZE 6LW

PART NO. NPR00984-00



Suits Tires

110" to 165"



### BRACKET OPTION



NPR02017-00

27" L

13" W

14" H

31 lbs

WHEEL CHOCK SIZE GUIDE - TO SUIT MINE TRUCKS

Make	Series	Tire Size	Width (inch)	Diameter (inch)	Wheel Chock	Product Number
Caterpillar	797	59/80R63	57.75	158	Size 6 LW	<a href="#">NPR00984-00</a>
Caterpillar	793C	40.00R51	43.50	140.75	Size 6 LW	<a href="#">NPR00984-00</a>
Caterpillar	789	37.00R57	41	135.50	Size 6 LW	<a href="#">NPR00984-00</a>
Caterpillar	789	37.00R57	41	135.50	Size 5 LW	<a href="#">NPR02155-00</a>
Caterpillar	785	33.00R51	36.75	120.50	Size 4 LW	<a href="#">NPR01329-00</a>
Caterpillar	785	33.00R51	36.75	36.75	Size 5 LW	<a href="#">NPR02155-00</a>
Caterpillar	777	27.00R49	29.50	106.50	Size 4 LW	<a href="#">NPR01329-00</a>
Caterpillar	777	27.00R49	29.50	106.50	Size 5 LW	<a href="#">NPR02155-00</a>
Caterpillar	775	24.00R35	26	86	Size 4 LW	<a href="#">NPR01329-00</a>
Caterpillar	773	21.00R35	22.75	80.50	Size 3.7 LW	<a href="#">NPR01891-00</a>
Caterpillar	769	18.00R33	20	74.50	Size 3.7 LW	<a href="#">NPR01891-00</a>
Caterpillar	740	29.5-R25	33.50	73.50	Size 3.7 LW	<a href="#">NPR01891-00</a>
Hitachi	EH5000	53/80R63	51	150.75	Size 6 LW	<a href="#">NPR00984-00</a>
Hitachi	EH4500	50/90R57	50.50	151	Size 6 LW	<a href="#">NPR00984-00</a>
Hitachi	EH4000	46/90R57	47	140.75	Size 6 LW	<a href="#">NPR00984-00</a>
Hitachi	EH3500	37.00R57	41	134.75	Size 5 LW	<a href="#">NPR02155-00</a>
Hitachi	AH250	23.5R25	23.50	63.50	Size 3.7 LW	<a href="#">NPR01891-00</a>
Hitachi	AH300	23.5R25	23.50	63.50	Size 3.7 LW	<a href="#">NPR01891-00</a>
Hitachi	AH400	29.5R25	29.75	77	Size 3.7 LW	<a href="#">NPR01891-00</a>
Komatsu	930	53/80R63	51	150.75	Size 6 LW	<a href="#">NPR00984-00</a>
Komatsu	830E	40.00R57	44	140.75	Size 6 LW	<a href="#">NPR00984-00</a>
Komatsu	730E	37.00-R57	41	134.75	Size 6 LW	<a href="#">NPR00984-00</a>
Komatsu	730E	37.00-R57	41	134.75	Size 5 LW	<a href="#">NPR02155-00</a>
Komatsu	630E	36.00R51	40	126	Size 5 LW	<a href="#">NPR02155-00</a>
Komatsu	785	27.00-R49	29.50	106	Size 4 LW	<a href="#">NPR01329-00</a>
Komatsu	HD465	24.00R35	26	86	Size 4 LW	<a href="#">NPR01329-00</a>
Komatsu	HD405	18.00R33	20	74.50	Size 3.7 LW	<a href="#">NPR01891-00</a>
Liebherr	T282	56/80R63 or 59/80R83	57.75	158	Size 6 LW	<a href="#">NPR00984-00</a>
Terex	MT4400	40.00R57	44	140.75	Size 6 LW	<a href="#">NPR00984-00</a>
Terex	TR60	24.00R35	26	85	Size 4 LW	<a href="#">NPR01329-00</a>
Volvo	A40F	29.5R25	29.75	77	Size 3.7 LW	<a href="#">NPR01891-00</a>
Volvo	A25F	25.5R25	26.50	68	Size 3.7 LW	<a href="#">NPR01891-00</a>
Volvo	A30F	750/65R25	29	63	Size 3.7 LW	<a href="#">NPR01891-00</a>



# NATIONAL

PLASTICS & RUBBER

**NPRMINING.COM**

**Email** [info@nprmining.com](mailto:info@nprmining.com) **Phone** 519-913-1911

National Plastics & Rubber has the experience and knowledge necessary to meet your needs.

National Plastics & Rubber promotes safe working practices therefore, performing your own risk assessment is essential before using these products.

We specialise in polyurethane, rubber and industrial plastics design and manufacturing for the mining, automotive and manufacturing industries.