

JHA
Joist Hanger with Adjustable Height Strap

JHA is a height adjustable joist hanger for supporting timber joists from timber members. It is available in standard leg (JHA270) and long leg (JHA450) versions and can be installed to the face of the carrying joist or wrapped over the top for higher performance.

Features

Material

- Pre-galvanised mild steel.

Features

- A galvanised joist hanger that provides great support with ease of installation.
- Published performance values are based upon 3.75 x 30mm square twist nails being used throughout.
- Wider strap provides more surface area on the supporting timber and allows increased nail spacing, enhancing the performance of the critical hanger-to-support part of the connection.
- Minimum and maximum nailing schedules are stamped into the strap providing correct installation information for site operatives.
- Speed-prong holds the hanger in position to allow easier attachment. The installer no longer has to try to hold hanger, joist and nail with one hand and swing a hammer with the other!
- JHA270 range features a location tab which allows easier alignment of the hanger.
- The model number and size is stamped into the seat of the hanger for easy identification, even after installation.

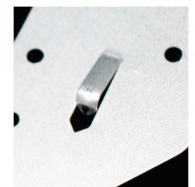
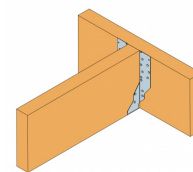
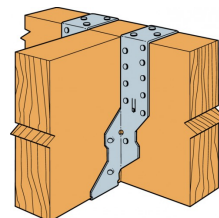
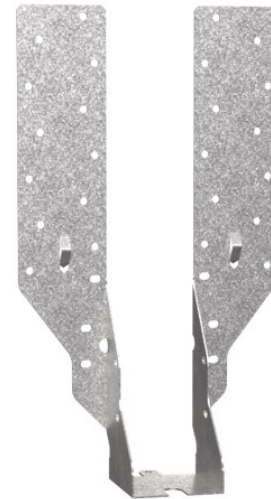
Applications

Suitable On

- **Solid sawn timber joists**

When to Use

- Face Fix
- Wrap Over



Speed Prongs
(JHA270)

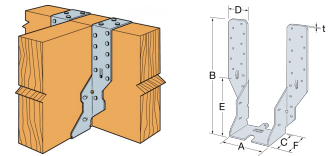


Location Tab (JHA270)

JHA Joist Hanger with Adjustable Height Strap

Technical Data

Product Dimensions - JHA270



References	Product Dimensions [mm]							Header holes	Joist holes
	A	B	C	D	E	F	t	Ø4	Ø6x4 Oblong
JHA270/38	38	241	50	48.8	106	52.1	0.9	22	4
JHA270/44	44	238	50	48.8	103	52.1	0.9	22	4
JHA270/47	47	236.5	50	48.8	101.5	52.1	0.9	24	4
JHA270/50	50	235	50	48.8	100	52.1	0.9	24	4
JHA270/63	63	248.5	50	48.8	113.5	52.1	0.9	22	4
JHA270/75	75	242.5	50	48.8	99.5	52.1	0.9	22	4
JHA270/91	91	234	50	48.8	95	52.1	0.9	22	4
JHA270/100	100	230	50	48.8	230	52.1	0.9	22	4

Product Dimensions - JHA450



JHA450 Below Support Installation.

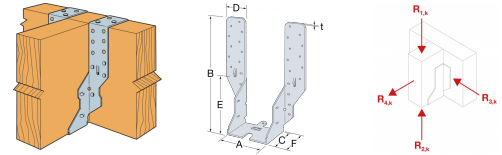
References	Joist Size [mm]	Product Dimensions [mm]							Header holes	Joist holes
	Width	A	B	C	D	E	F	t	Ø4	Ø6x4 Oblong
JHA450/38	1x38	38	481	50	51.5	191	61.5	1.2	38	6
JHA450/44	1x44	44	478	50	51.5	188	61.5	1.2	38	6
JHA450/47	1x45	47	477	50	51.5	187	61.5	1.2	38	6
JHA450/50	1x50	50	475	50	51.5	185	61.5	1.2	38	6
JHA450/63	1x63	63	469	50	51.5	179	61.5	1.2	38	6
JHA450/75	1x75	75	463	50	51.5	173	61.5	1.2	38	6
JHA450/91	2x45	91	455	50	51.5	165	61.5	1.2	38	6
JHA450/100	2x50	100	450	50	51.5	160	61.5	1.2	38	6
JHA450/125	2x63	125	452.5	63	51.5	162.5	64.5	1.2	38	6
JHA450/137	3x45	137	446.5	63	51.5	156.5	64.5	1.2	38	6
JHA450/150	3x50	150	440	63	51.5	150	64.5	1.2	38	6

Technical data sheet



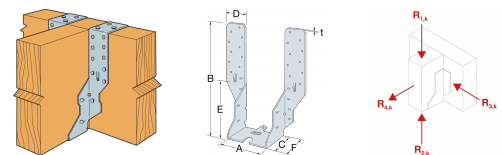
JHA Joist Hanger with Adjustable Height Strap

JHA270 - Wrap Over Installation



References	Header - Dimensions		Number of Fasteners			Characteristic capacities - Timber C16 [kN]		Safe Working Loads [kN]		
	Height		Header	Joist	Qty	$R_{1,k}$	$R_{2,k}$	$R_{1,SWL,Medium Term}$	$R_{1,SWL,Long term}$	Short Term Uplift
	Min	Max.	Face Qty	Top Qty		N3.75x30 CSA4.0x30	N3.75x30 CSA4.0x30	C16 header N3.75x30 CSA4.0x30	C16 header N3.75x30 CSA4.0x30	C16 Joist N3.75x30 CSA4.0x30
JHA270/38	125	200	8	4	4	10	2.1	4.8	4.2	1.1
JHA270/44	125	200	8	4	4	11.6	2.1	5.5	4.8	1.1
JHA270/47	125	200	8	4	4	12.4	2.1	5.9	5.2	1.1
JHA270/50	125	200	8	4	4	13.1	2.1	6.2	5.5	1.1
JHA270/63	125	200	8	4	4	13.2	2.1	6.3	5.5	1.1
JHA270/75	125	200	8	4	4	13.2	2.1	6.3	5.5	1.1
JHA270/91	125	200	8	4	4	13.2	2.1	6.3	5.5	1.1
JHA270/100	125	200	8	4	4	13.2	2.1	6.3	5.5	1.1

JHA450 - Wrap Over Installation



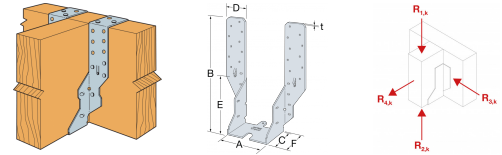
References	Number of Fasteners			Characteristic capacities - Timber C16 [kN]		Safe Working Loads [kN]		
	Header		Joist	$R_{1,k}$	$R_{2,k}$	$R_{1,SWL,Medium Term}$	$R_{1,SWL,Long term}$	Short Term Uplift
	Face Qty	Top Qty	Qty	N3.75x30 CSA4.0x30	N3.75x30 CSA4.0x30	C16 header N3.75x30 CSA4.0x30	C16 header N3.75x30 CSA4.0x30	C16 Joist N3.75x30 CSA4.0x30
JHA450/38	8	4	6	10	3.1	4.8	4.2	1.6
JHA450/44	8	4	6	11.6	3.1	5.5	4.8	1.6
JHA450/47	8	4	6	12.4	3.1	5.9	5.2	1.6
JHA450/50	8	4	6	13.1	3.1	6.3	5.5	1.6
JHA450/63	8	4	6	13.2	3.1	6.3	5.5	1.6
JHA450/75	8	4	6	13.2	3.1	6.3	5.5	1.6
JHA450/91	8	4	6	13.2	3.1	6.3	5.5	1.6
JHA450/100	8	4	6	13.2	3.1	6.3	5.5	1.6
JHA450/125	8	4	6	13.6	3.1	6.5	5.7	1.6
JHA450/137	8	4	6	13.6	3.1	6.5	5.7	1.6
JHA450/150	8	4	6	13.6	3.1	6.5	5.7	1.6

Technical data sheet



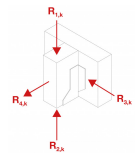
JHA Joist Hanger with Adjustable Height Strap

JHA270 - Face Fix Installation



References	Header - Dimensions		Number of Fasteners			Characteristic capacities - Timber C16 [kN]		Safe Working Loads [kN]		
	Height		Header	Joist	Qty	$R_{1,k}$	$R_{2,k}$	$R_{1,SWL,Medium Term}$	$R_{1,SWL,Long term}$	Short Term Uplift
	Min	Max.	Face Qty	Top Qty		N3.75x30 CSA4.0x30	N3.75x30 CSA4.0x30	C16 header N3.75x30 CSA4.0x30	C16 header N3.75x30 CSA4.0x30	C16 Joist N3.75x30 CSA4.0x30
JHA270/38	200	250	20	-	4	7.6	2.1	3.6	3.2	1.1
JHA270/44	200	250	20	-	4	7.6	2.1	3.6	3.2	1.1
JHA270/47	200	250	20	-	4	7.6	2.1	3.6	3.2	1.1
JHA270/50	200	250	20	-	4	7.6	2.1	3.6	3.2	1.1
JHA270/63	200	250	20	-	4	7.6	2.1	3.6	3.2	1.1
JHA270/75	200	250	20	-	4	7.6	2.1	3.6	3.2	1.1
JHA270/91	200	250	20	-	4	7.6	2.1	3.6	3.2	1.1
JHA270/100	200	250	20	-	4	7.6	2.1	3.6	3.2	1.1

JHA450 - Face Fix Installation



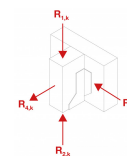
References	Number of Fasteners		Characteristic capacities - Timber C16 [kN]		Safe Working Loads [kN]		
	Header	Joist	$R_{1,k}$	$R_{2,k}$	$R_{1,SWL,Medium Term}$	$R_{1,SWL,Long term}$	Short Term Uplift
	Face Qty	Qty	N3.75x30 CSA4.0x30	N3.75x30 CSA4.0x30	C16 header N3.75x30 CSA4.0x30	C16 header N3.75x30 CSA4.0x30	C16 Joist N3.75x30 CSA4.0x30
JHA450/38	20	6	10	3.1	4.8	4.2	1.6
JHA450/44	20	6	10.6	3.1	5.1	4.4	1.6
JHA450/47	20	6	10.6	3.1	5.1	4.4	1.6
JHA450/50	20	6	10.6	3.1	5.1	4.4	1.6
JHA450/63	20	6	10.6	3.1	5.1	4.4	1.6
JHA450/75	20	6	10.6	3.1	5.1	4.4	1.6
JHA450/91	20	6	10.6	3.1	5.1	4.4	1.6
JHA450/100	20	6	10.6	3.1	5.1	4.4	1.6
JHA450/125	20	6	11.6	3.1	5.5	4.8	1.6
JHA450/137	20	6	11.6	3.1	5.5	4.8	1.6
JHA450/150	20	6	11.6	3.1	5.5	4.8	1.6

Technical data sheet

SIMPSON

Strong-Tie

JHA
Joist Hanger with Adjustable Height Strap



JHA450 - Below Support (Loft Conversion) Installation

References	Number of Fasteners			Characteristic capacities - Timber C16 [kN]		Safe Working Loads [kN]		
	Header		Joist	$R_{1,k}$	$R_{2,k}$	$R_{1,SWL,Medium Term}$	$R_{1,SWL,Long term}$	Short Term Uplift
	Face	Top	Qty	N3.75x30 CSA4.0x30	N3.75x30 CSA4.0x30	C16 header	C16 header	C16 Joist
	Qty	Qty				N3.75x30 CSA4.0x30	N3.75x30 CSA4.0x30	N3.75x30 CSA4.0x30
JHA450/38-100	4	4	6	9.6	-	4.6	4	-
JHA450/125-150	4	4	6	10.1	-	4.8	4.2	-
JHA450/38-100 (alt)	20	-	6	9.6	-	4.6	4	-
JHA450/125-150 (alt)	20	-	6	10.1	-	4.8	4.2	-

JHA
Joist Hanger with Adjustable Height Strap

Installation

Installation

Alternative installation methods are available depending on the availability of nailing surface.

Maximum Nailing: All nails must be applied according to the table.

Minimum Nailing: For a lower installed cost the minimum nailing schedule can be used. A minimum wrap over of 45mm is required.

Loft Conversions (JHA450 Range): For applications where the hanger extends below the support. Install top, face, and joist nails according to the table. A minimum wrap over of 45mm is required or maximum nailing.

Winchester Road Cardinal Point Tamworth
Staffordshire B78 3HG
tel: +44 1827 255600
fax: +44 1827 255616

Copyright by Simpson Strong-Tie®

Information presented on this document is the exclusive property of Simpson Strong-Tie®
It is valid only when associated with products supplied by Simpson Strong-Tie®

JHA
Joist Hanger with Adjustable
Height Strap



www.strongtie.co.uk

SIMPSON
Strong-Tie

2024-04-13