



Ron 2150 Hook Type Crane Scale with 2"/50mm Attachable Display

Exceptionally small dimensions enable minimum headroom loss.
For example: Height of the 5t load cell is 13.2 inch / 334 mm

Optional wireless communication to additional display or PC that allows for multiple Ron crane scales/dynamometers in one area to send measurements to a centralized location.

Short delivery time: Usually 2 - 4 business days.

High quality Aerospace Steel for increased strength and safety.

New: Fatigue rated load cells - an important and unique safety feature: All Ron crane scales and dynamometers are now Fatigue Rated. They have an improved fatigue resistance level.

Advanced options such as: Integrated data logger, analog output, averaging / dampening and more.

Wide temperature range:
Load cell: -15°F to +175°F (-25°C to + 80°C)
Indicator: -4°F to +158°F (-20°C to +70°C).

Attachable display enables the user to either hold the display or to easily attach it to the load cell. The remote display enables the user to conveniently read the measured values from a safe distance.

Optional offshore and underwater load cell sealing levels: High sealing level IP 67 and IP 68 for offshore and underwater applications.



More than three decades in the market: Eilon Engineering Ltd. has specialized in the development and manufacturing of Ron crane scales and dynamometers since 1976. We have thousands of loyal customers such as NASA, Boeing, US Air Force and many more.

Exceptionally long battery life Up to 2000 hours on AA disposable batteries with battery life indication.

Double overload warning is displayed on the screen at 100% of full scale and at 130%.



Description

Ron 2150 Hook Type is a unique crane scale with large 2" / 50mm attachable display.

The attachable display enables the user either to hold the large indicator in his hand or snap it very easily onto the load cell.

By this means, the user's personal safety is ensured: He will either hold the remote load indicator in his hand or read the large display from a safe distance. He will not have to approach the load in order to read the result. The separation of the hanging load cells and the displays also increases the systems' durability.

This system's durability is also increased thanks to the fact that its electronic board is mounted on dampening mounts so it can effectively absorb impacts and keep the electronics unharmed in the case of mechanical shock.

The small crane scales' hanging load cells ensure low headroom loss for any below hook weighing or load measurement application.

Ron Crane Scales are made of the highest quality, aerospace steel and enable 2000 hour battery life – which makes them especially suitable for on-site applications.

Ron Crane Scale, Dynamometer and Load Cell series are used for force measurement, below hook weighing during lifting, overload prevention and load measurement.

For more than 30 years Ron Crane Scales excel in high quality, based on the latest technologies and comply with the strictest safety standards.

All Ron Crane Scales hanging Load Cells and Dynamometers are factory-tested and supplied with a test certificate, including a fully traceable calibration chart.



Specifications

Safety Factor: Designed to 5:1

Proof Load: Each system proof-loaded to 200% of capacity (certified) up to a test force of 400t.

Accuracy: $\pm 0.1\%$ of full range.

Durability: Robust indicator with extruded aluminum housing, polyurethane coated.

Display: 5 digit, 2" (50mm) liquid crystal display with two overload warning levels, max. value (peak hold), low battery, tare state (gross or net), measuring unit, sleep state, charge and programming instructions. Standard number of measurements per second: 1. Standard display update rate per second: 1.

Sampling Rate: 200 per second.

Functions: Zero. Tare. Battery charge level. Low battery warning. Max. (peak hold). Two-level overload visual alarms. User calibration. Sleep mode after 60 sec. in zero value, awakes automatically when loaded.

Units: Available in the following measurement readings: metric tons, short tons (2000 lbs), kgs, lbs (lbs x 10 for capacities of 50t and above), newtons, deca newtons, k. newtons.

Load Cell Material: Made of high-strength, aerospace quality, alloy steel, polyurethane coated.

Indicator Material: High quality ABS.

Power: 3 x AA 1.5 Volt Alkaline disposable batteries, with battery life indication. Batteries rated 3AH will function up to 2000 hours (three months of continuous working). Occasional use will extend the life of the batteries up to several years. Adding certain options will shorten the life of the batteries. All settings retained at power off.

Calibration: User calibration. Initial factory calibration, fully traceable (certified).

Temperature Range:

Load cell: -15°F to $+175^{\circ}\text{F}$ (-25°C to $+80^{\circ}\text{C}$)
Indicator: -4°F to $+158^{\circ}\text{F}$ (-20°C to $+70^{\circ}\text{C}$).

Environmental: Weather proof NEMA4, IP 65



Options

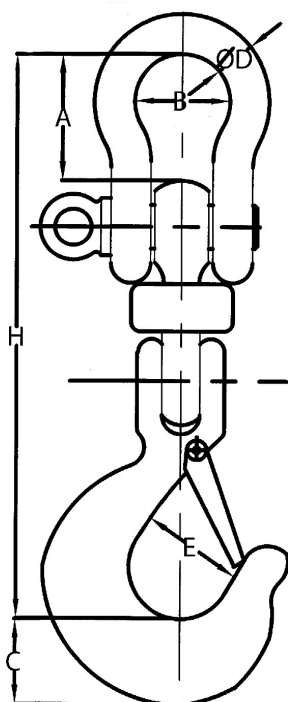
- 1 or 2 user-adjustable set points
- Additional 0.5"/12mm LCD display with cable connection to indicator or wireless
- Additional 1"/25mm LCD display with cable connection to indicator or wireless
- Additional 2"/50mm LCD display with cable connection to indicator or wireless
- Additional 4"/100mm LED display with cable connection to indicator or wireless
- Additional extension cable in 15ft/5m increments
- Analog output: 0 to 1V / 0 to 2V / 0 to 3V
- Analog output: 4 to 20 mA
- Baud rate, user-selectable
- Dampened (average) display for unstable loads
- Data logger – manual or automatic - up to 600 measurements
- Data logger – manual or automatic - up to 3,000 measurements
- Data logger – manual or automatic - up to 6,000 measurements
- Data logger – manual or automatic - up to 10,000 measurements
- IP 67 load cell with special offshore connectors
- IP 68 load cell with underwater capability
- Longer extension cable in 15ft/5m increments
- Number of measurements per second: Up to 200, factory set
- Real-time clock
- Rechargeable batteries with an external charger
- RS-232 - continuous or on demand data output, user-selectable
- RS-485 - continuous or on demand data output, user-selectable
- Totalizer
- Units, user-selectable
- USB



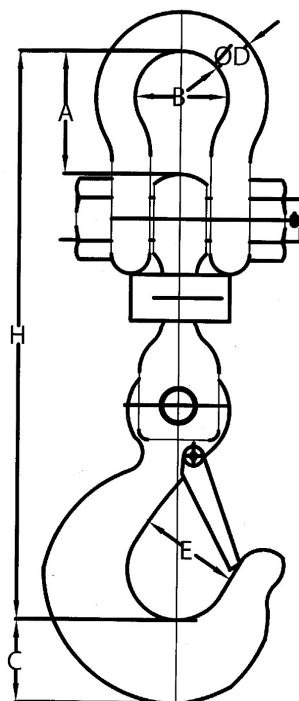
Ron 2150 Hook Type Crane Scale with 2"/50mm Attachable Display

Dimensions Table and Drawing

Capacities 0.5t - 15t



Capacities 20t - 32t



Cat no.	Cap.		Resolution		A		B		C		Ø D		E		H	
	tons	kgs	lbs	mm	inch	mm	inch	mm	inch	mm	inch	mm	inch	mm	inch	
H-005	0.5	0.2	0.5	30	1.2	26	1	31	1.2	10	0.4	25	1	235	9.3	
H-01	1	0.5	1	30	1.2	26	1	31	1.2	10	0.4	25	1	235	9.3	
H-0125	1.25	0.5	1	30	1.2	26	1	31	1.2	10	0.4	25	1	235	9.3	
H-016	1.6	1	2	30	1.2	26	1	31	1.2	10	0.4	25	1	235	9.3	
H-025	2.5	1	2	40	1.6	33	1.3	36	1.4	13	0.5	34	1.3	279	11	
H-03	3	1	2	40	1.6	33	1.3	36	1.4	13	0.5	34	1.3	279	11	
H-032	3.2	2	5	40	1.6	33	1.3	36	1.4	13	0.5	34	1.3	279	11	
H-05	5	2	5	50	2	43	1.7	44	1.7	16	0.6	41	1.6	334	13.2	
H-10	10	5	10	82	3.2	68	2.7	50	2	25	1	56	2.2	440	17.3	
H-12	12.5	5	10	82	3.2	68	2.7	50	2	25	1	56	2.2	440	17.3	
H-15	15	5	10	104	4.1	82	3.2	64	2.5	33	1.3	57	2.2	508	20	
H-20	20	10	20	137	5.3	111	4.3	79	3.1	41	1.6	71	2.8	621	24.5	
H-25	25	10	20	169	6.6	146	5.7	99	3.9	51	2	86	3.4	744	29.3	
H-30	30	10	20	169	6.6	146	5.7	99	3.9	51	2	86	3.4	744	29.3	
H-32	32	10	20	169	6.6	146	5.7	99	3.9	51	2	86	3.4	744	29.3	