


# Ron 1000 Chain Type Overload Detector

Exceptionally small dimensions enable minimum headroom loss. For example: Headroom loss of Ron 1000 Chain Type Overload Detector, for a 10t xwith 4 chain falls, is only 4.8 inch / 122 mm



Enables a special connection to the chain

Enables cost effective solution for overload/underload (slack) detection as well as above/below threshold detection.

Optional second detection point



Three decades in the market: Eilon Engineering Ltd. specializes in the development and manufacturing of Ron crane scales and dynamometers since 1976. We have thousands of repeat customers such as NASA, Boeing, US Air Force and many more.

Short delivery time: Usually 2-4 business days

[→ Contact us](#)

[→ Request for Quotation](#)

## Description

RON Crane Scales, Dynamometers, digital Load Cells and Overload Detectors, include the low headroom RON 1000 Chain Type Overload Detector which is designed to be installed on the dead end of a chain hoist.

RON 1000 is a low headroom, electromechanical overload guard. It may be configured to trigger any desired electrical alarm supplied by the customer including stopping the lift, for overload detection and prevention when an unsafe overload condition occurs.

Overload during lifting: Hoist or crane overload is dangerous and can cause accidents. Overload guard is important for prevention of crane overload.

The devices are supplied factory-calibrated and ready for installation. Available in a wide variety of capacities, the RON 1000 can be supplied in capacities ranging from 500 lbs (250 kgs) to 20,000 lbs (10,000 kgs). Each unit is initially adjusted to give the user an overload indication at 105% of rated capacity. Additional detection point is optional.

RON Crane Scales, Dynamometers, Overload Detectors and digital Load Cells are factory-tested and supplied with a test certificate, including a fully traceable calibration chart.

## Specifications

**Safety Factor** : 5:1. Each system proof-loaded to 200% of capacity (certified).

**Switching Nature** : Normally open and/or normally closed.

**Rating** : 0.5A @ 50 VDC, 0.5A @ 125 VAC.

**Life Expectancy** : Electrical: over 1 million operations. Mechanical: over 5 million operations.

**Approved by** : UL, CSA, Semko VDE.

**Environment** : Weatherproof, NEMA 4, IP 65.

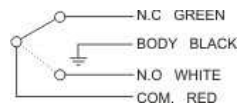
**Temperature Range** : -4° F to +175° F (-20° C to + 80° C).

**Cable Length** : 9.5' (3m).



**Material** : High strength, low alloy steel

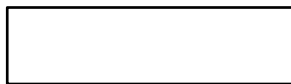
## Options

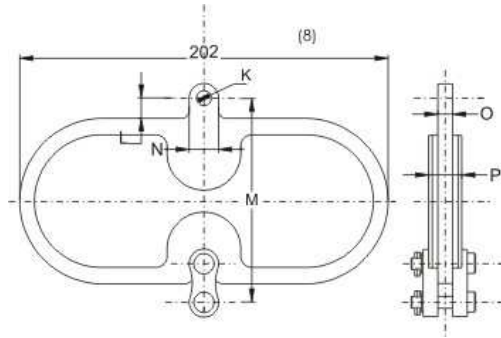
### Wiring



### Options :

-  Additional detection point
-  Fatigue rated structure





Cat no.	Chain size			Capacity (for one chain fall) tons	K		L		M Max		N Max		O Max		P Max	
	mm	inch	mm		inch	mm	inch	mm	inch	mm	inch	mm	inch	mm	inch	
C-7	6	7	1/4	1.25	8	0.31	12	0.47	115	4.5	20	0.79	6.5	0.26	19	0.75
C-9	8	9	5/16 3/8	1.6	10	0.39	16	0.63	120	4.7	25	1	8.5	0.34	21	0.83
C-11	10	11	7/16	2.0	12	0.47	17	0.67	122	4.8	30	1.2	10.5	0.41	23	0.91